

25 ± Acre Recreational Tract with a Creek

Rankin County, MS

\$120,000



- Hardwood and Pine Mix
- Deer and Duck Hunting
- Small Duck Hole
- Established Trail System
- Fannegusha Creek Frontage
- Power and Water Available
- Possible Camp Site
- 20 Minutes from Pelahatchie, MS

Directions from Pisgah, MS: From the intersection of Highway 25 and Highway 43 near Pisgah, drive east on Highway 43 for 2 miles. Turn left onto old Highway 43 and in 2.8 miles, continue straight onto Red Oak Road. In 2.3 miles turn left onto Fleming Road and travel 1.4 miles. The property will be on your right.

[Google Map Link](#)



Call me today!

ADAM HESTER, REALTOR®
 Adam@TomSmithLand.com
 601.898.2772 office | 601.506.5058 cell



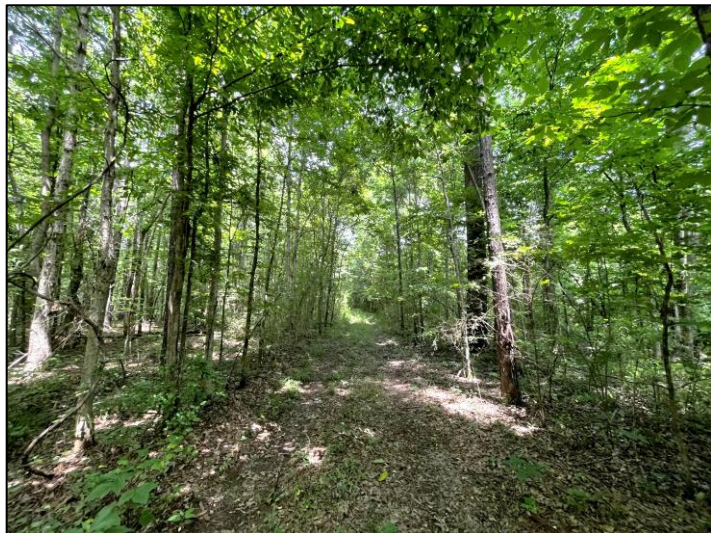
TomSmithLandandHomes.com

Information is believed to be accurate but not guaranteed.

Located in Rankin County off Fleming Road near Pisgah, MS, this 25± acre tract is ideal for hunting and weekend getaways.

This property offers an existing trail system, hardwood-pine mix, a small duck hole and is traversed by Fannegusha Creek. From a recreational standpoint, this property gives you the opportunity to chase after deer or ducks. The creek is great for exploring, while also providing a water source for the wildlife. Water and power are at the road with a potential spot for a small camp situated outside of the floodplain.

Whether you are looking for a small hunting tract, a place for the family to enjoy, or somewhere to get away by yourself...be sure to see what this place has to offer! The property is located within the Pisgah School District. Call Adam Hester today for more details.



Call me today!

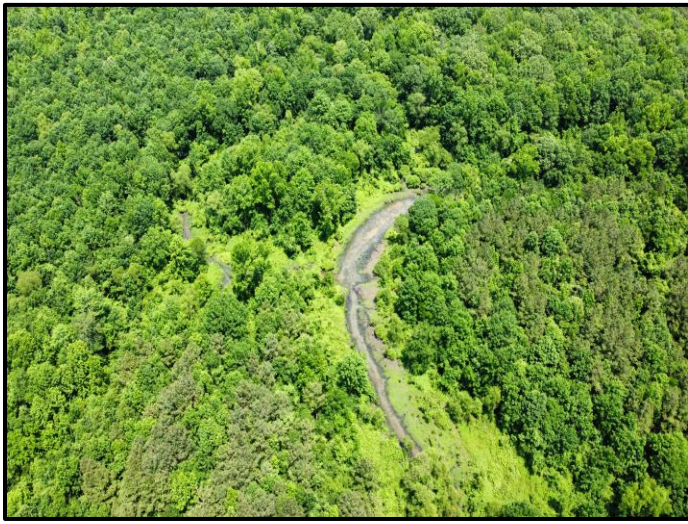
ADAM HESTER, REALTOR®
Adam@TomSmithLand.com
601.898.2772 **office** | 601.506.5058 **cell**



TomSmithLandandHomes.com

Information is believed to be accurate but not guaranteed.





Call me today!

ADAM HESTER, REALTOR®
Adam@TomSmithLand.com
601.898.2772 office | 601.506.5058 cell

REALTORS' LAND INSTITUTE

2011-2022
BEST BROKERAGES

REALTORS' Land Institute
APE AWARDS
2021 Producers Club

Tom Smith
LAND AND HOMES

Expect More. Get More.

TomSmithLandandHomes.com

Information is believed to be accurate but not guaranteed.



[Interactive Aerial Map](#)

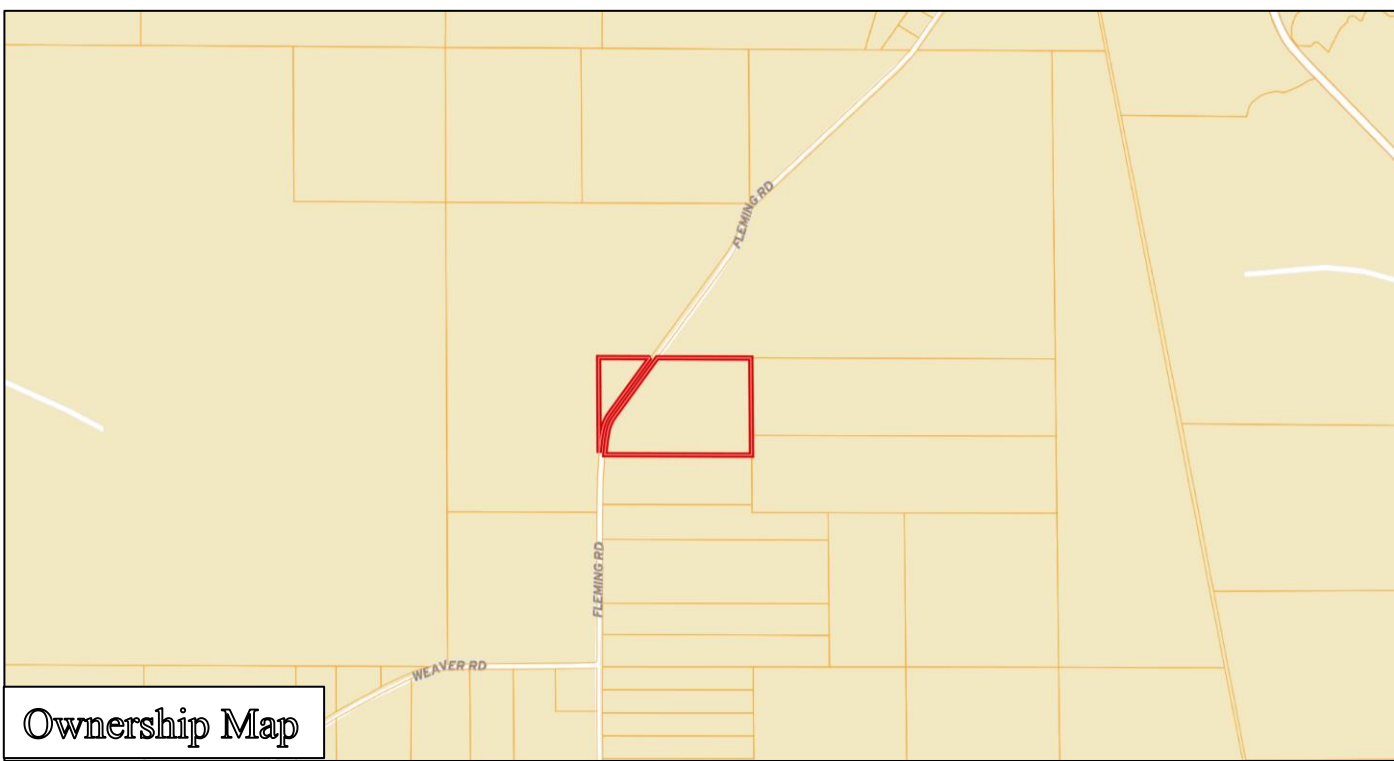
Call me today!

ADAM HESTER, REALTOR®
Adam@TomSmithLand.com
601.898.2772 **office** | 601.506.5058 **cell**

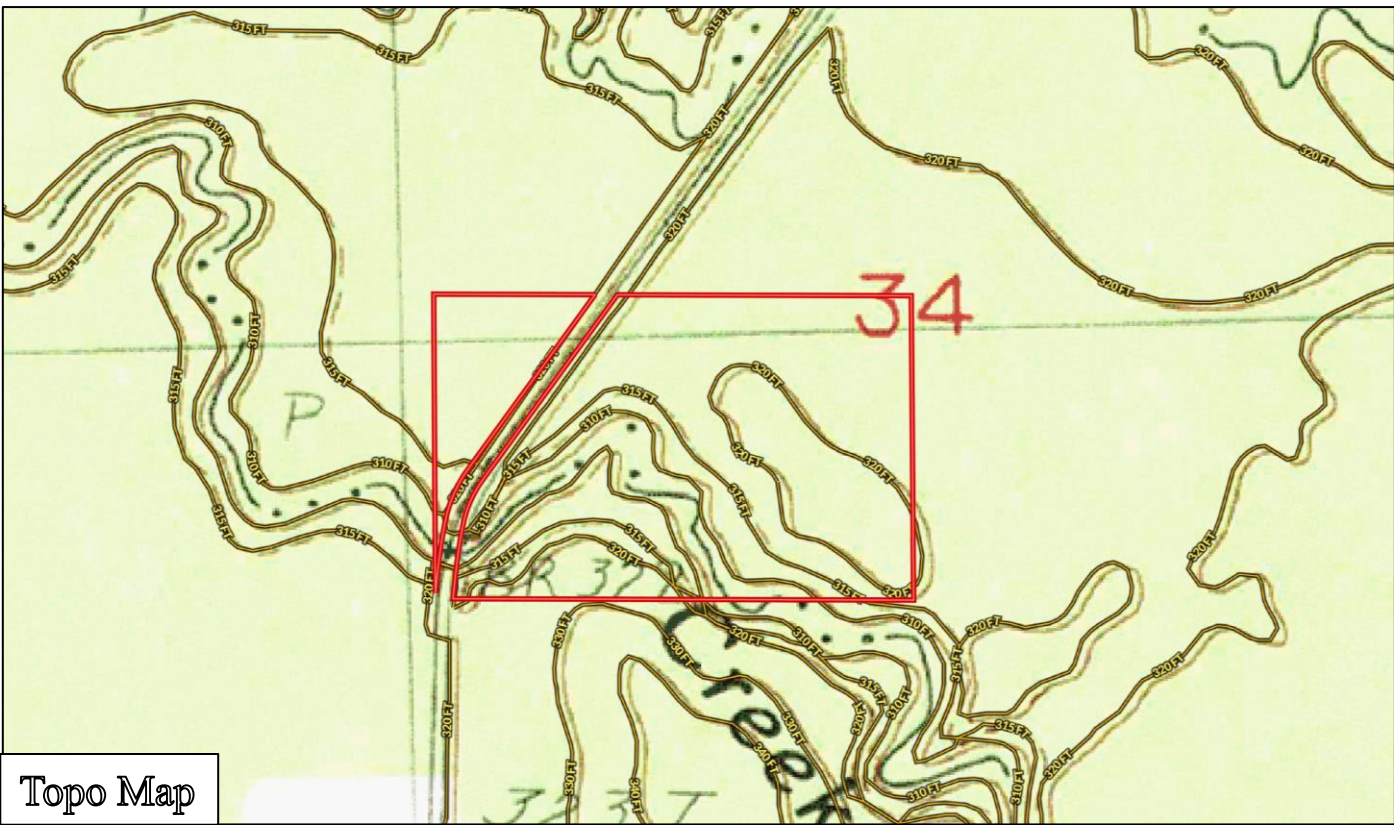


TomSmithLandandHomes.com

Information is believed to be accurate but not guaranteed.



Ownership Map



Topo Map

Call me today!

ADAM HESTER, REALTOR®
 Adam@TomSmithLand.com
 601.898.2772 office | 601.506.5058 cell

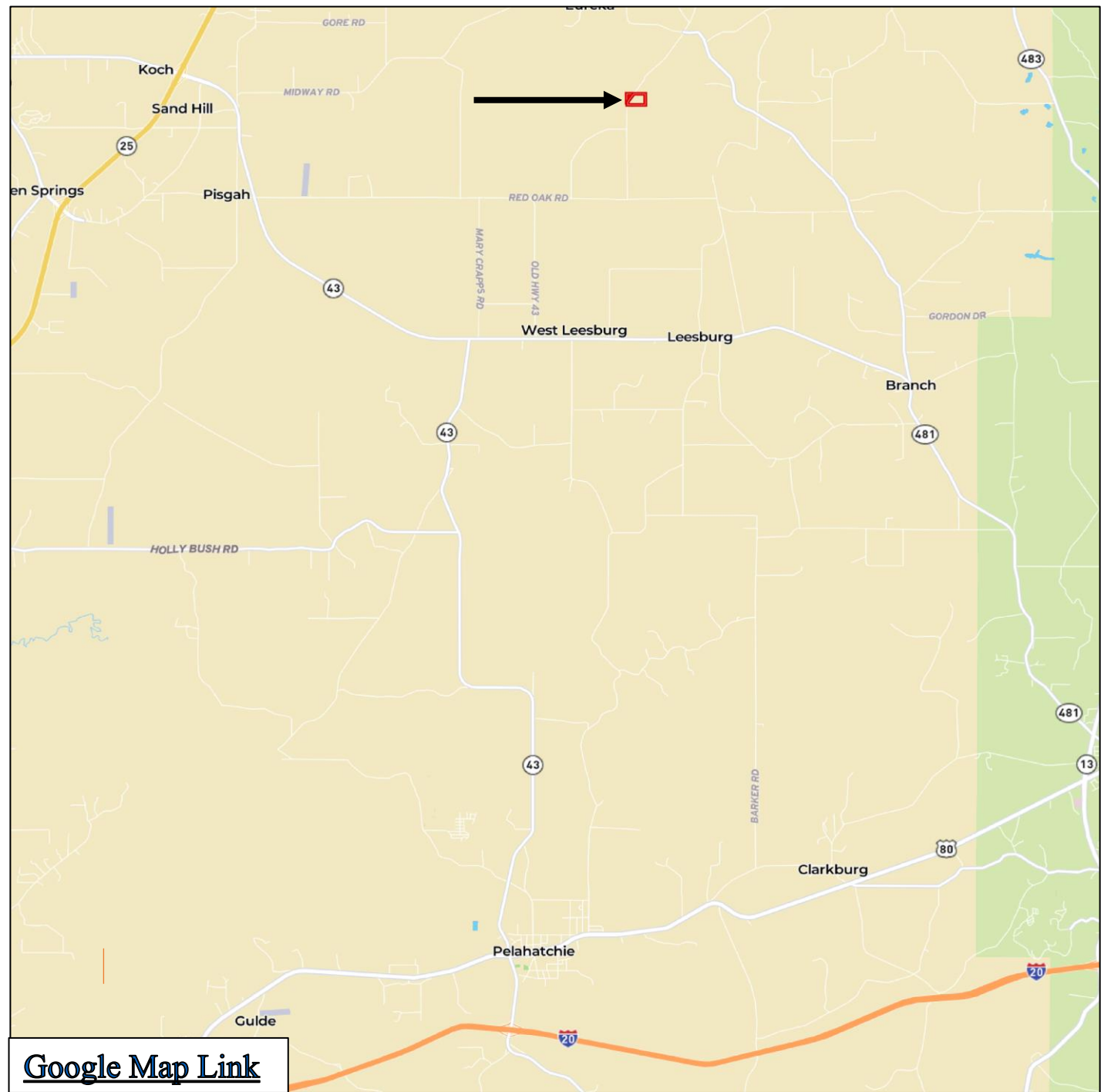


Expect More. Get More.



TomSmithLandandHomes.com

Information is believed to be accurate but not guaranteed.



[Google Map Link](#)

Directions from Pisgah, MS: From the intersection of Highway 25 and Highway 43 near Pisgah, drive east on Highway 43 for 2 miles. Turn left onto old Highway 43 and in 2.8 miles, continue straight onto Red Oak Road. In 2.3 miles turn left onto Fleming Road and travel 1.4 miles. The property will be on your right. [Google Map Link](#)

Call me today!

ADAM HESTER, REALTOR®
 Adam@TomSmithLand.com
 601.898.2772 **office** | 601.506.5058 **cell**



TomSmithLandandHomes.com

Information is believed to be accurate but not guaranteed.