

.11± ACRE RESIDENTIAL LOT IN HANCOCK COUNTY, MS



\$10,000

This .11± acre lot is located in the heart of Bay St. Louis in Hancock County, MS! The perfect place to build your weekend get-a-way. The property is conveniently located near casinos, shopping, dining, fishing, and the beach! The property is located just 1 hour from New Orleans, LA, and 1.5 hours from Mobile, AL. The property has quick access to I-10 and I-59. Utilities are available near the property.

Directions from the intersection of MS-43 and US-90 in Bay St. Louis: Travel west on US-90W, in 4.7 miles, turn left onto Lakeshore Rd, in 1.9 miles, turn left onto Hancock Dr, in .2 miles, turn left onto Sunflower St, in .4 miles, the property is on the right.



Call me today!

TARA WALKER SMITH, REALTOR®
Tara@TomSmithHomes.com
601.990.5070 **office** | 601.407.4315 **cell**



TomSmithLandandHomes.com

Information is believed to be accurate but not guaranteed.



Call me today!

TARA WALKER SMITH, REALTOR®
Tara@TomSmithHomes.com
601.990.5070 **office** | 601.407.4315 **cell**



Expect More. Get More.

TomSmithLandandHomes.com

Information is believed to be accurate but not guaranteed.

Aerial Map



INTERACTIVE MAP

Call me today!

TARA WALKER SMITH, REALTOR®
Tara@TomSmithHomes.com
601.990.5070 **office** | 601.407.4315 **cell**

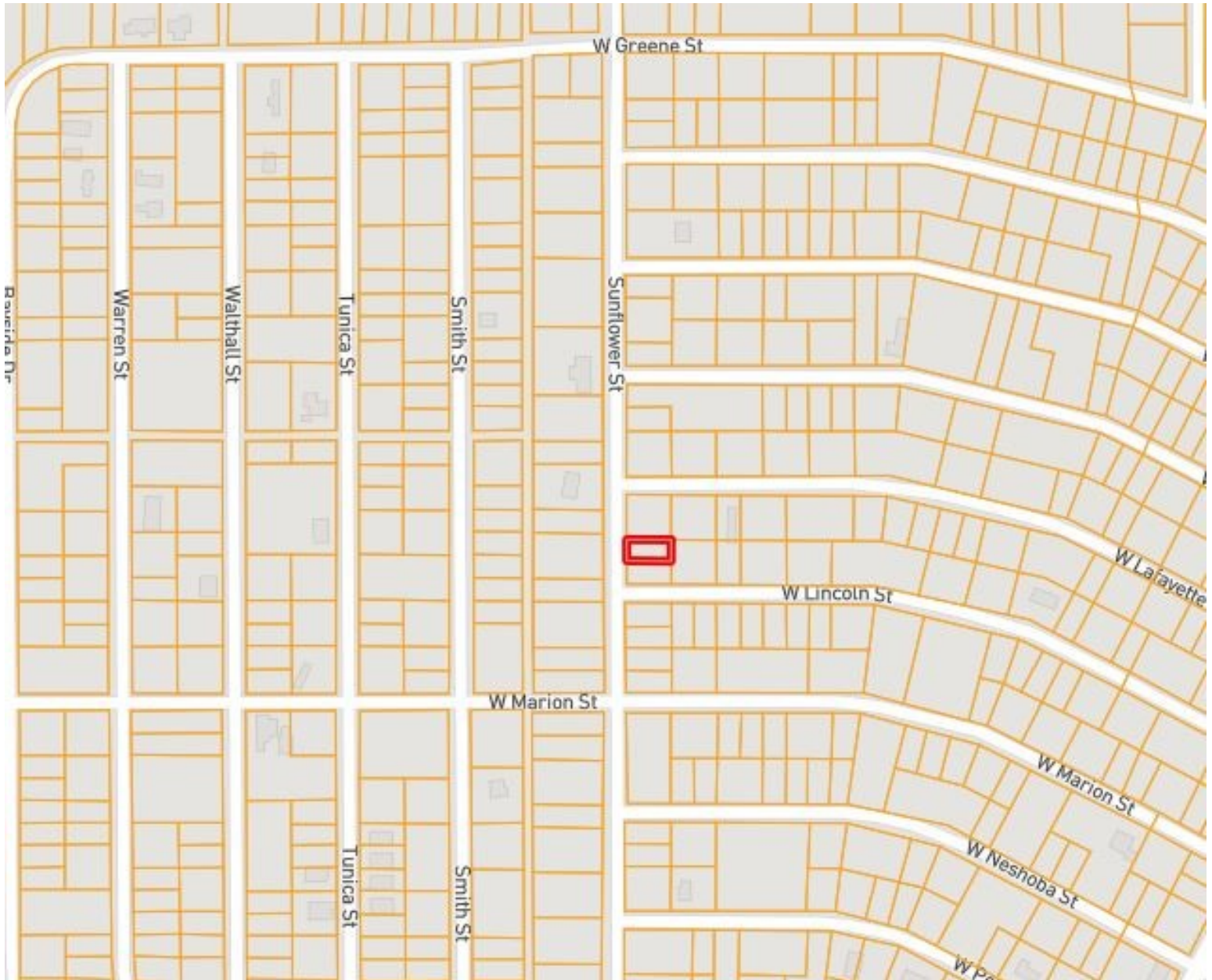


Expect More. Get More.

TomSmithLandandHomes.com

Information is believed to be accurate but not guaranteed.

Ownership Map



Call me today!

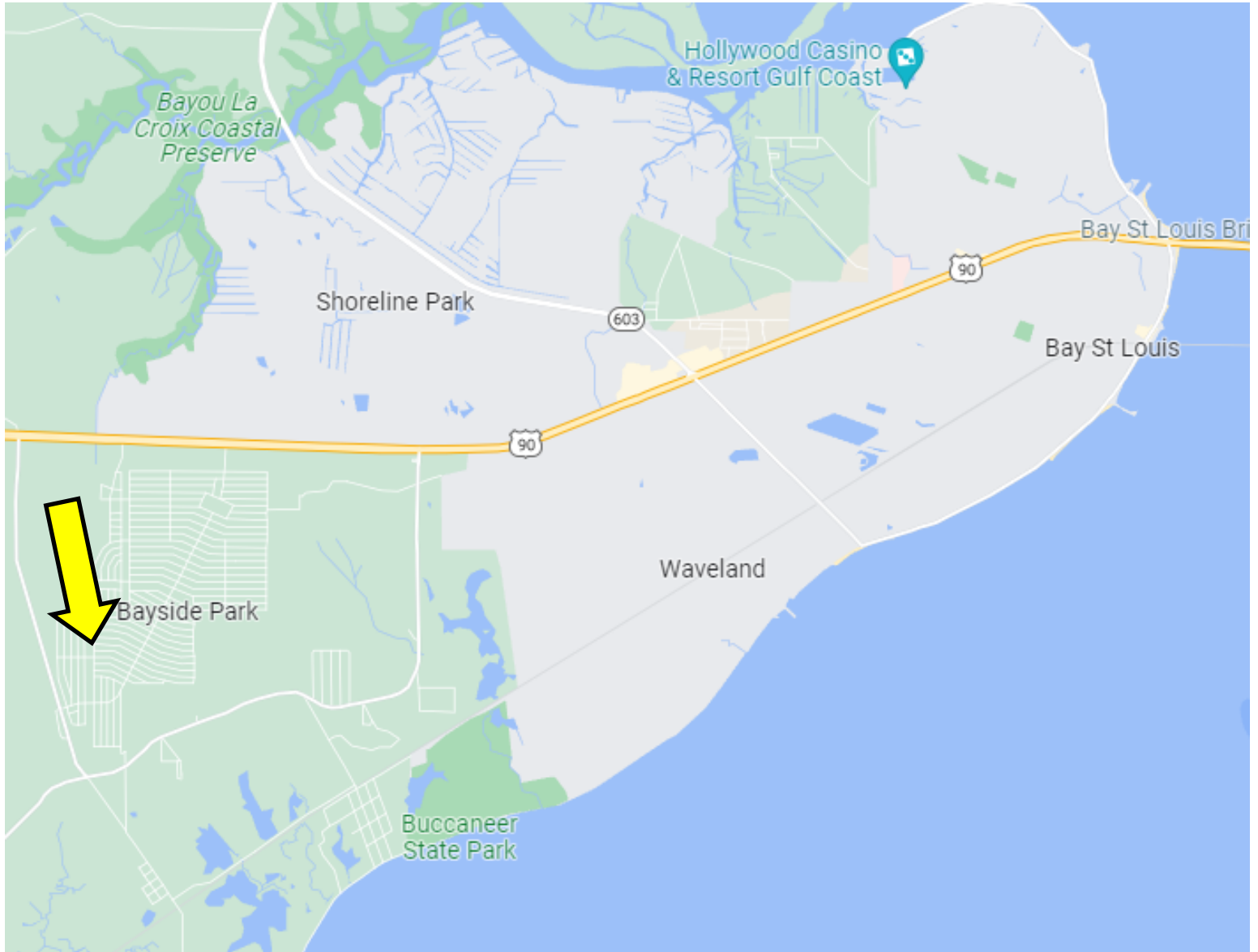
TARA WALKER SMITH, REALTOR®
Tara@TomSmithHomes.com
601.990.5070 **office** | 601.407.4315 **cell**



TomSmithLandandHomes.com

Information is believed to be accurate but not guaranteed.

Directional Map



Directions from the intersection of MS-43 and US-90 in Bay St. Louis: Travel west on US-90W, in 4.7 miles, turn left onto Lakeshore Rd, in 1.9 miles, turn left onto Hancock Dr, in .2 miles, turn left onto Sunflower St, in .4 miles, the property is on the right.

Call me today!

TARA WALKER SMITH, REALTOR®
Tara@TomSmithHomes.com
601.990.5070 **office** | 601.407.4315 **cell**



Expect More. Get More.

TomSmithLandandHomes.com

Information is believed to be accurate but not guaranteed.