

# 155+/- Acres of WRP in Sharkey County, MS



Come and take a look at this 155.7+/- acres in the Wetlands Reserve Program located in Sharkey County, MS. This property has deer, ducks, hogs, and other wildlife. It is bordered on three sides by timber and one side by agricultural fields. You have the opportunity to hunt the open water duck hole or flooded timber for a diverse hunting experience. There are 10+/- acres of food plots for deer or hog hunting. Call Bruce today for a private showing.

**Directions from Rolling Fork, MS:** From the intersection of MS 16 and Hwy 61 travel South on Hwy 61 for 19.7 miles and turn left onto Omega Road. In 0.3 miles turn right onto Dixie Road and in 1.9 miles the land is on the left.

**Directions from Vicksburg, MS:** From the intersection of I-20 and Hwy 61 travel North on US 61 for approximately 22 miles. Turn right onto Dixie Road and in 1.3 miles the land is on the left.



**\$410,000**



*Call me today!*

**BRUCE WEST**, REALTOR®  
Bruce@TomSmithLand.com  
662.441.2500 office | 662.873.3007 cell



**TomSmithLandandHomes.com**

Information is believed to be accurate but not guaranteed.



*Call me today!*

**BRUCE WEST**, REALTOR®

Bruce@TomSmithLand.com

662.441.2500 office | 662.873.3007 cell

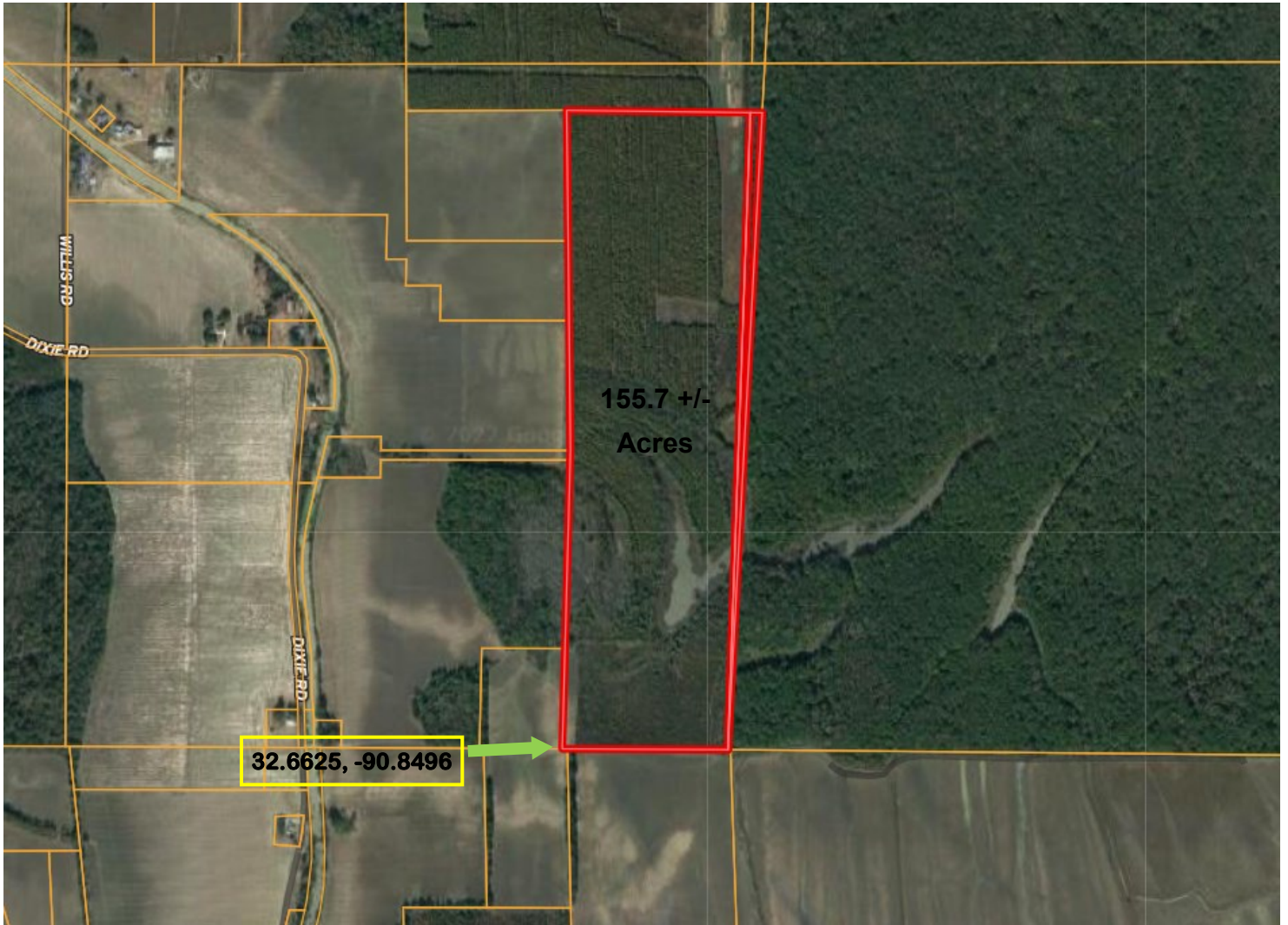


Expect More. Get More.

**TomSmithLandandHomes.com**

Information is believed to be accurate but not guaranteed.

# AERIAL MAP



[Click for Interactive Map](#)

*Call me today!*

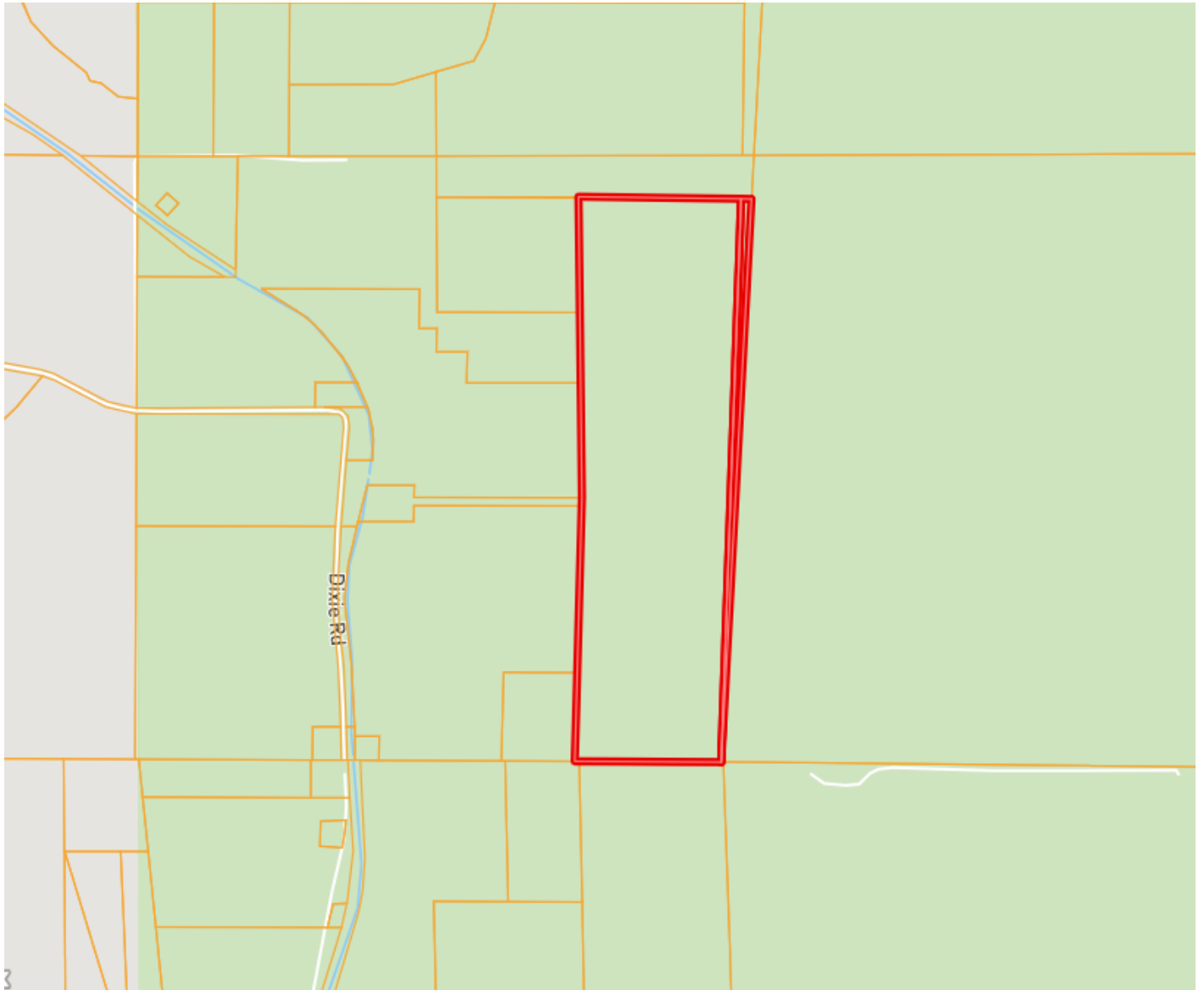
**BRUCE WEST**, REALTOR®  
Bruce@TomSmithLand.com  
662.441.2500 **office** | 662.873.3007 **cell**



[TomSmithLandandHomes.com](http://TomSmithLandandHomes.com)

Information is believed to be accurate but not guaranteed.

# OWNERSHIP MAP



*Call me today!*

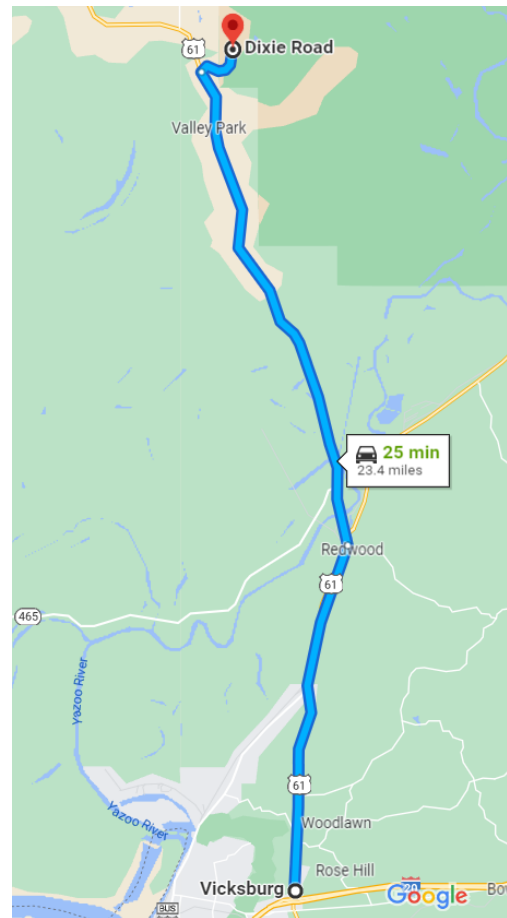
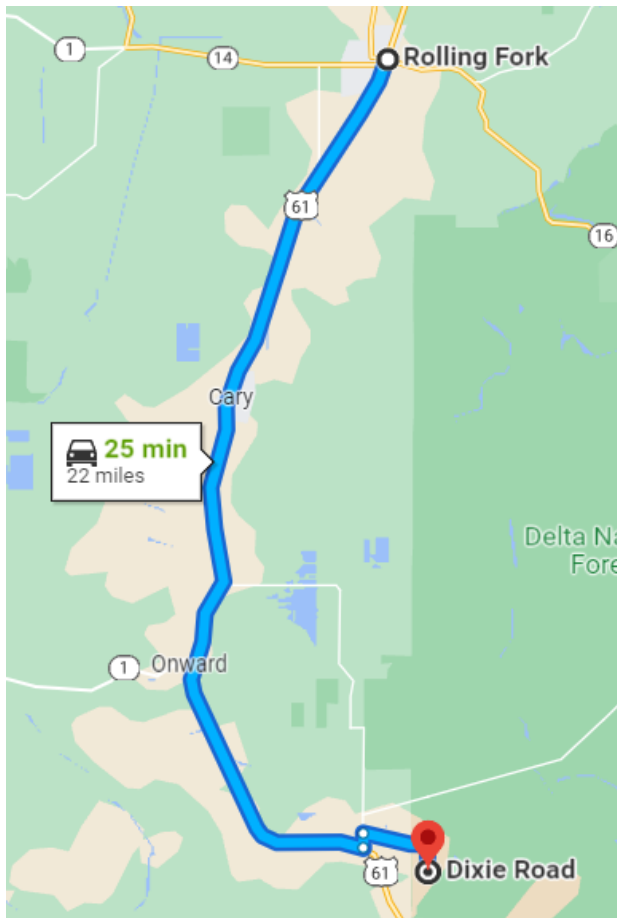
**BRUCE WEST**, REALTOR®  
Bruce@TomSmithLand.com  
662.441.2500 office | 662.873.3007 cell



[TomSmithLandandHomes.com](http://TomSmithLandandHomes.com)

Information is believed to be accurate but not guaranteed.

# DIRECTIONAL MAP



**Directions from Rolling Fork, MS:** From the intersection of MS 16 and Hwy 61 travel South on Hwy 61 for 19.7 miles and turn left onto Omega Rd. In 0.3 miles turn right onto Dixie Road and in 1.9 miles the land is on the left. [Click for Google Maps.](#)

**Directions from Vicksburg, MS:** From the intersection of I-20 and Hwy 61 travel North on US 61 for approximately 22 miles. Turn right onto Dixie Road and in 1.3 miles the destination is

*Call me today!*

**BRUCE WEST**, REALTOR®

Bruce@TomSmithLand.com

662.441.2500 **office** | 662.873.3007 **cell**



**TomSmithLandandHomes.com**

Information is believed to be accurate but not guaranteed.