

Small Delta Tract

8.18± Acres in Sunflower County, MS

\$32,000

Have you been looking for the perfect farm tract but didn't want the hassle of a large amount of acreage? This 8.18± acre Sunflower County, MS property might be what you've been needing! This property is located in Drew, MS, and has been used for farming in the past. The property is zoned agricultural but could also be the perfect spot for an income property to be built. Water and power are available at both ends of the property. Call Anthony to view this rare delta property today!

Directions from the Intersection of Hwy 49 and Hwy 8 in Ruleville, MS: Travel Hwy 49 N for 5.3 miles. Turn left onto South Front Street and continue for .3 miles. Turn left onto South Main Street. The property will be on your left.



Call me today!

ANTHONY STEEN, REALTOR®
Anthony@TomSmithLand.com
662.441.2500 **office** | 662.645.5151 **cell**



TomSmithLandandHomes.com

Information is believed to be accurate but not guaranteed.



Call me today!

ANTHONY STEEN, REALTOR®
Anthony@TomSmithLand.com
662.441.2500 **office** | 662.645.5151 **cell**

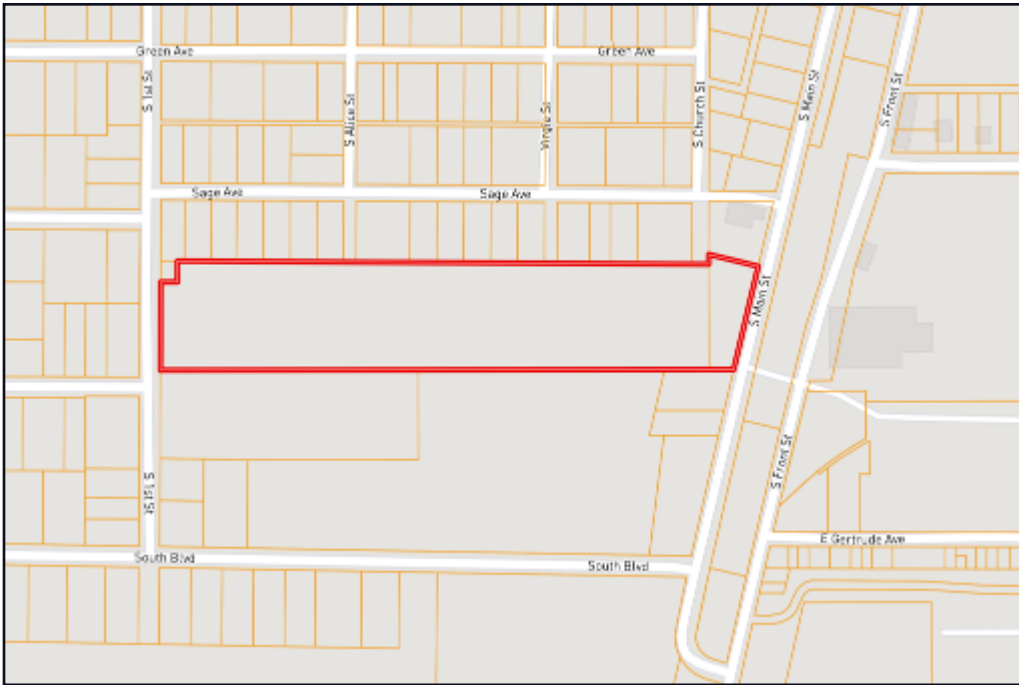


Expect More. Get More.



TomSmithLandandHomes.com

Information is believed to be accurate but not guaranteed.



OWNERSHIP MAP



AERIAL MAP

*Click Here for an
Interactive Map*

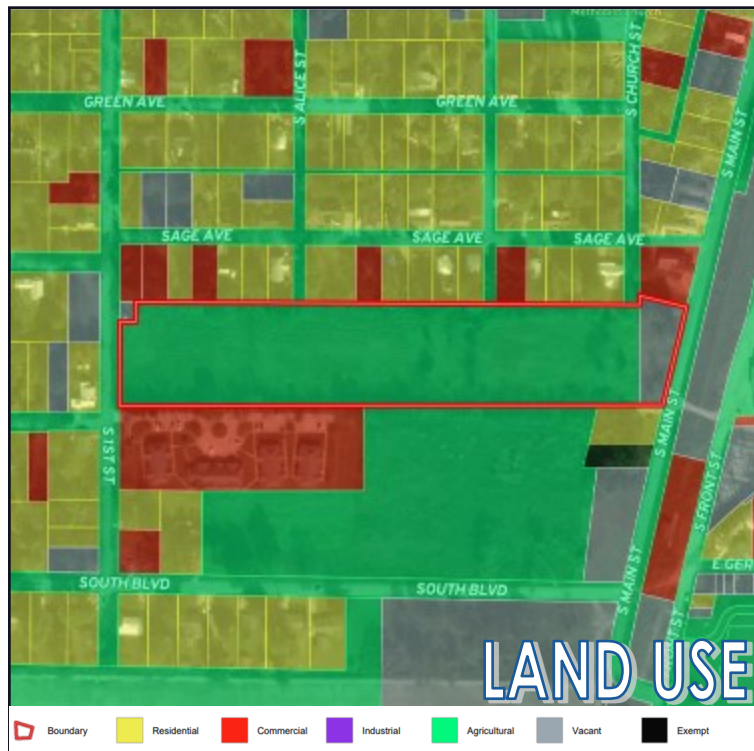
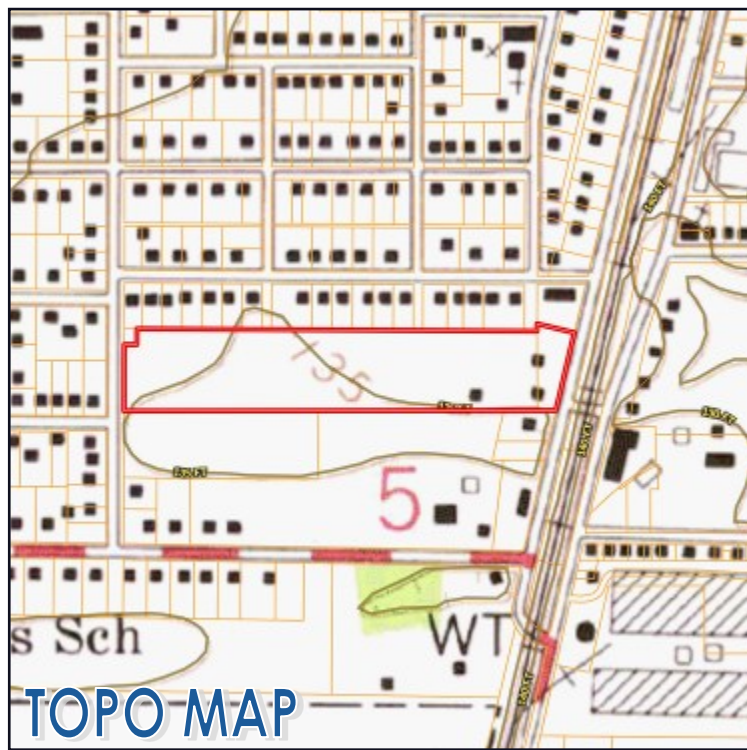
Call me today!

ANTHONY STEEN, REALTOR®
Anthony@TomSmithLand.com
662.441.2500 **office** | 662.645.5151 **cell**



TomSmithLandandHomes.com

Information is believed to be accurate but not guaranteed.



SOIL CODE	SOIL DESCRIPTION	ACRES	%	CPI	NCCPI	CAP
Fb	Forestdale silt loam, 0.5 to 3 percent slopes	4.76	58.12	0	65	3w
Dc	Dowling soils, overwash phases (sharkey)	3.43	41.88	0	42	4w

Call me today!

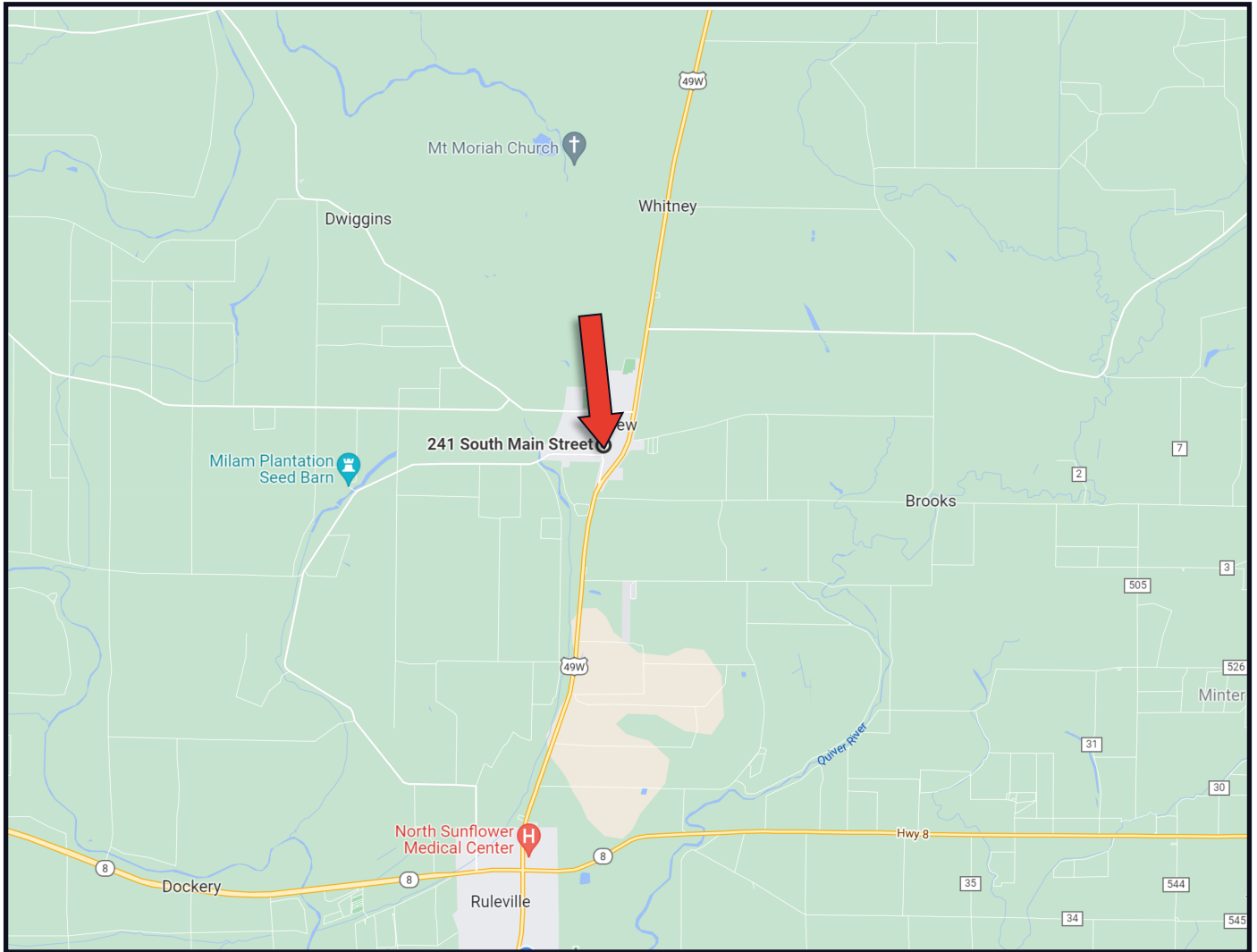
ANTHONY STEEN, REALTOR®
 Anthony@TomSmithLand.com
 662.441.2500 office | 662.645.5151 cell



TomSmithLandandHomes.com

Information is believed to be accurate but not guaranteed.

DIRECTIONAL MAP



Directions from the Intersection of Hwy 49 and Hwy 8 in Ruleville, MS: Travel Hwy 49 N for 5.3 miles. Turn left onto South Front Street and continue for .3 miles. Turn left onto South Main Street. The property will be on your left.

[GOOGLE MAP LINK](#)



Call me today!

ANTHONY STEEN, REALTOR®
Anthony@TomSmithLand.com
662.441.2500 **office** | 662.645.5151 **cell**



TomSmithLandandHomes.com

Information is believed to be accurate but not guaranteed.