

3 BED/3 BATH HOME ON 1± ACRE IN PIKE COUNTY, MS



1074 Pleasant Grove Rd, McComb, MS 39648

\$189,900

Check out this completely remodeled three bedroom, three bath home in Pike County, MS. The home sits on 1.11± acres just south of the city limits of McComb, MS. The home is approximately 10 minutes from the amenities of McComb while still offering quiet country living. The property is located in McComb School District, and is approximately 1.5 hours from Baton Rouge and New Orleans, LA, and just minutes from I-55.

Directions from the intersection of I-55 and US-98 in McComb, MS: Travel south on I-55S, in 2.0 miles, take Exit 13 toward Fernwood/Industrial Park, in .1 miles, turn left onto Airport Fernwood Rd, in 2.6 miles, turn right onto Fernwood Rd, in 4.2 miles, turn left onto Pleasant Grove Rd, in .3 miles, the property will be on the right.



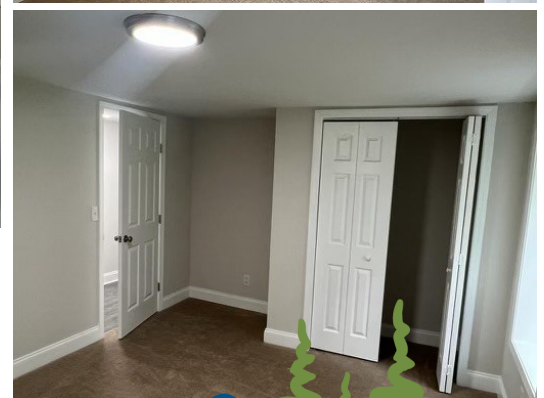
Call me today!

TARA WALKER SMITH, REALTOR®
Tara@TomSmithHomes.com
601.990.5070 office | 601.407.4315 cell



TomSmithLandandHomes.com

Information is believed to be accurate but not guaranteed.



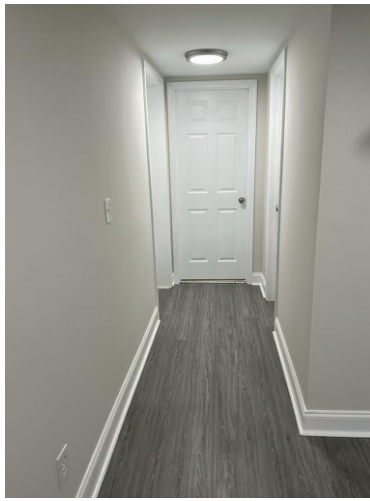
Call me today!

TARA WALKER SMITH, REALTOR®
 Tara@TomSmithHomes.com
 601.990.5070 **office** | 601.407.4315 **cell**



TomSmithLandandHomes.com

Information is believed to be accurate but not guaranteed.



Call me today!

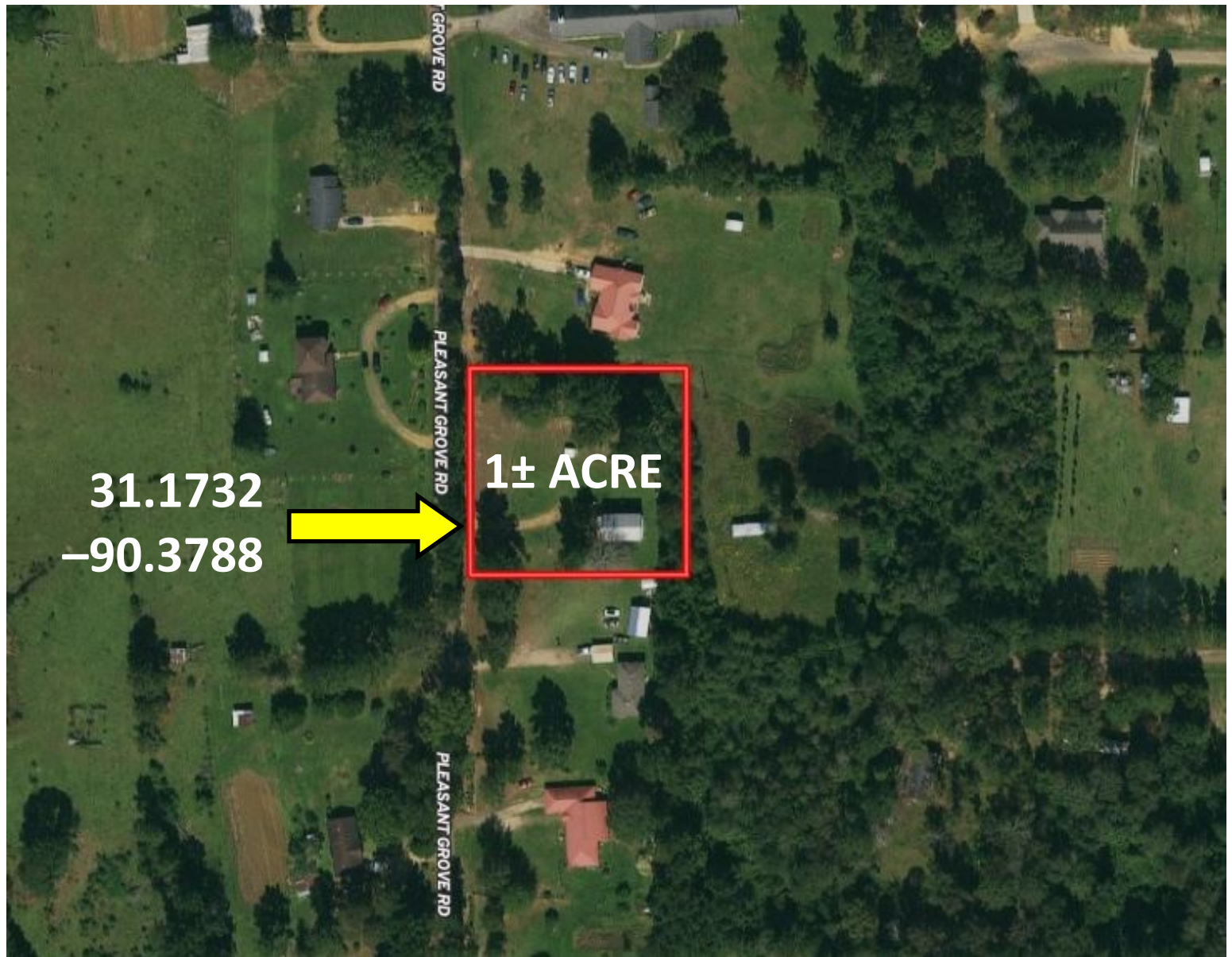
TARA WALKER SMITH, REALTOR®
 Tara@TomSmithHomes.com
 601.990.5070 **office** | 601.407.4315 **cell**



TomSmithLandandHomes.com

Information is believed to be accurate but not guaranteed.

Aerial Map



INTERACTIVE MAP

Call me today!

TARA WALKER SMITH, REALTOR®
Tara@TomSmithHomes.com
601.990.5070 **office** | 601.407.4315 **cell**

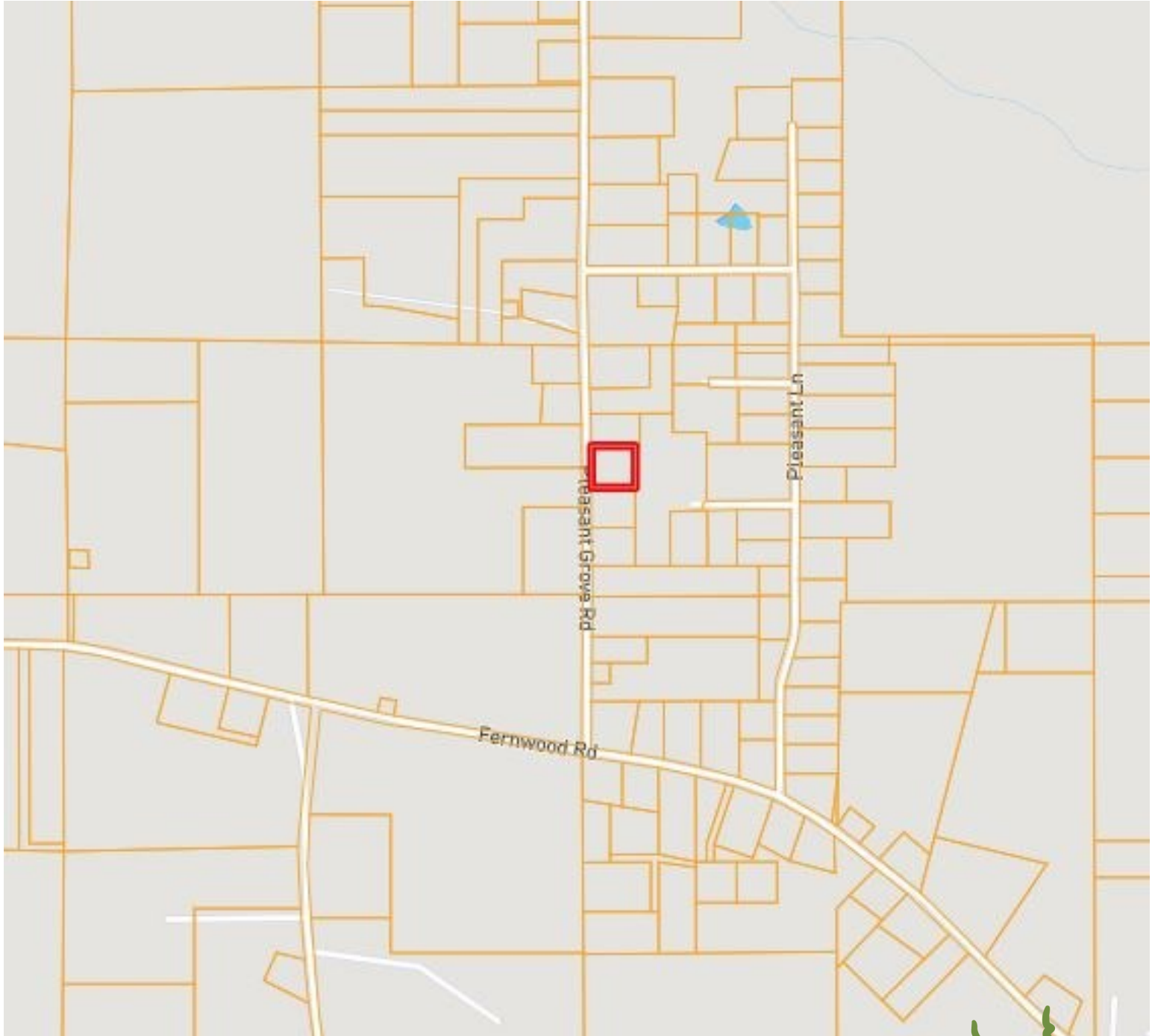


Expect More. Get More.

TomSmithLandandHomes.com

Information is believed to be accurate but not guaranteed.

Ownership Map



Call me today!

TARA WALKER SMITH, REALTOR®
Tara@TomSmithHomes.com
601.990.5070 **office** | 601.407.4315 **cell**

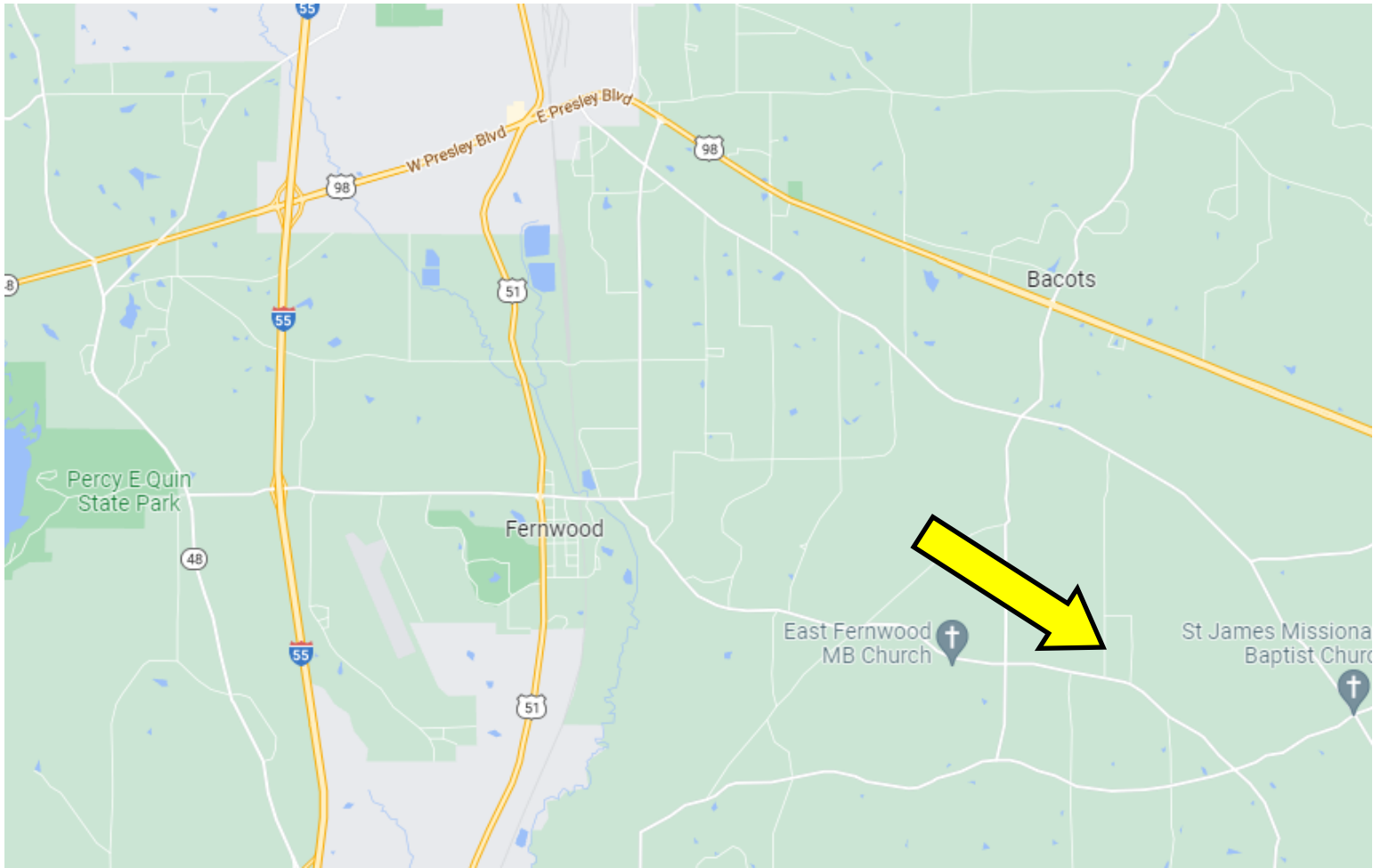


Expect More. Get More.

TomSmithLandandHomes.com

Information is believed to be accurate but not guaranteed.

Directional Map



Directions from the intersection of I-55 and US-98 in McComb, MS: Travel south on I-55S, in 2.0 miles, take Exit 13 toward Fernwood/Industrial Park, in .1 miles, turn left onto Airport Fernwood Rd, in 2.6 miles, turn right onto Fernwood Rd, in 4.2 miles, turn left onto Pleasant Grove Rd, in .3 miles, the property will be on the right.

Address: 1074 Pleasant Grove Rd, McComb, MS 39648

Call me today!

TARA WALKER SMITH, REALTOR®
Tara@TomSmithHomes.com
601.990.5070 **office** | 601.407.4315 **cell**



Expect More. Get More.

TomSmithLandandHomes.com

Information is believed to be accurate but not guaranteed.