

# 3.8± ACRE RESIDENTIAL LOT IN HARRISON COUNTY, MS



**\$19,900**

Look at these 3.8± residential acres in Pass Christian, MS, in Harrison County. This property offers extensive road frontage on Heirn Ave. This property would be ideal for a builder or investor looking to build more than one home/camp. Located minutes from the beach. If you are looking for property convenient to shopping, dining, casinos, fishing, boating and more, this property is for you! The property is located near I-59 and only one hour from New Orleans, LA!

Directions from US-90/Beach Blvd and Henderson Ave in Pass Christian, MS: Travel north on Henderson Ave, in .8 miles, turn right onto W North St, in .4 miles, the property will be on the right.



*Call me today!*

**TARA WALKER SMITH, REALTOR®**  
Tara@TomSmithHomes.com  
601.990.5070 office | 601.407.4315 cell



**TomSmithLandandHomes.com**

Information is believed to be accurate but not guaranteed.



*Call me today!*

**TARA WALKER SMITH, REALTOR®**  
Tara@TomSmithHomes.com  
601.990.5070 office | 601.407.4315 cell

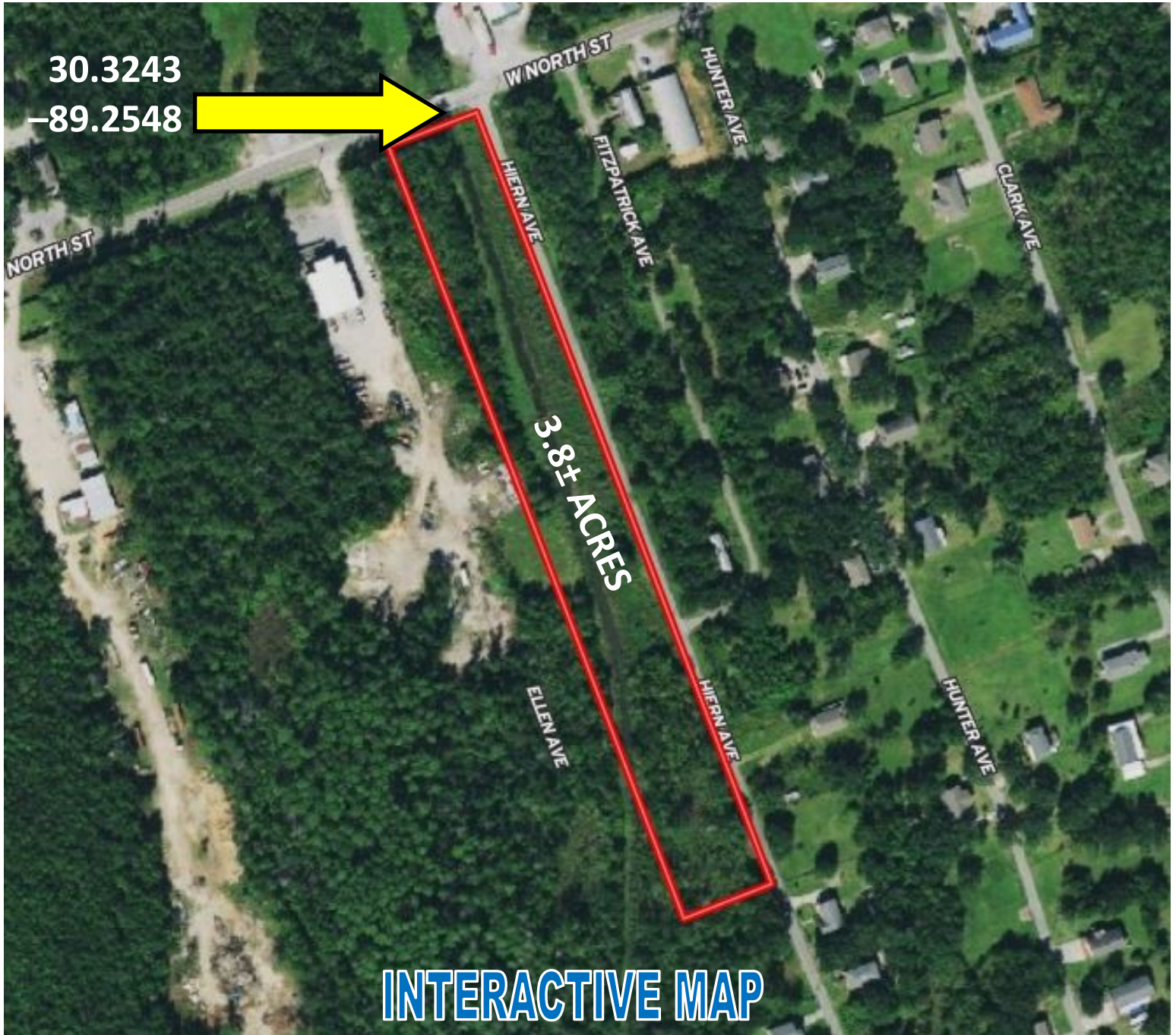


Expect More. Get More.

**TomSmithLandandHomes.com**

Information is believed to be accurate but not guaranteed.

# Aerial Map



*Call me today!*

**TARA WALKER SMITH, REALTOR®**  
Tara@TomSmithHomes.com  
601.990.5070 **office** | 601.407.4315 **cell**

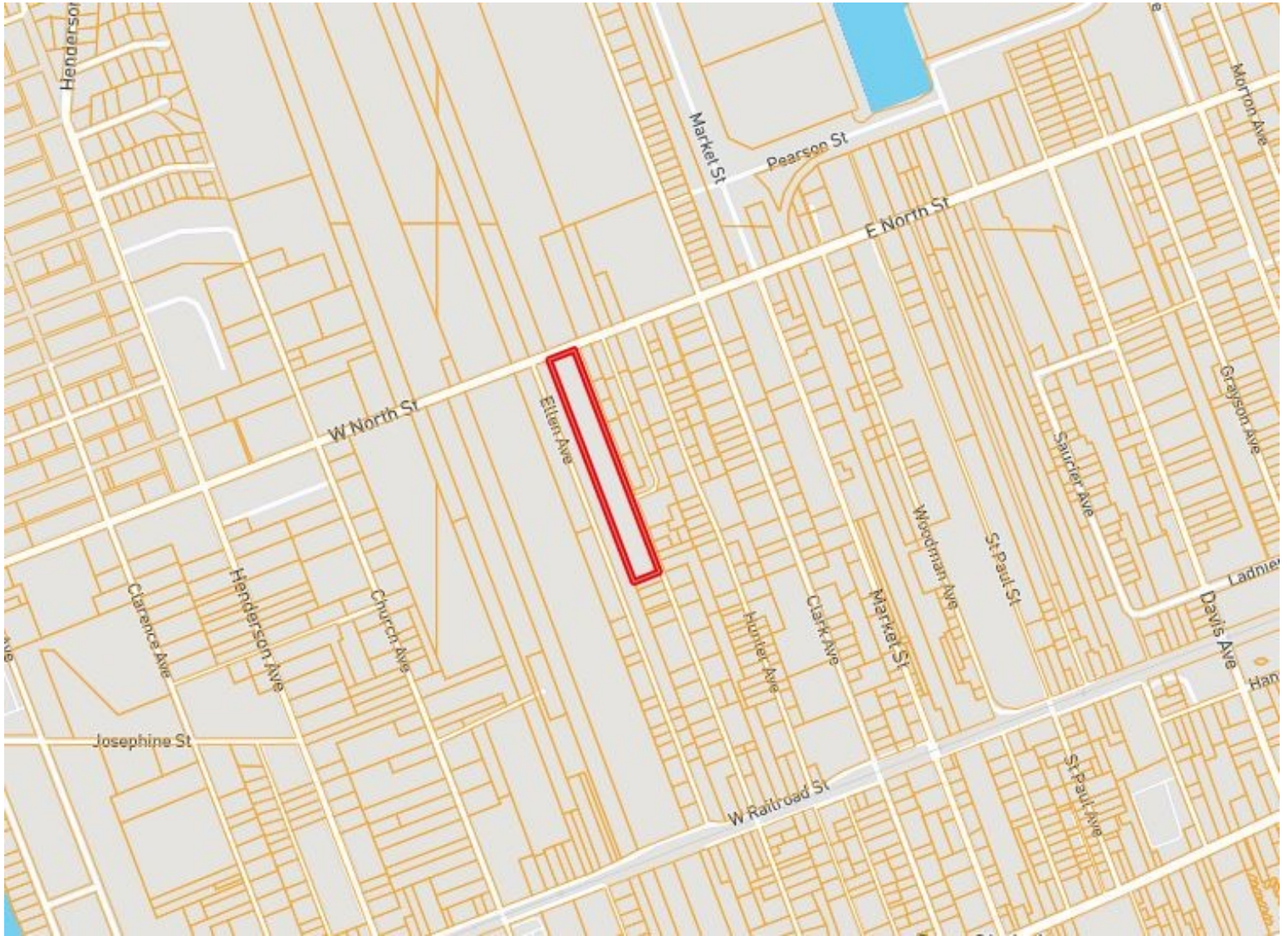


Expect More. Get More.

**TomSmithLandandHomes.com**

Information is believed to be accurate but not guaranteed.

# Ownership Map



*Call me today!*

**TARA WALKER SMITH, REALTOR®**  
Tara@TomSmithHomes.com  
601.990.5070 **office** | 601.407.4315 **cell**



Expect More. Get More.

**TomSmithLandandHomes.com**

Information is believed to be accurate but not guaranteed.

# Topo Map



*Call me today!*

**TARA WALKER SMITH, REALTOR®**  
Tara@TomSmithHomes.com  
601.990.5070 **office** | 601.407.4315 **cell**



Expect More. Get More.

**TomSmithLandandHomes.com**

Information is believed to be accurate but not guaranteed.

# Flood Map



*Call me today!*

**TARA WALKER SMITH, REALTOR®**  
Tara@TomSmithHomes.com  
601.990.5070 office | 601.407.4315 cell

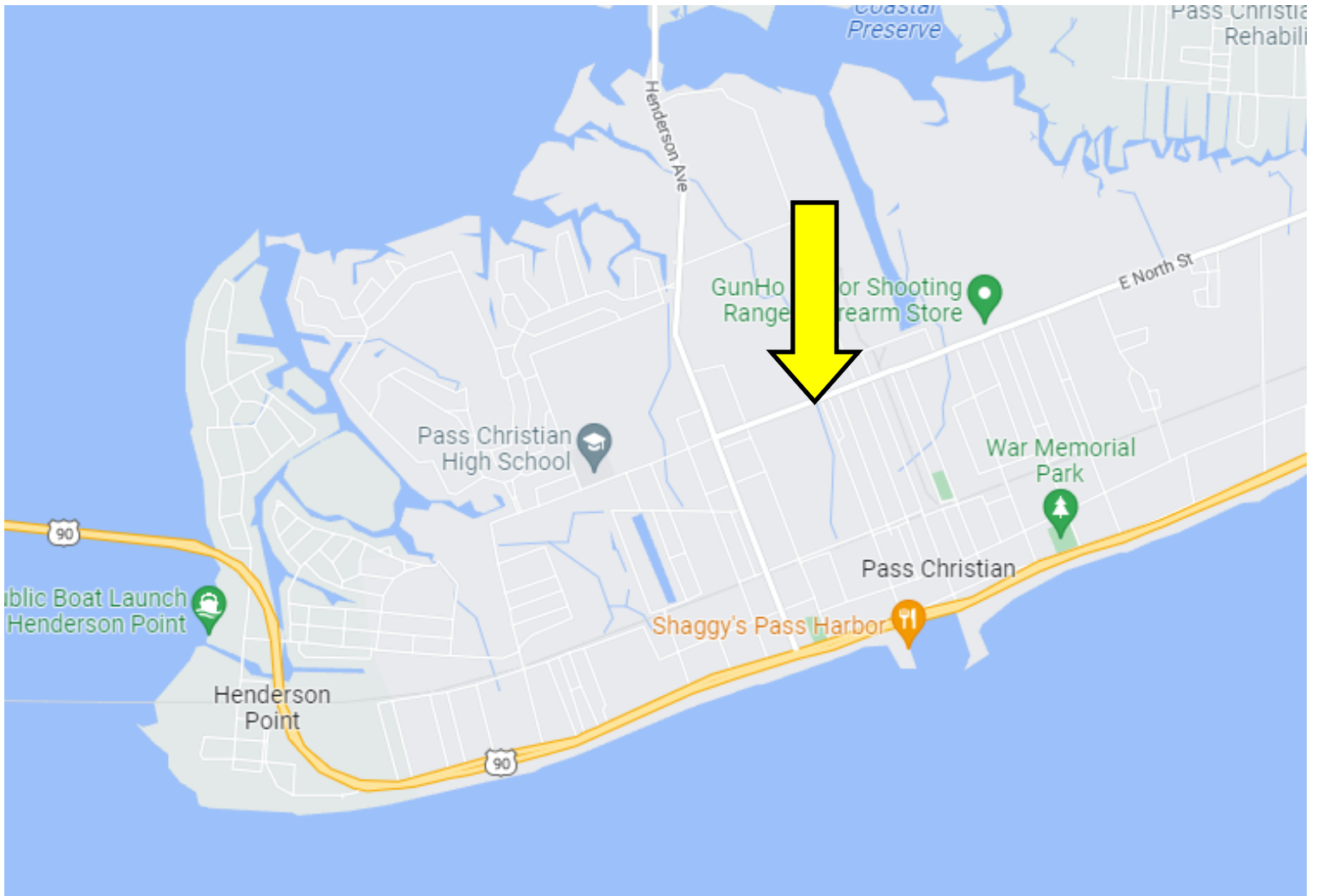


Expect More. Get More.

**TomSmithLandandHomes.com**

Information is believed to be accurate but not guaranteed.

# Directional Map



Directions from US-90/Beach Blvd and Henderson Ave in Pass Christian, MS: Travel north on Henderson Ave, in .8 miles, turn right onto W North St, in .4 miles, the property will be on the right.

## GOOGLE MAP LINK

*Call me today!*

**TARA WALKER SMITH, REALTOR®**  
Tara@TomSmithHomes.com  
601.990.5070 **office** | 601.407.4315 **cell**



Expect More. Get More.

**TomSmithLandandHomes.com**

Information is believed to be accurate but not guaranteed.