

# AMAZING 10± ACRE RECREATIONAL PROPERTY IN PIKE COUNTY, MS



1104 Pike 93 N, McComb, MS 39648

\$219,000

WOW! This waterfront property consists of a cabin and 10± acres on the Bogue Chitto River! The sale also includes the furniture (minus a few family pieces) and tractor with attachments! This cabin was built on a steel frame so maintenance is low. The cabin is three bedrooms and three baths. The living room boasts huge windows to let plenty of natural light in through the cabin. This would make a great short term rental since it is completely furnished. The walls are heart pine and let off an ambience that will take the stress away! There are three entrances to the property and the waterfront area could house multiple camp sites to bring in additional income, but far enough away that the cabin still has the secluded feeling! All appliances remain with the property as well! The 10± acres is mostly scattered trees and open areas, with approximately 220± feet of frontage on the Bogue Chitto River.

Directions from the intersection of US-51 and US-98 in McComb, MS: Travel east on US-90E, in 8.1 miles, turn left onto Magnolia Holmesville Rd, in 1.3 miles, continue onto Pike 93 Central, in .2 miles, continue onto Tennessee St, in .2 miles, Tennessee St turns slightly right and becomes Madison St, in .1 miles, continue onto Pike 93 North, in .3 miles, the property will be on the right.

Address: 1104 Pike 93 North, McComb, MS 39648



Call me today!

**TRINITY WEBB**, REALTOR®  
Trinity@TomSmithHomes.com  
601.990.5070 office | 769.218.7860 cell



Expect More. Get More.

**TomSmithLandandHomes.com**

Information is believed to be accurate but not guaranteed.





*Call me today!*

**TRINITY WEBB, REALTOR®**

Trinity@TomSmithHomes.com

601.990.5070 office | 769.218.7860 cell



**TomSmithLandandHomes.com**

Information is believed to be accurate but not guaranteed.





*Call me today!*

**TRINITY WEBB, REALTOR®**

Trinity@TomSmithHomes.com

601.990.5070 **office** | 769.218.7860 **cell**



Expect More. Get More.

**TomSmithLandandHomes.com**

Information is believed to be accurate but not guaranteed.





*Call me today!*

**TRINITY WEBB, REALTOR®**

Trinity@TomSmithHomes.com

601.990.5070 **office** | 769.218.7860 **cell**



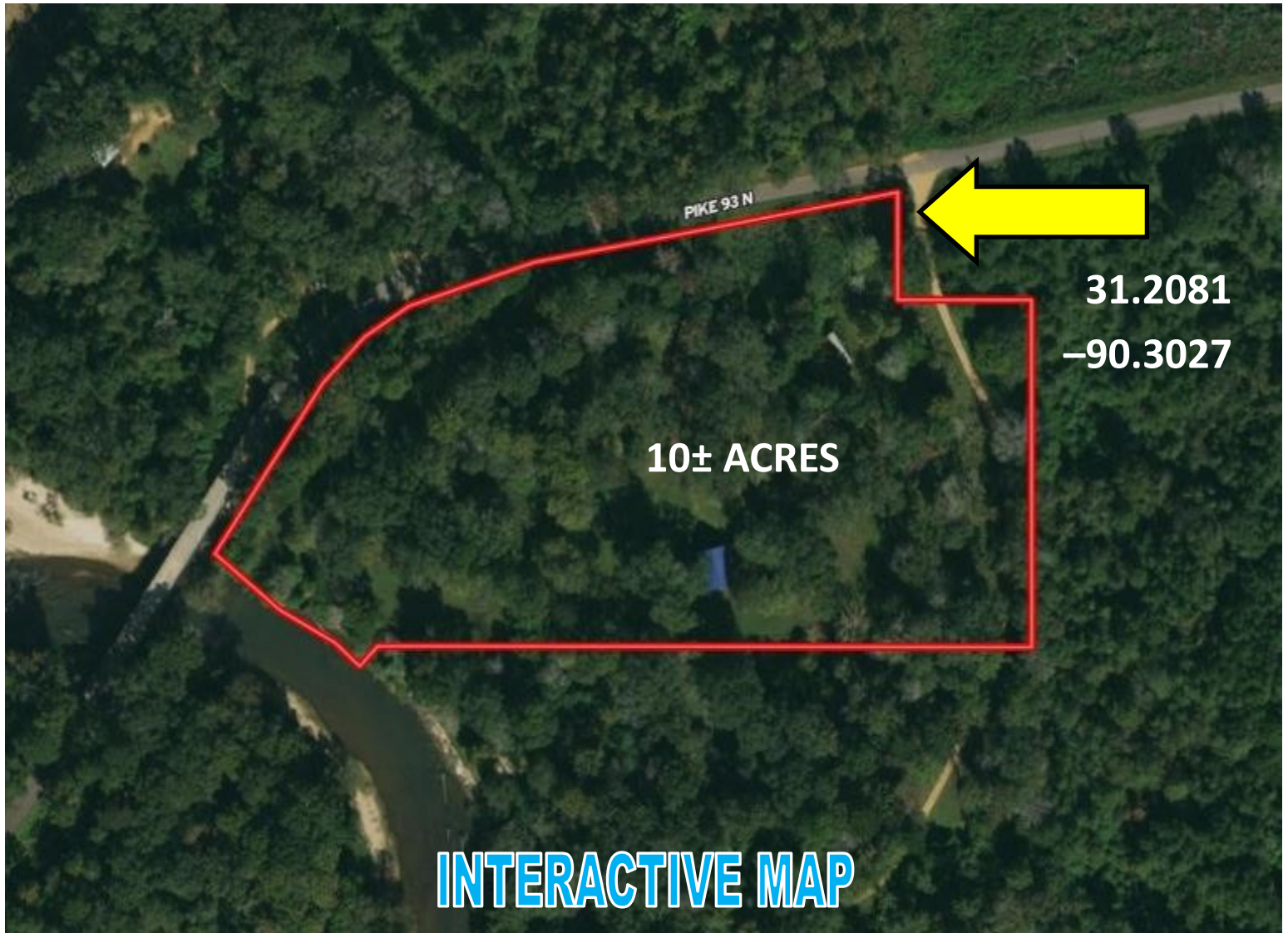
Expect More. Get More.

**TomSmithLandandHomes.com**

Information is believed to be accurate but not guaranteed.



# AERIAL MAP



*Call me today!*

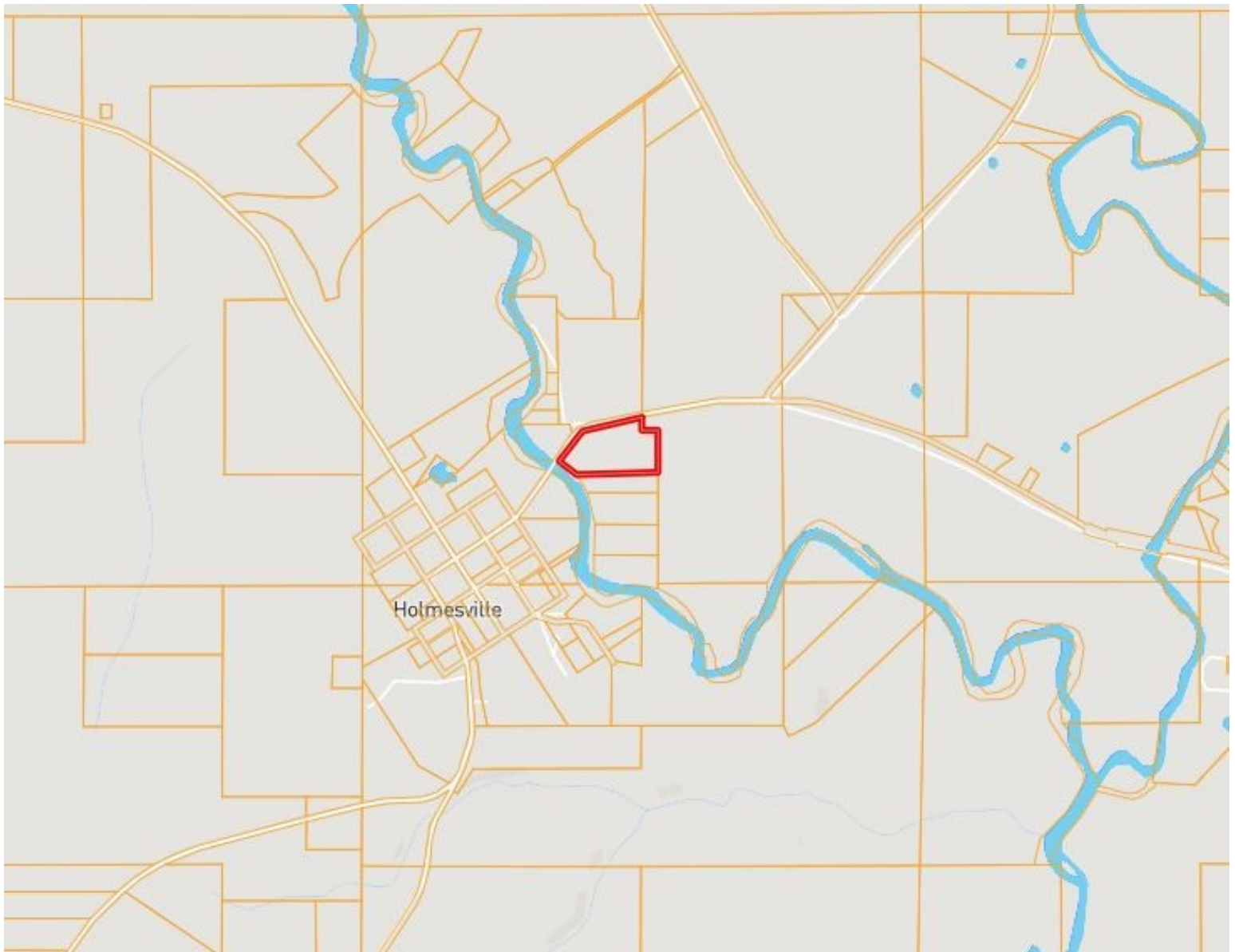
**TRINITY WEBB**, REALTOR®  
Trinity@TomSmithHomes.com  
601.990.5070 **office** | 769.218.7860 **cell**



**TomSmithLandandHomes.com**

Information is believed to be accurate but not guaranteed.

# OWNERSHIP MAP



*Call me today!*

**TRINITY WEBB**, REALTOR®

Trinity@TomSmithHomes.com

601.990.5070 **office** | 769.218.7860 **cell**

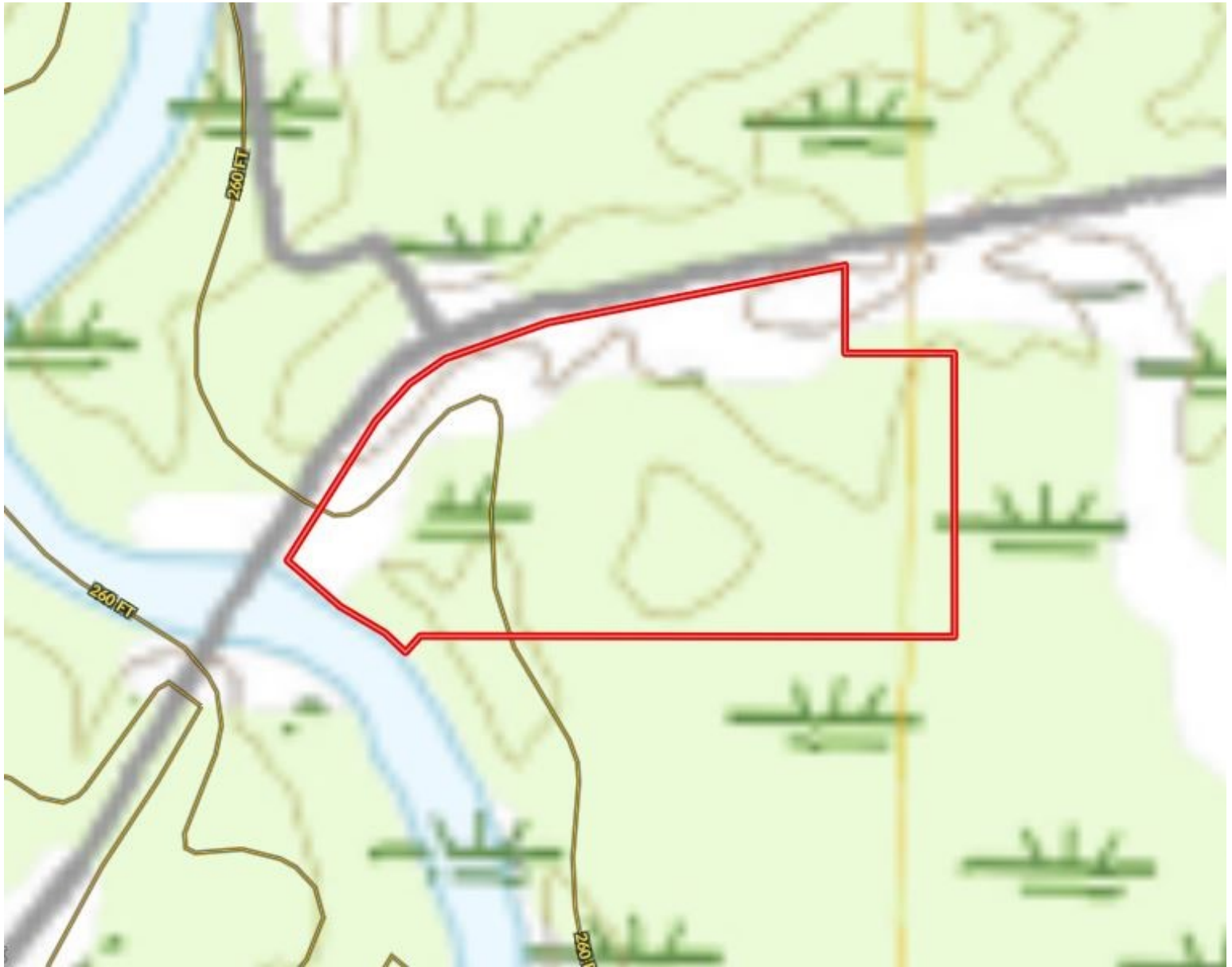


**TomSmithLandandHomes.com**

Information is believed to be accurate but not guaranteed.



# TOPO MAP



*Call me today!*

**TRINITY WEBB**, REALTOR®

Trinity@TomSmithHomes.com

601.990.5070 **office** | 769.218.7860 **cell**



Expect More. Get More.

**TomSmithLandandHomes.com**

Information is believed to be accurate but not guaranteed.

# SOIL MAP



CODE	DESCRIPTION	ACRES	%	CPI	NCCPI	CAP	
Wa	Waverly silt loam	5.36	62.91%	-	70	3w	
Io	Iuka and Ochlockonee soils	3.17	37.21%	-	58	2w	

*Call me today!*

**TRINITY WEBB**, REALTOR®  
 Trinity@TomSmithHomes.com  
 601.990.5070 **office** | 769.218.7860 **cell**

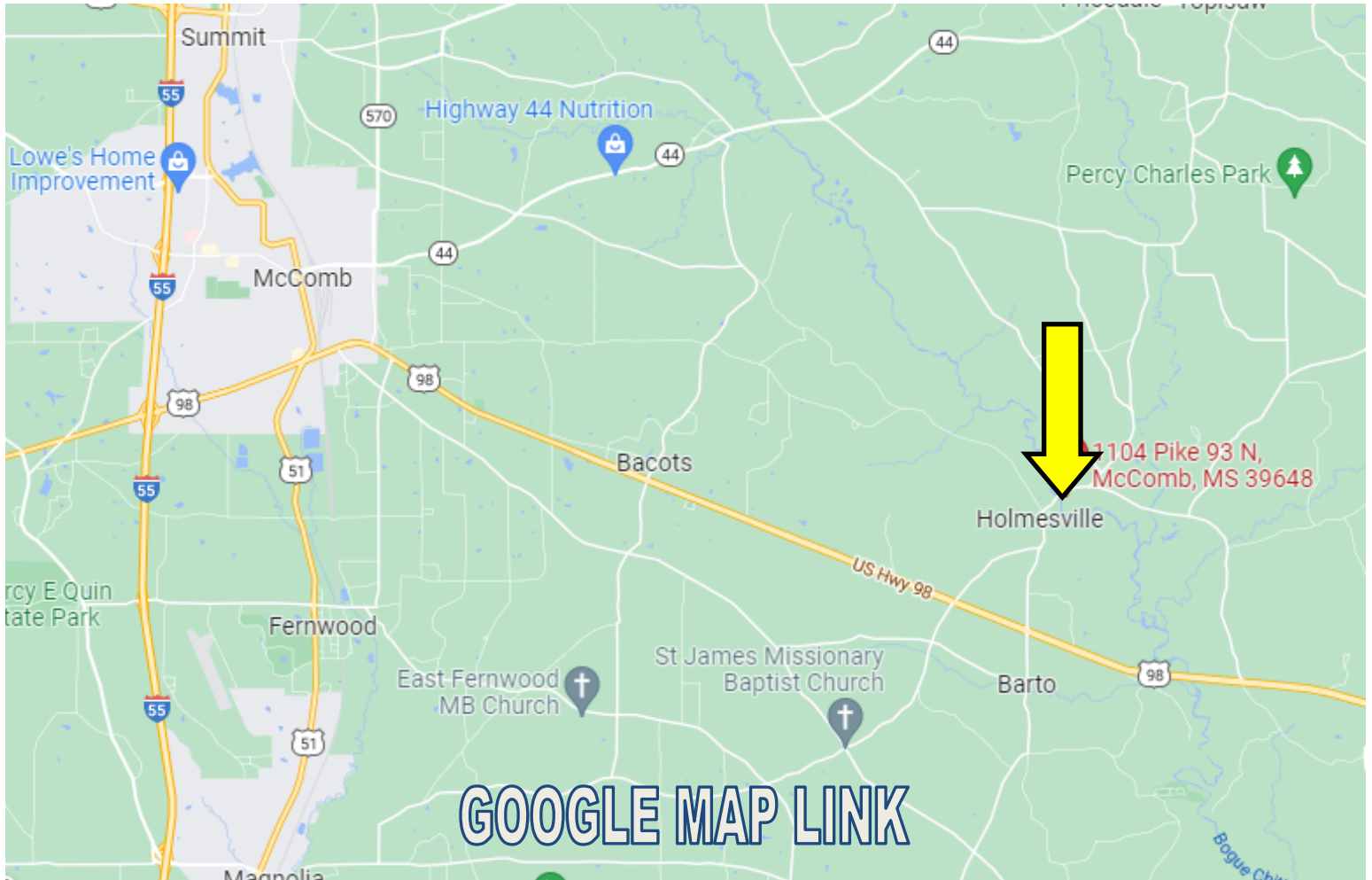


**TomSmithLandandHomes.com**

Information is believed to be accurate but not guaranteed.



# DIRECTIONAL MAP



Directions from the intersection of US-51 and US-98 in McComb, MS: Travel east on US-90E, in 8.1 miles, turn left onto Magnolia Holmesville Rd, in 1.3 miles, continue onto Pike 93 Central, in .2 miles, continue onto Tennessee St, in .2 miles, Tennessee St turns slightly right and becomes Madison St, in .1 miles, continue onto Pike 93 North, in .3 miles, the property will be on the right.

Address: 1104 Pike 93 North, McComb, MS 39648

*Call me today!*

**TRINITY WEBB**, REALTOR®

Trinity@TomSmithHomes.com

601.990.5070 **office** | 769.218.7860 **cell**



**TomSmithLandandHomes.com**

Information is believed to be accurate but not guaranteed.