

HOME ON 17.4± ACRES IN LINCOLN COUNTY, MS



461 Highway 84W, Brookhaven, MS 39648

\$329,000

Wow! Take a look at this beautiful country home on 17.41± surveyed acres in Lincoln County, MS, minutes from town but so secluded. Drive down a quarter mile gated driveway, passing through gorgeous pastures and two cattle grates, and you are sure to enjoy the view! As you pull up to this home, you can feel the stress of the world wash away. Enjoy coffee on your front porch, overlooking the pastures and mature trees in the yard. Upon entering the home, you will find brick paver floors with a huge brick hearth and a wood burning fireplace with a blower. The kitchen has a vintage stove, pantry, and a separate breakfast area. The laundry room is so spacious with storage and a sink! There is a bedroom and bathroom downstairs. Upstairs you will find a large game room/playroom. Off of the game room are two bedrooms (with walk-in closets) and a huge bathroom. There is also a room that could be easily completed to make a 4th bedroom. The 17.41 ± acres consist of pasture land and approx. one acre of woods behind the home.

Directions from I-55 N in Brookhaven, MS: Take Exit 38 to merge onto US-84 W toward Natchez, in 3.7 miles, take a sharp left turn onto US-84 E, in 1.7 miles, the property will be located on the left.

Address: 461 US-84 Brookhaven, MS, 39601



Call me today!

TRINITY WEBB, REALTOR®
Trinity@TomSmithHomes.com
601.990.5070 **office** | 769.218.7860 **cell**



TomSmithLandandHomes.com

Information is believed to be accurate but not guaranteed.



Call me today!

TRINITY WEBB, REALTOR®

Trinity@TomSmithHomes.com

601.990.5070 **office** | 769.218.7860 **cell**



TomSmithLandandHomes.com

Information is believed to be accurate but not guaranteed.



Call me today!

TRINITY WEBB, REALTOR®

Trinity@TomSmithHomes.com

601.990.5070 **office** | 769.218.7860 **cell**



Expect More. Get More.

TomSmithLandandHomes.com

Information is believed to be accurate but not guaranteed.



Call me today!

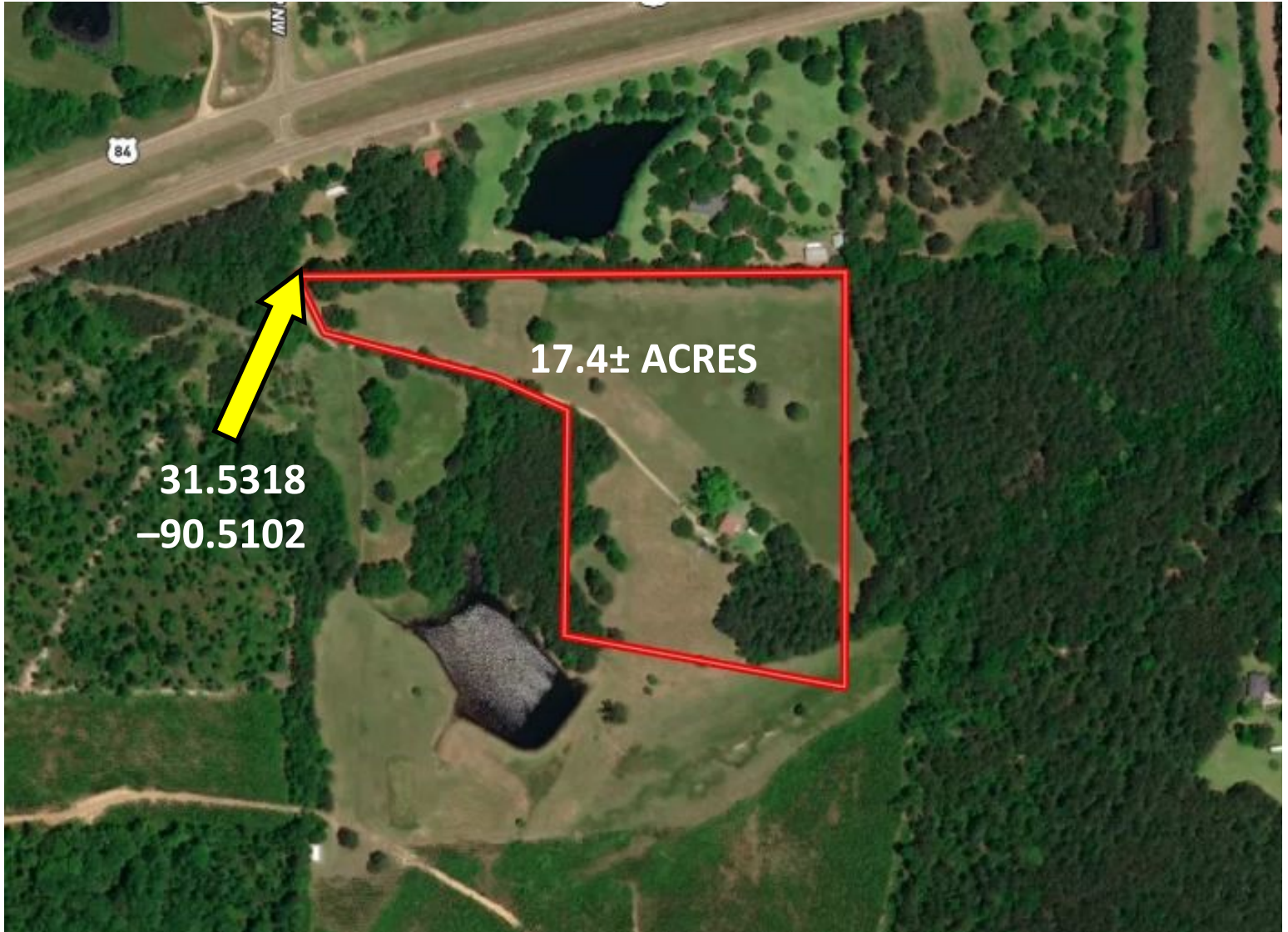
TRINITY WEBB, REALTOR®
 Trinity@TomSmithHomes.com
 601.990.5070 **office** | 769.218.7860 **cell**



TomSmithLandandHomes.com

Information is believed to be accurate but not guaranteed.

AERIAL MAP



INTERACTIVE MAP

Call me today!

TRINITY WEBB, REALTOR®

Trinity@TomSmithHomes.com

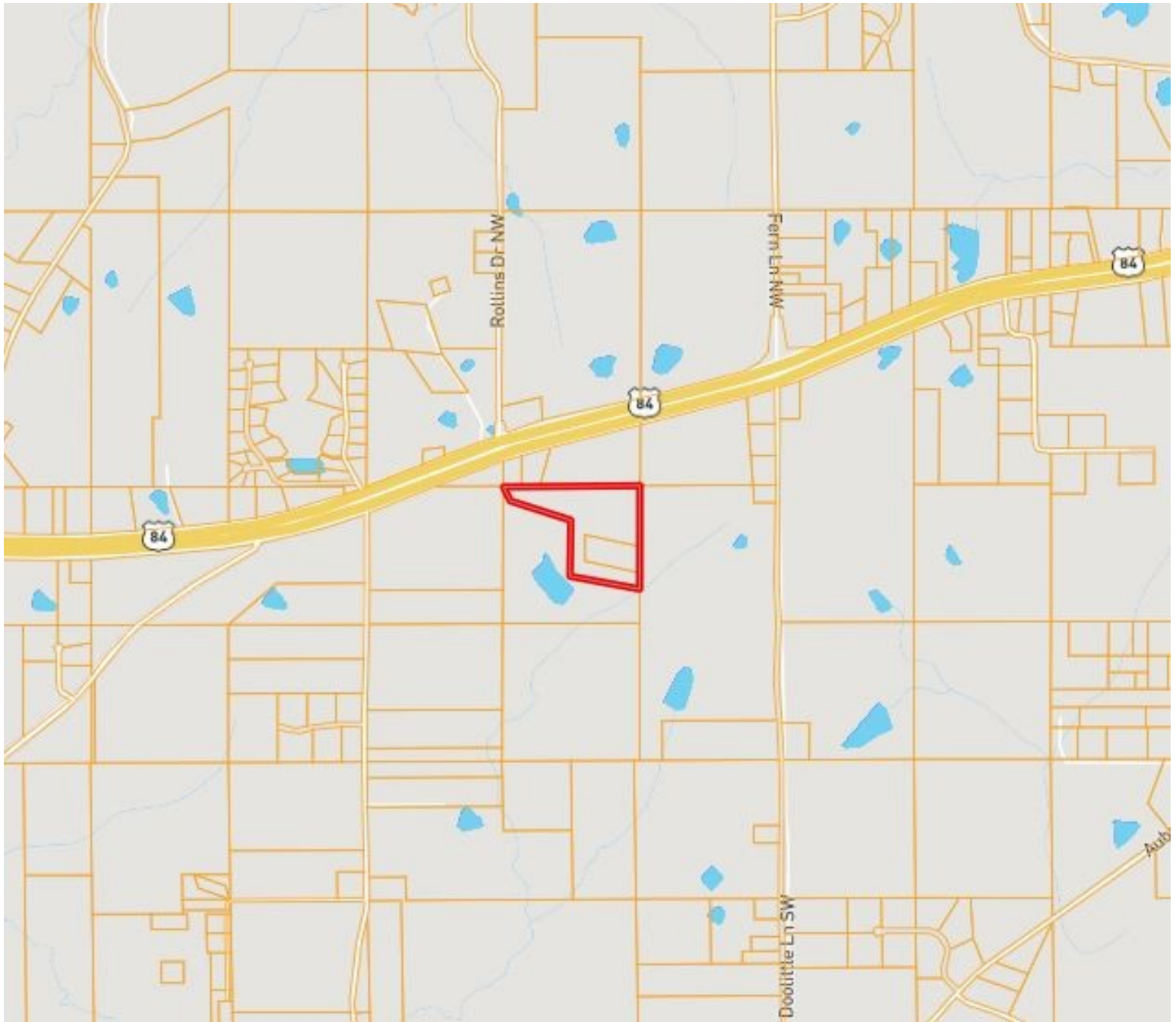
601.990.5070 **office** | 769.218.7860 **cell**



TomSmithLandandHomes.com

Information is believed to be accurate but not guaranteed.

OWNERSHIP MAP



Call me today!

TRINITY WEBB, REALTOR®

Trinity@TomSmithHomes.com

601.990.5070 **office** | 769.218.7860 **cell**



Expect More. Get More.

TomSmithLandandHomes.com

Information is believed to be accurate but not guaranteed.

TOPO MAP



Call me today!

TRINITY WEBB, REALTOR®

Trinity@TomSmithHomes.com

601.990.5070 **office** | 769.218.7860 **cell**



Expect More. Get More.

TomSmithLandandHomes.com

Information is believed to be accurate but not guaranteed.

FLOOD MAP



Call me today!

TRINITY WEBB, REALTOR®

Trinity@TomSmithHomes.com

601.990.5070 **office** | 769.218.7860 **cell**



TomSmithLandandHomes.com

Information is believed to be accurate but not guaranteed.

SOIL MAP



Call me today!

TRINITY WEBB, REALTOR®

Trinity@TomSmithHomes.com

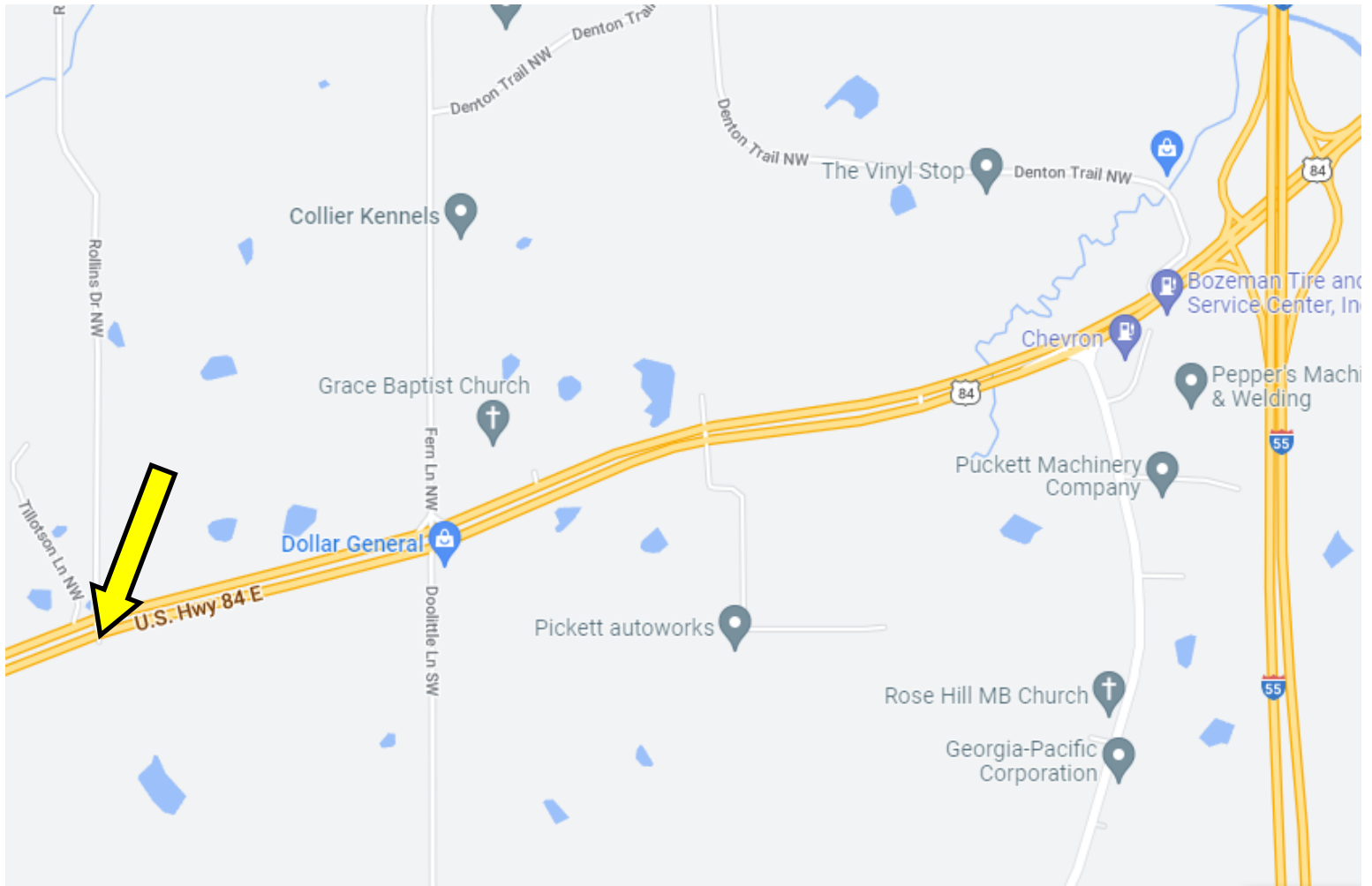
601.990.5070 **office** | 769.218.7860 **cell**



TomSmithLandandHomes.com

Information is believed to be accurate but not guaranteed.

DIRECTIONAL MAP



Directions from I-55 N in Brookhaven, MS: Take Exit 38 to merge onto US-84 W toward Natchez, in 3.7 miles, take a sharp left turn onto US-84 E, in 1.7 miles, the property will be located on the left.

Address: 461 US-84 Brookhaven, MS, 39601

Call me today!

TRINITY WEBB, REALTOR®

Trinity@TomSmithHomes.com

601.990.5070 **office** | 769.218.7860 **cell**



Expect More. Get More.

TomSmithLandandHomes.com

Information is believed to be accurate but not guaranteed.