

INCOME PRODUCING DUPLEX ON 1± ACRES IN PEARL RIVER COUNTY, MS



\$119,500

3047 JACKSON LANDING RD, PICAYUNE, MS 39466

This income producing property is located at 3047 Jackson Landing Rd, Picayune, MS, in Pearl River County. This property is a duplex, and both sides are currently being rented. The duplex sits on 1± acres and features a privacy fence and two driveways. The units of the duplex are both two bedrooms and one bath. The property is located less than 50 miles from New Orleans, LA, and the Mississippi Gulf Coast.

Directions from the intersection of Goodyear BLVD and US-11 in Picayune, MS: Travel south on US-11S, in .6 miles, turn right onto Bruce St, in .5 miles, continue straight onto Jackson Landing Rd, in 1.6 miles, turn left onto Luther Davis Rd, in .8 miles, turn left onto Jackson Landing Rd, in .1 miles, the property will be on the left.

Address: 3047 Jackson Landing Rd, Picayune, MS 39466



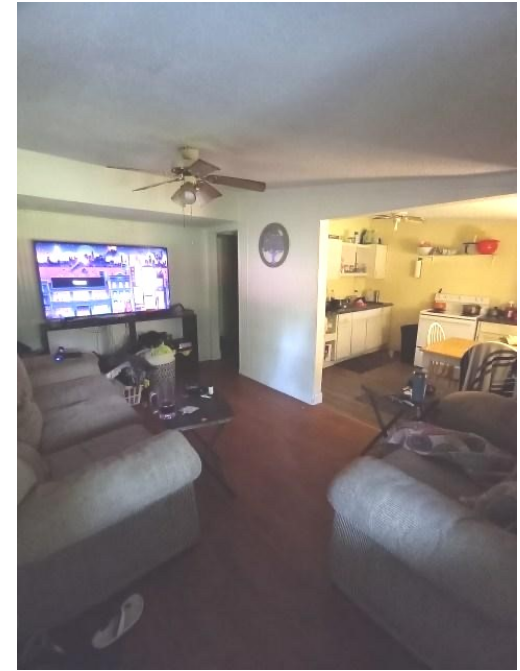
Call me today!

TARA WALKER SMITH, REALTOR®
Tara@TomSmithHomes.com
601.990.5070 office | 601.407.4315 cell



TomSmithLandandHomes.com

Information is believed to be accurate but not guaranteed.



Call me today!

TARA WALKER SMITH, REALTOR®
Tara@TomSmithHomes.com
601.990.5070 office | 601.407.4315 cell



TomSmithLandandHomes.com

Information is believed to be accurate but not guaranteed.



Call me today!

TARA WALKER SMITH, REALTOR®
Tara@TomSmithHomes.com
601.990.5070 office | 601.407.4315 cell

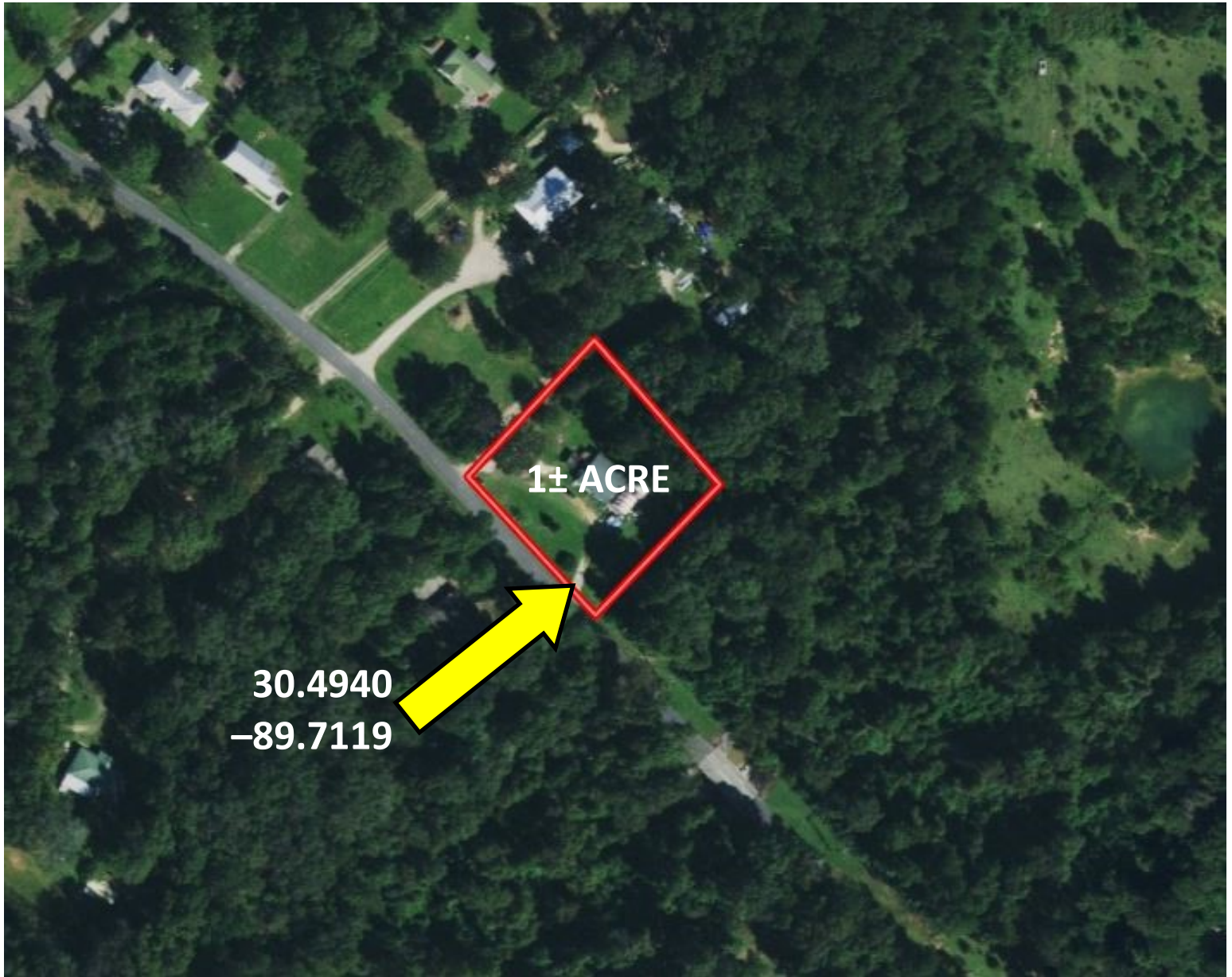


Expect More. Get More.

TomSmithLandandHomes.com

Information is believed to be accurate but not guaranteed.

Aerial Map



INTERACTIVE MAP

Call me today!

TARA WALKER SMITH, REALTOR®
Tara@TomSmithHomes.com
601.990.5070 office | 601.407.4315 cell

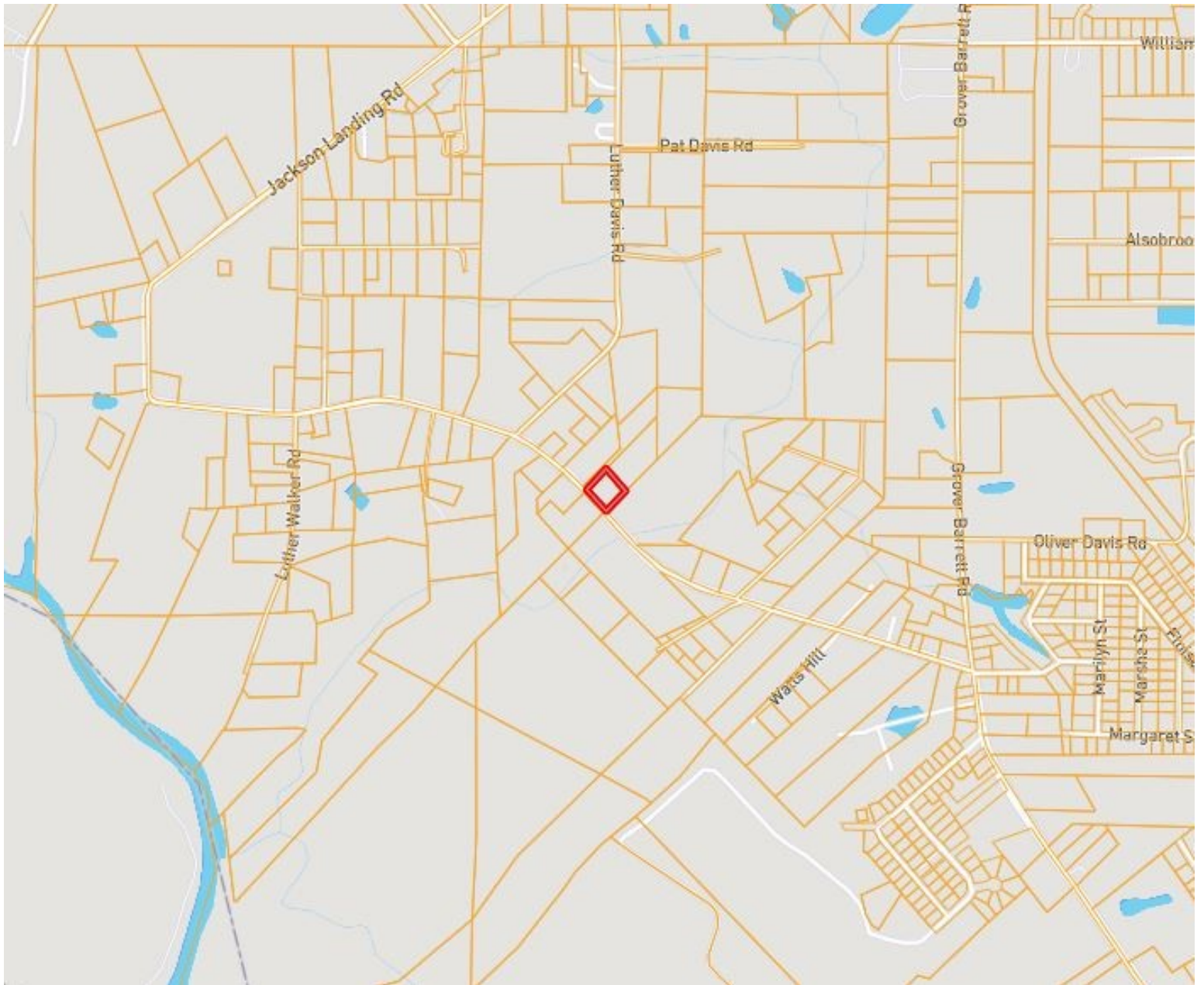


Expect More. Get More.

TomSmithLandandHomes.com

Information is believed to be accurate but not guaranteed.

Ownership Map



Call me today!

TARA WALKER SMITH, REALTOR®
Tara@TomSmithHomes.com
601.990.5070 **office** | 601.407.4315 **cell**



Expect More. Get More.

TomSmithLandandHomes.com

Information is believed to be accurate but not guaranteed.

Flood Map



Call me today!

TARA WALKER SMITH, REALTOR®
Tara@TomSmithHomes.com
601.990.5070 office | 601.407.4315 cell

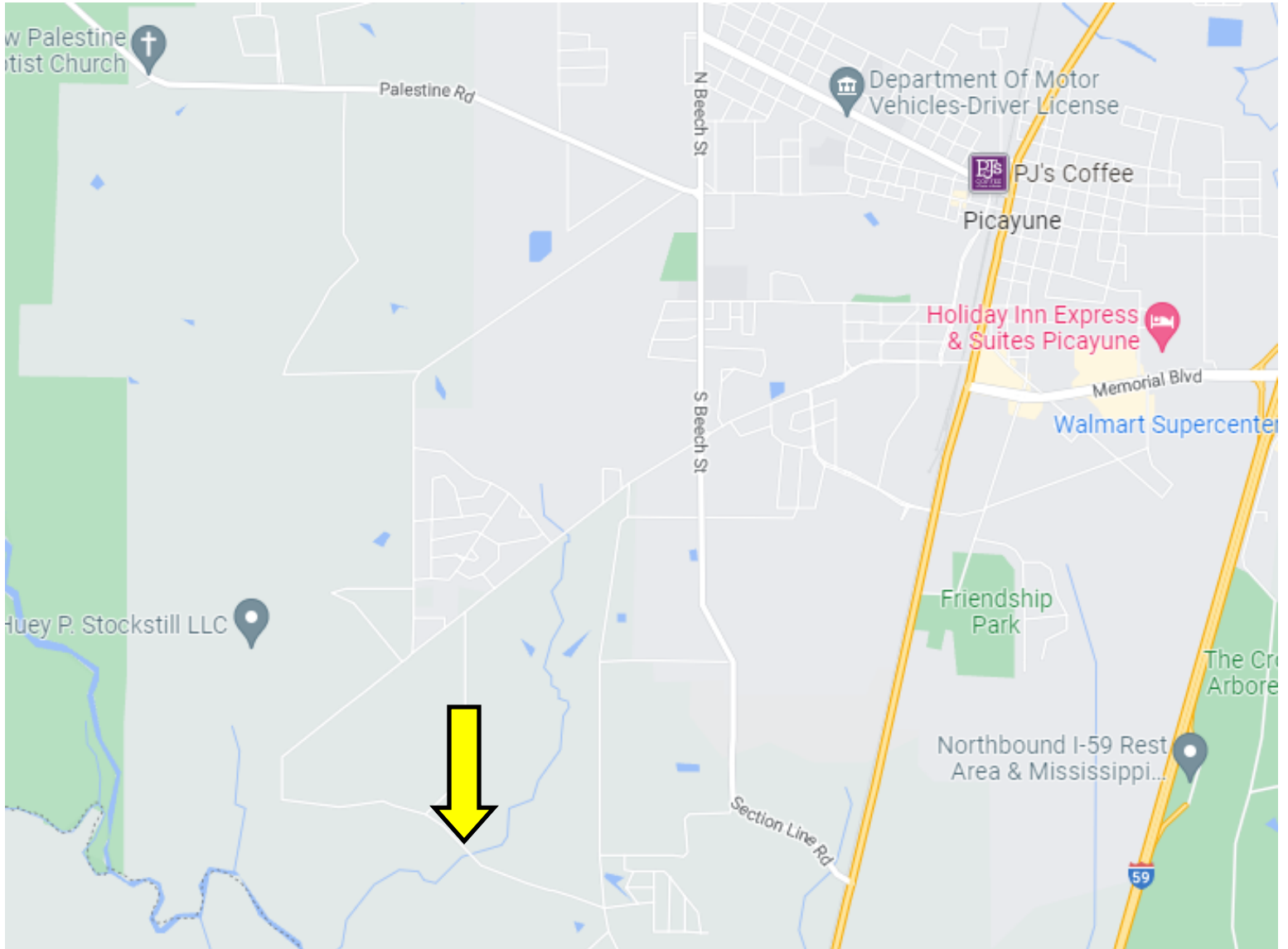


Expect More. Get More.

TomSmithLandandHomes.com

Information is believed to be accurate but not guaranteed.

Directional Map



Directions from the intersection of Goodyear BLVD and US-11 in Picayune, MS: Travel south on US-11S, in .6 miles, turn right onto Bruce St, in .5 miles, continue straight onto Jackson Landing Rd, in 1.6 miles, turn left onto Luther Davis Rd, in .8 miles, turn left onto Jackson Landing Rd, in .1 miles, the property will be on the left.

Address: 3047 Jackson Landing Rd, Picayune, MS 39466

Call me today!

TARA WALKER SMITH, REALTOR®
Tara@TomSmithHomes.com
601.990.5070 **office** | 601.407.4315 **cell**



Expect More. Get More.

TomSmithLandandHomes.com

Information is believed to be accurate but not guaranteed.