

# 3 BED/2 BATH HOME ON 10± ACRES IN HANCOCK COUNTY, MS



2549 Longleaf Dr, Perkinston, MS 39573

\$215,000

Are you looking for a great home in the country with room to roam? This three bedroom, two bath, 1,750sqft home sitting on 10± acres in Hancock County, MS, may be the property for you! Located just 30 miles from the Mississippi Gulf Coast which offers many outdoor activities, casinos, shopping and dining and located near I-49 between Hattiesburg and the MS Gulf Coast, in Perkinston, MS. With a personal touch this could be the home of your dreams, especially with the beautiful views from either the front or back porch. The wooded acreage offers seclusion and abundant wildlife. Located 1 hr and 45 mins from New Orleans, LA.

Directions from the intersection of US-49 and Old Highway 49 in Perkinston, MS: Travel south on US-49S, in 9.6 miles, turn right onto Church Ave, in .6 miles, turn right onto 3rd St, in .2 miles, turn left onto Old Hwy 49, in .6 miles, turn right onto Saucier Lizana Rd, in 5.8 miles, turn right onto Herman Ladner Rd, in 4.1 miles, turn right onto MS-53N, in 8.9 miles, turn left onto MS-603S, in 1 mile, turn right onto Caesar Necaize Rd, in 4.0 miles, turn left onto Lake Cypress Dr, in 3.1 miles, turn left onto Longleaf Dr, the property will be on the left in .7 miles.

Address: 2549 Longleaf Dr, Perkinston, MS 39573

*Call me today!*

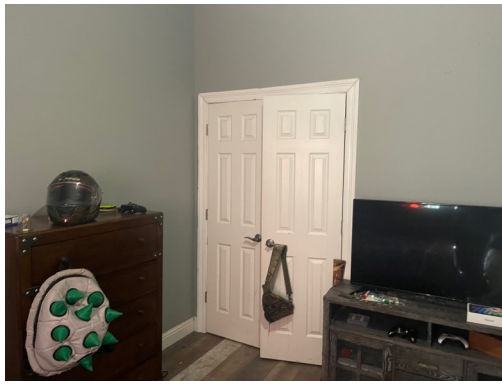
**TARA WALKER SMITH**, REALTOR®  
Tara@TomSmithHomes.com  
601.990.5070 office | 601.407.4315 cell



**TomSmithLandandHomes.com**

Information is believed to be accurate but not guaranteed.





*Call me today!*

**TARA WALKER SMITH, REALTOR®**  
Tara@TomSmithHomes.com  
601.990.5070 office | 601.407.4315 cell



**TomSmithLandandHomes.com**

Information is believed to be accurate but not guaranteed.





*Call me today!*

**TARA WALKER SMITH, REALTOR®**  
Tara@TomSmithHomes.com  
601.990.5070 office | 601.407.4315 cell



**TomSmithLandandHomes.com**

Information is believed to be accurate but not guaranteed.





*Call me today!*

**TARA WALKER SMITH, REALTOR®**  
Tara@TomSmithHomes.com  
601.990.5070 office | 601.407.4315 cell



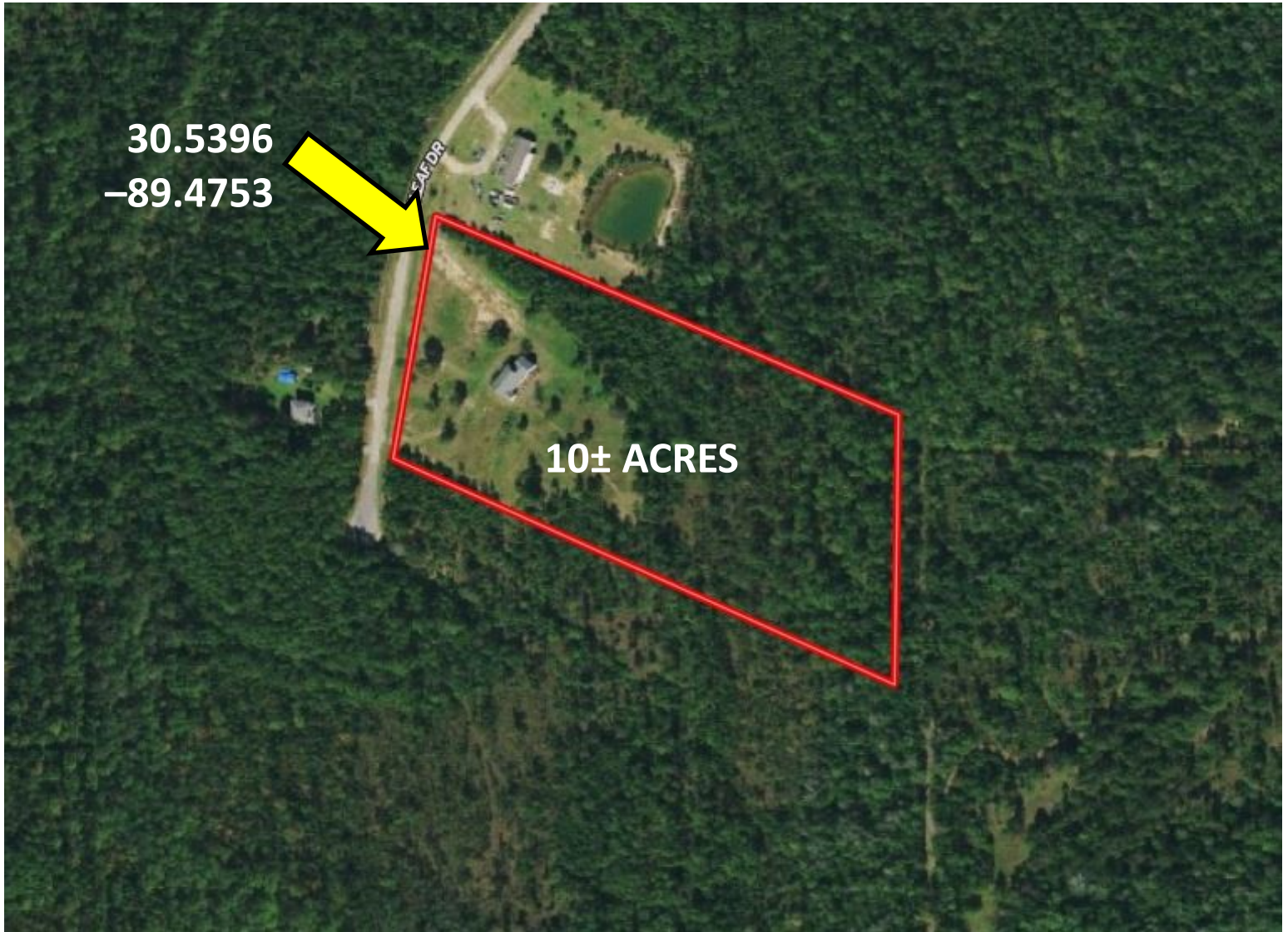
Expect More. Get More.

**TomSmithLandandHomes.com**

Information is believed to be accurate but not guaranteed.



# Aerial Map



## INTERACTIVE MAP

*Call me today!*

**TARA WALKER SMITH, REALTOR®**  
Tara@TomSmithHomes.com  
601.990.5070 **office** | 601.407.4315 **cell**

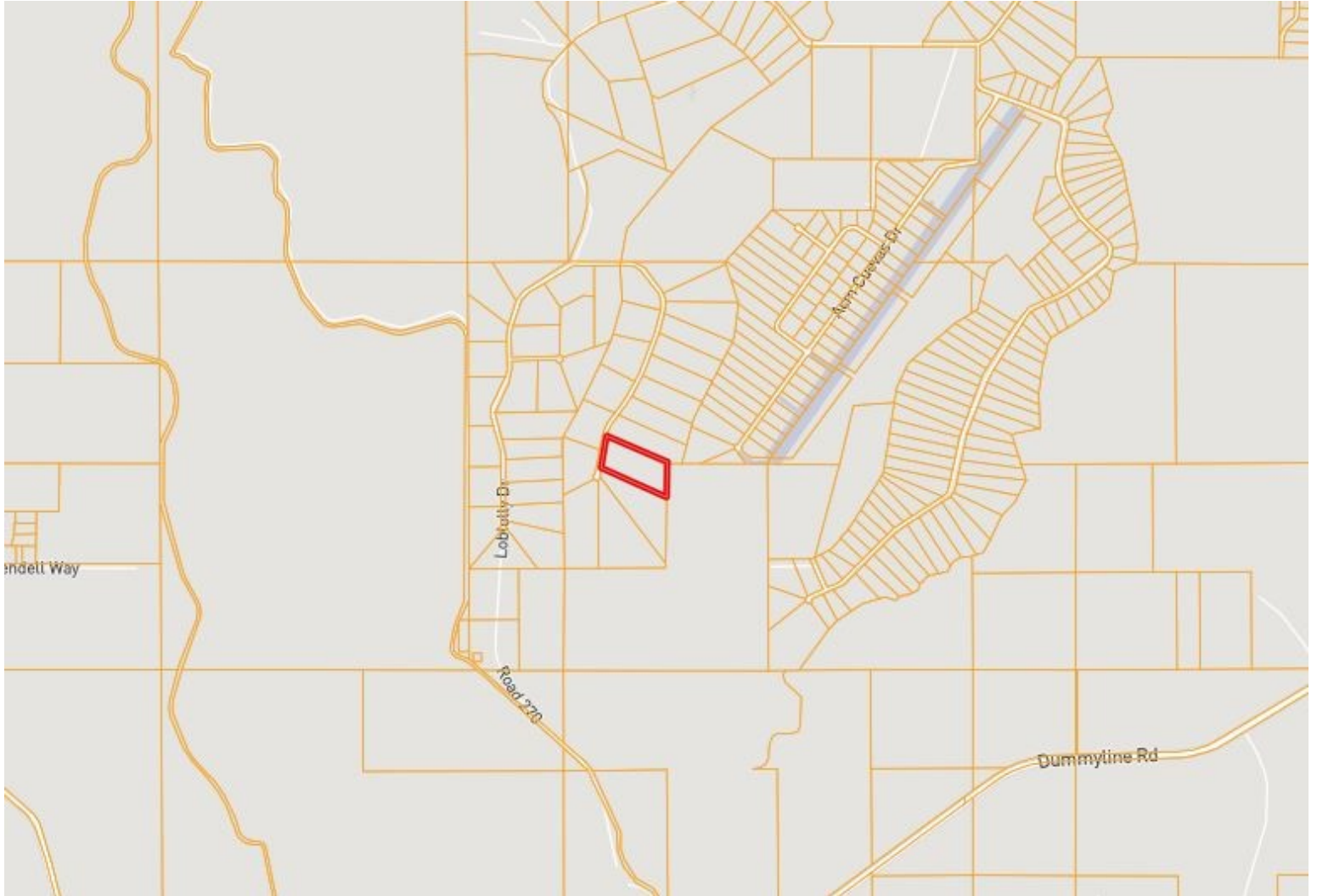


Expect More. Get More.

**TomSmithLandandHomes.com**

Information is believed to be accurate but not guaranteed.

# Ownership Map



*Call me today!*

**TARA WALKER SMITH, REALTOR®**  
Tara@TomSmithHomes.com  
601.990.5070 **office** | 601.407.4315 **cell**



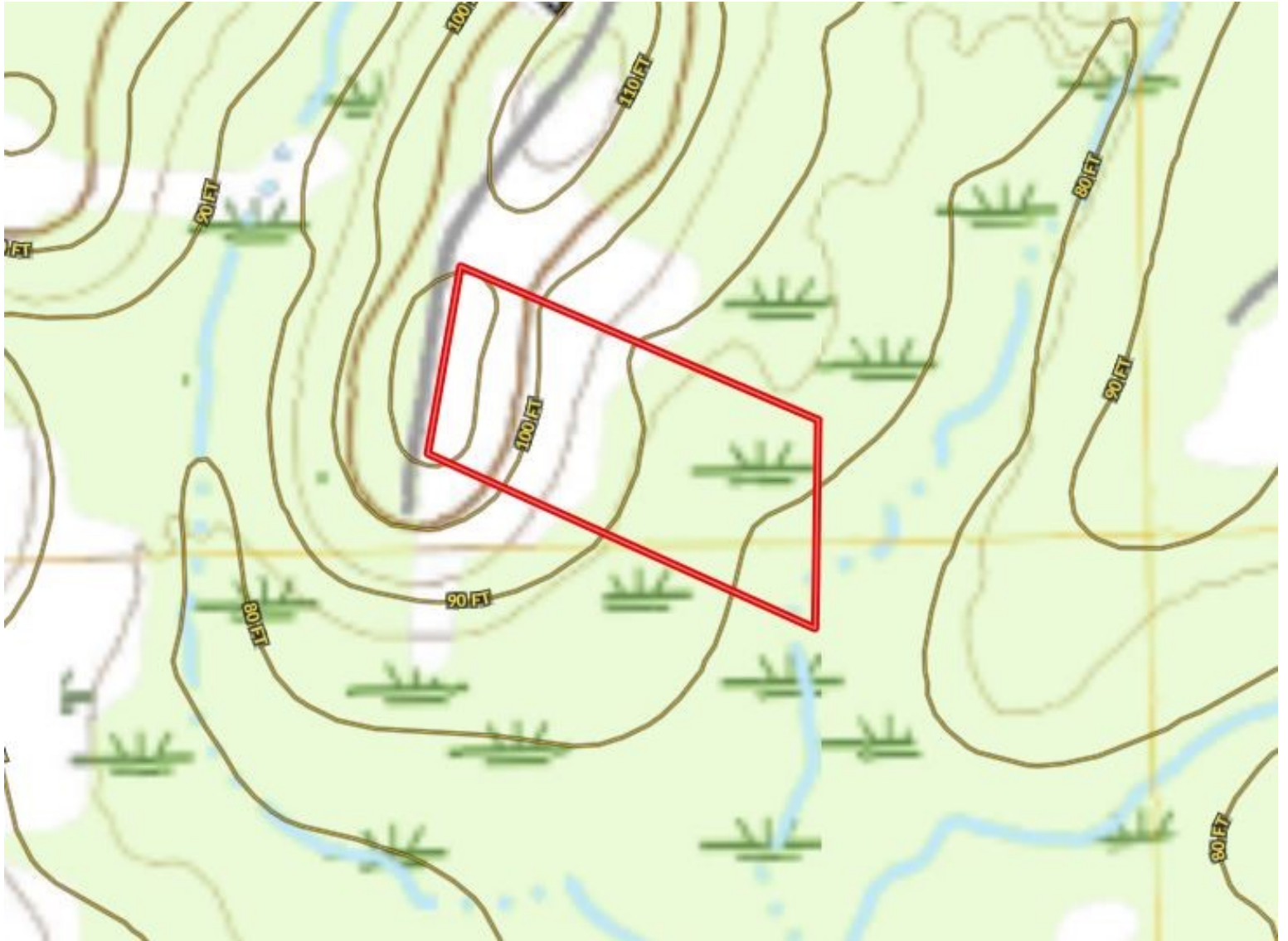
Expect More. Get More.

**TomSmithLandandHomes.com**

Information is believed to be accurate but not guaranteed.



# Topo Map



*Call me today!*

**TARA WALKER SMITH, REALTOR®**  
Tara@TomSmithHomes.com  
601.990.5070 office | 601.407.4315 cell



Expect More. Get More.

**TomSmithLandandHomes.com**

Information is believed to be accurate but not guaranteed.

# Soil Map



*Call me today!*

**TARA WALKER SMITH, REALTOR®**  
 Tara@TomSmithHomes.com  
 601.990.5070 office | 601.407.4315 cell



**TomSmithLandandHomes.com**

Information is believed to be accurate but not guaranteed.



# Flood Map



*Call me today!*

**TARA WALKER SMITH, REALTOR®**  
Tara@TomSmithHomes.com  
601.990.5070 office | 601.407.4315 cell

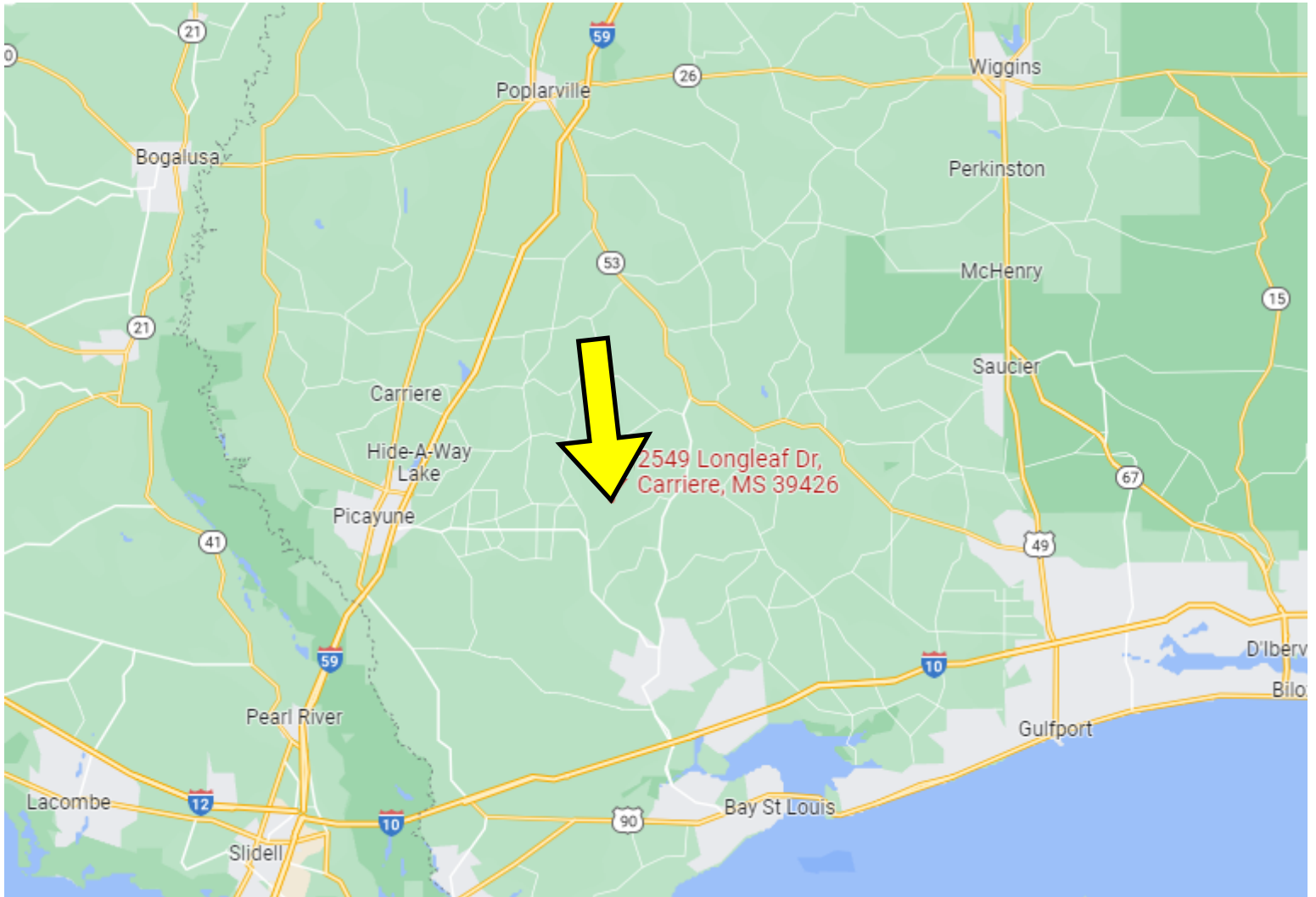


**TomSmithLandandHomes.com**

Information is believed to be accurate but not guaranteed.



# Directional Map



## GOOGLE MAP LINK

*Directions from the intersection of US-49 and Old Highway 49 in Perkinston, MS: Travel south on US-49S, in 9.6 miles, turn right onto Church Ave, in .6 miles, turn right onto 3rd St, in .2 miles, turn left onto Old Hwy 49, in .6 miles, turn right onto Saucier Lizana Rd, in 5.8 miles, turn right onto Herman Ladner Rd, in 4.1 miles, turn right onto MS-53N, in 8.9 miles, turn left onto MS-603S, in 1 mile, turn right onto Caesar Necaise Rd, in 4.0 miles, turn left onto Lake Cypress Dr, in 3.1 miles, turn left onto Longleaf Dr, the property will be on the left in .7 miles.*

Address: 2549 Longleaf Dr, Perkinston, MS 39573

*Call me today!*

**TARA WALKER SMITH, REALTOR®**  
Tara@TomSmithHomes.com  
601.990.5070 **office** | 601.407.4315 **cell**



Expect More. Get More.

**TomSmithLandandHomes.com**

Information is believed to be accurate but not guaranteed.