

3 BEDROOM/2 BATH HOME IN JONES COUNTY, MS



3903 Sharon Rd, Laurel, MS 39443

\$215,000

This three bedroom, two bath, 1,404-sqft home has been recently remodeled with all new kitchen cabinets, granite counter-tops, new appliances, new bathroom fixtures, bathroom counter-tops and much more! In addition to this wonderfully remodeled home, there is a one bedroom guest house that; could be an income producing property or mother-in-law suite with a little TLC. The 1± acre lot features a workshop, and the fully fenced backyard features majestic live oaks and other beautiful shade trees and landscaping. The property is conveniently located near downtown Laurel, MS, in Jones County.

Directions from the intersection of I-59 and US-84 in Laurel, MS: Travel north on I-59N, in 1.6 miles, take Exit 99 for US-11, in .3 miles, keep left at the fork, follow signs for Laurel, in 276 feet, turn left onto US-11S, in 1 mile, turn right onto E 24th St, in .7 miles, turn right onto MS-537/Sharon Rd, in 3.3 miles, the property will be on the right.

Address: 3903 Sharon Rd, Laurel, MS 39433



Call me today!

TARA WALKER SMITH, REALTOR®
Tara@TomSmithHomes.com
601.990.5070 office | 601.407.4315 cell



TomSmithLandandHomes.com

Information is believed to be accurate but not guaranteed.



Call me today!

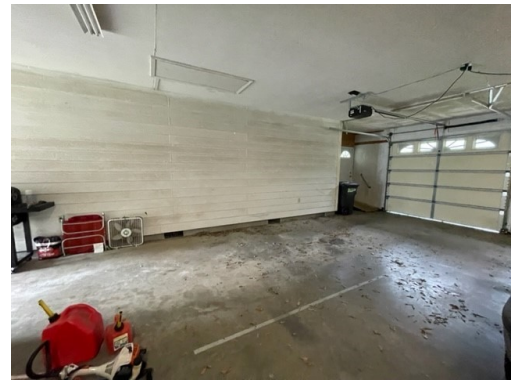
TARA WALKER SMITH, REALTOR®
Tara@TomSmithHomes.com
601.990.5070 office | 601.407.4315 cell



Expect More. Get More.

TomSmithLandandHomes.com

Information is believed to be accurate but not guaranteed.



Call me today!

TARA WALKER SMITH, REALTOR®
Tara@TomSmithHomes.com
601.990.5070 office | 601.407.4315 cell



Expect More. Get More.

TomSmithLandandHomes.com

Information is believed to be accurate but not guaranteed.



Call me today!

TARA WALKER SMITH, REALTOR®
Tara@TomSmithHomes.com
601.990.5070 office | 601.407.4315 cell



Expect More. Get More.

TomSmithLandandHomes.com

Information is believed to be accurate but not guaranteed.

Aerial Map



INTERACTIVE MAP

Call me today!

TARA WALKER SMITH, REALTOR®
Tara@TomSmithHomes.com
601.990.5070 **office** | 601.407.4315 **cell**

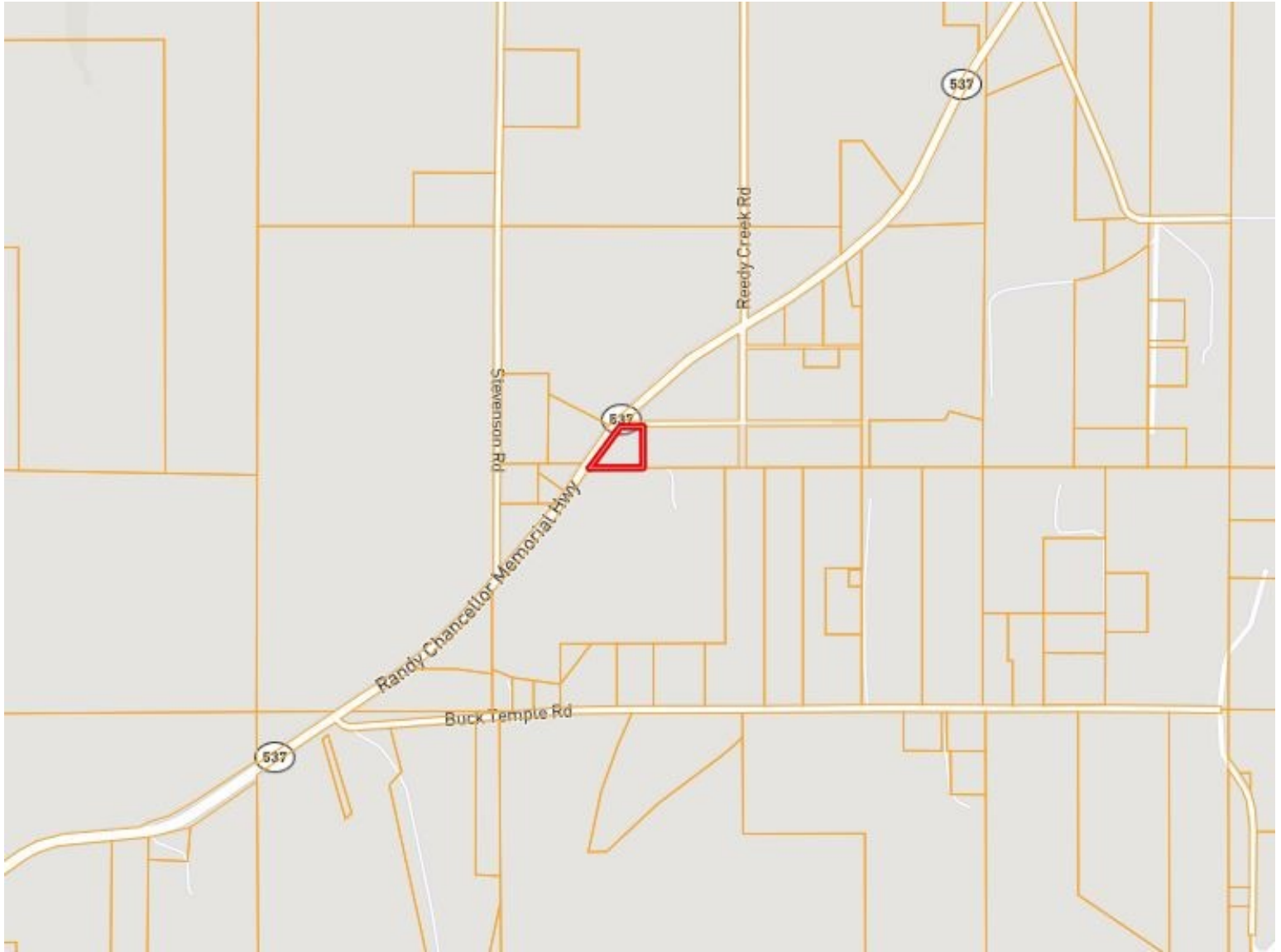


Expect More. Get More.

TomSmithLandandHomes.com

Information is believed to be accurate but not guaranteed.

Ownership Map



Call me today!

TARA WALKER SMITH, REALTOR®
Tara@TomSmithHomes.com
601.990.5070 **office** | 601.407.4315 **cell**

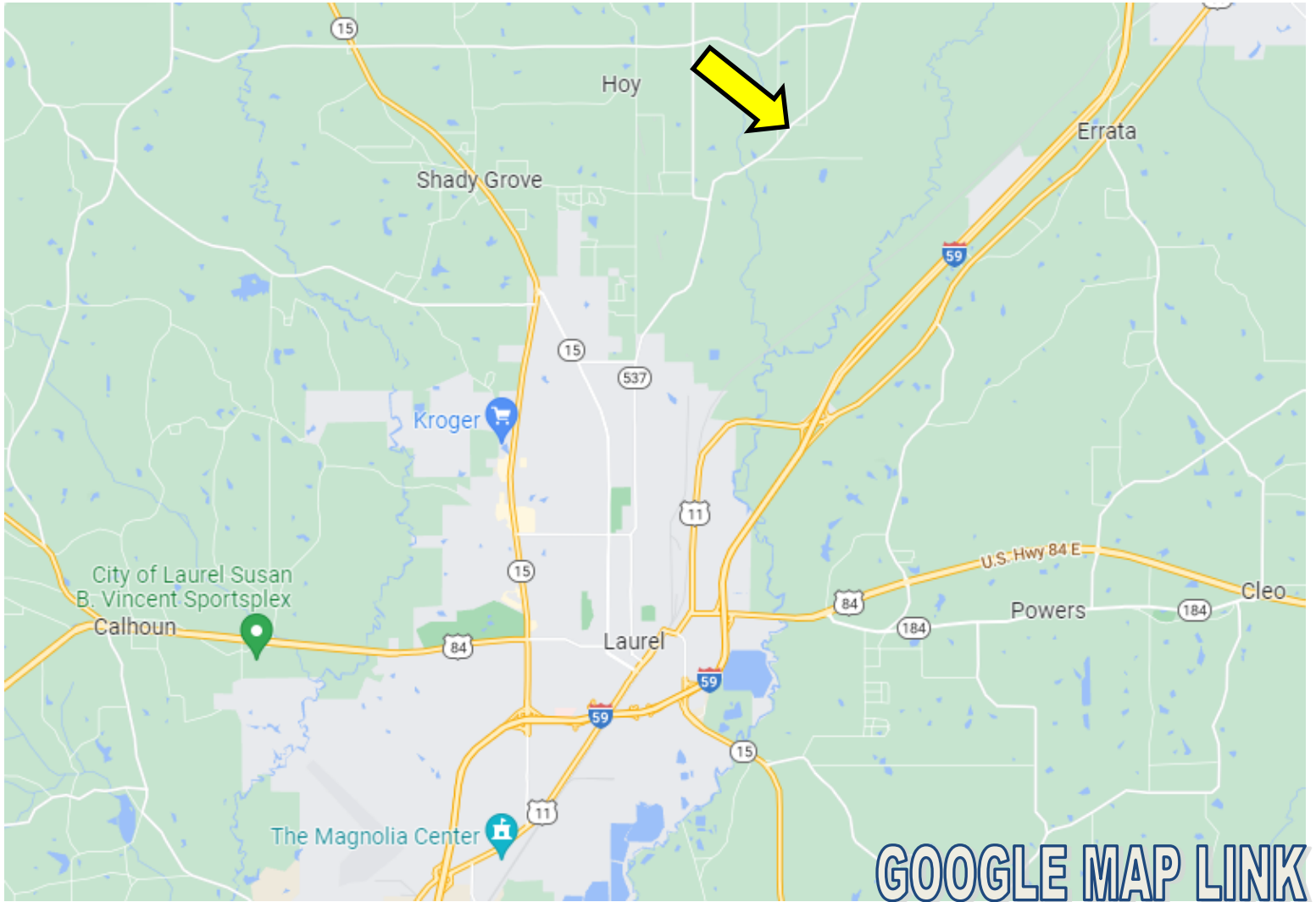


Expect More. Get More.

TomSmithLandandHomes.com

Information is believed to be accurate but not guaranteed.

Directional Map



Directions from the intersection of I-59 and US-84 in Laurel, MS: Travel north on I-59N, in 1.6 miles, take Exit 99 for US-11, in .3 miles, keep left at the fork, follow signs for Laurel, in 276 feet, turn left onto US-11S, in 1 mile, turn right onto E 24th St, in .7 miles, turn right onto MS-537/Sharon Rd, in 3.3 miles, the property will be on the right.

Address: 3903 Sharon Rd, Laurel, MS 39433

Call me today!

TARA WALKER SMITH, REALTOR®
Tara@TomSmithHomes.com
601.990.5070 **office** | 601.407.4315 **cell**



Expect More. Get More.

TomSmithLandandHomes.com

Information is believed to be accurate but not guaranteed.