

209+/- Acres in Madison County, MS



Price Reduced!



Agent/Owner

\$529,500

Directions: From Jackson, follow I-55N to MS 16. Take Exit 124. After merging onto 16E, turn left on Davis Crossing Road. After 3.7 miles, turn left on Hwy 51. Drive 11 miles, and turn right on MS-17S. Drive approximately 4 miles and the property will be on your right.



Call me today!

Steve Martens, Land Realtor®

Steve@TomSmithLand.com

(601) 573 - 2962 cell | (601) 898 - 2772 office

112 Village Blvd. | Madison, MS 39110



www.TomSmithLandandHomes.com

Are you looking to benefit from a previous land owner's careful planning and strategic land management? Now is your chance! This 209+/- acres in Pickens, MS has been meticulously maintained with road systems and food plots in place. With road frontage, available utilities, potential lake sites, and multiple cabin sites, this property is ready for you to build your dream home or hunter's haven. There is great investment potential with approximately 25 acres of 25 year pines, 10 acres of mixed hardwoods, 10 acres of large food plots and roads, and the balance in 15-16 year old pines that have never been thinned. Deer and turkey abound in the varied topography of this exceptional property. Additional acreage is available. Contact me today.



\$529,500

Agent/Owner



Call me today!

Steve Martens, Land Realtor®
Steve@TomSmithLand.com
(601) 573 - 2962 cell | (601) 898 - 2772 office
112 Village Blvd. | Madison, MS 39110



www.TomSmithLandandHomes.com



209 +/- Acres



Call me today!

Steve Martens , Land Realtor®
Steve@TomSmithLand.com
(601) 573 - 2962 cell | (601) 898 - 2772 office
112 Village Blvd. | Madison, MS 39110



www.TomSmithLandandHomes.com

Trail Cam Pics



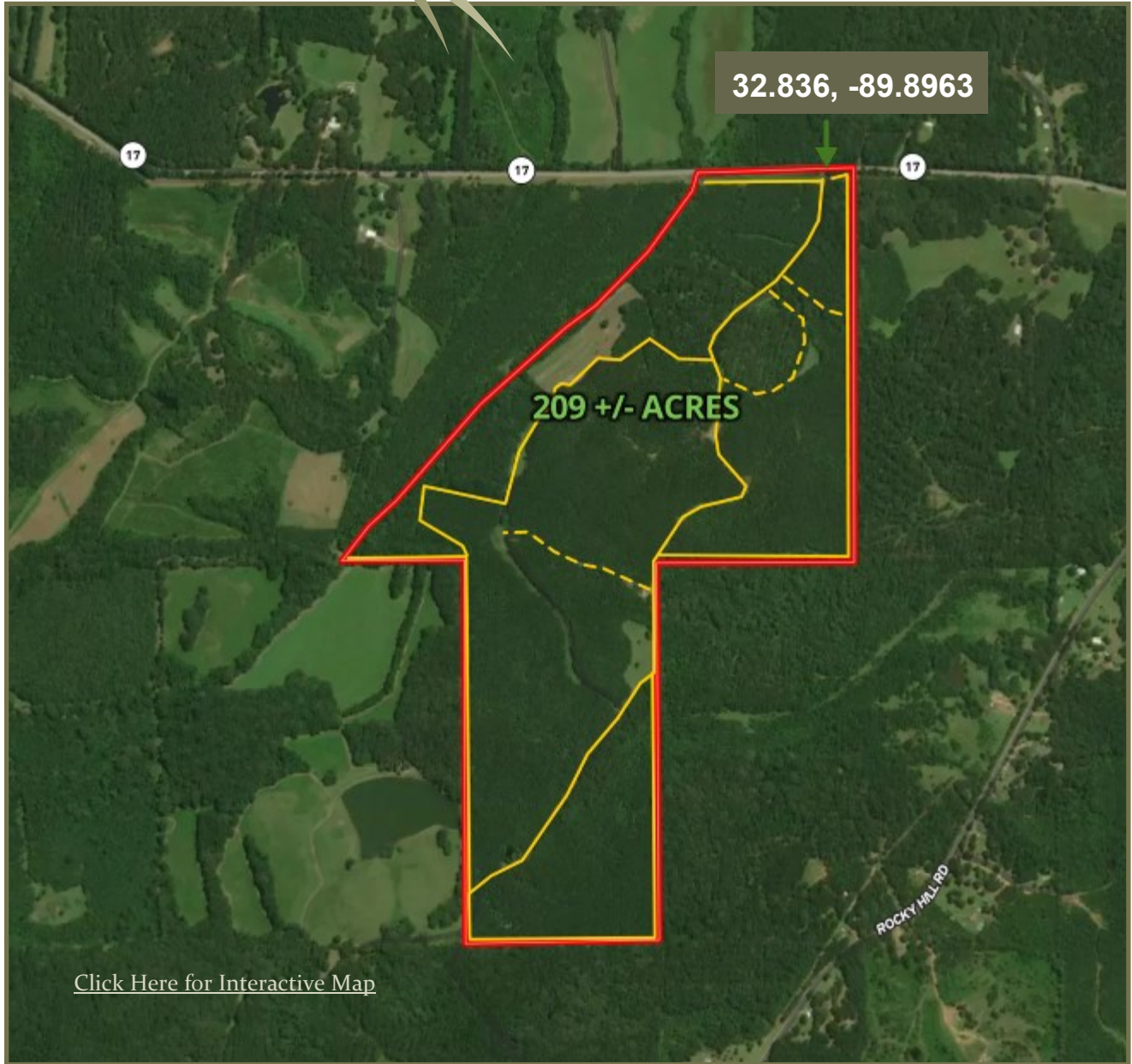
Call me today!

Steve Martens, Land Realtor®
 Steve@TomSmithLand.com
 (601) 573 - 2962 cell | (601) 898 - 2772 office
 112 Village Blvd. | Madison, MS 39110



www.TomSmithLandandHomes.com

Aerial Map



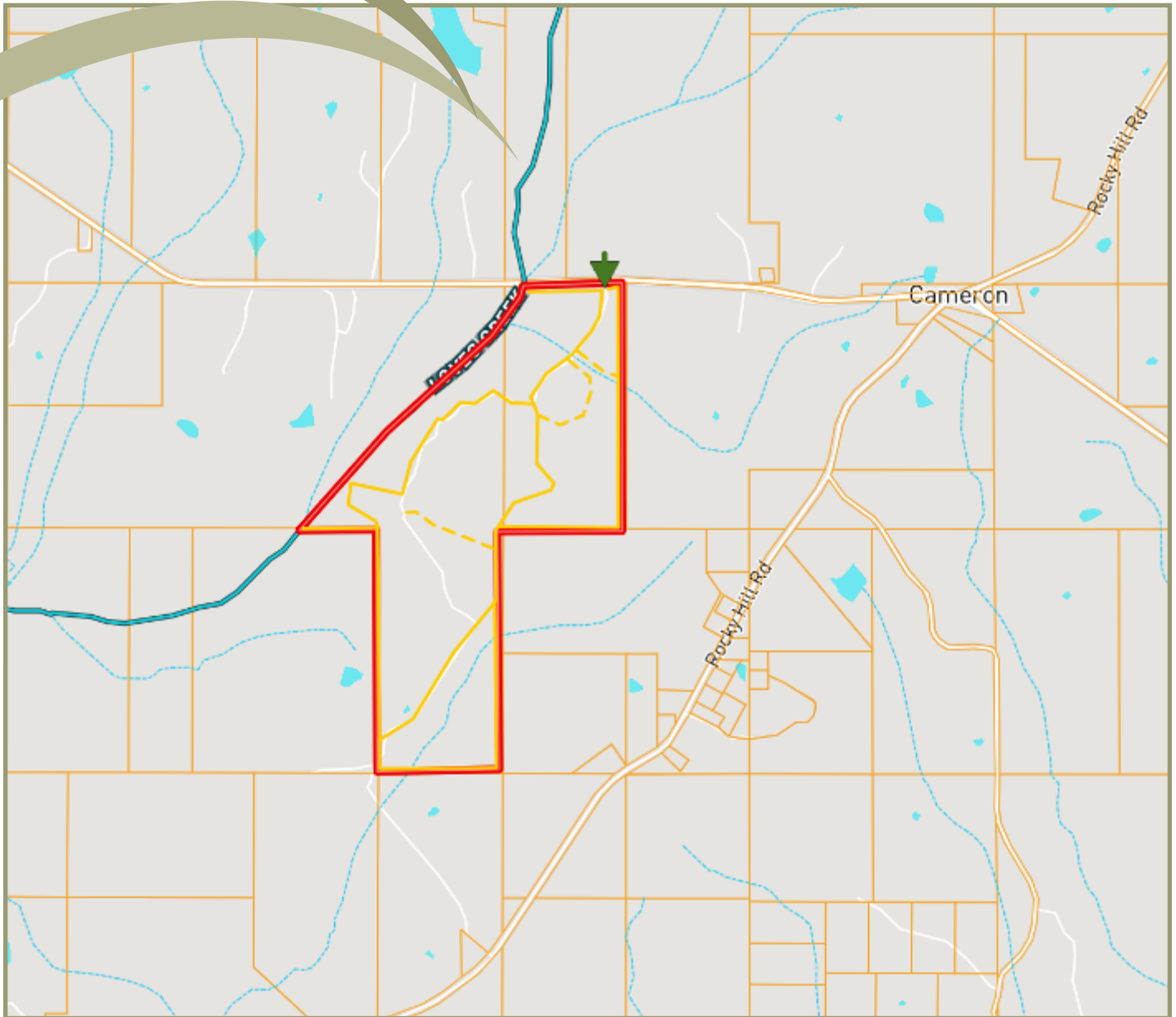
Call me today!

Steve Martens, Land Realtor®
Steve@TomSmithLand.com
(601) 573 - 2962 cell | (601) 898 - 2772 office
112 Village Blvd. | Madison, MS 39110



www.TomSmithLandandHomes.com

Ownership Map



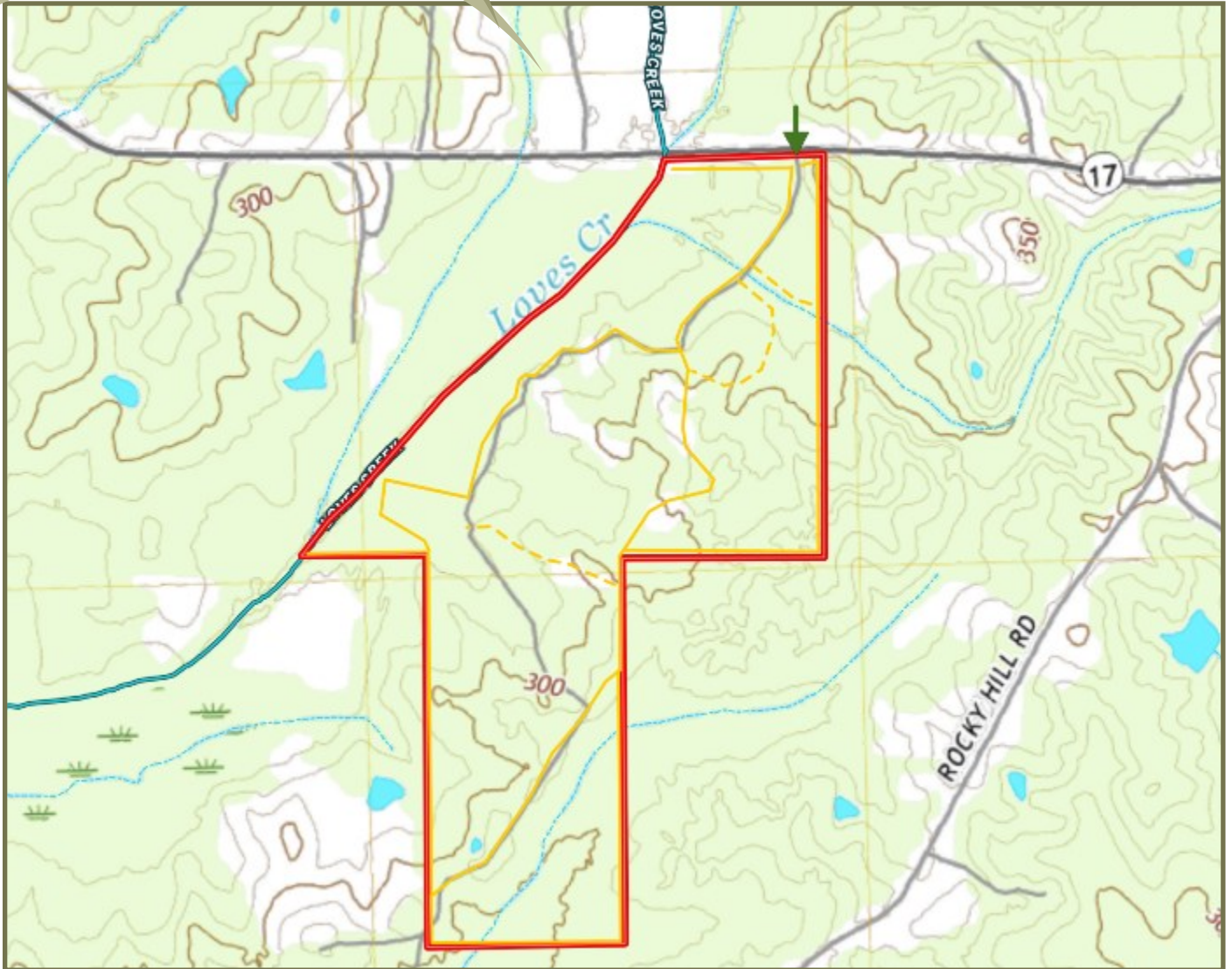
Call me today!

Steve Martens, Land Realtor®
Steve@TomSmithLand.com
(601) 573 - 2962 cell | (601) 898 - 2772 office
112 Village Blvd. | Madison, MS 39110



www.TomSmithLandandHomes.com

Topo Map



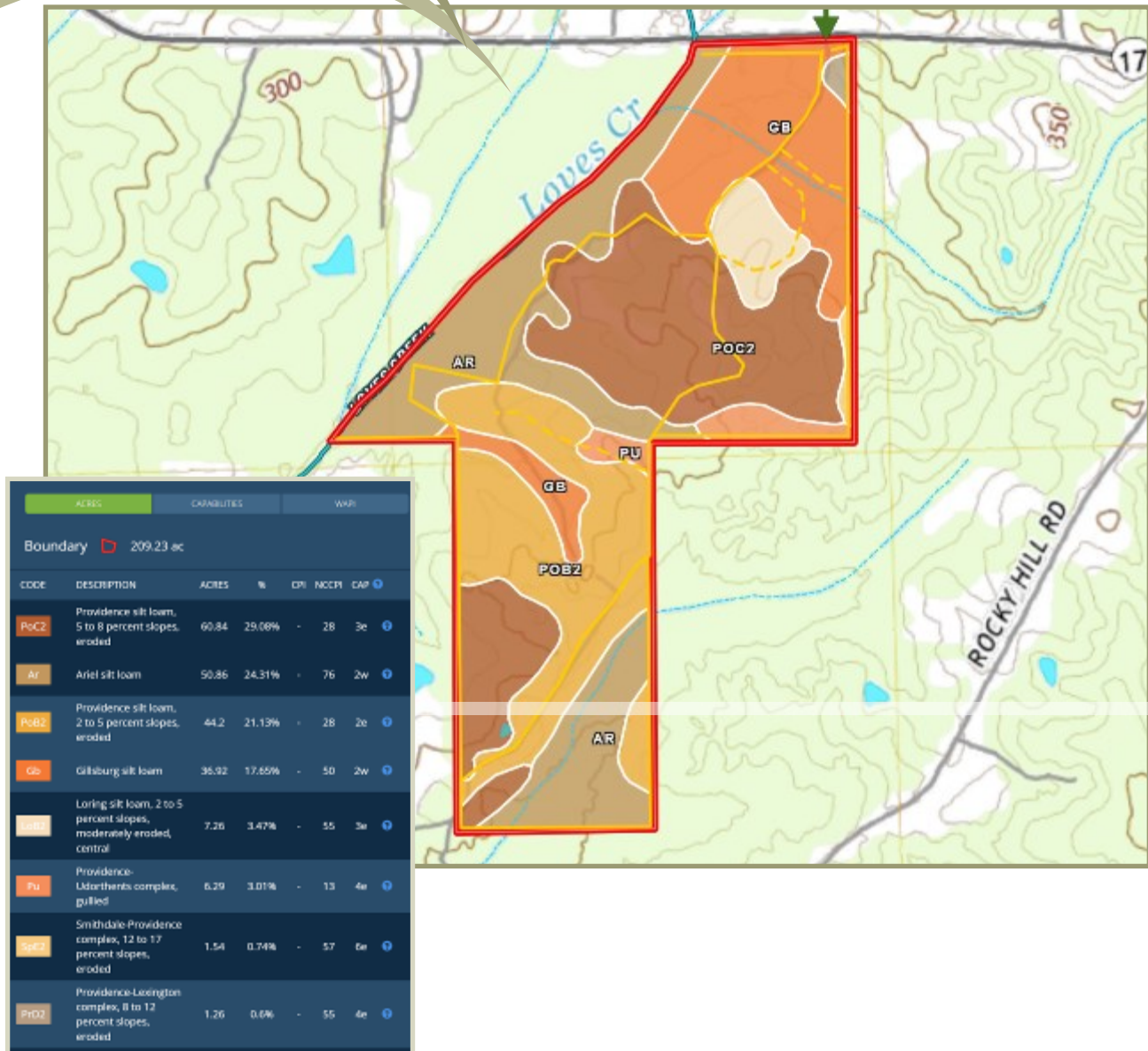
Call me today!

Steve Martens, Land Realtor®
Steve@TomSmithLand.com
(601) 573 - 2962 cell | (601) 898 - 2772 office
112 Village Blvd. | Madison, MS 39110



www.TomSmithLandandHomes.com

Soil Map



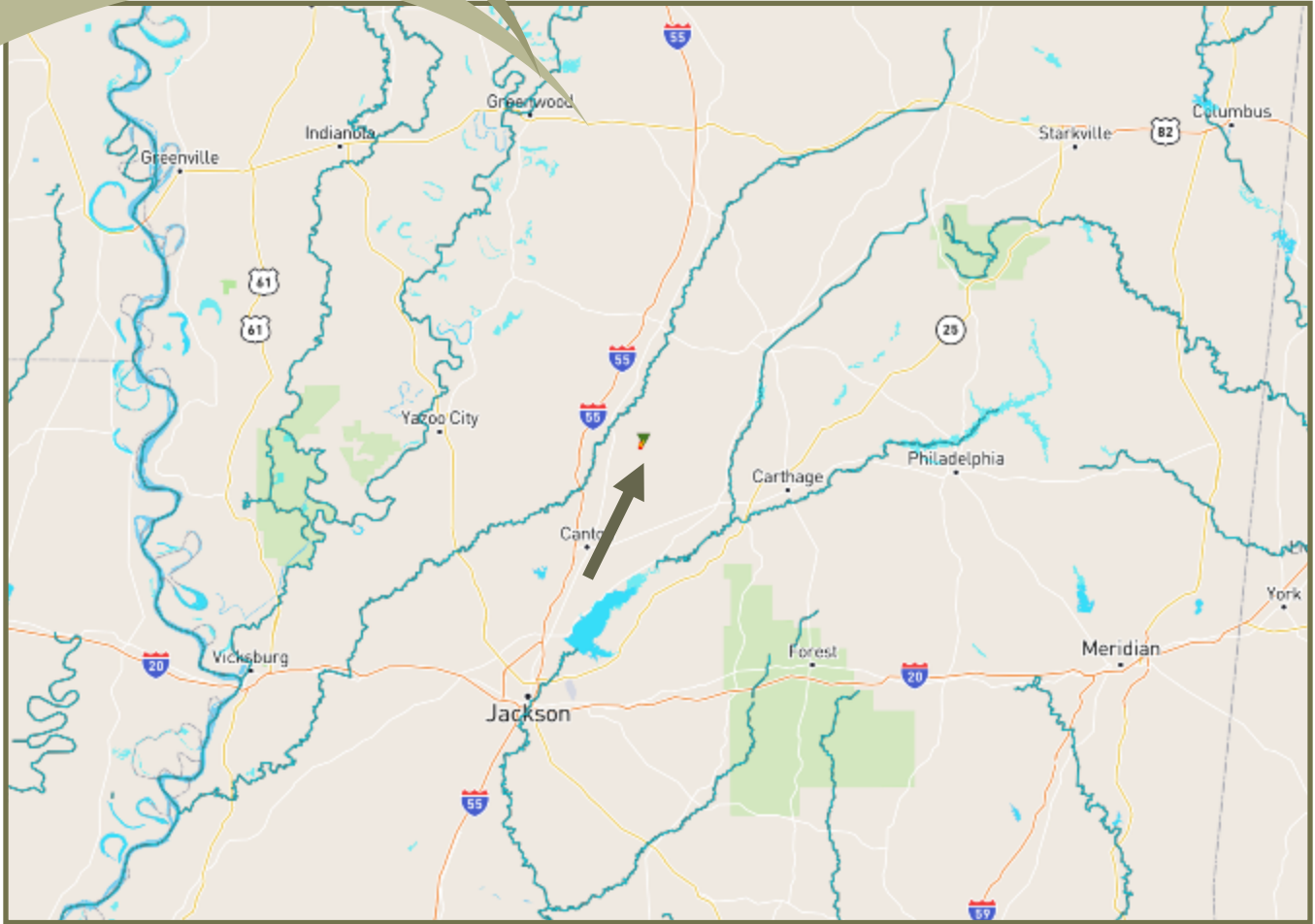
Call me today!

Steve Martens, Land Realtor®
Steve@TomSmithLand.com
(601) 573 - 2962 cell | (601) 898 - 2772 office
112 Village Blvd. | Madison, MS 39110



www.TomSmithLandandHomes.com

Directional Map



Directions: From Jackson, follow I-55N to MS 16. Take Exit 124. After merging onto 16E, turn left on Davis Crossing Road. After 3.7 miles, turn left on Hwy 51. Drive 11 miles, and turn right on MS-17S. Drive approximately 4 miles, and the property will be on your right.



Call me today!

Steve Martens , Land Realtor®
Steve@TomSmithLand.com
(601) 573 - 2962 cell | (601) 898 - 2772 office
112 Village Blvd. | Madison, MS 39110



www.TomSmithLandandHomes.com

