

Beautiful 5 Bedroom Cottage in Cleveland Bolivar County, MS



204 South Victoria Avenue, Cleveland, MS

\$159,500

This five bedroom, two bath home was built in 1946 in Bolivar, County. You will find a cozy den with a gas fireplace and gorgeous wood floors. The home features a den that is open to the dining room, and there is a nice enclosed sunporch. There are two bedrooms and one bath downstairs and three bedrooms and one bath upstairs. There are two separate carports and an amazing front porch. The kitchen has a new stainless steel gas range and dishwasher. Call today for your private showing!

Directions from the intersection of Hwy 8 and Hwy 61 Cleveland, MS: Travel West on Hwy 8 for 0.7 miles. Turn left onto N. Victoria Ave. In 0.3 miles, the destination is on the right.



Call me today!

TRACEY BELL, MANAGING BROKER
Tracey@TomSmithLand.com
662.441.2500 **office** | 662.719.4720 **cell**



Expect More. Get More.

TomSmithLandandHomes.com

Information is believed to be accurate but not guaranteed.



Call me today!

TRACEY BELL, MANAGING BROKER
Tracey@TomSmithLand.com
662.441.2500 **office** | 662.719.4720 **cell**



TomSmithLandandHomes.com

Information is believed to be accurate but not guaranteed.



Call me today!

TRACEY BELL, MANAGING BROKER
Tracey@TomSmithLand.com
662.441.2500 **office** | 662.719.4720 **cell**



TomSmithLandandHomes.com

Information is believed to be accurate but not guaranteed.



Call me today!

TRACEY BELL, MANAGING BROKER
Tracey@TomSmithLand.com
662.441.2500 **office** | 662.719.4720 **cell**



TomSmithLandandHomes.com

Information is believed to be accurate but not guaranteed.

AERIAL MAP



[CLICK FOR INTERACTIVE MAP](#)

Call me today!

TRACEY BELL, MANAGING BROKER
Tracey@TomSmithLand.com
662.441.2500 **office** | 662.719.4720 **cell**

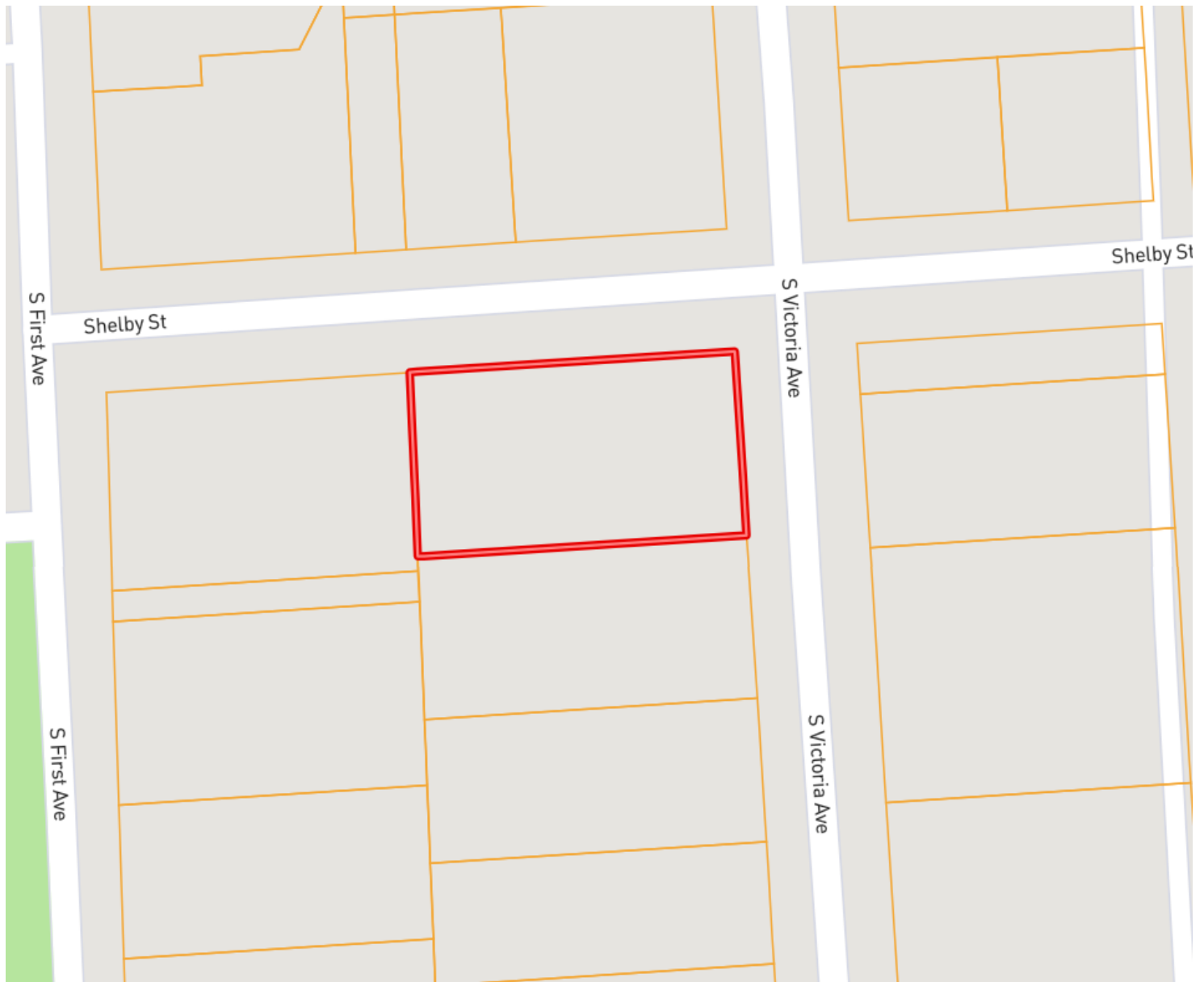


Expect More. Get More.

TomSmithLandandHomes.com

Information is believed to be accurate but not guaranteed.

OWNERSHIP MAP



Call me today!

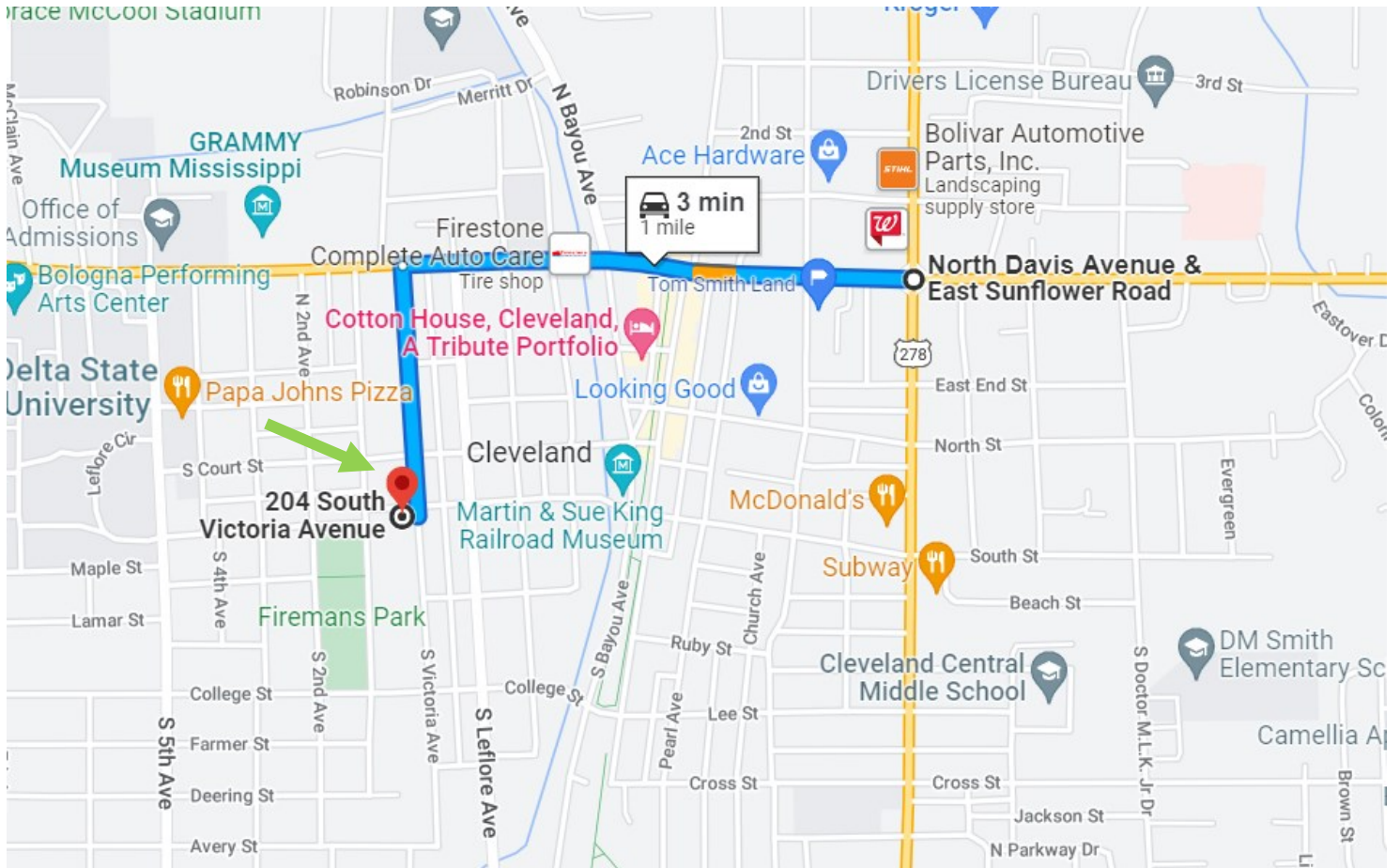
TRACEY BELL, MANAGING BROKER
Tracey@TomSmithLand.com
662.441.2500 **office** | 662.719.4720 **cell**



TomSmithLandandHomes.com

Information is believed to be accurate but not guaranteed.

DIRECTIONAL MAP



204 S. Victoria Ave. Cleveland, MS 38732

Directions from the intersection of Hwy 8 and Hwy 61 Cleveland, MS: Travel West on Hwy 8 for 0.7 miles. Turn left onto N. Victoria Ave, in 0.3 miles the destination is on the right.

Call me today!

TRACEY BELL, MANAGING BROKER
Tracey@TomSmithLand.com
662.441.2500 **office** | 662.719.4720 **cell**



Expect More. Get More.

TomSmithLandandHomes.com

Information is believed to be accurate but not guaranteed.