

37+/- Acre Recreational Tract

Choctaw County, MS



\$99,750

This nice 37+/- acre tract in Choctaw County, MS, is located approximately 6 miles south of Mathiston. This tract features mixed ages of mostly pine timber with internal trails. There is potential for a cabin or homesite. Utilities are located on paved Hester Road, where the entrance to the property is. There is a transmission line traversing across the southwest corner of the property. These features make for a very nice hunting and recreational tract. Don't wait; call today to view this property.

Directions: From the intersection of Hwy 15 and Hwy 82 in Mathiston travel south 5.7 miles on Hwy 15. Turn right onto Hester Road, travel 1.4 miles, and the property will be on the left.

[Google Maps Link](#)



Call me today!

MICHAEL COOPER, REALTOR®
Mcooper@TomSmithLand.com
662.268.6333 office | 662.285.8686 cell



TomSmithLandandHomes.com

Information is believed to be accurate but not guaranteed.



Call me today!

MICHAEL COOPER, REALTOR®

Mcooper@TomSmithLand.com

662.268.6333 office | 662.285.8686 cell



Expect More. Get More.

TomSmithLandandHomes.com

Information is believed to be accurate but not guaranteed.



Call me today!

MICHAEL COOPER, REALTOR®

Mcooper@TomSmithLand.com

662.268.6333 **office** | 662.285.8686 **cell**

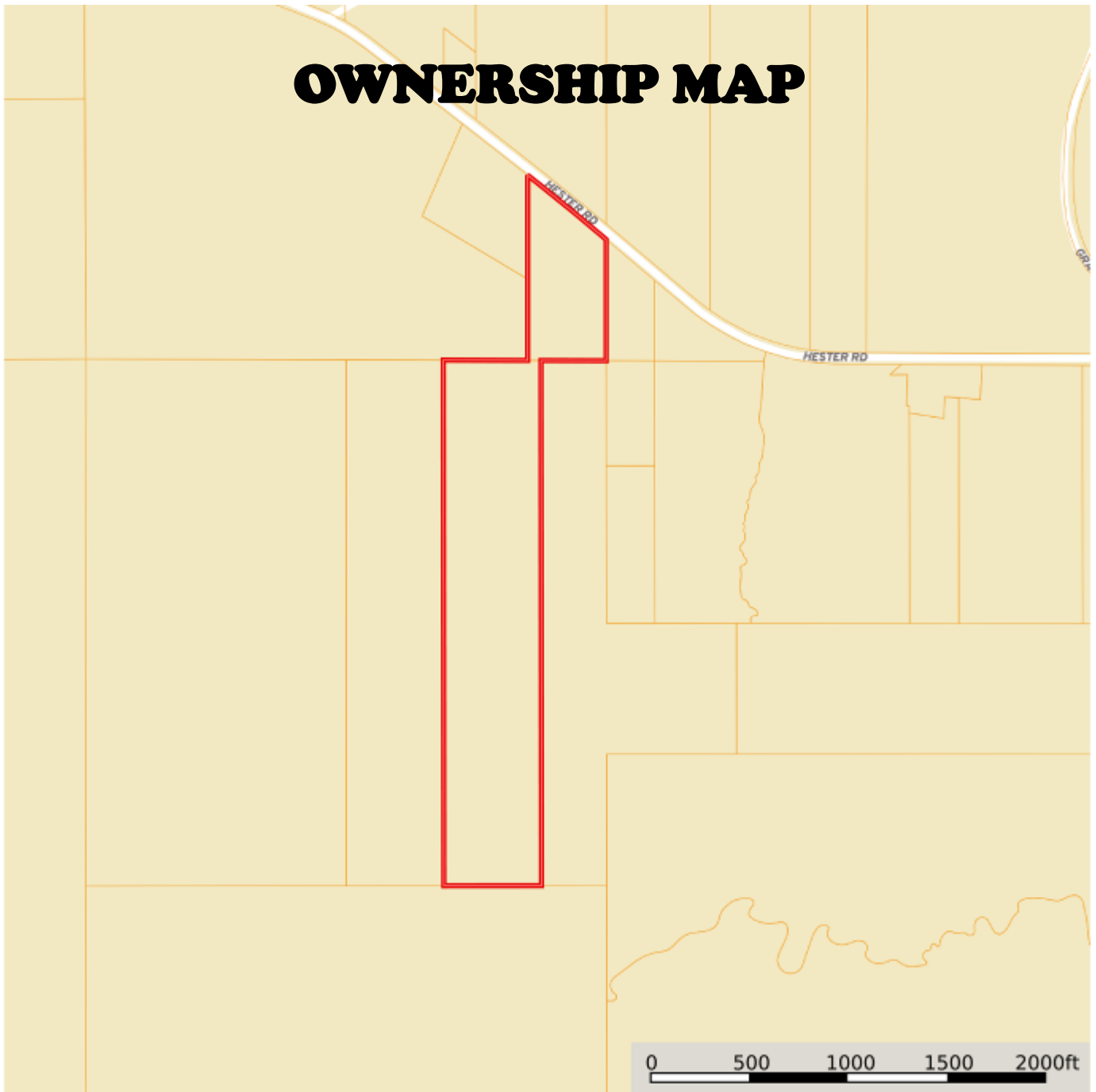


Expect More. Get More.

TomSmithLandandHomes.com

Information is believed to be accurate but not guaranteed.

OWNERSHIP MAP



Call me today!

MICHAEL COOPER, REALTOR®
Mcooper@TomSmithLand.com
662.268.6333 office | 662.285.8686 cell



TomSmithLandandHomes.com

Information is believed to be accurate but not guaranteed.

AERIAL MAP

33.4626
-89.1679

Interactive Map

37+/-
ACRES

mapbox

0 500 1000 1500 2000

Call me today!

MICHAEL COOPER, REALTOR®

Mcooper@TomSmithLand.com

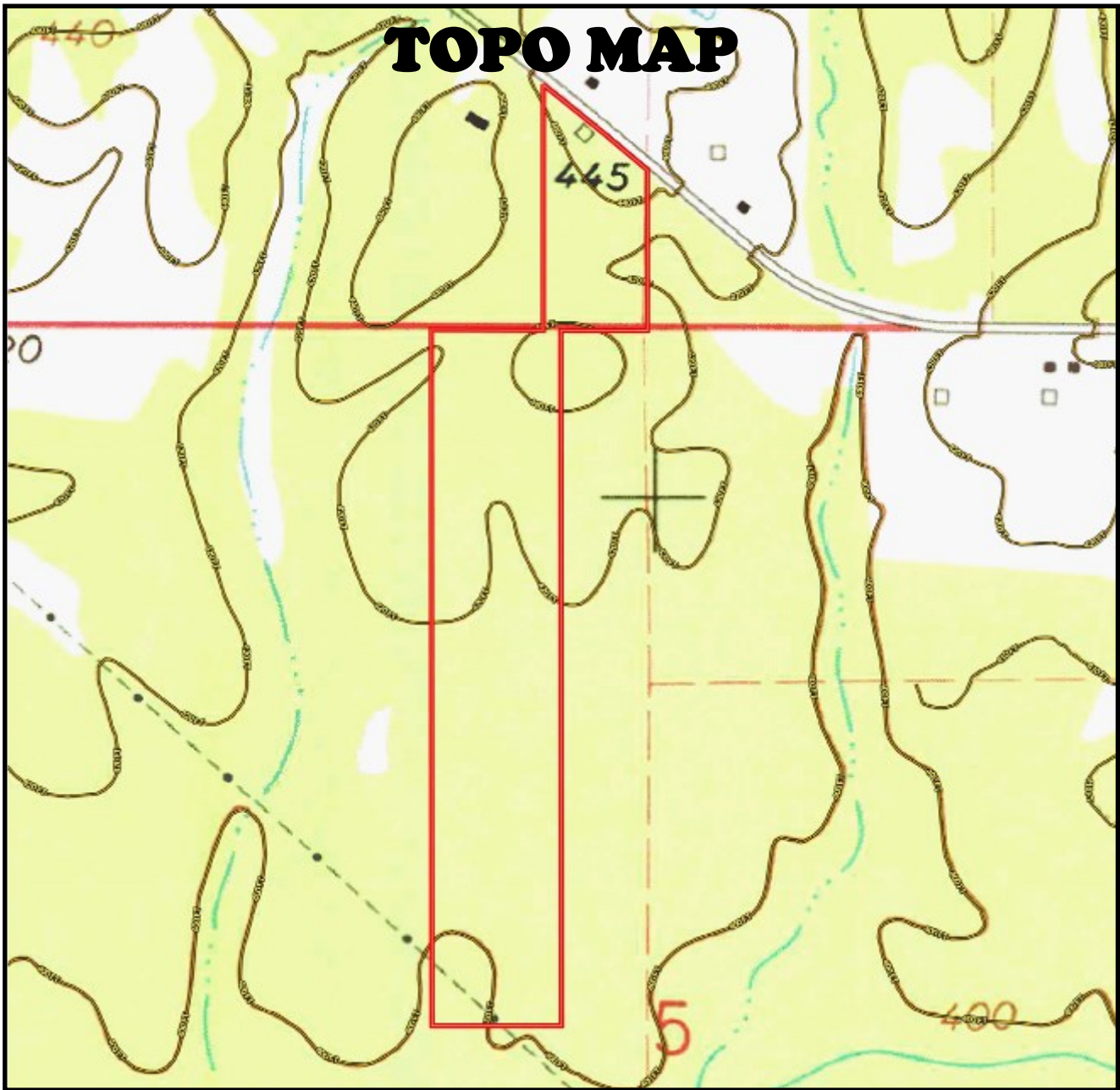
662.268.6333 office | 662.285.8686 cell



Expect More. Get More.

TomSmithLandandHomes.com

Information is believed to be accurate but not guaranteed.



Call me today!

MICHAEL COOPER, REALTOR®
 Mcooper@TomSmithLand.com
 662.268.6333 office | 662.285.8686 cell



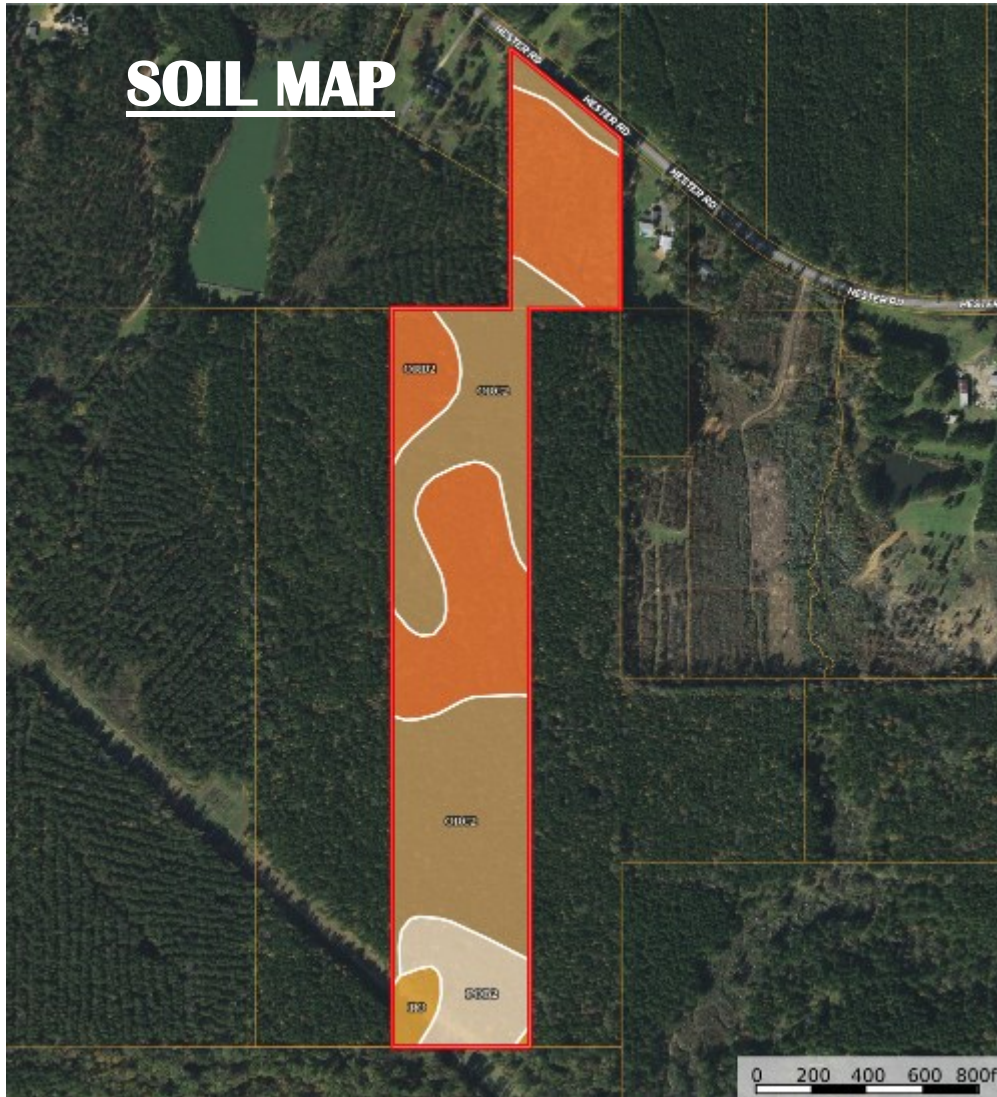
Expect More. Get More.



TomSmithLandandHomes.com

Information is believed to be accurate but not guaranteed.

SOIL MAP



SOIL CODE	SOIL DESCRIPTION	ACRES	%	CPI	NCCPI	CAP
OrC2	Ora loam, 5 to 8 percent slopes, eroded	17.71	47.4	0	32	3e
OrD2	Ora loam, 8 to 12 percent slopes, eroded	15.07	40.34	0	37	4e
PoB2	Providence silt loam, 2 to 5 percent slopes, moderately eroded	3.59	9.61	0	34	2e
Ro	Rosebloom silt loam, occasionally flooded	0.99	2.65	0	77	3w
TOTALS		37.36()	100%	-	35.4	3.31

Call me today!

MICHAEL COOPER, REALTOR®
 Mcooper@TomSmithLand.com
 662.268.6333 office | 662.285.8686 cell



Expect More. Get More.



TomSmithLandandHomes.com

Information is believed to be accurate but not guaranteed.

DIRECTIONAL MAP



Directional: From the intersection of Hwy 15 and Hwy 82 in Mathiston travel south 5.7 miles on Hwy 15. Turn right onto Hester Road, travel 1.4 miles, and the property will be on the left.

[Google Maps Link](#)

Call me today!

MICHAEL COOPER, REALTOR®
Mcooper@TomSmithLand.com
662.268.6333 **office** | 662.285.8686 **cell**



TomSmithLandandHomes.com

Information is believed to be accurate but not guaranteed.