

Beautiful Home in Cleveland

Bolivar County, MS



1715 College Street, Cleveland, MS 38732

This beautiful, 1,571+/- sq. ft. house located in Bolivar, Co. has three bedrooms and three baths, a laundry room located off the carport and a fireplace. It is perfectly located, just walking distance from Bear Pen Park. The park has tennis courts, baseball fields, fishing pond and a walking track. The house also has a large fenced in backyard with a back patio. Call Anthony for a private showing!

Directions from the intersection of Hwy 8 & 61 in Cleveland, MS: Travel West onto Hwy 8 towards North Chrisman Ave. in 1.7 miles, turn left onto Bishop Rd. Travel 0.7 miles and turn right onto College St. and in 0.5 miles the destination is on the left.



Call me today!

ANTHONY STEEN, REALTOR®
Anthony@TomSmithLand.com
662.441.2500 office | 662.645.5151 cell



TomSmithLandandHomes.com

Information is believed to be accurate but not guaranteed.



Call me today!

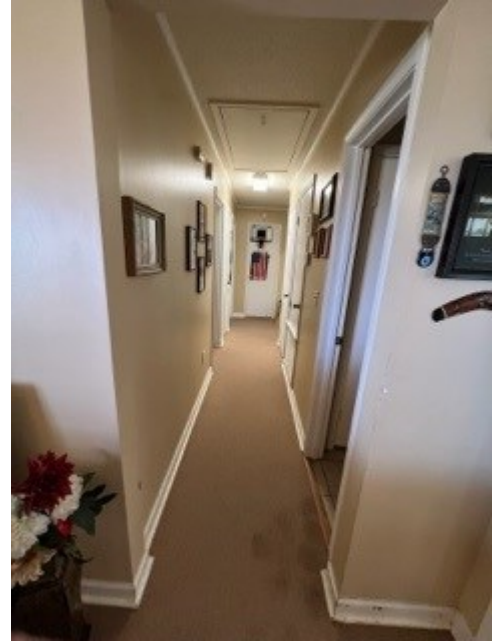
ANTHONY STEEN, REALTOR®
Anthony@TomSmithLand.com
662.441.2500 **office** | 662.645.5151 **cell**



Expect More. Get More.

TomSmithLandandHomes.com

Information is believed to be accurate but not guaranteed.



Call me today!

ANTHONY STEEN, REALTOR®
Anthony@TomSmithLand.com
662.441.2500 **office** | 662.645.5151 **cell**

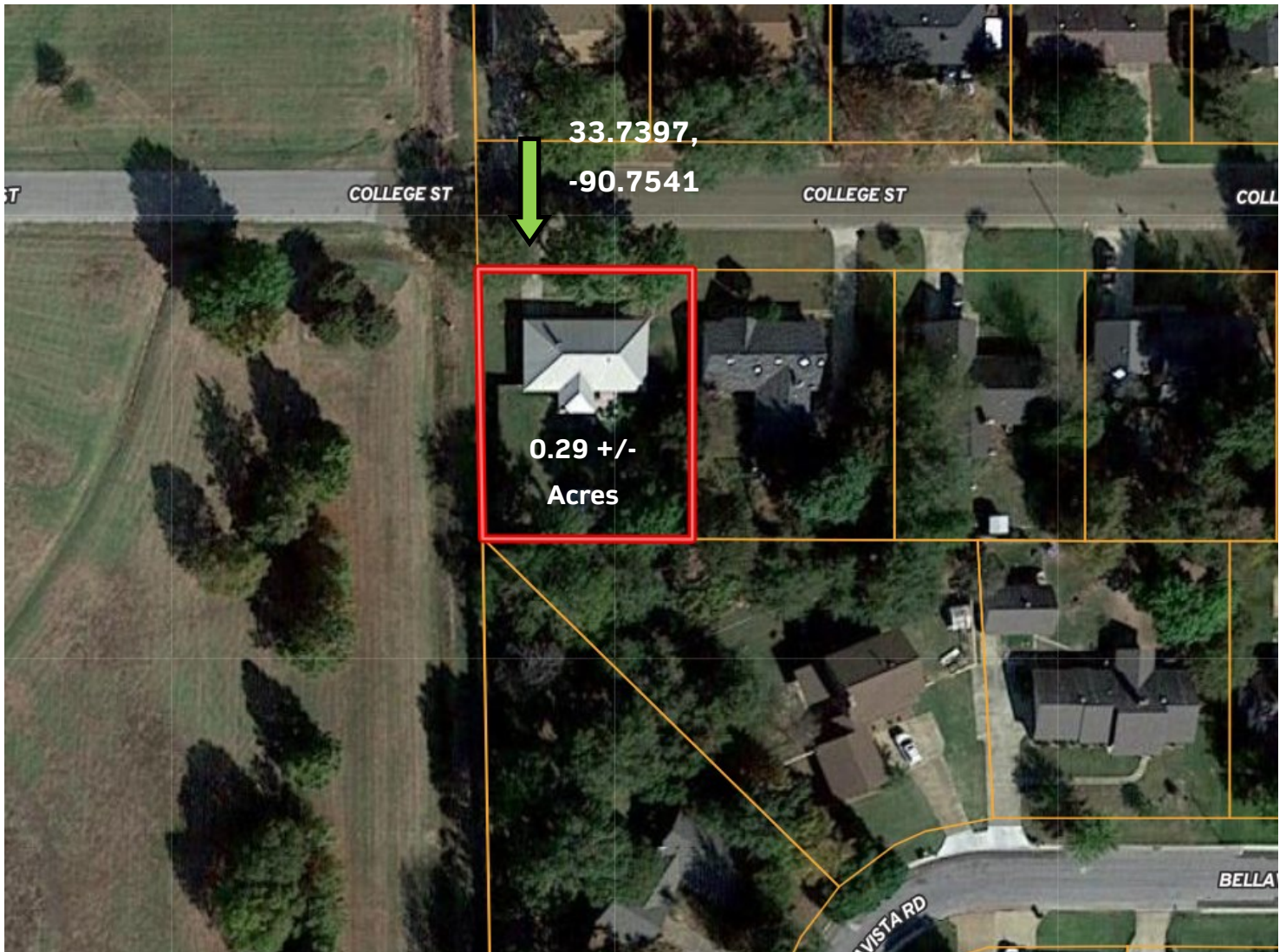


Expect More. Get More.

TomSmithLandandHomes.com

Information is believed to be accurate but not guaranteed.

AERIAL MAP



[Click for Interactive Map](#)

Call me today!

ANTHONY STEEN, REALTOR®
Anthony@TomSmithLand.com
662.441.2500 **office** | 662.645.5151 **cell**



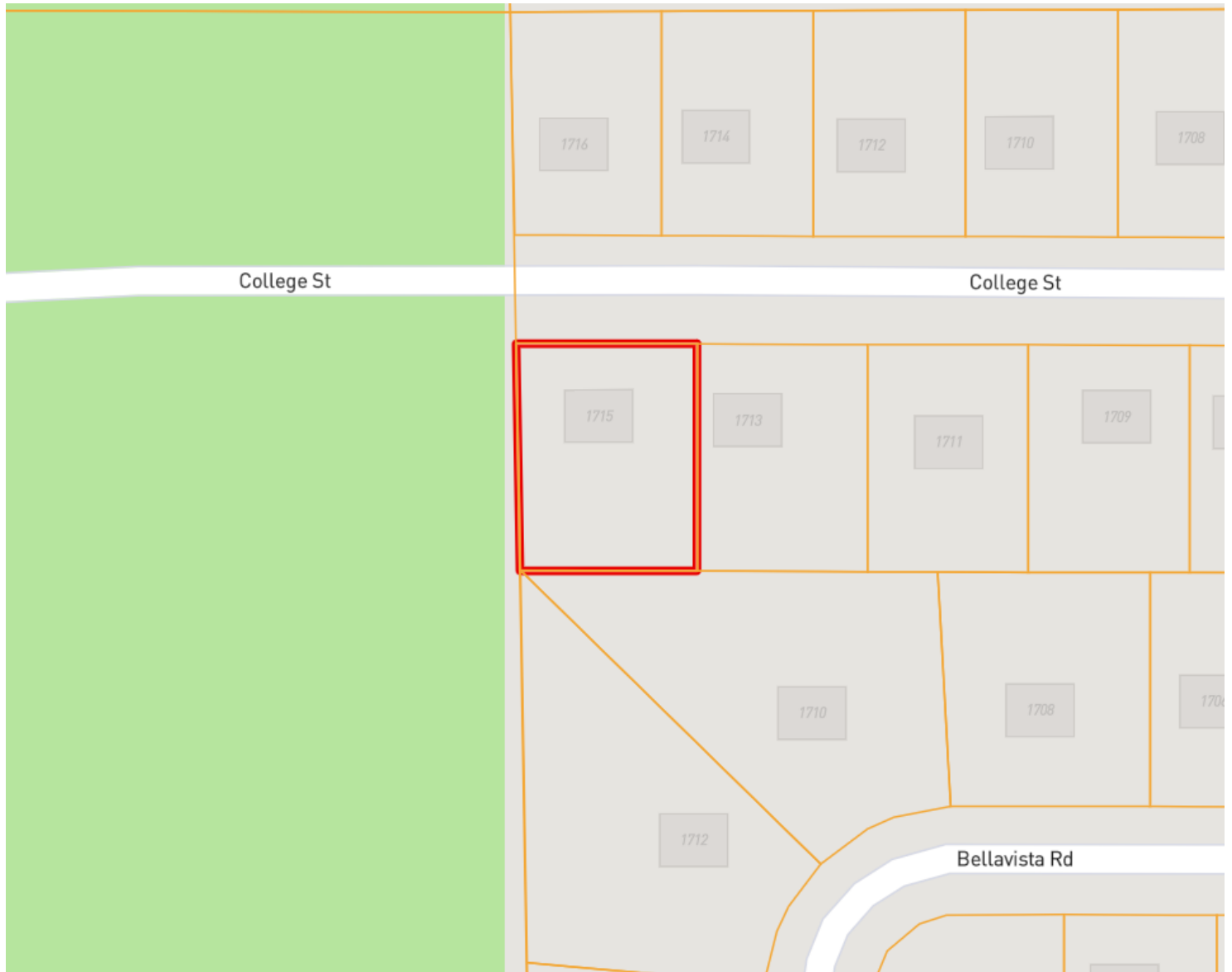
Expect More. Get More.



TomSmithLandandHomes.com

Information is believed to be accurate but not guaranteed.

OWNERSHIP MAP



Call me today!

ANTHONY STEEN, REALTOR®
Anthony@TomSmithLand.com
662.441.2500 office | 662.645.5151 cell

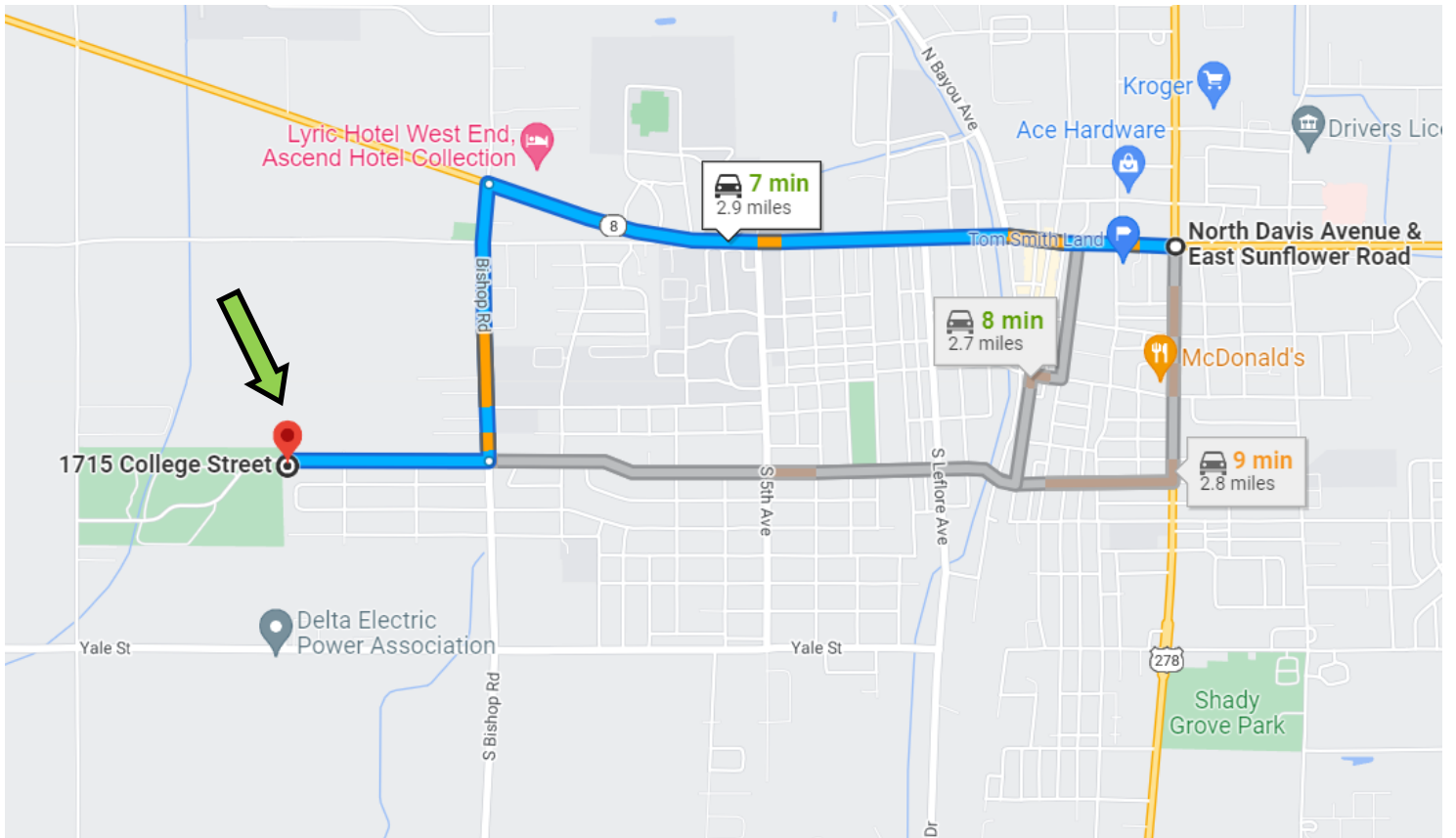


Expect More. Get More.

TomSmithLandandHomes.com

Information is believed to be accurate but not guaranteed.

DIRECTIONAL MAP



Address: 1715 College Street Cleveland, MS 38732

Directions from the intersection of Hwy 8 & 61 in Cleveland, MS: Travel West onto Hwy 8 towards North Chrisman Ave. in 1.7 miles, turn left onto Bishop Rd. Travel 0.7 miles and turn right onto College St. and in 0.5 miles the destination is on the left. [Click for Google Map.](#)

Call me today!

ANTHONY STEEN, REALTOR®
Anthony@TomSmithLand.com
662.441.2500 **office** | 662.645.5151 **cell**



Expect More. Get More.

TomSmithLandandHomes.com

Information is believed to be accurate but not guaranteed.