

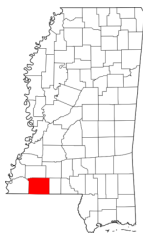
Charming Home on 0.62+/- Acres Amite County, MS



**510 Union Street
Gloster, MS 39638**

\$69,000

This historic home situated on 0.62+/- acres in Amite County, MS, has tons of charm. With the work done by the most recent owners, this house is move-in-ready and will make a fine home for its next owners. Built in the 1880's, the home offers gorgeous hardwood floors, and the wide hallways can't help but remind you of yesteryear. The 1,800+/- square foot home features three bedrooms, and two bathrooms, and the modern amenities such as the updated kitchen and the central heat and air allow for the comfort you might desire. The spacious yard provides room for relaxing and entertaining. Located on Union Street and E Tate Street in downtown Gloster, this home is up for grabs! Call Eli today to schedule a tour of this piece of history.



Directions from the intersection of Hwy 33 W/Union Street in Gloster, MS: Turn onto Union Street. Travel 0.3 miles and the home will be on your left.

Address: 510 Union Street Gloster, MS 39638



Call me today!

ELI FERGUSON, REALTOR®
Eli@TomSmithLand.com
601.990.5070 **office** | 601.757.7117 **cell**



Expect More. Get More.

TomSmithLandandHomes.com

Information is believed to be accurate but not guaranteed.



LandReport
2011-2022
AMERICA'S
BEST
BROKERAGES

Call me today!

ELI FERGUSON, REALTOR®
Eli@TomSmithLand.com
601.990.5070 office | 601.757.7117 cell



TomSmithLandandHomes.com

Information is believed to be accurate but not guaranteed.



Call me today!

ELI FERGUSON, REALTOR®
Eli@TomSmithLand.com
601.990.5070 office | 601.757.7117 cell



TomSmithLandandHomes.com

Information is believed to be accurate but not guaranteed.



Aerial Map

[Click for Interactive Map](#)

Call me today!

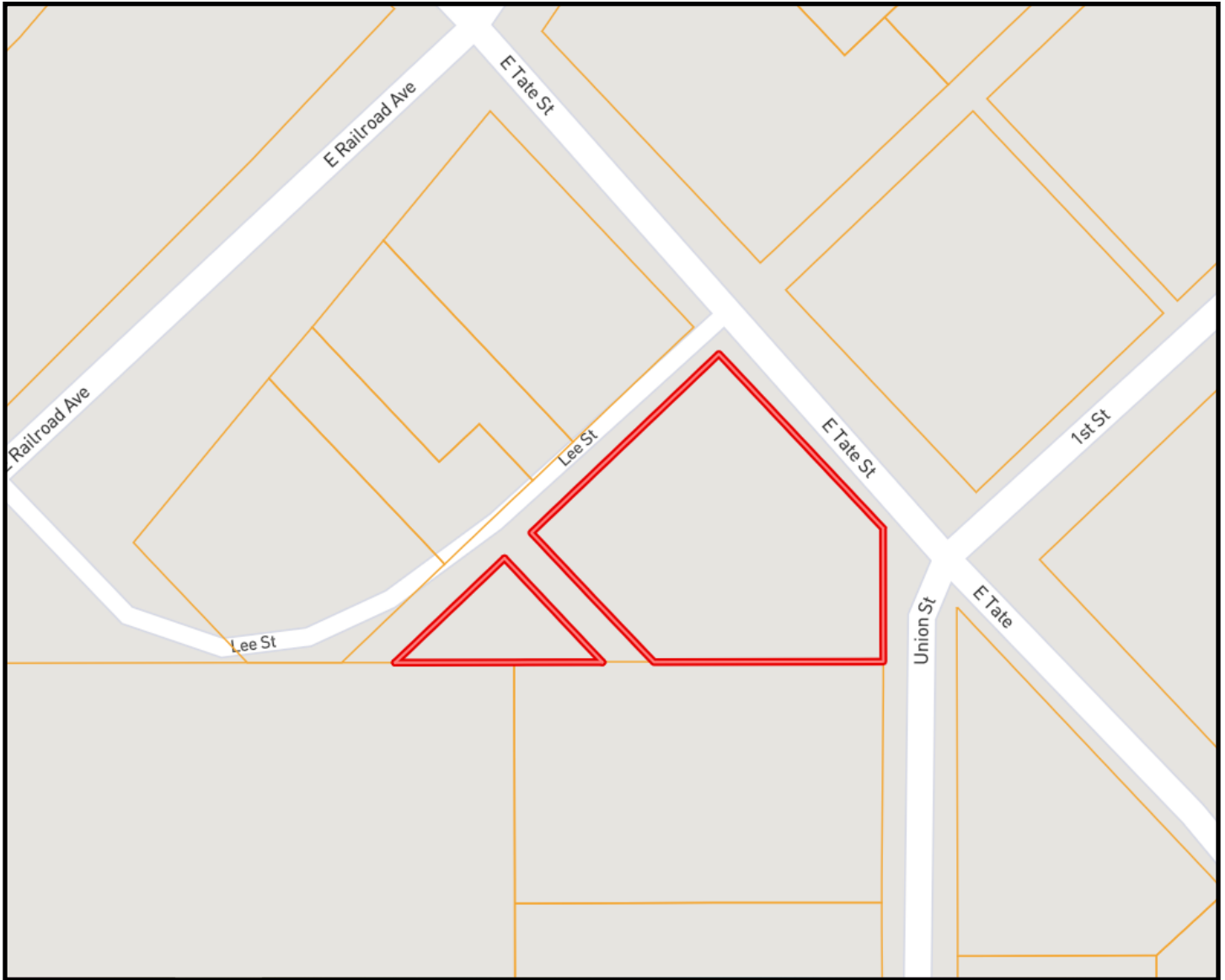


ELI FERGUSON, REALTOR®
Eli@TomSmithLand.com
601.990.5070 **office** | 601.757.7117 **cell**



TomSmithLandandHomes.com

Information is believed to be accurate but not guaranteed.



Ownership Map



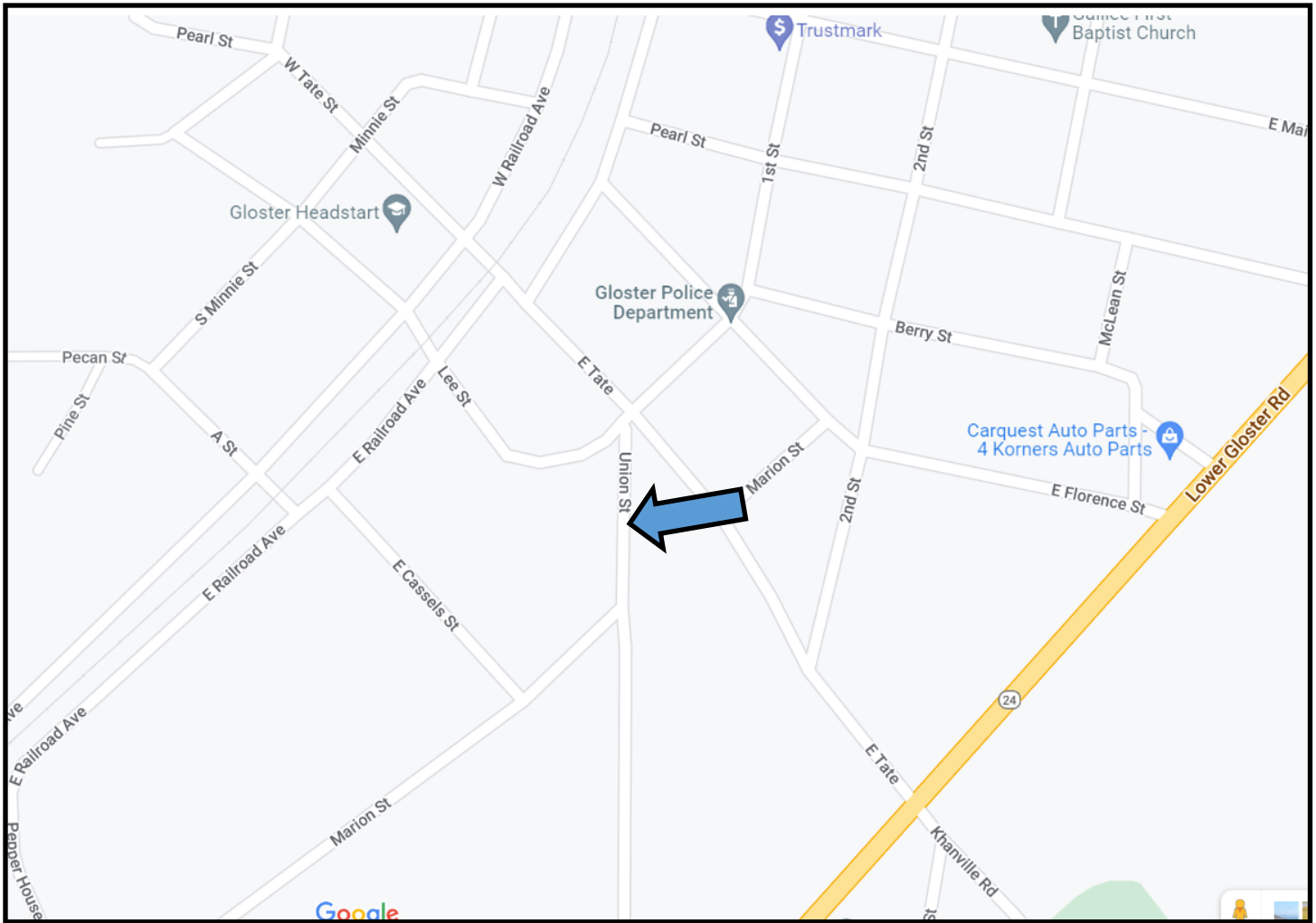
Call me today!

ELI FERGUSON, REALTOR®
Eli@TomSmithLand.com
601.990.5070 **office** | 601.757.7117 **cell**



TomSmithLandandHomes.com

Information is believed to be accurate but not guaranteed.



Directional Map

Directions from the intersection of Hwy 33 W/Union Street in Gloster, MS: Turn onto Union Street. Travel 0.3 miles and the home will be on your left.

Address: 510 Union Street Gloster, MS 39638



Call me today!

ELI FERGUSON, REALTOR®
 Eli@TomSmithLand.com
 601.990.5070 **office** | 601.757.7117 **cell**



Expect More. Get More.

TomSmithLandandHomes.com

Information is believed to be accurate but not guaranteed.