



20+/- Acre Secluded Recreational Land Tract Lawrence County, MS



\$55,000



Have you been looking for a quiet weekend getaway or a new hunting spot for the fall? These 20+/- acres of mixed timber might be just what you need! This tract consists primarily of hardwoods, and its road beds from former trail systems traverse the property, and can easily be taken back in for UTV use with a little TLC. You can find ample deer signs throughout the property. Terrain consists of rolling hills making for beautiful bottoms and alluring ridges. Accessed by a deeded easement this tract is ideal for anyone looking for seclusion. Located in Lawrence Co, MS, just 30 minutes East of Brookhaven, MS, and approximately 2 hours North of Baton Rouge, LA. Call Blake Sasser to view this property today!

Directions from Monticello, Mississippi, Intersection of Hwy 27 and Hwy 84E: travel south on MS-27 S toward Henry Bass Road for 7.1 miles. Turn left onto Hammond Rd, and the entrance will be on the right in 2.0 miles.



Call me today!

BLAKE SASSER, REALTOR®
Blake@TomSmithLand.com
601.990.5070 **office** | 601.757.5027 **cell**



Expect More. Get More.

TomSmithLandandHomes.com

Information is believed to be accurate but not guaranteed.



Call me today!

BLAKE SASSER, REALTOR®
Blake@TomSmithLand.com
601.990.5070 **office** | 601.757.5027 **cell**



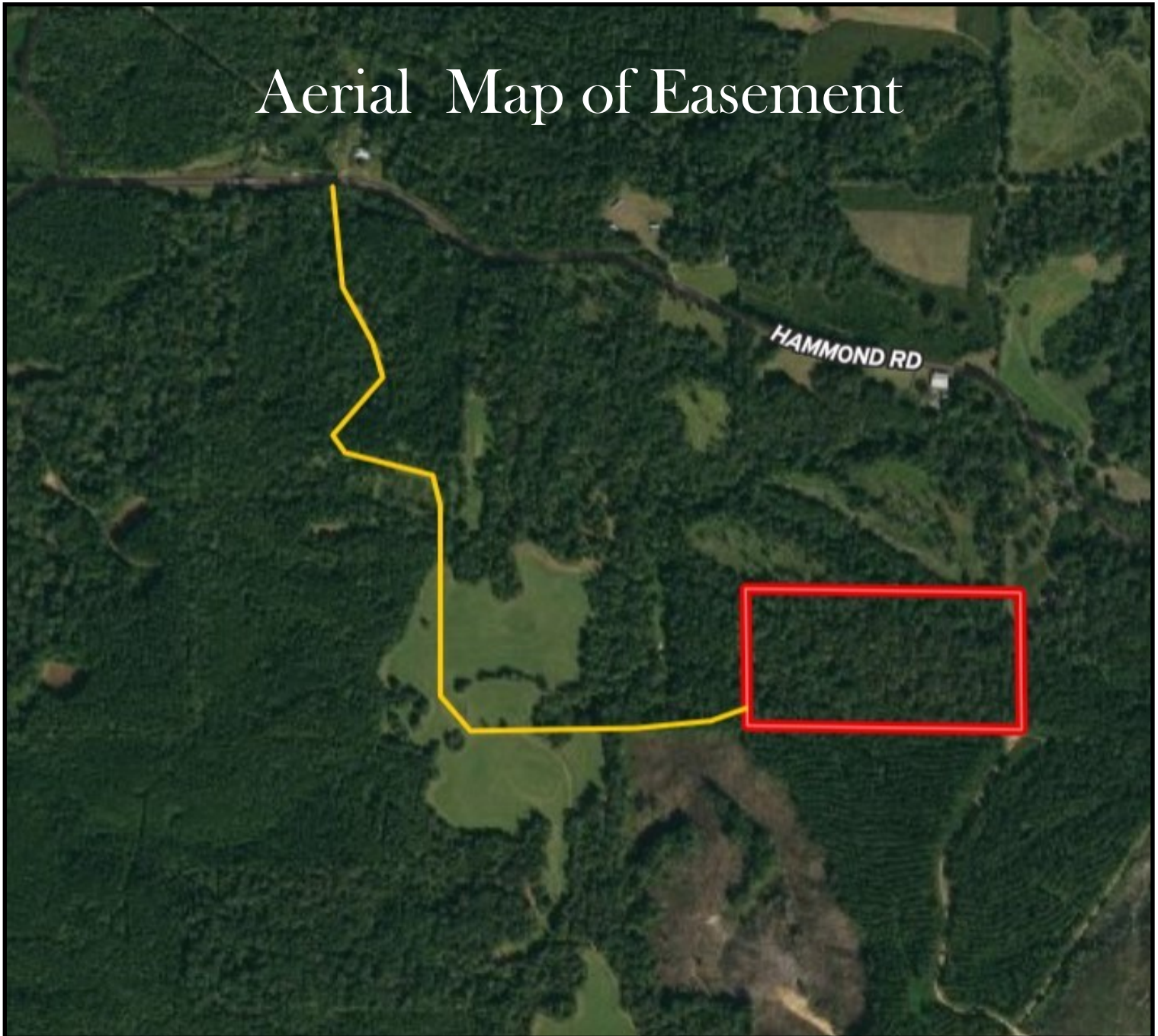
Expect More. Get More.



TomSmithLandandHomes.com

Information is believed to be accurate but not guaranteed.

Aerial Map of Easement



Call me today!

BLAKE SASSER, REALTOR®
Blake@TomSmithLand.com
601.990.5070 **office** | 601.757.5027 **cell**



TomSmithLandandHomes.com

Information is believed to be accurate but not guaranteed.

Aerial Map

20+/-

Acres

81.4606

-90.1218

[Click here for interactive map!](#)

Call me today!

BLAKE SASSER, REALTOR®
Blake@TomSmithLand.com
601.990.5070 **office** | 601.757.5027 **cell**

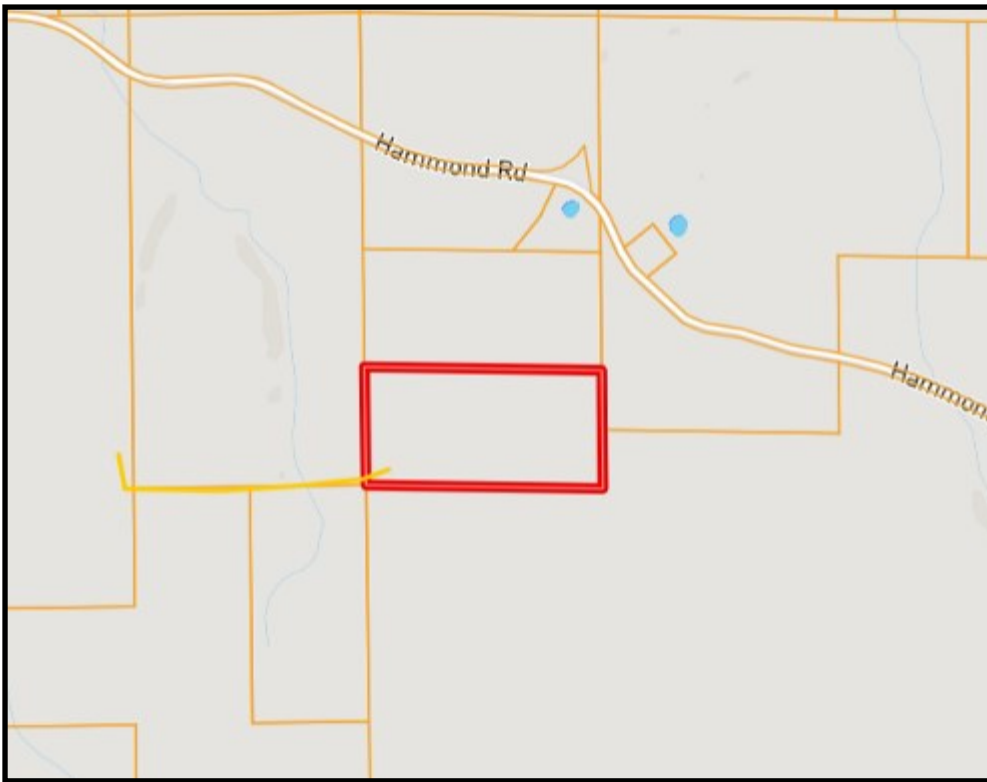


Expect More. Get More.



TomSmithLandandHomes.com

Information is believed to be accurate but not guaranteed.



Ownership
Map



Topo
Map

Call me today!

BLAKE SASSER, REALTOR®
Blake@TomSmithLand.com
601.990.5070 **office** | 601.757.5027 **cell**



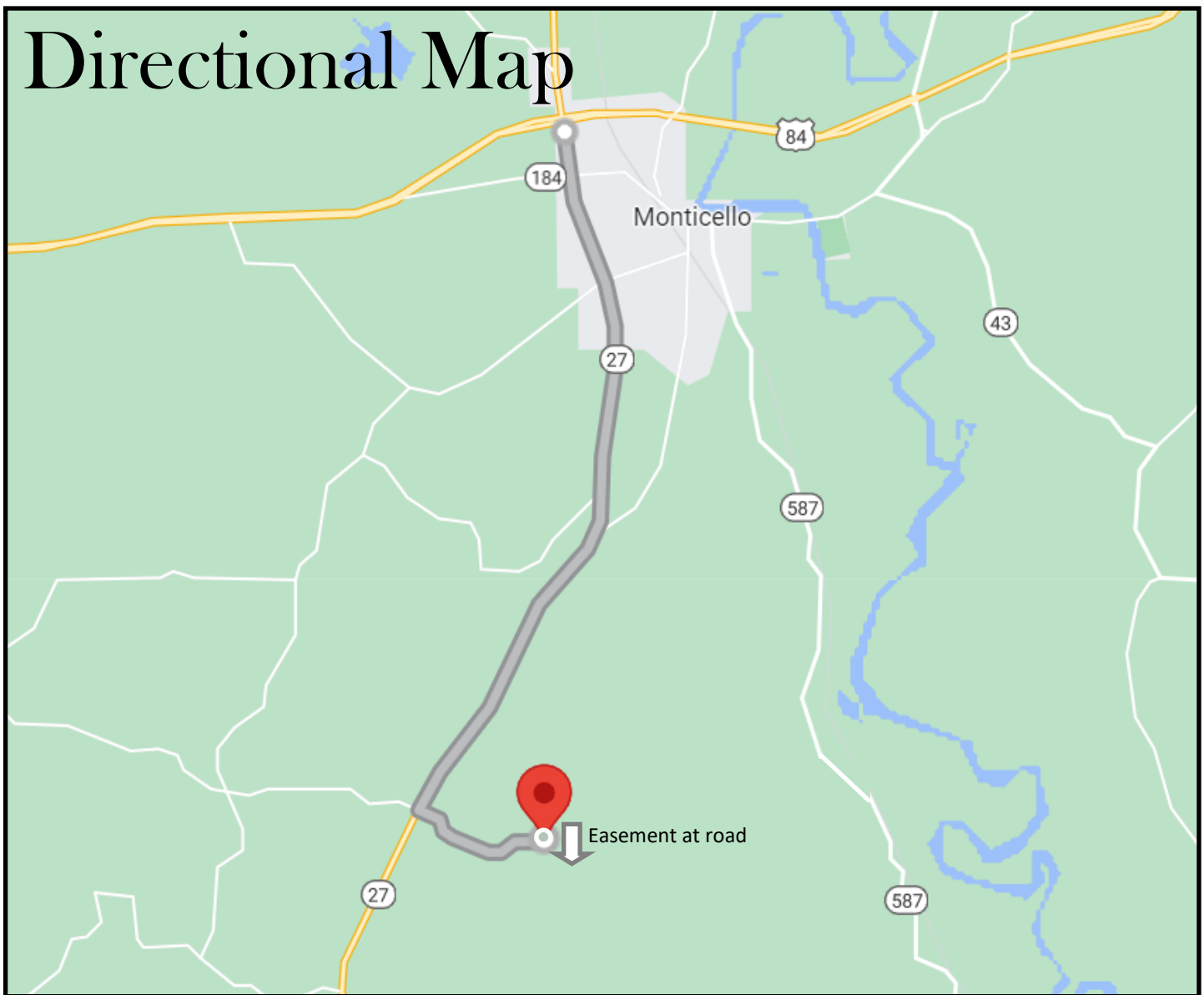
Expect More. Get More.



TomSmithLandandHomes.com

Information is believed to be accurate but not guaranteed.

Directional Map



Directions from Monticello, Mississippi, Intersection of Hwy 27 and Hwy 84E: travel south on MS-27 S toward Henry Bass Road for 7.1 miles. Turn left onto Hammond Rd, and the entrance will be on the right in 2.0 miles.

[Click here for directions!](#)

Call me today!

BLAKE SASSER, REALTOR®
Blake@TomSmithLand.com
601.990.5070 **office** | 601.757.5027 **cell**



TomSmithLandandHomes.com

Information is believed to be accurate but not guaranteed.