

14.24+/- Acres of Beautiful Pastureland Lawrence County, MS



Located in Lawrence County, this 14.24+/- acres consists mainly of beautiful open pasture. The small stand of trees to the west of the property is primarily hardwoods. Trees wrap the edges of the property, making for scenic views. Pasture has been cut for hay over the last few years, but this open ground would be perfect for many uses. Accessed by a deeded easement, this tract is ideal for anyone looking for seclusion. Located just 30 minutes East of Brookhaven, MS, and approximately 2 hours North of Baton Rouge, LA. Call Blake Sasser to view this property today!

Directions from Monticello, Mississippi, Intersection of Hwy 27 and Hwy 84E: travel south on MS-27 S toward Henry Bass Road for 7.1 miles. Turn left onto Hammond Rd, and the easement entrance will be on the right in 2.0 miles.



Call me today!

BLAKE SASSER, REALTOR®
Blake@TomSmithLand.com
601.990.5070 **office** | 601.757.5027 **cell**



TomSmithLandandHomes.com

Information is believed to be accurate but not guaranteed.



Call me today!

BLAKE SASSER, REALTOR®
Blake@TomSmithLand.com
601.990.5070 **office** | 601.757.5027 **cell**

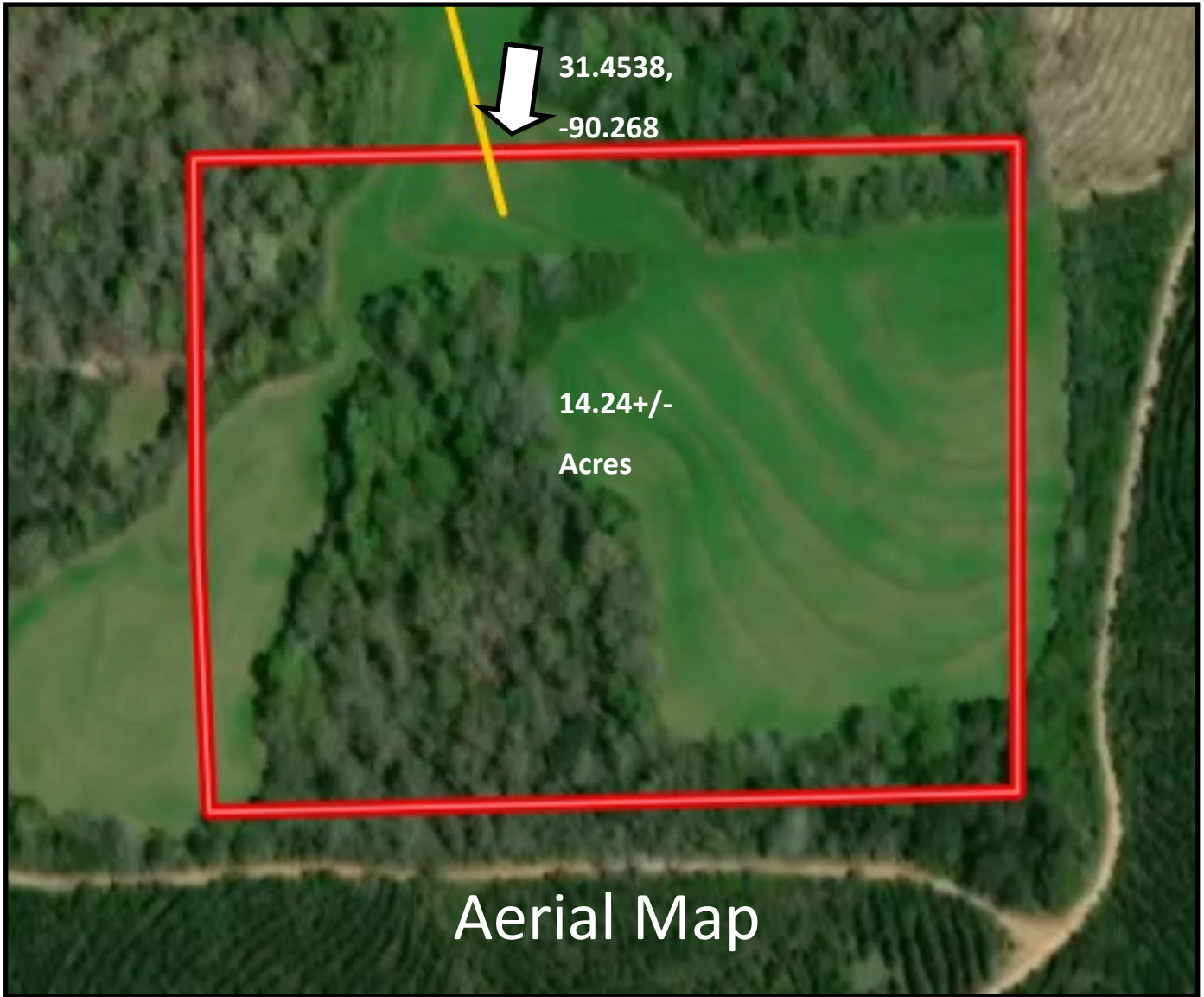


Expect More. Get More.



TomSmithLandandHomes.com

Information is believed to be accurate but not guaranteed.



[Click here for interactive map](#)

Call me today!

BLAKE SASSER, REALTOR®
Blake@TomSmithLand.com
601.990.5070 **office** | 601.757.5027 **cell**



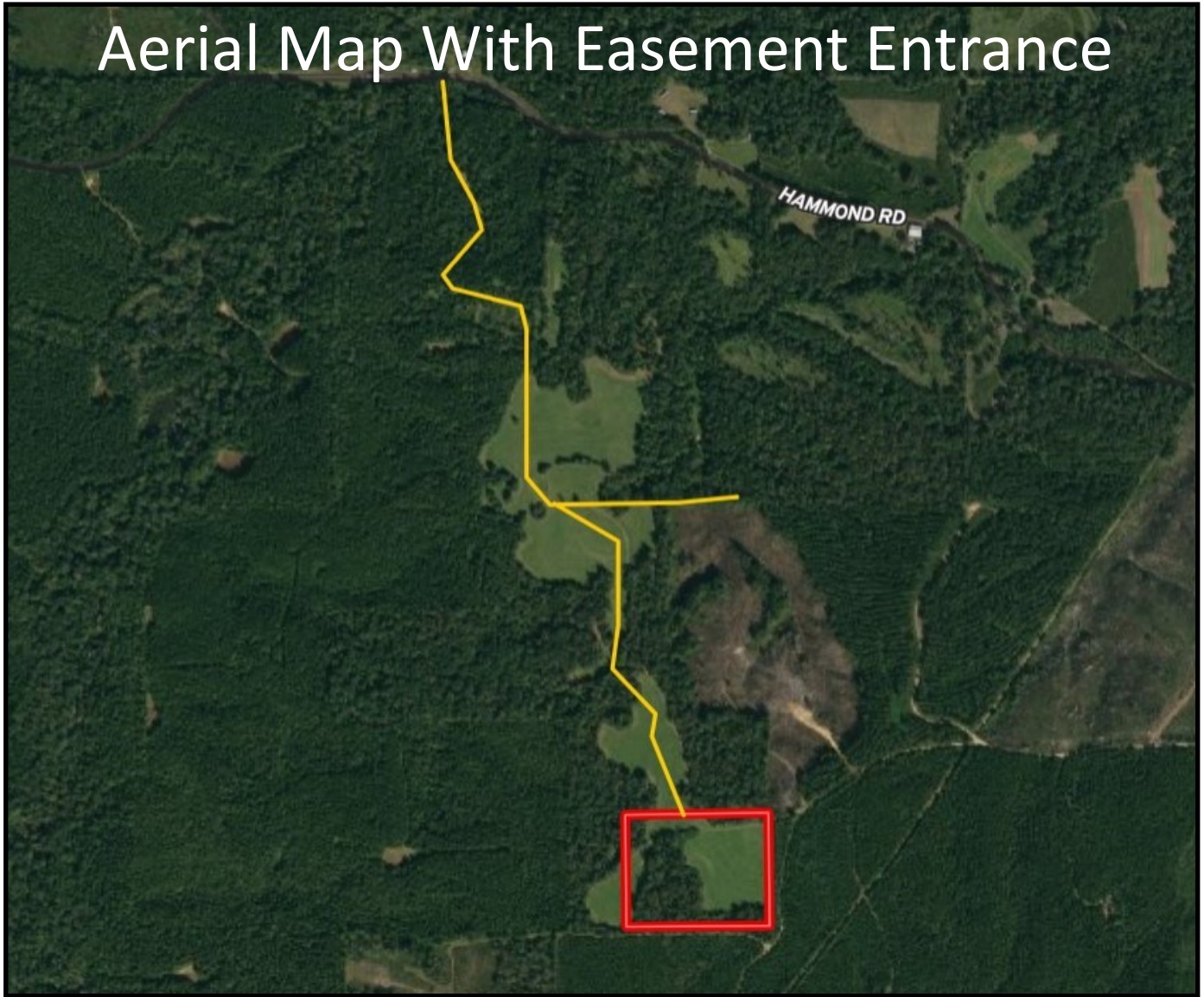
Expect More. Get More.



TomSmithLandandHomes.com

Information is believed to be accurate but not guaranteed.

Aerial Map With Easement Entrance



[Click here for interactive map](#)

Call me today!

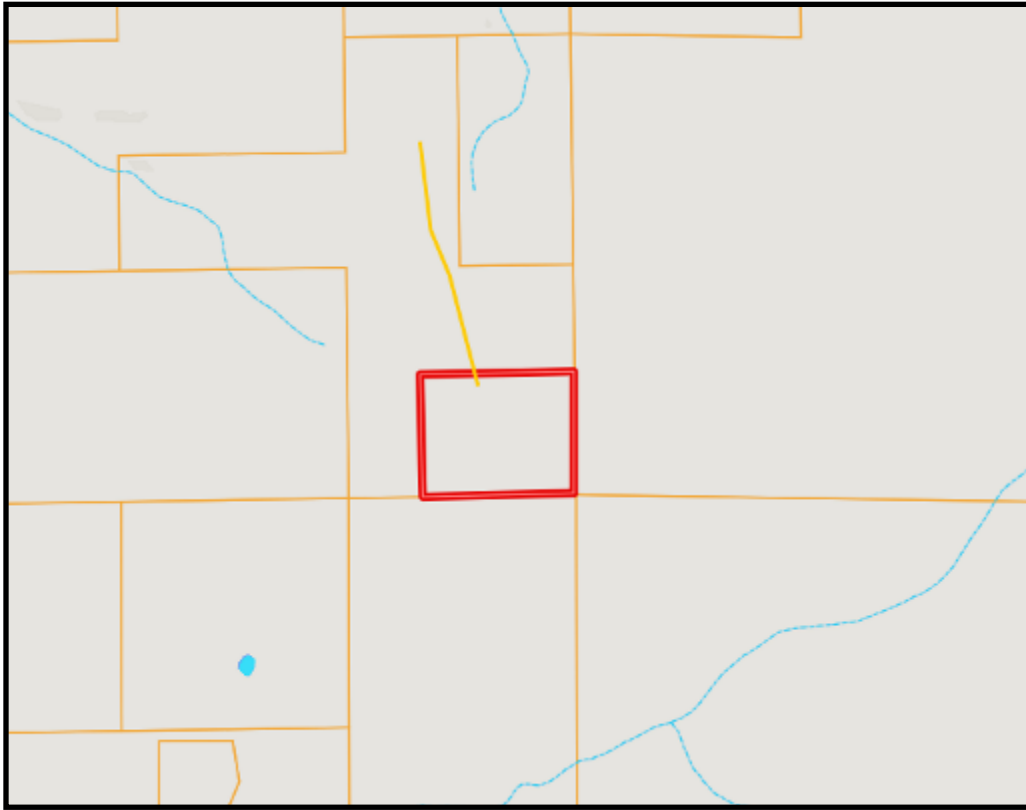
BLAKE SASSER, REALTOR®
Blake@TomSmithLand.com
601.990.5070 **office** | 601.757.5027 **cell**



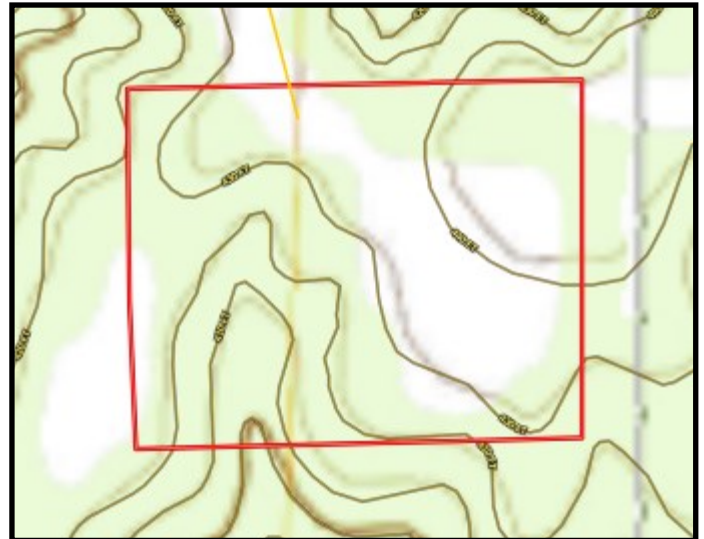
Expect More. Get More.

TomSmithLandandHomes.com

Information is believed to be accurate but not guaranteed.



Ownership
Map



Topo
Map

Call me today!

BLAKE SASSER, REALTOR®
Blake@TomSmithLand.com
601.990.5070 **office** | 601.757.5027 **cell**



Expect More. Get More.

TomSmithLandandHomes.com

Information is believed to be accurate but not guaranteed.



Directional Map

Directions from Monticello, Mississippi, Intersection of Hwy 27 and Hwy 84E: travel south on MS-27 S toward Henry Bass Road for 7.1 miles. Turn left onto Hammond Rd, and the easement entrance will be on the right in 2.0 miles.

[Click here for directions](#)

Call me today!

BLAKE SASSER, REALTOR®
Blake@TomSmithLand.com
601.990.5070 **office** | 601.757.5027 **cell**



Expect More. Get More.

TomSmithLandandHomes.com

Information is believed to be accurate but not guaranteed.