

Renovated Home in Cleveland

Bolivar County, MS



710 Yale Street Cleveland, MS 38732

\$185,500

Take a look at this three bedroom, two bathroom, completely renovated home located in Bolivar County, MS! The home has a new architectural shingle roof, a new ac unit and fresh paint on the exterior. Along with a one car carport and a covered back patio area that is great for entertaining. On the inside, the home was completely renovated from the studs out with new sheetrock, new paint, new windows, new flooring, new bathrooms, and a new kitchen. Why wait? Call today for your private showing! (662)441-2500.

Directions from the intersection of Hwy 8 and Hwy 61 Cleveland, MS: Travel West on Hwy 8 for 0.6 miles, turn left onto N. Leflore Ave and in 1 mile turn right onto Yale Street and in 0.3 miles the destination will be on the right.



Call me today!

TRACEY BELL, MANAGING BROKER
Tracey@TomSmithLand.com
662.441.2500 **office** | 662.719.4720 **cell**



TomSmithLandandHomes.com

Information is believed to be accurate but not guaranteed.



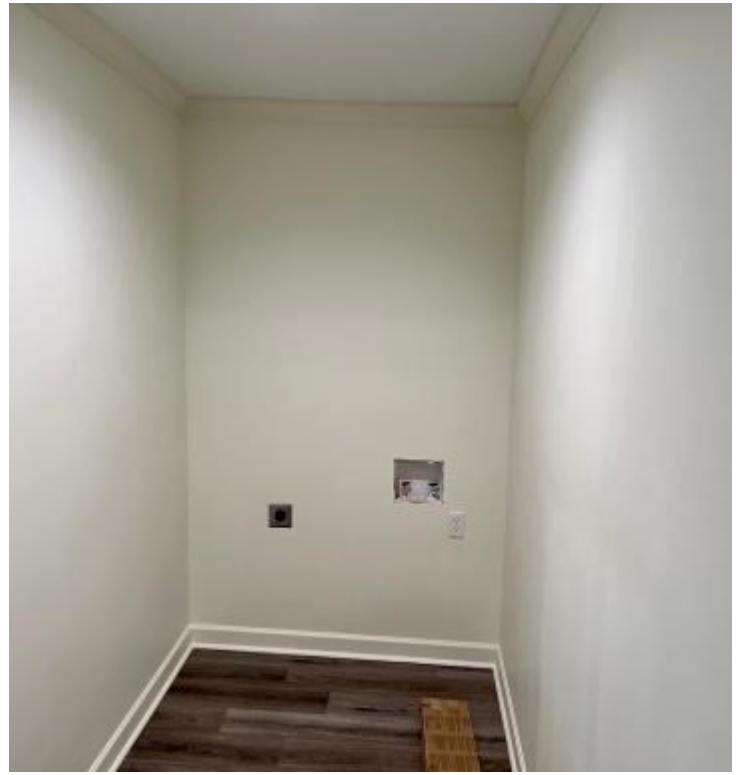
Call me today!

TRACEY BELL, MANAGING BROKER
 Tracey@TomSmithLand.com
 662.441.2500 **office** | 662.719.4720 **cell**



TomSmithLandandHomes.com

Information is believed to be accurate but not guaranteed.



Call me today!

TRACEY BELL, MANAGING BROKER

Tracey@TomSmithLand.com

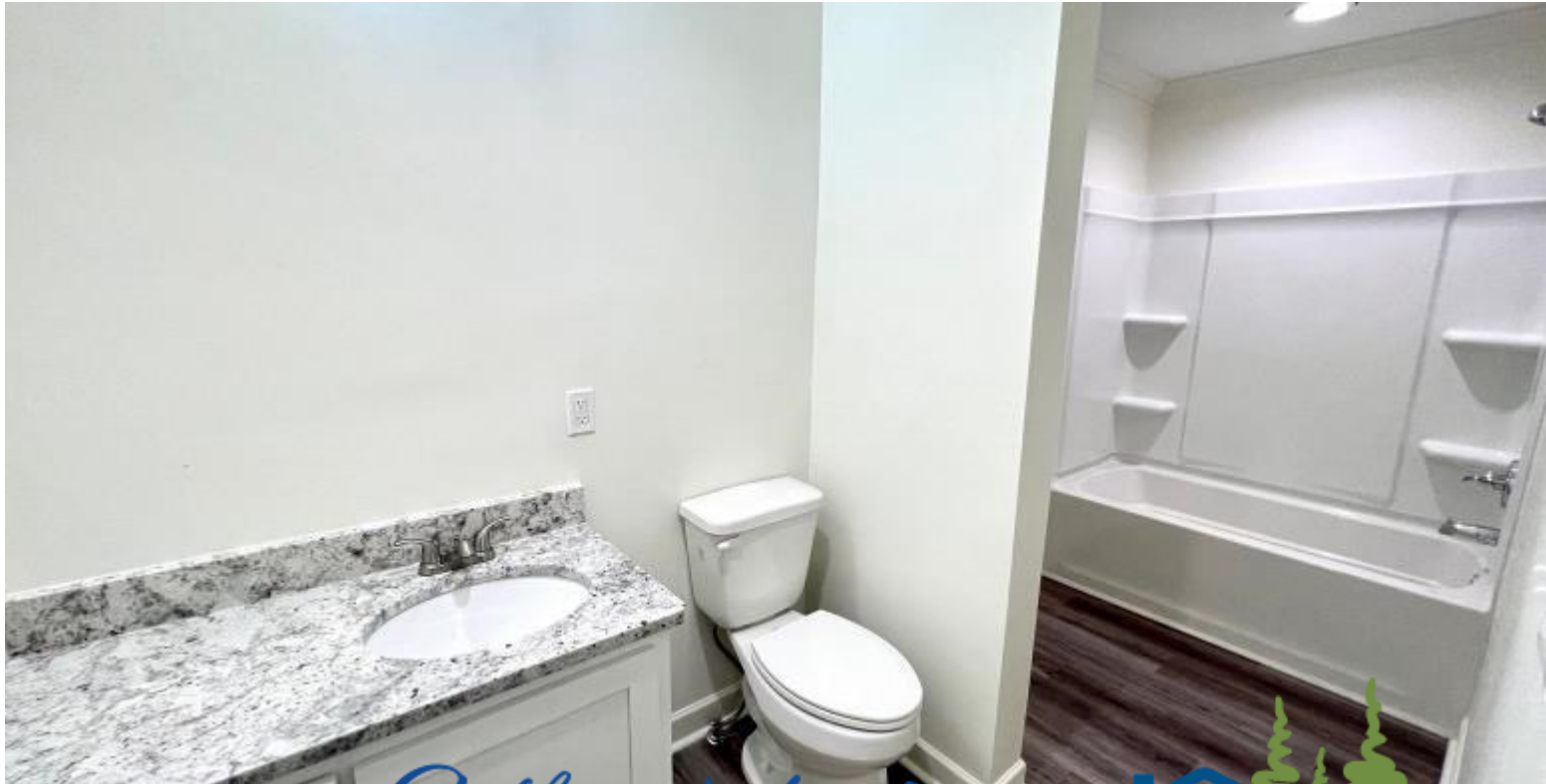
662.441.2500 **office** | 662.719.4720 **cell**



Expect More. Get More.

TomSmithLandandHomes.com

Information is believed to be accurate but not guaranteed.



Call me today!

TRACEY BELL, MANAGING BROKER
Tracey@TomSmithLand.com
662.441.2500 **office** | 662.719.4720 **cell**



TomSmithLandandHomes.com

Information is believed to be accurate but not guaranteed.



Call me today!

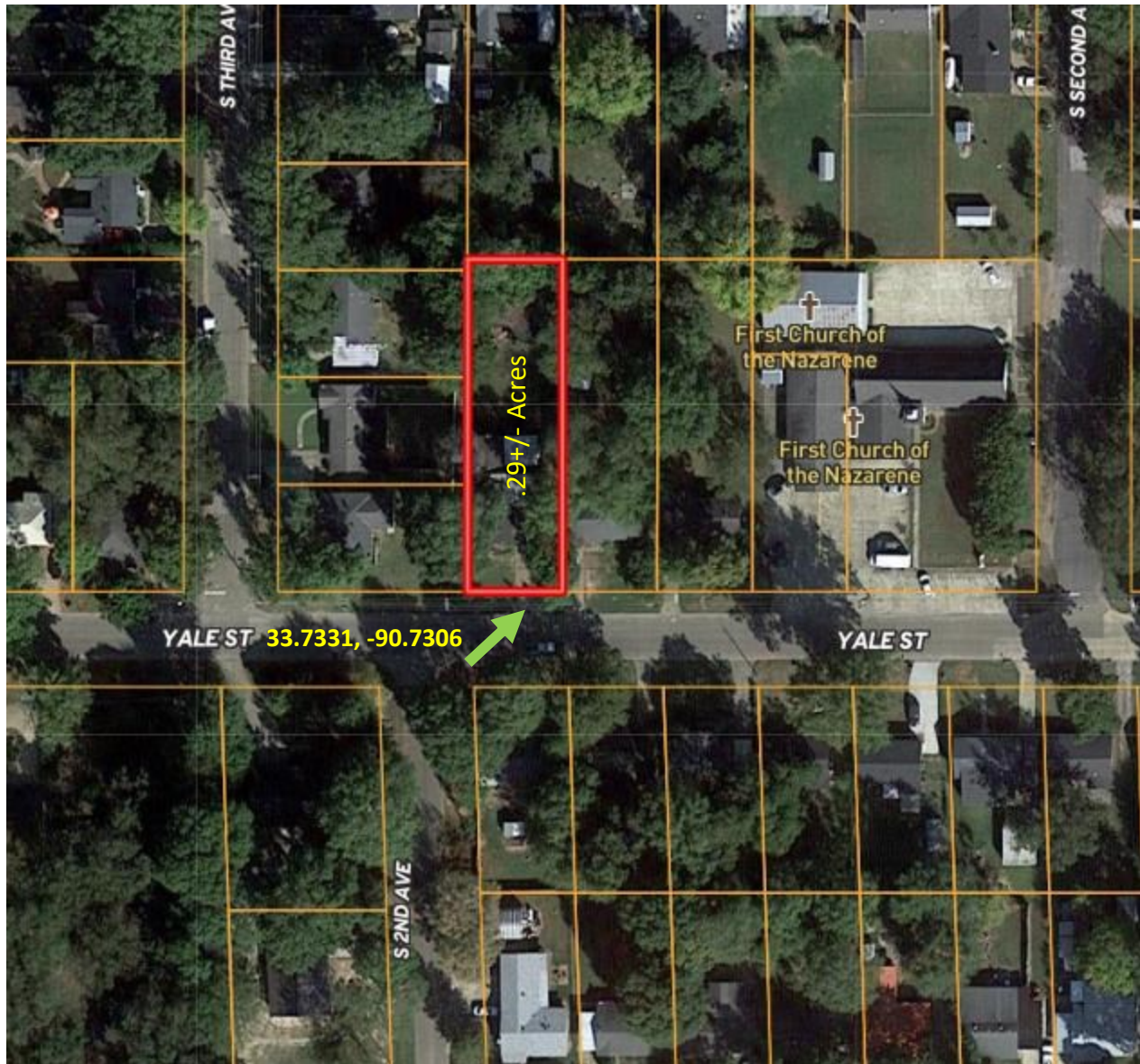
TRACEY BELL, MANAGING BROKER
Tracey@TomSmithLand.com
662.441.2500 **office** | 662.719.4720 **cell**



TomSmithLandandHomes.com

Information is believed to be accurate but not guaranteed.

AERIAL MAP



[Click for Interactive Map](#)

Call me today!

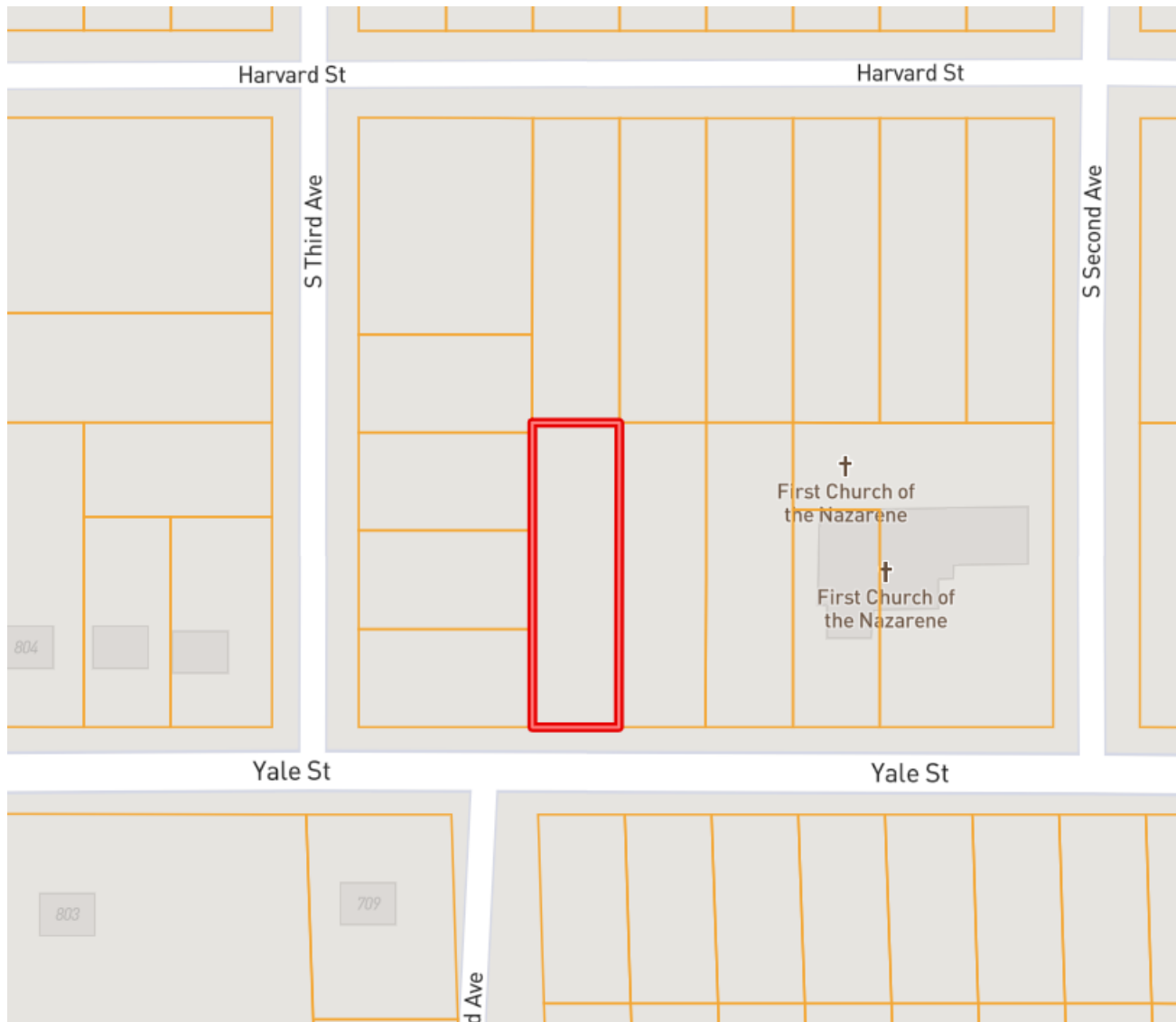
TRACEY BELL, MANAGING BROKER
Tracey@TomSmithLand.com
662.441.2500 **office** | 662.719.4720 **cell**



TomSmithLandandHomes.com

Information is believed to be accurate but not guaranteed.

OWNERSHIP MAP



Call me today!

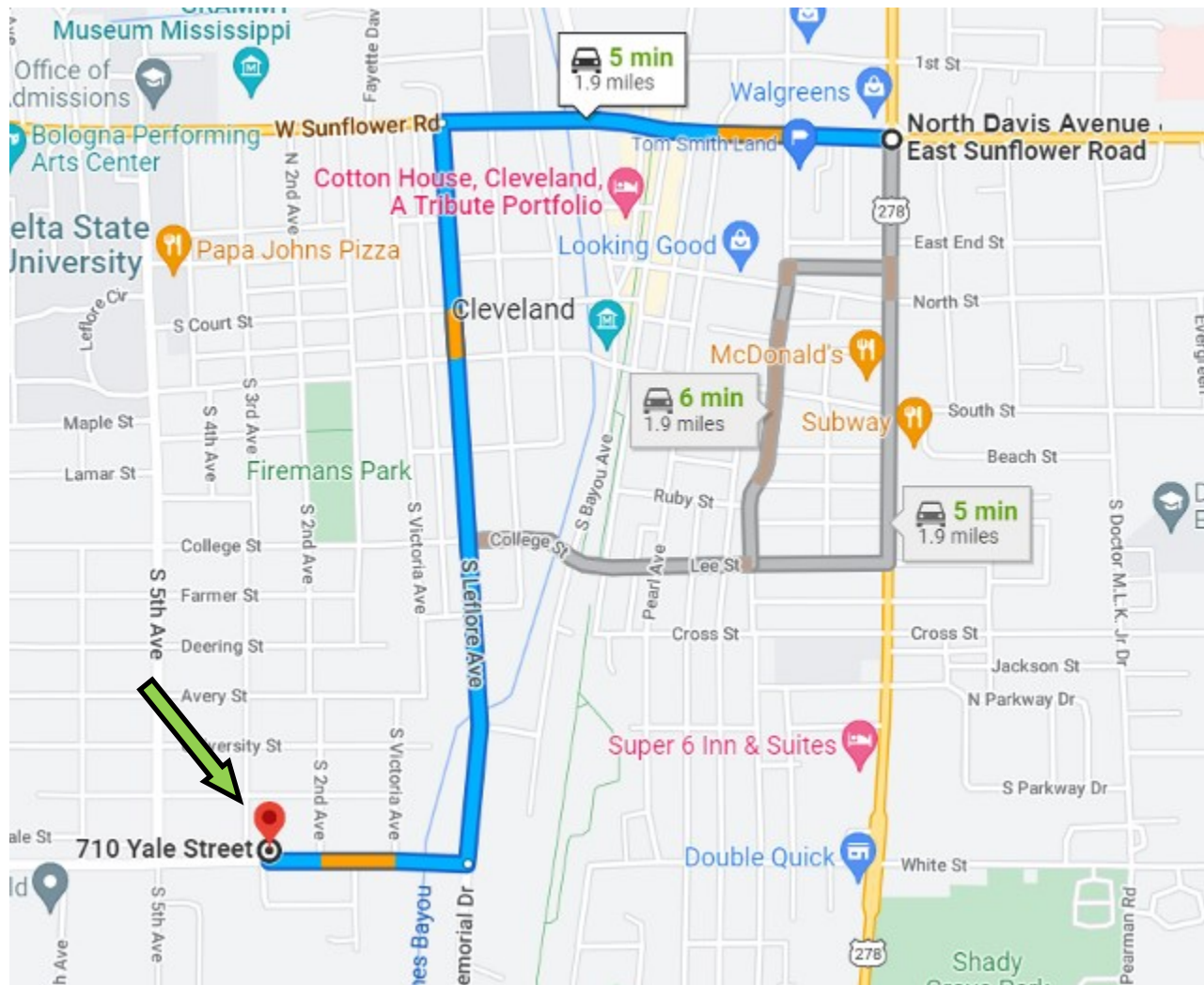
TRACEY BELL, MANAGING BROKER
Tracey@TomSmithLand.com
662.441.2500 **office** | 662.719.4720 **cell**



TomSmithLandandHomes.com

Information is believed to be accurate but not guaranteed.

DIRECTIONAL MAP



710 Yale Street Cleveland, MS 38732

Directions from the intersection of Hwy 8 and Hwy 61 Cleveland, MS: Travel West on Hwy 8 for 0.6 miles, turn left onto N. Leflore Ave and in 1 mile turn right onto Yale Street and in 0.3 miles the destination will be on the right.

Call me today!

TRACEY BELL, MANAGING BROKER
Tracey@TomSmithLand.com
662.441.2500 **office** | 662.719.4720 **cell**



TomSmithLandandHomes.com

Information is believed to be accurate but not guaranteed.