



# SPACIOUS HOME ON 4.30± ACRES GRENADA COUNTY, MS

94 Semmes Road Grenada, MS 38901



# \$375,000

Welcome to your new spacious home in Grenada, MS! This two-story, four bedroom, four bath, 3,733 SF home features a loft, office, spacious kitchen with island, pantry, formal dining room, and a large living room. Each of the bedrooms is oversized with plenty of storage. The primary bedroom has a large walk-in closets and a large bathroom with a separate soaking tub. The home has a lovely patio with a fenced backyard, and is situated on 4.30± secluded acres at the end of a dead-end street. If you are looking for a spacious home in a secluded setting, give Anthony Steen a call to schedule your private showing today! If you are looking for a spacious home in a secluded setting, give Anthony Steen a call to schedule your private showing today!



*Call me today!*

**ANTHONY STEEN**, REALTOR®  
Anthony@TomSmithLand.com  
662.441.2500 **office** | 662.645.5151 **cell**



# TomSmithLandandHomes.com

Information is believed to be accurate but not guaranteed.



*Call me today!*

**ANTHONY STEEN**, REALTOR®  
Anthony@TomSmithLand.com  
662.441.2500 office | 662.645.5151 cell



**TomSmithLandandHomes.com**

Information is believed to be accurate but not guaranteed.



*Call me today!*

**ANTHONY STEEN**, REALTOR®  
Anthony@TomSmithLand.com  
662.441.2500 office | 662.645.5151 cell



**TomSmithLandandHomes.com**

Information is believed to be accurate but not guaranteed.



*Call me today!*

**ANTHONY STEEN**, REALTOR®  
Anthony@TomSmithLand.com  
662.441.2500 **office** | 662.645.5151 **cell**



Expect More. Get More.



**TomSmithLandandHomes.com**

Information is believed to be accurate but not guaranteed.



*Call me today!*

**ANTHONY STEEN**, REALTOR®  
Anthony@TomSmithLand.com  
662.441.2500 office | 662.645.5151 cell

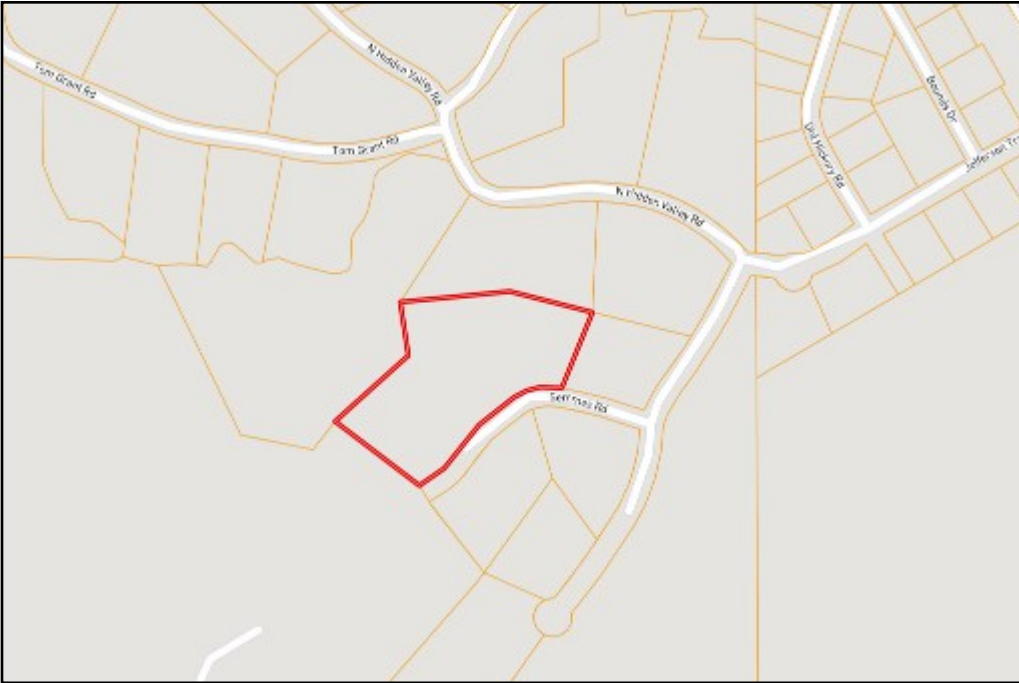


Expect More. Get More.



**TomSmithLandandHomes.com**

Information is believed to be accurate but not guaranteed.



# OWNERSHIP MAP



# AERIAL MAP

INTERACTIVE MAP

*Call me today!*

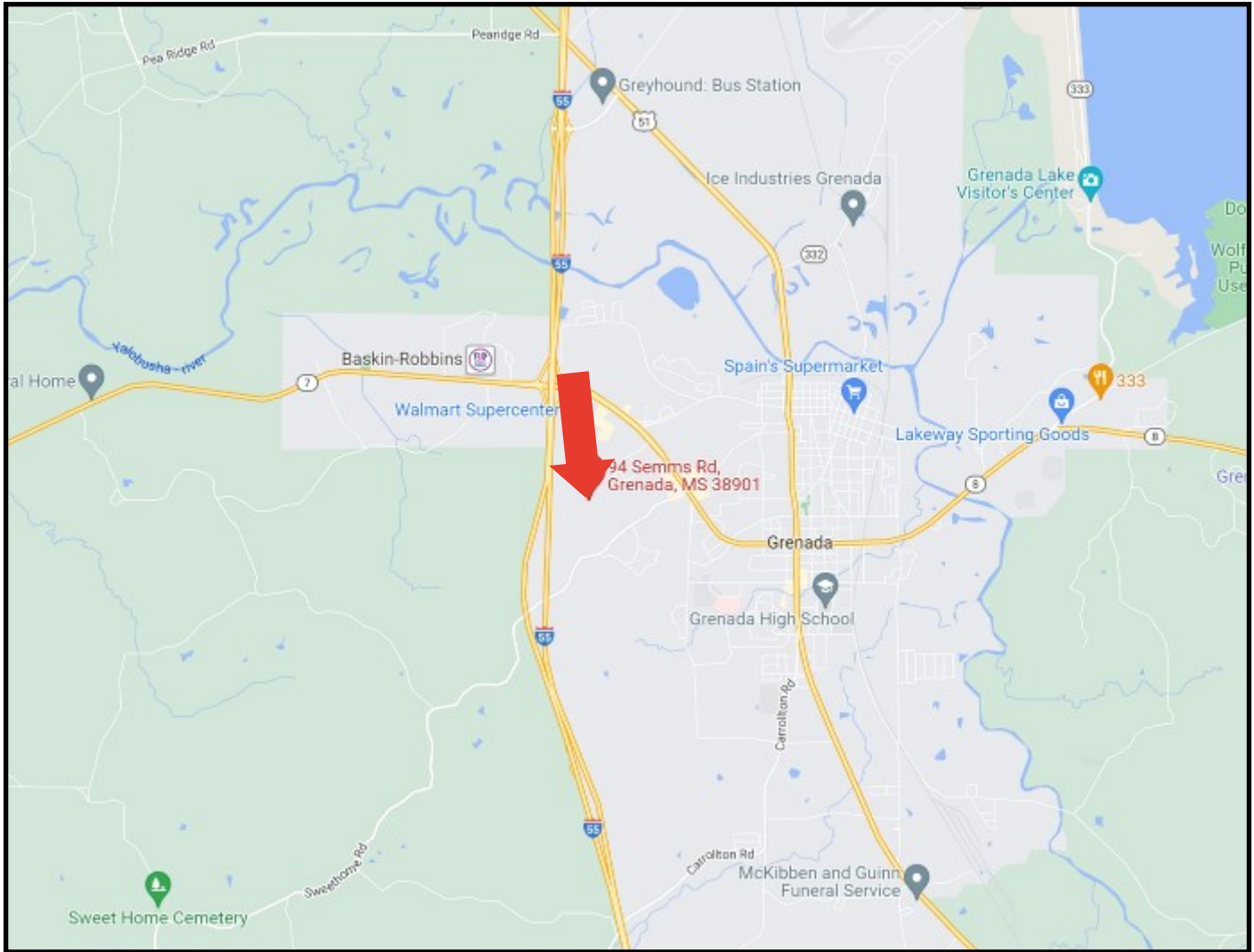
**ANTHONY STEEN**, REALTOR®  
Anthony@TomSmithLand.com  
662.441.2500 office | 662.645.5151 cell



**TomSmithLandandHomes.com**

Information is believed to be accurate but not guaranteed.

# DIRECTIONAL MAP



Directions from the Intersection of I-55N and Hwy 8 in Grenada, MS: Take Exit 206 for Hwy 8 Grenada/Greenwood. Keep right on Hwy 8 and travel 2 miles. Turn right onto Jefferson Trail and travel .5 miles. Turn left onto S Hidden Valley Rd and then make an immediate right on Semmes Road. The home will be on your right.

94 Semmes Road, Grenada, MS 38901



*Call me today!*

**ANTHONY STEEN**, REALTOR®  
Anthony@TomSmithLand.com  
662.441.2500 **office** | 662.645.5151 **cell**



Expect More. Get More.

**TomSmithLandandHomes.com**

Information is believed to be accurate but not guaranteed.