



SPACIOUS HOME ON 4.30± ACRES GRENADA COUNTY, MS



\$350,000

Welcome to your new spacious home in Grenada, MS! This two-story, four bedroom, four bath, 3,733 SF home features a loft, office, spacious kitchen with island, pantry, formal dining room, and a large living room. Each of the bedrooms is oversized with plenty of storage. The primary bedroom has a large walk-in closets and a large bathroom with a separate soaking tub. The home has a lovely patio with a fenced backyard, and is situated on 4.30± secluded acres at the end of a dead-end street. If you are looking for a spacious home in a secluded setting, give Anthony Steen a call to schedule your private showing today! If you are looking for a spacious home in a secluded setting, give Anthony Steen a call to schedule your private showing today!



*Call me
today!*

ANTHONY STEEN, REALTOR®
Anthony@TomSmithLand.com
662.441.2500 **office** | 662.645.5151 **cell**



TomSmithLandandHomes.com

Information is believed to be accurate but not guaranteed.



Call me today!

ANTHONY STEEN, REALTOR®
 Anthony@TomSmithLand.com
 662.441.2500 **office** | 662.645.5151 **cell**



TomSmithLandandHomes.com

Information is believed to be accurate but not guaranteed.



Call me today!

ANTHONY STEEN, REALTOR®
 Anthony@TomSmithLand.com
 662.441.2500 **office** | 662.645.5151 **cell**



TomSmithLandandHomes.com

Information is believed to be accurate but not guaranteed.



Call me today!

ANTHONY STEEN, REALTOR®
Anthony@TomSmithLand.com
662.441.2500 **office** | 662.645.5151 **cell**



TomSmithLandandHomes.com

Information is believed to be accurate but not guaranteed.



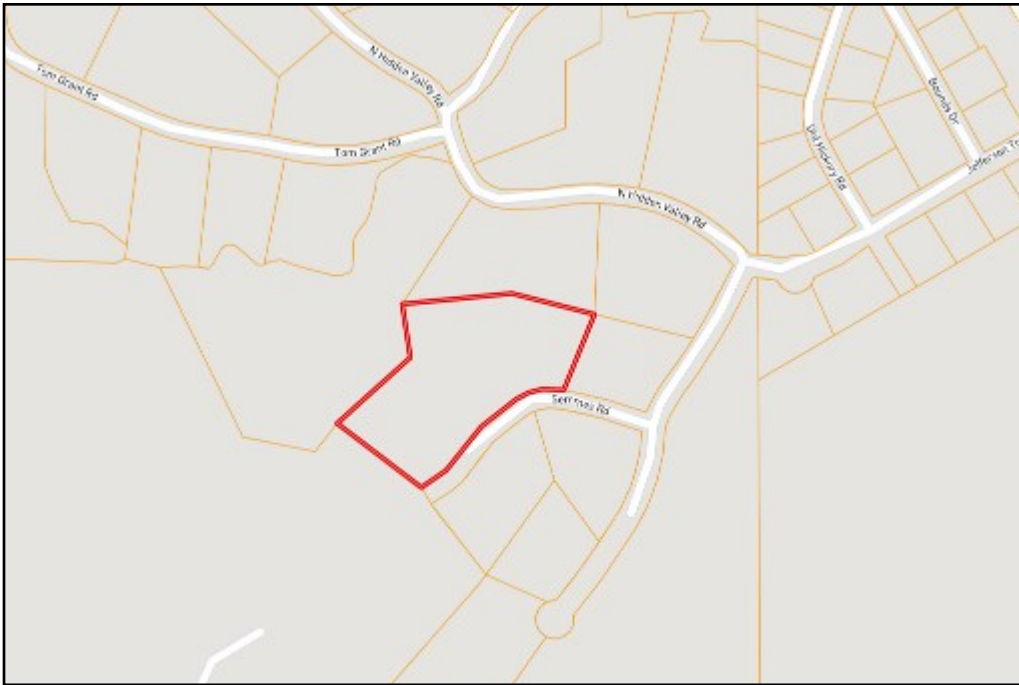
Call me today!

ANTHONY STEEN, REALTOR®
 Anthony@TomSmithLand.com
 662.441.2500 **office** | 662.645.5151 **cell**



TomSmithLandandHomes.com

Information is believed to be accurate but not guaranteed.



OWNERSHIP MAP



AERIAL MAP

Call me today!

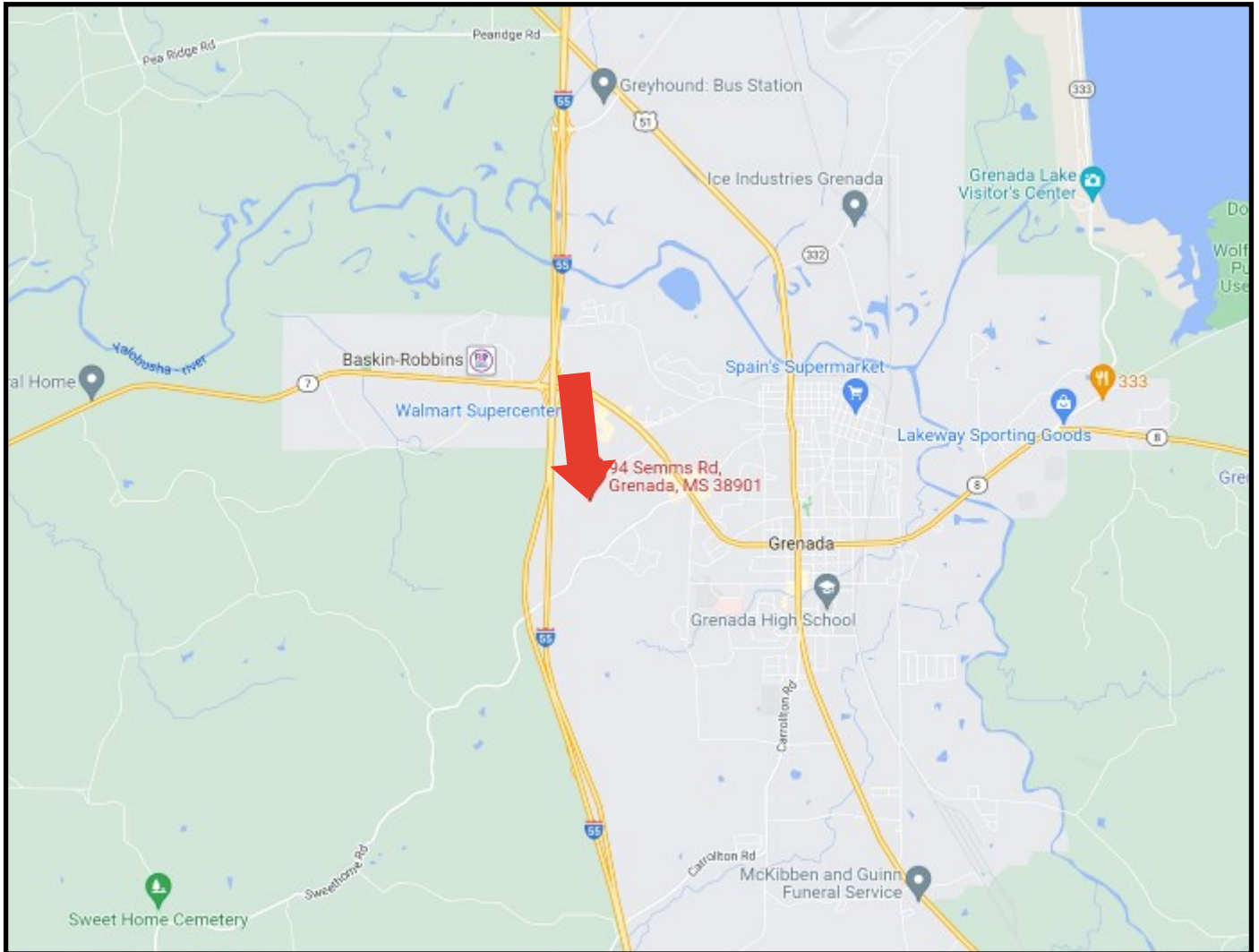
ANTHONY STEEN, REALTOR®
Anthony@TomSmithLand.com
662.441.2500 **office** | 662.645.5151 **cell**



TomSmithLandandHomes.com

Information is believed to be accurate but not guaranteed.

DIRECTIONAL MAP



Directions from the Intersection of I-55N and Hwy 8 in Grenada, MS: Take Exit 206 for Hwy 8 Grenada/Greenwood. Keep right on Hwy 8 and travel 2 miles. Turn right onto Jefferson Trail and travel .5 miles. Turn left onto S Hidden Valley Rd and then make an immediate right on Semmes Road. The home will be on your right.

94 Semmes Road, Grenada, MS 38901



Call me today!

ANTHONY STEEN, REALTOR®
Anthony@TomSmithLand.com
662.441.2500 **office** | 662.645.5151 **cell**



Expect More. Get More.

TomSmithLandandHomes.com

Information is believed to be accurate but not guaranteed.