



Warehouse Office Space

4+/- Acres Canton, MS



Metal office/warehouse building, approximately 3200+/- sq ft, located in Industrial Park in Northeast Canton close to Hwy 43 and Hwy 16. Office space has two separate offices, kitchen area and two bathrooms, one with a shower. Roll up front on the warehouse area. 4+/- fenced acres with gravel parking lot.

550 COMMERCE AVENUE, CANTON MS 39046



Call me today!

ROBIN ADAMS, REALTOR®
Robin@TomSmithHomes.com
601.898.2772 **office** | 601.502.3877 **cell**



LandReport
2011-2022
AMERICA'S
BEST
BROKERAGES

TomSmithLandandHomes.com

Information is believed to be accurate but not guaranteed.



Call me today!

ROBIN ADAMS, REALTOR®
Robin@TomSmithHomes.com
601.898.2772 office | 601.502.3877 cell



TomSmithLandandHomes.com

Information is believed to be accurate but not guaranteed.



Call me today!

ROBIN ADAMS, REALTOR®
Robin@TomSmithHomes.com
601.898.2772 office | 601.502.3877 cell



TomSmithLandandHomes.com

Information is believed to be accurate but not guaranteed.



Call me today!

ROBIN ADAMS, REALTOR®
Robin@TomSmithHomes.com
601.898.2772 office | 601.502.3877 cell



TomSmithLandandHomes.com

Information is believed to be accurate but not guaranteed.

AERIAL MAP



Click [HERE](#) for an Interactive Map

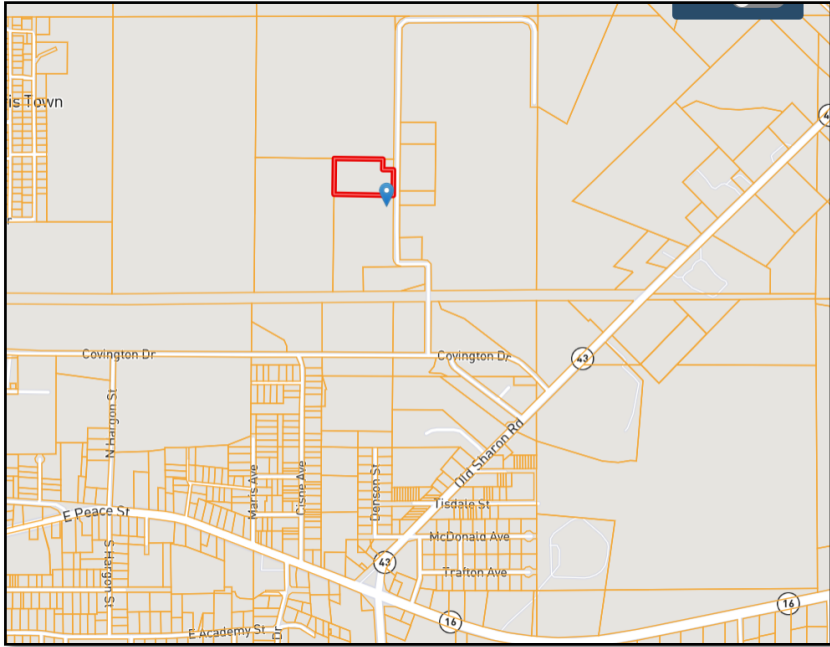
Call me today!

ROBIN ADAMS, REALTOR®
Robin@TomSmithHomes.com
601.898.2772 office | 601.502.3877 cell

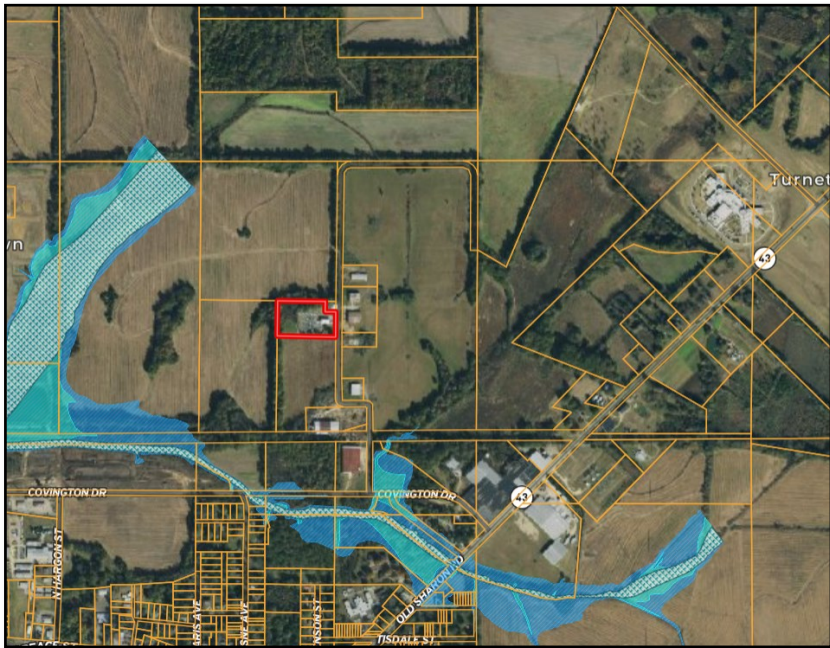


TomSmithLandandHomes.com

Information is believed to be accurate but not guaranteed.



OWNERSHIP MAP



FLOOD MAP

Call me today!

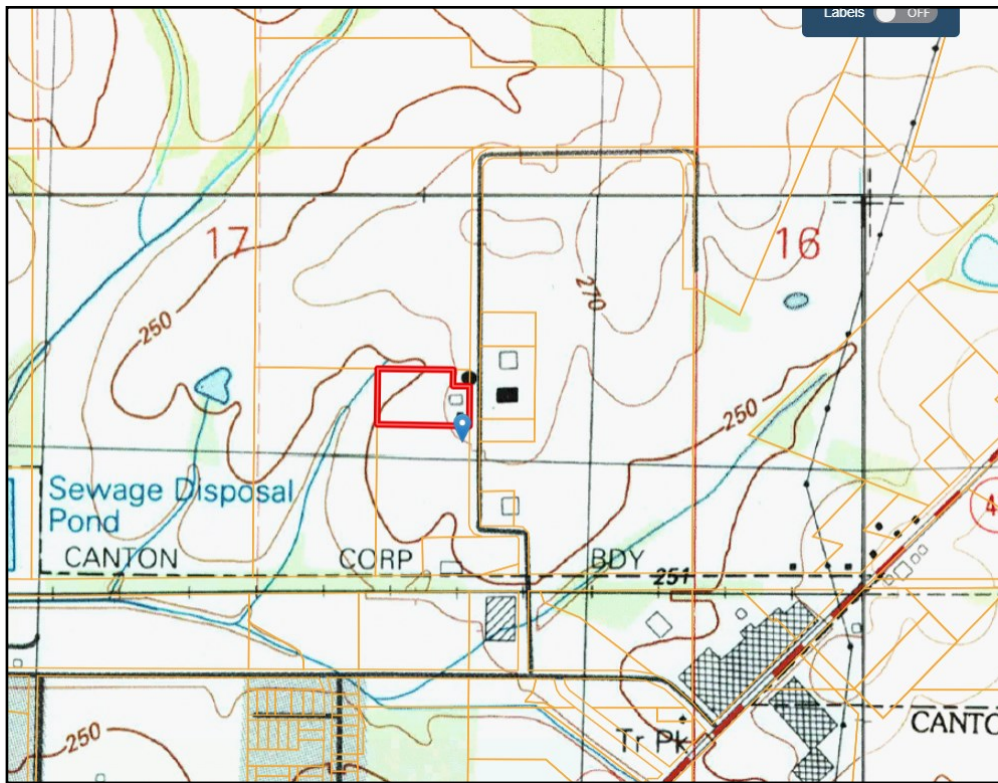
ROBIN ADAMS, REALTOR®
 Robin@TomSmithHomes.com
 601.898.2772 office | 601.502.3877 cell



TomSmithLandandHomes.com

Information is believed to be accurate but not guaranteed.

TOPO MAP



Call me today!

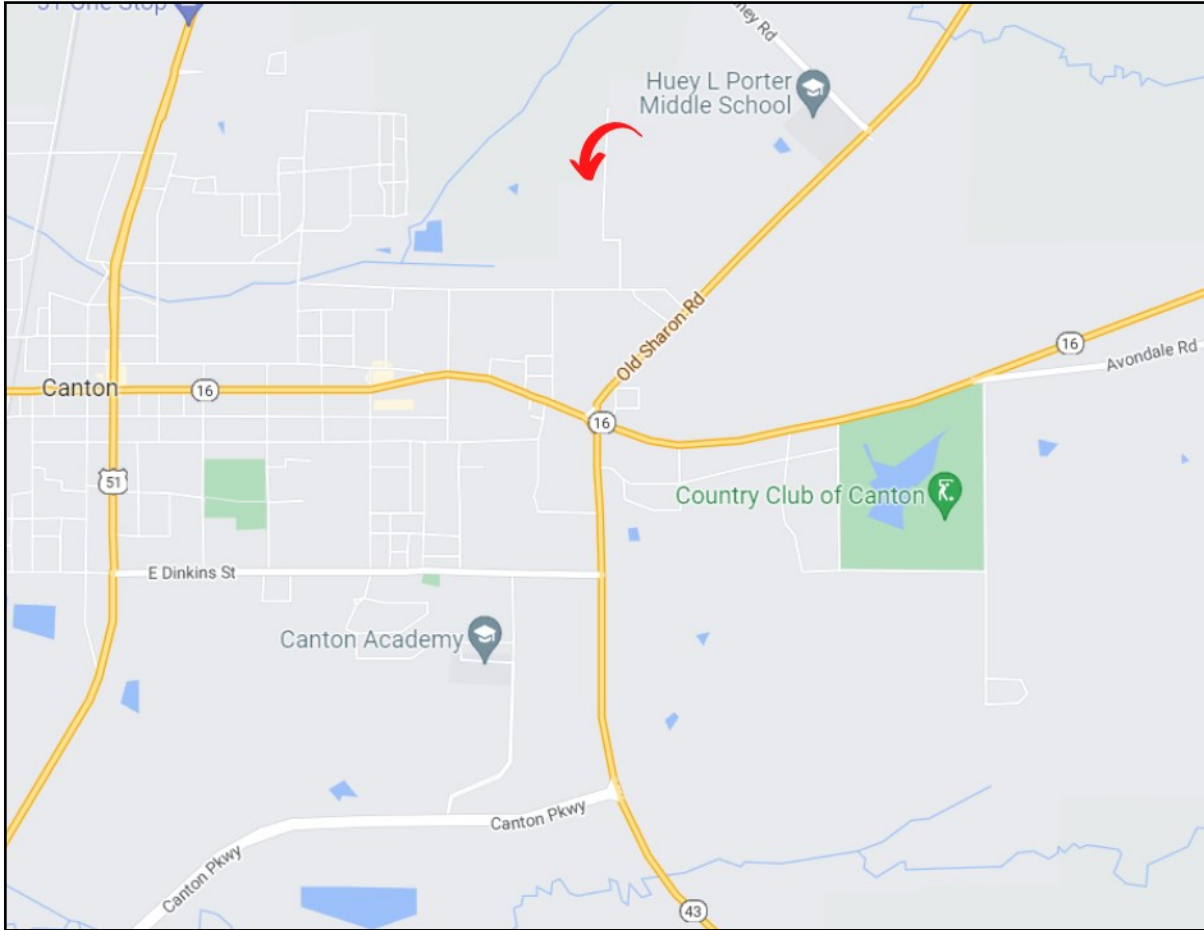
ROBIN ADAMS, REALTOR®
Robin@TomSmithHomes.com
601.898.2772 office | 601.502.3877 cell



TomSmithLandandHomes.com

Information is believed to be accurate but not guaranteed.

DIRECTIONAL MAP



DIRECTIONS FROM I-55 MADISON, MS: Take exit 118A-118B toward Nissan Parkway E. Follow signs for Nissan Parkway E. Merge onto Nissan Parkway and travel 3.9 miles. Turn left onto Hwy 43N. Travel 1.7 miles, and turn left onto Covington Drive. Take the first right onto Commerce Avenue. Travel approximately 1/2 mile and property will be on the left.

550 COMMERCE AVENUE, CANTON MS 39046

Call me today!

ROBIN ADAMS, REALTOR®
Robin@TomSmithHomes.com
601.898.2772 office | 601.502.3877 cell



TomSmithLandandHomes.com

Information is believed to be accurate but not guaranteed.