

DEVELOPMENT OPPORTUNITY

61.0143± Acres in Lafayette County, MS



If you are looking for an outstanding development tract within the city limits of Oxford that has frontage on three roads, is zoned C-2 and R-1 and is priced to sell, look no further!

This 61.043 surveyed acre property has road frontage on CR 101, CR 1032 and CR 181 allowing for multiple access points. The tract currently has approximately 15+/- acres of 24-year-old plantation pine and the remaining 46+/- acres consists of mixed pine and hardwoods.

- OXFORD SCHOOL DISTRICT
- ZONED C-2 AND R-1
- ALL UTILITIES AVAILABLE

\$993,000

DIRECTIONS FROM THE SQUARE IN OXFORD, MS: TRAVEL NORTH LAMAR FOR 1.5 MILES. NORTH LAMAR BECOMES OLD HIGHWAY 7/CR 101 FOR 1.5 MILES. THE ENTRANCE TO THE PROPERTY WILL BE ON THE RIGHT. [GOOGLE MAP LINK](#)



Call the land man today!

TOM SMITH, ALC®, BROKER
Tom@TomSmithLand.com
601.898.2772 **office** | 601.454.9397 **cell**



TomSmithLandandHomes.com

Information is believed to be accurate but not guaranteed.



TOM SMITH, ALC®, BROKER
Tom@TomSmithLand.com
601.898.2772 **office** | 601.454.9397 **cell**



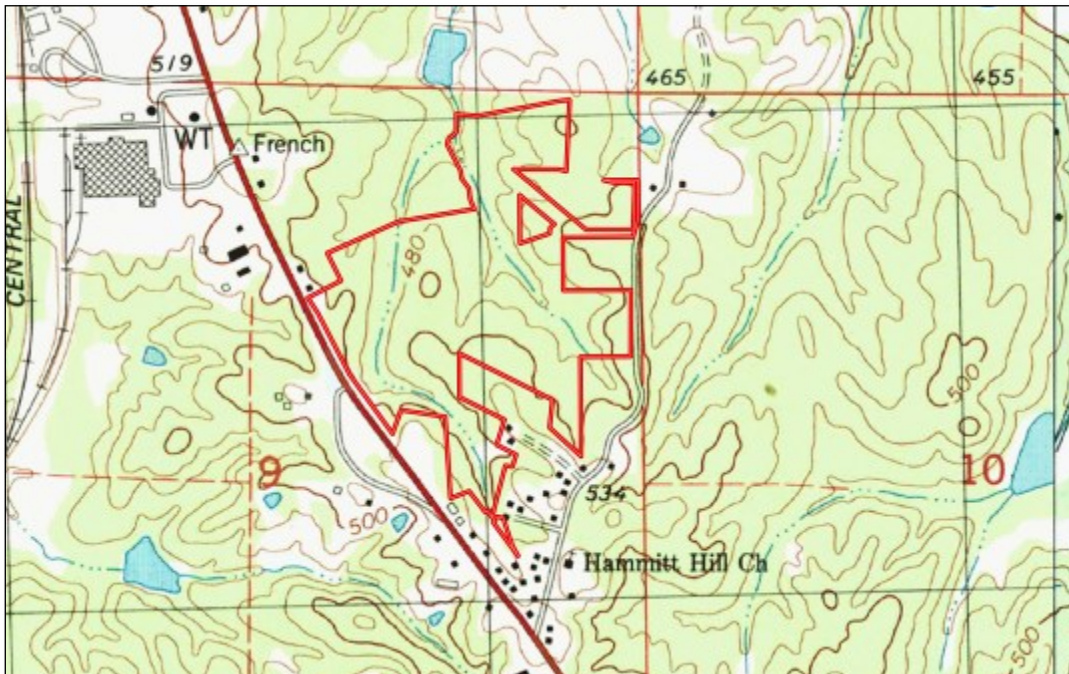
TomSmithLandandHomes.com

Information is believed to be accurate but not guaranteed.



OWNERSHIP MAP

[CLICK HERE FOR AN
INTERACTIVE MAP](#)



TOPO MAP



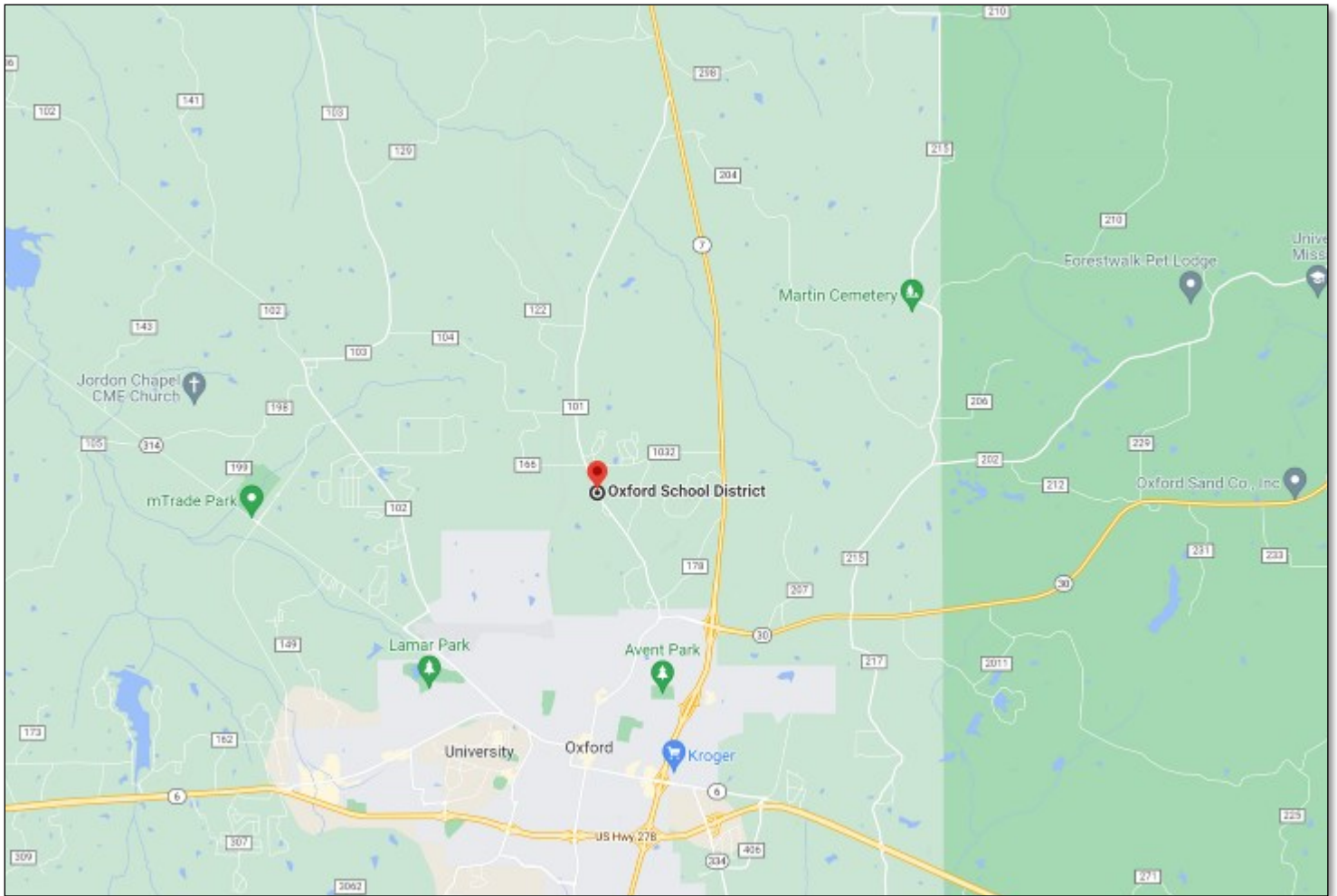
TOM SMITH, ALC®, BROKER
Tom@TomSmithLand.com
601.898.2772 **office** | 601.454.9397 **cell**



TomSmithLandandHomes.com

Information is believed to be accurate but not guaranteed.

DIRECTIONAL MAP



DIRECTIONS FROM THE SQUARE IN OXFORD, MS: TRAVEL NORTH LAMAR FOR 1.5 MILES. NORTH LAMAR BECOMES OLD HIGHWAY 7/CR 101 FOR 1.5 MILES. THE ENTRANCE TO THE PROPERTY WILL BE ON THE RIGHT. [GOOGLE MAP LINK](#)



*Call the
land man
today!*

TOM SMITH, ALC®, BROKER
Tom@TomSmithLand.com
601.898.2772 **office** | 601.454.9397 **cell**



TomSmithLandandHomes.com

Information is believed to be accurate but not guaranteed.