



Attractive Home in Holmes County

Hwy 12 Lexington MS

- 3 Bedrooms and 2 Baths
- Floating Floors
- Laundry Room
- 2 Car Garage

\$99,500



MOTIVATED SELLER...schedule a viewing today!

This Holmes County home is attractive, with adequate space for a growing family. The house is situated on a .91+/- acre lot allowing for gardening to additional structures. And is located in the county near the Owen Wells community. The kitchen is simple but very functional. The laundry room is in a separate area off the bonus room with additional storage space. This area will allow the home to stay tidy. The sun room, with a free standing wood stove for heat, is nice and cozy, allowing you to heat the home with wood and enjoy the atmosphere. All bedrooms are together, connected with a hall and common full bath. The master bedroom has a separate full bath. All three bedrooms are average size, with the master being the largest. The double garage, with an automated garage door, offers additional security. Contact Sam Sample to schedule a showing.

Directions:

From the square in Lexington MS, travel Hwy 12 east toward I-55 for 4.7 miles and the property will be on your left at 26187 Hwy 12 Lexington MS. GPS: 33.101, -89.9751



Call me today!

SAM SAMPLE, REALTOR®
Sam@TomSmithLand.com
601.898.2772 office | 601.668.5697 cell



TomSmithLandandHomes.com

Information is believed to be accurate but not guaranteed.



Call me today!

SAM SAMPLE, REALTOR®
Sam@TomSmithLand.com
601.898.2772 office | 601.668.5697 cell



Expect More. Get More.



TomSmithLandandHomes.com

Information is believed to be accurate but not guaranteed.



Call me today!

SAM SAMPLE, REALTOR®
 Sam@TomSmithLand.com
 601.898.2772 office | 601.668.5697 cell

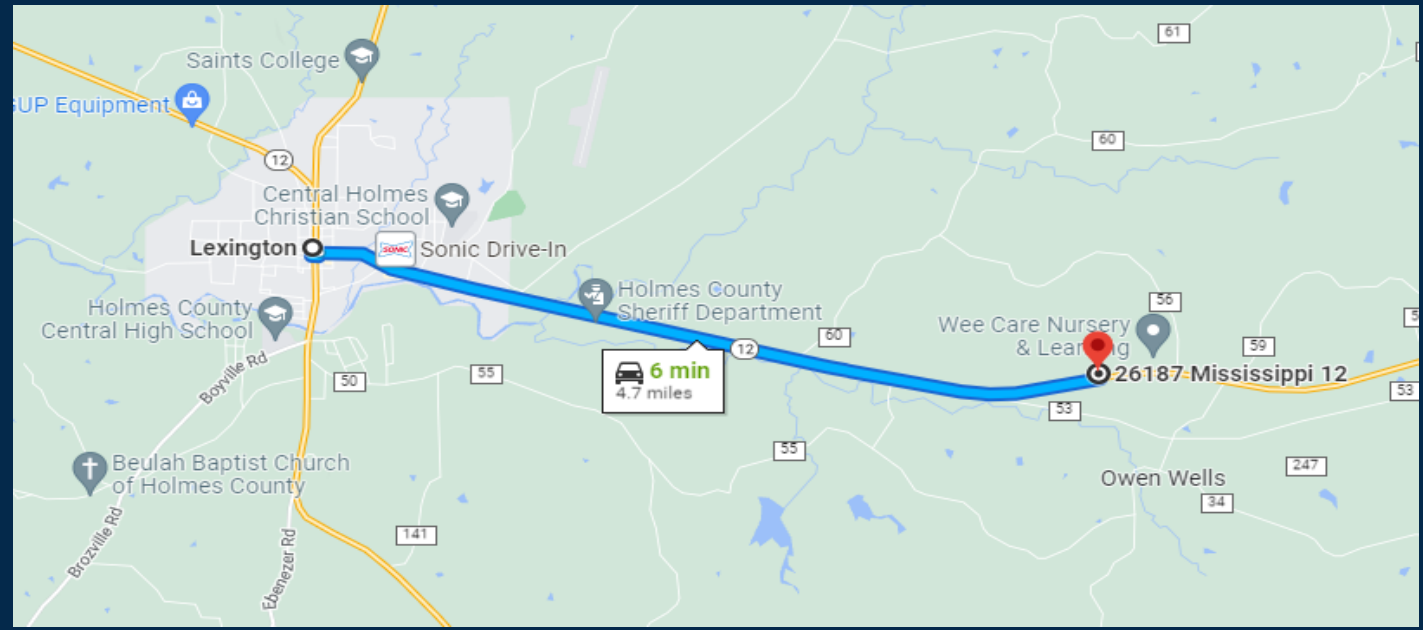
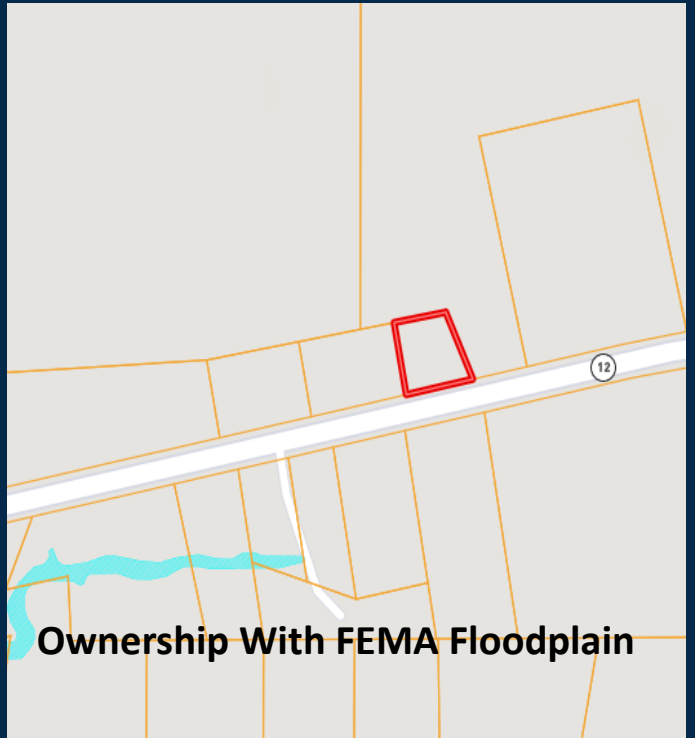
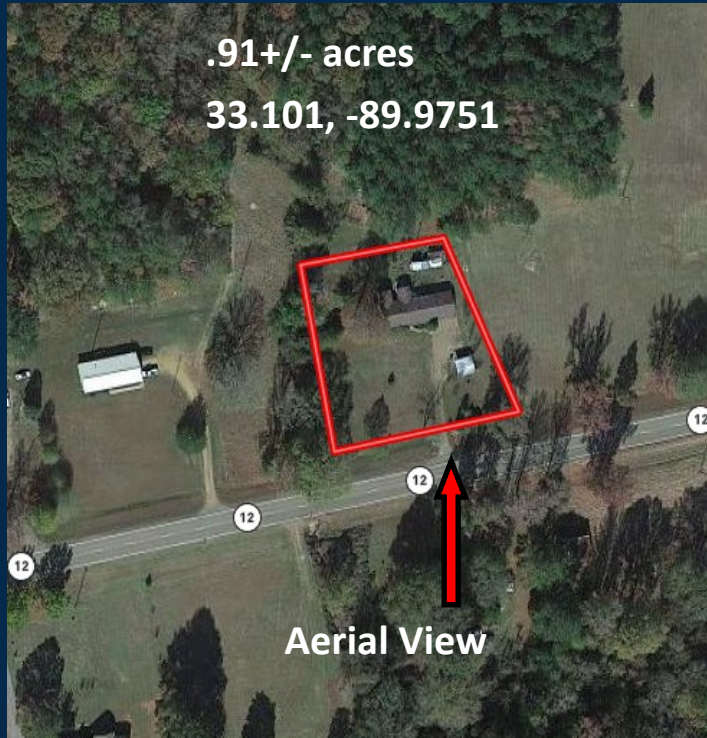


Expect More. Get More.



TomSmithLandandHomes.com

Information is believed to be accurate but not guaranteed.



Directions: From the square in Lexington MS, travel Hwy 12 east toward I-55 for 4.7 miles and the property will be on your left at 26187 Hwy 12 Lexington MS. GPS: 33.101, -89.9751

Call me today!

SAM SAMPLE, REALTOR®
Sam@TomSmithLand.com
601.898.2772 office | 601.668.5697 cell



TomSmithLandandHomes.com

Information is believed to be accurate but not guaranteed.