



130 HUBER STREET, MADISON, MS STILLHOUSE CREEK SUBDIVISION



\$384,500

130 Huber Street, Madison, MS , 39110

A beautiful, four bedroom, three bath home with 2,303 +/- sq ft located in the sought-after Stillhouse Creek subdivision in Madison County. Nestled on a huge lot that is fully fenced and professionally landscaped shaded by hardwood trees! As you enter the foyer, which is large enough to handle a piano, you look to your right and see the spacious formal dining room. Look down and admire the beautiful pine flooring. (There is no carpet in the home.) The family room is open to the kitchen and overlooks the covered patio, with a ceiling fan. There is a gas line for a heater or grill off the patio. In the kitchen, the first thing to catch your eye is the huge 6 burner Jenn Air range and custom vent hood. The porcelain and iron sink is oversized and sits beautifully in the granite. In addition to the breakfast bar, there is a prep island, also topped with granite. There are glass doors in the kitchen cabinets to display your china, crystal, etc. The master suite is very spacious, with pine floors and a luxurious bath with "L" shaped vanities. The laundry room is off the garage hall and comes complete with a utility sink. Upstairs, you'll find a large bedroom/bonus room, also with pine flooring, as well as a full bath and closet. Contact Clay today to schedule your showing!

Directions from Gluckstadt, MS: Coming from Madison heading North on I-55. Take exit 112 towards Gluckstadt. Turn left onto Gluckstadt Rd. Drive 1.8 miles onto Catlett Rd. Turn right into



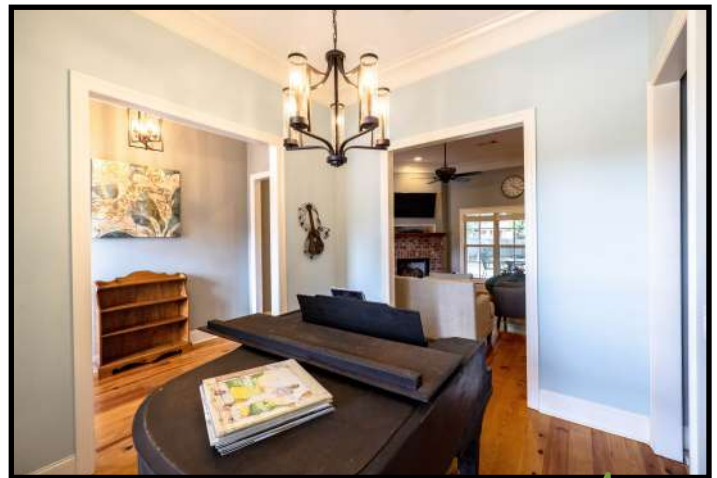
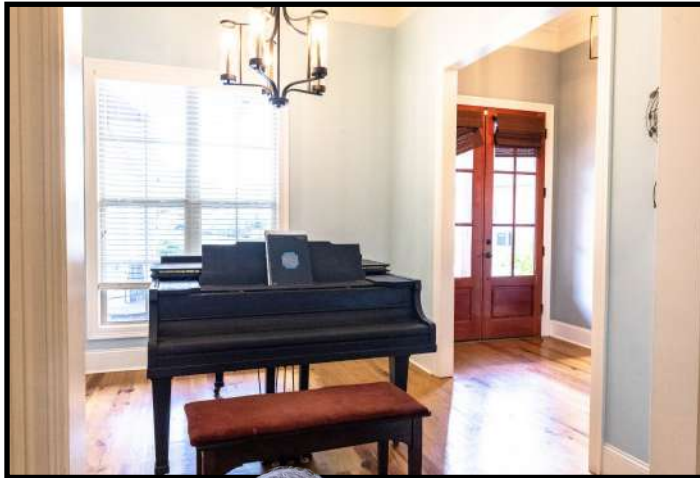
Call me today!

CLAY SIMMONS, REALTOR®
Clay@TomSmithHomes.com
601.898.2772 **office** | 601.672.6864 **cell**



TomSmithLandandHomes.com

Information is believed to be accurate but not guaranteed.



Call me today!

CLAY SIMMONS, REALTOR®
 Clay@TomSmithHomes.com
 601.898.2772 office | 601.672.6864 cell



TomSmithLandandHomes.com

Information is believed to be accurate but not guaranteed.



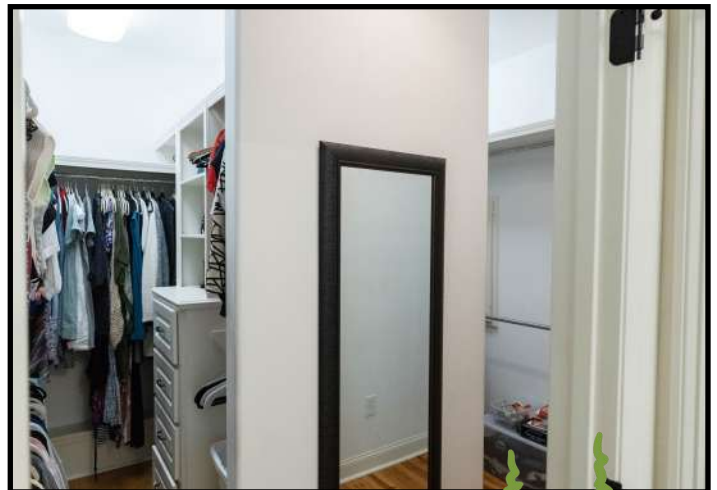
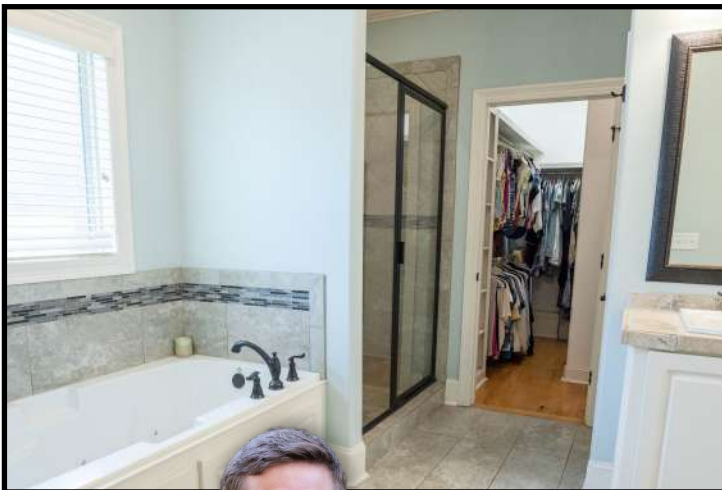
Call me today!

CLAY SIMMONS, REALTOR®
 Clay@TomSmithHomes.com
 601.898.2772 office | 601.672.6864 cell



TomSmithLandandHomes.com

Information is believed to be accurate but not guaranteed.



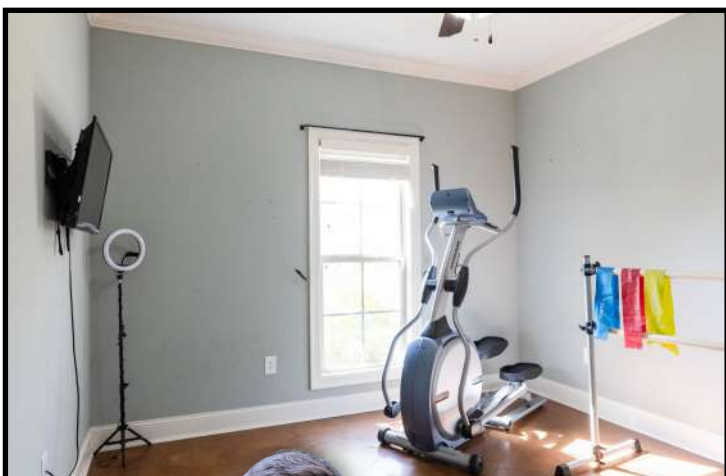
Call me today!

CLAY SIMMONS, REALTOR®
 Clay@TomSmithHomes.com
 601.898.2772 **office** | 601.672.6864 **cell**



TomSmithLandandHomes.com

Information is believed to be accurate but not guaranteed.



Call me today!

CLAY SIMMONS, REALTOR®
 Clay@TomSmithHomes.com
 601.898.2772 office | 601.672.6864 cell



TomSmithLandandHomes.com

Information is believed to be accurate but not guaranteed.



LandReport
2011-2022
AMERICA'S
BEST
BROKERAGES

Call me today!

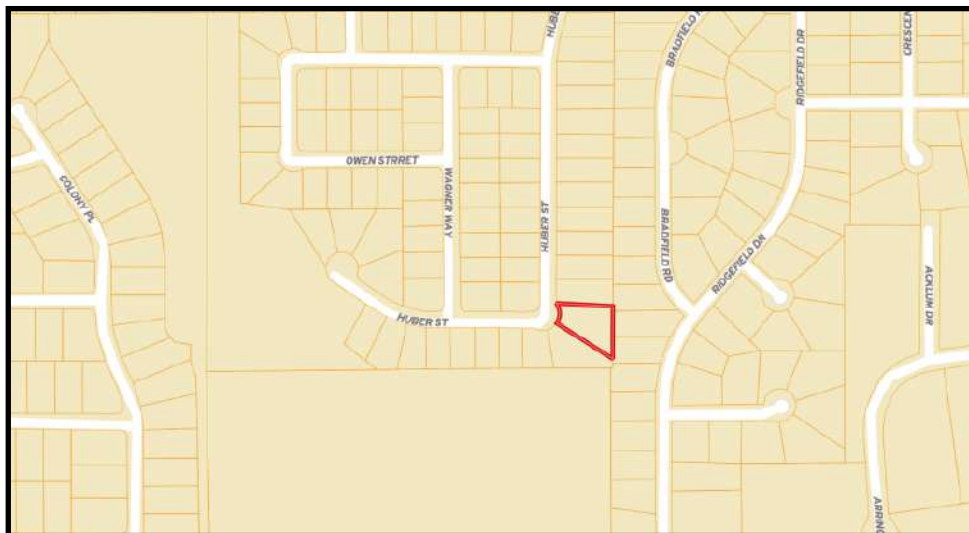
CLAY SIMMONS, REALTOR®
Clay@TomSmithHomes.com
601.898.2772 **office** | 601.672.6864 **cell**



TomSmithLandandHomes.com

Information is believed to be accurate but not guaranteed.

AERIAL MAP



OWNERSHIP MAP

INTERACTIVE MAP

[CLICK HERE](#)



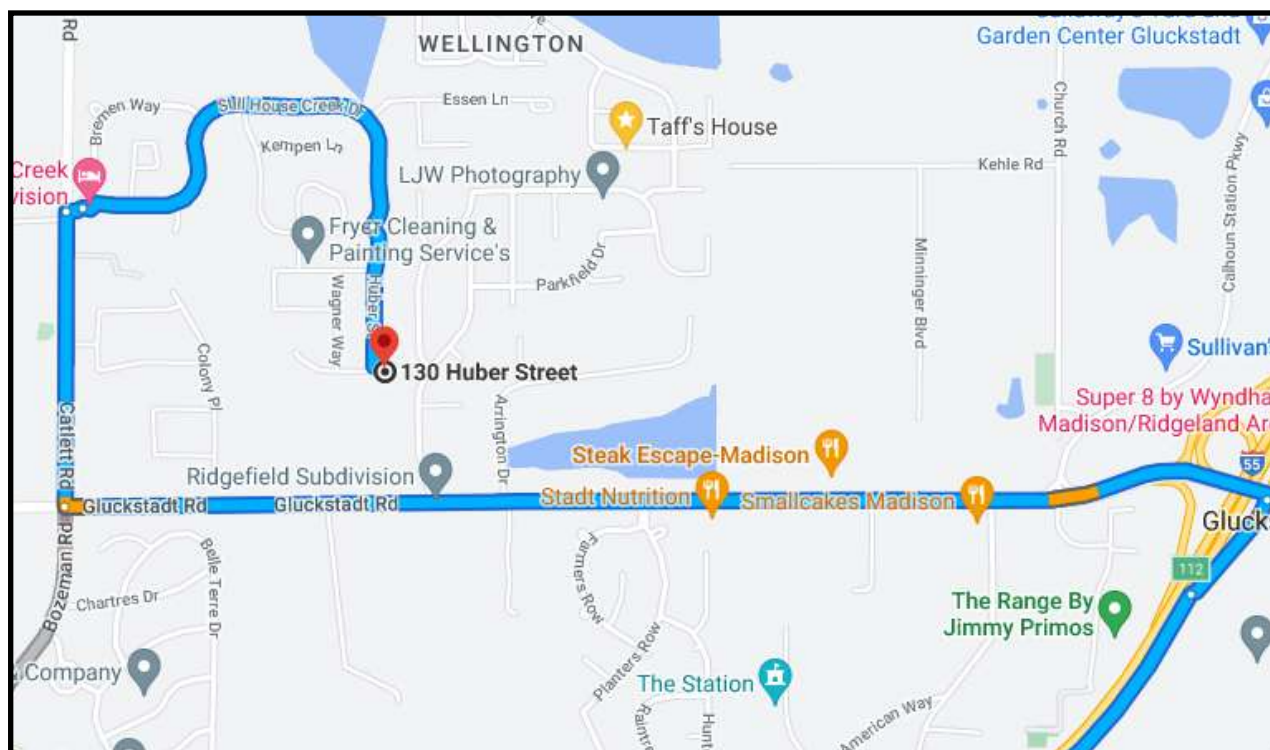
Call me today!

CLAY SIMMONS, REALTOR®
Clay@TomSmithHomes.com
601.898.2772 **office** | 601.672.6864 **cell**



TomSmithLandandHomes.com

Information is believed to be accurate but not guaranteed.



DIRECTIONAL MAP



130 Huber Street, Madison, MS 39011

Directions from Gluckstadt MS: Coming from Madison heading North on I-55. Take exit 112 towards Gluckstadt. Turn left onto Gluckstadt Rd. Drive 1.8 miles onto Catlett Rd. Turn right into Stillhouse Creek and follow Stillhouse Creek Dr around to Huber St. Home on the left.



Call me today!

CLAY SIMMONS, REALTOR®
 Clay@TomSmithHomes.com
 601.898.2772 **office** | 601.672.6864 **cell**



TomSmithLandandHomes.com

Information is believed to be accurate but not guaranteed.