

# HOME ON 6.6± ACRES IN PIKE COUNTY, MS



**\$214,000**

**2002 SHERWOOD DR, MCCOMB, MS**

This 2,000± square foot, three bedroom, two bath home on 6± acres is located in McComb, MS, in Pike County. It is located in the highly coveted North Pike School District and is conveniently located just 15± minutes from the amenities of McComb, MS. The large front porch provides excellent views of your secluded country acreage and would make for an amazing relaxation space. The spacious home also includes a wood burning fireplace for those cold winter nights. The property also features two additional septic tanks and utility poles aside from the home, providing spaces to park RVs or campers. The property also features a 12x60 tractor shed for storage or a great area for a workshop. Don't wait! Call Tara Walker Smith at 601.407.4315 today!

*Directions from the intersection of US-98 and US-51 in McComb, MS: Travel east on US-98/Presley Blvd, turn left onto McComb Holmesville Rd, in 4.6 miles, turn right onto Sherwood Dr, in .4 miles, turn right onto Robinwood Cir, in .3 miles, turn right onto Sherwood Dr, in 430 feet, the property will be on the right.*

*Address: 2002 Sherwood Dr, McComb, MS 39648*



*Call me today!*

**TARA WALKER SMITH, REALTOR®**  
Tara@TomSmithHomes.com  
601.990.5070 **office** | 601.407.4315 **cell**



Expect More. Get More.

**TomSmithLandandHomes.com**

Information is believed to be accurate but not guaranteed.





*Call me today!*

**TARA WALKER SMITH, REALTOR®**  
Tara@TomSmithHomes.com  
601.990.5070 **office** | 601.407.4315 **cell**



**TomSmithLandandHomes.com**

Information is believed to be accurate but not guaranteed.





*Call me today!*

**TARA WALKER SMITH, REALTOR®**  
 Tara@TomSmithHomes.com  
 601.990.5070 **office** | 601.407.4315 **cell**

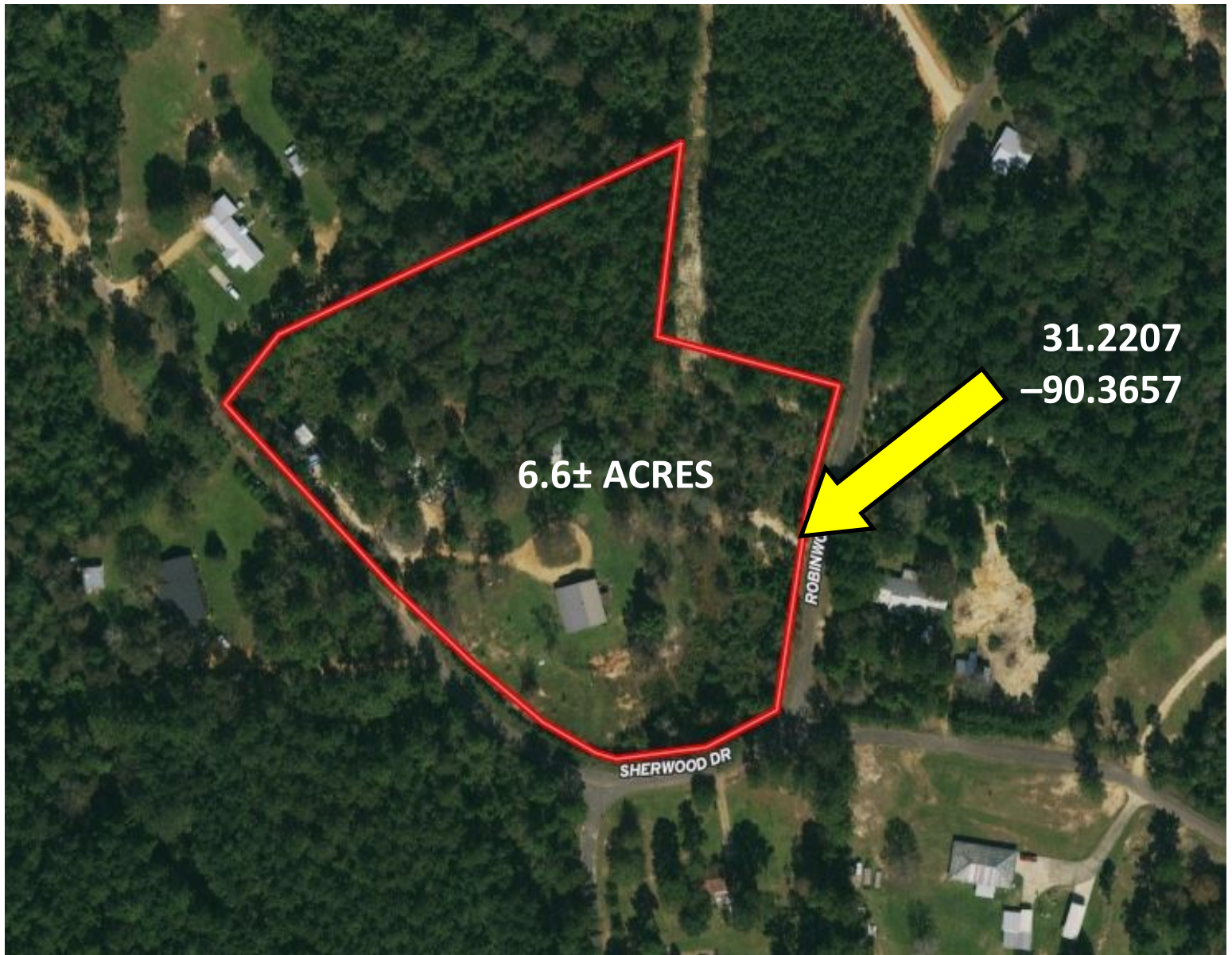


**TomSmithLandandHomes.com**

Information is believed to be accurate but not guaranteed.



# Aerial Map



[INTERACTIVE MAP LINK](#)

*Call me today!*

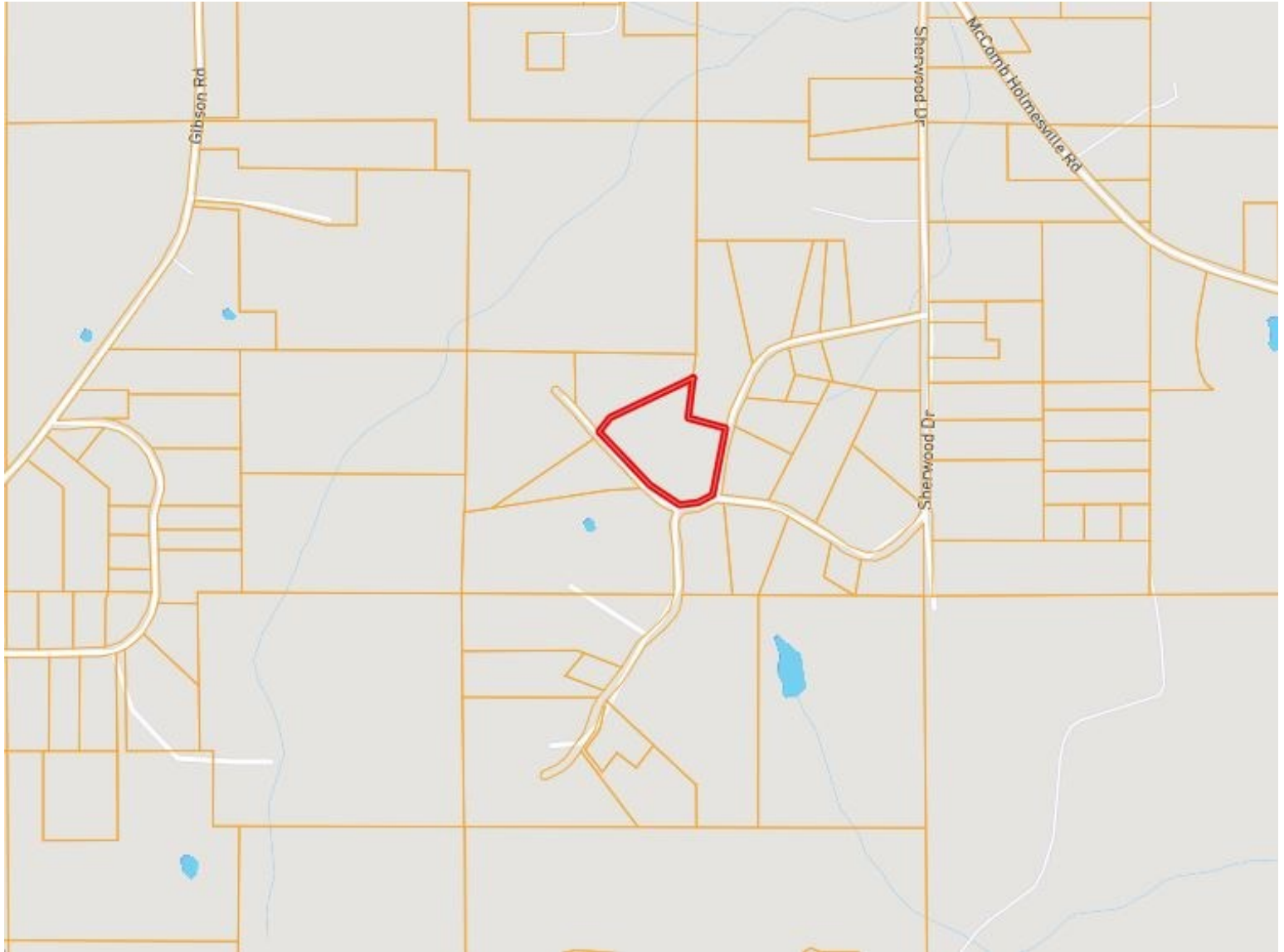
**TARA WALKER SMITH, REALTOR®**  
Tara@TomSmithHomes.com  
601.990.5070 **office** | 601.407.4315 **cell**



**TomSmithLandandHomes.com**

Information is believed to be accurate but not guaranteed.

# Ownership Map



*Call me today!*

**TARA WALKER SMITH, REALTOR®**  
Tara@TomSmithHomes.com  
601.990.5070 **office** | 601.407.4315 **cell**



**TomSmithLandandHomes.com**

Information is believed to be accurate but not guaranteed.



# Topo Map



*Call me today!*

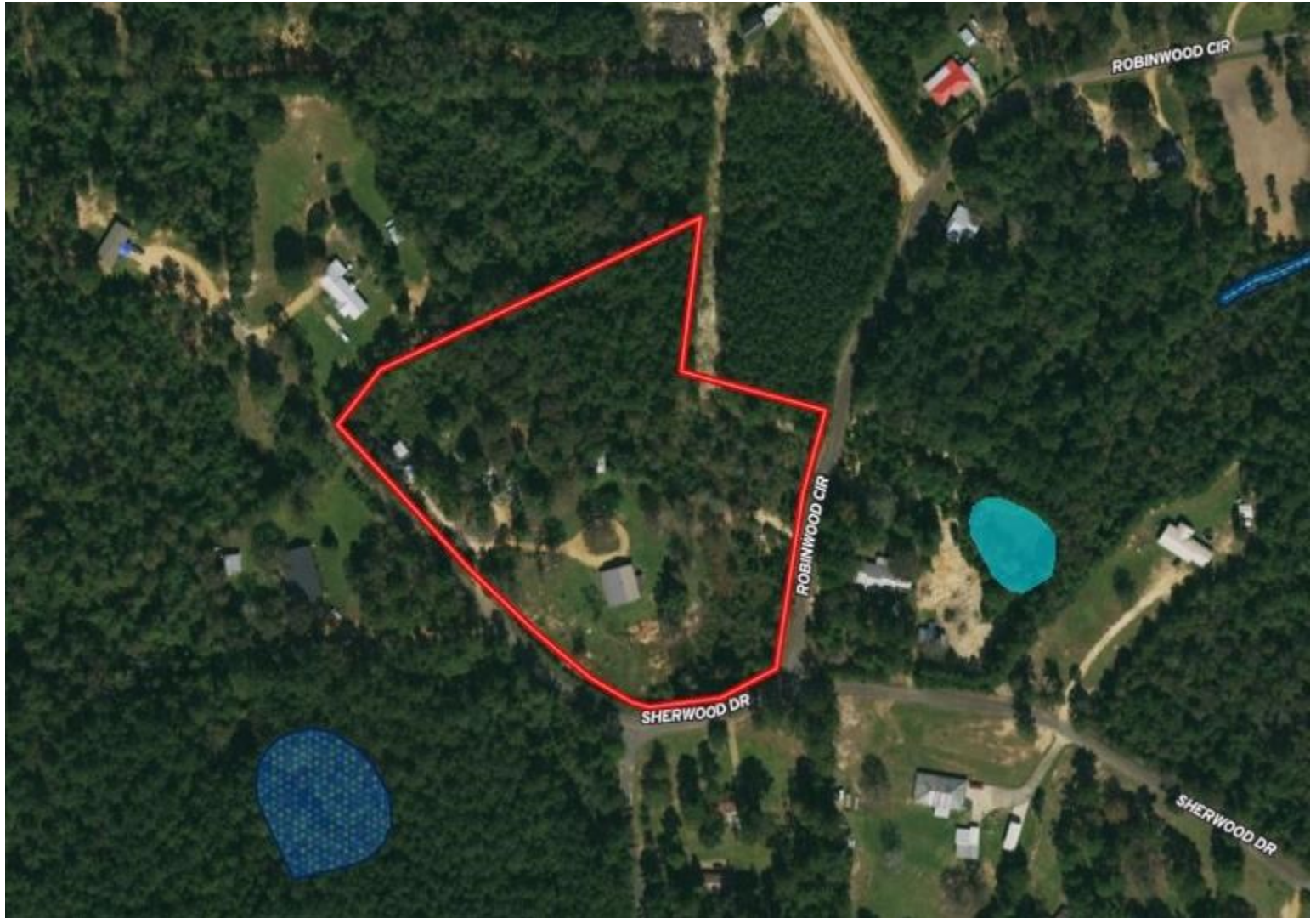
**TARA WALKER SMITH, REALTOR®**  
Tara@TomSmithHomes.com  
601.990.5070 **office** | 601.407.4315 **cell**



**TomSmithLandandHomes.com**

Information is believed to be accurate but not guaranteed.

# Flood Map



*Call me today!*

**TARA WALKER SMITH, REALTOR®**  
Tara@TomSmithHomes.com  
601.990.5070 **office** | 601.407.4315 **cell**



**TomSmithLandandHomes.com**

Information is believed to be accurate but not guaranteed.



# Soil Map



*Call me today!*

**TARA WALKER SMITH, REALTOR®**  
Tara@TomSmithHomes.com  
601.990.5070 **office** | 601.407.4315 **cell**

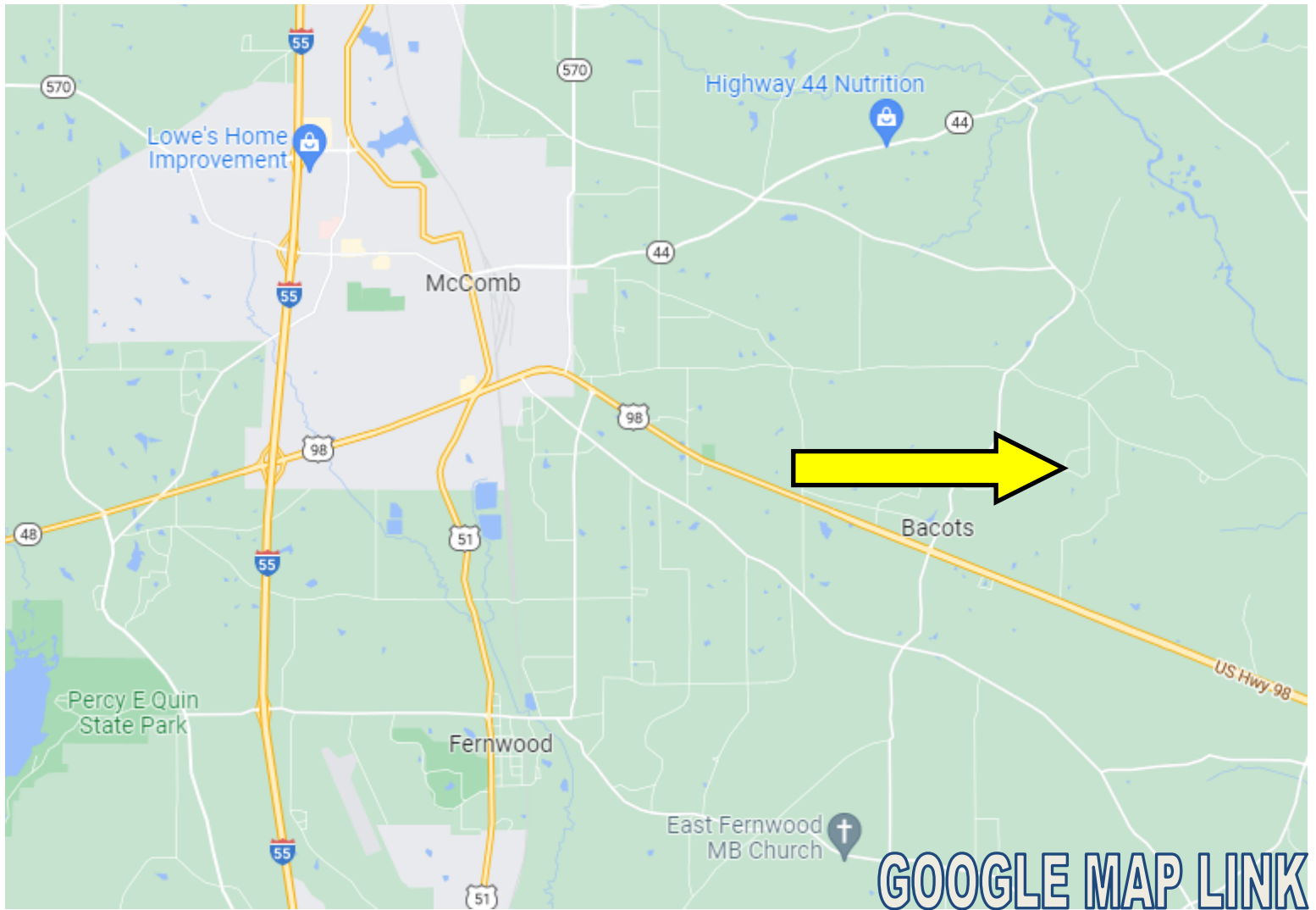


**TomSmithLandandHomes.com**

Information is believed to be accurate but not guaranteed.



# Directional Map



Directions from the intersection of US-98 and US-51 in McComb, MS: Travel east on US-98/Presley Blvd, turn left onto McComb Holmesville Rd, in 4.6 miles, turn right onto Sherwood Dr, in .4 miles, turn right onto Robinwood Cir, in .3 miles, turn right onto Sherwood Dr, in 430 feet, the property will be on the right. Address: 2002 Sherwood Dr, McComb, MS 39648

*Call me today!*

**TARA WALKER SMITH, REALTOR®**  
Tara@TomSmithHomes.com  
601.990.5070 **office** | 601.407.4315 **cell**



**TomSmithLandandHomes.com**

Information is believed to be accurate but not guaranteed.