

# Hunting / Pasture Tract

## 175 +/- Acres in Kemper County, MS

**\$425,000**

Here is a 175+/- acre tract of land in Kemper County, MS, that has a lot to offer. This property features 42+/- acres of pasture-land with a pole barn and 133+/- acres of mixed timber with multiple points of access from road frontage on West Zion Road and Zion Hampton Road. There are trails throughout the property and many potential food plot locations. Utilities are available close by, and many possible home sites throughout the property. This property could easily be turned into a fine hunting camp or farm! To schedule a private showing call or text Walker!

**Directions from Philadelphia MS:** From Main Street in Philadelphia, head east onto MS-21 / Columbus Avenue toward Morrow Street. Then after 269 feet, bear right onto Morrow Street. After .2 miles, turn right onto Crockett Avenue. Then in .3 miles, turn left onto Myrtle Street East. Then after 472 feet, turn right onto Evergreen Avenue. Then after .3 miles, turn left onto MS-16 / East Main Street. Then after 10.8 miles, bear right onto MS-486 / Golf Course Road. Then after 5.1 miles, keep straight onto MS-491. After 1 mile, bear left onto County Road 4316 and after 1.3 miles, the road name changes to West Zion Road. The property will be on your right.



*Call me today!*

**WALKER TRANUM, REALTOR®**  
Walker@TomSmithHomes.com  
662.268.6333 office | 662.769.1442 cell



**TomSmithLandandHomes.com**

Information is believed to be accurate but not guaranteed.



*Call me today!*

**WALKER TRANUM, REALTOR®**  
Walker@TomSmithHomes.com  
662.268.6333 office | 662.769.1442 cell



LandReport  
2011-2022  
AMERICA'S  
**BEST**  
BROKERAGES

**TomSmithLandandHomes.com**

Information is believed to be accurate but not guaranteed.



*Call me today!*

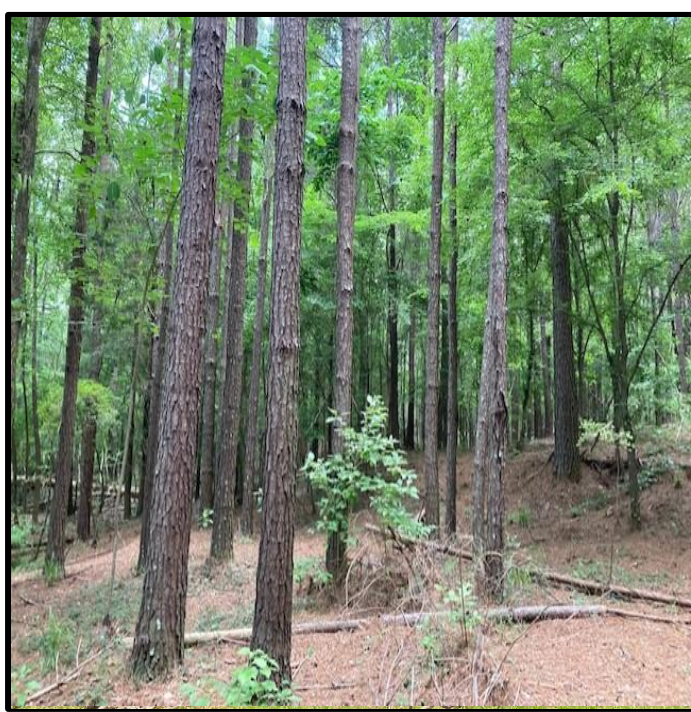
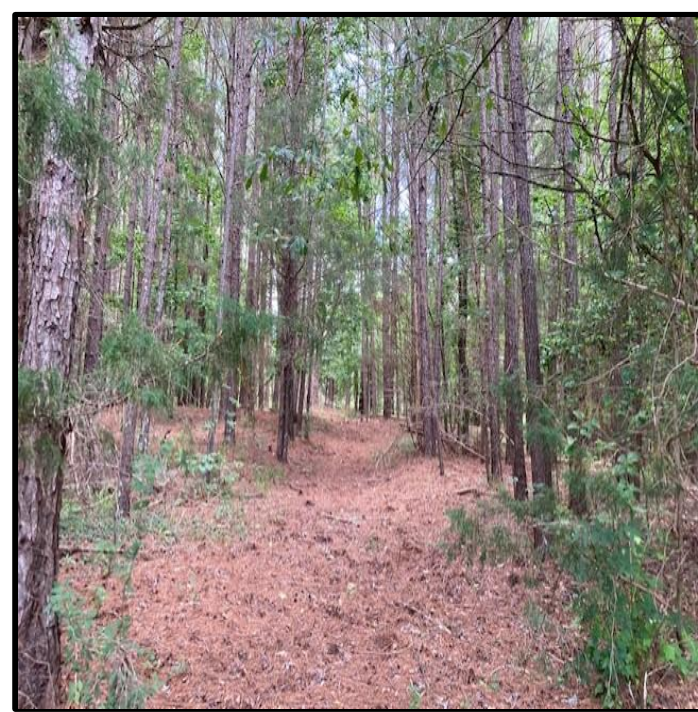
**WALKER TRANUM**, REALTOR®  
Walker@TomSmithHomes.com  
662.268.6333 office | 662.769.1442 cell



LandReport  
2011-2022  
AMERICA'S  
BEST  
BROKERAGES

**TomSmithLandandHomes.com**

Information is believed to be accurate but not guaranteed.



*Call me today!*

**WALKER TRANUM**, REALTOR®  
Walker@TomSmithHomes.com  
662.268.6333 office | 662.769.1442 cell



**TomSmithLandandHomes.com**

Information is believed to be accurate but not guaranteed.

LandReport  
2011-2022  
AMERICA'S  
BEST  
BROKERAGES



*Call me today!*

**WALKER TRANUM, REALTOR®**  
Walker@TomSmithHomes.com  
662.268.6333 office | 662.769.1442 cell



**TomSmithLandandHomes.com**

Information is believed to be accurate but not guaranteed.

LandReport  
2011-2022  
AMERICA'S  
BEST  
BROKERAGES

# Aerial Map

[Click Here For  
Interactive Link](#)

32.6178,  
-88.8988

175+/-  
Acres



*Call me today!*

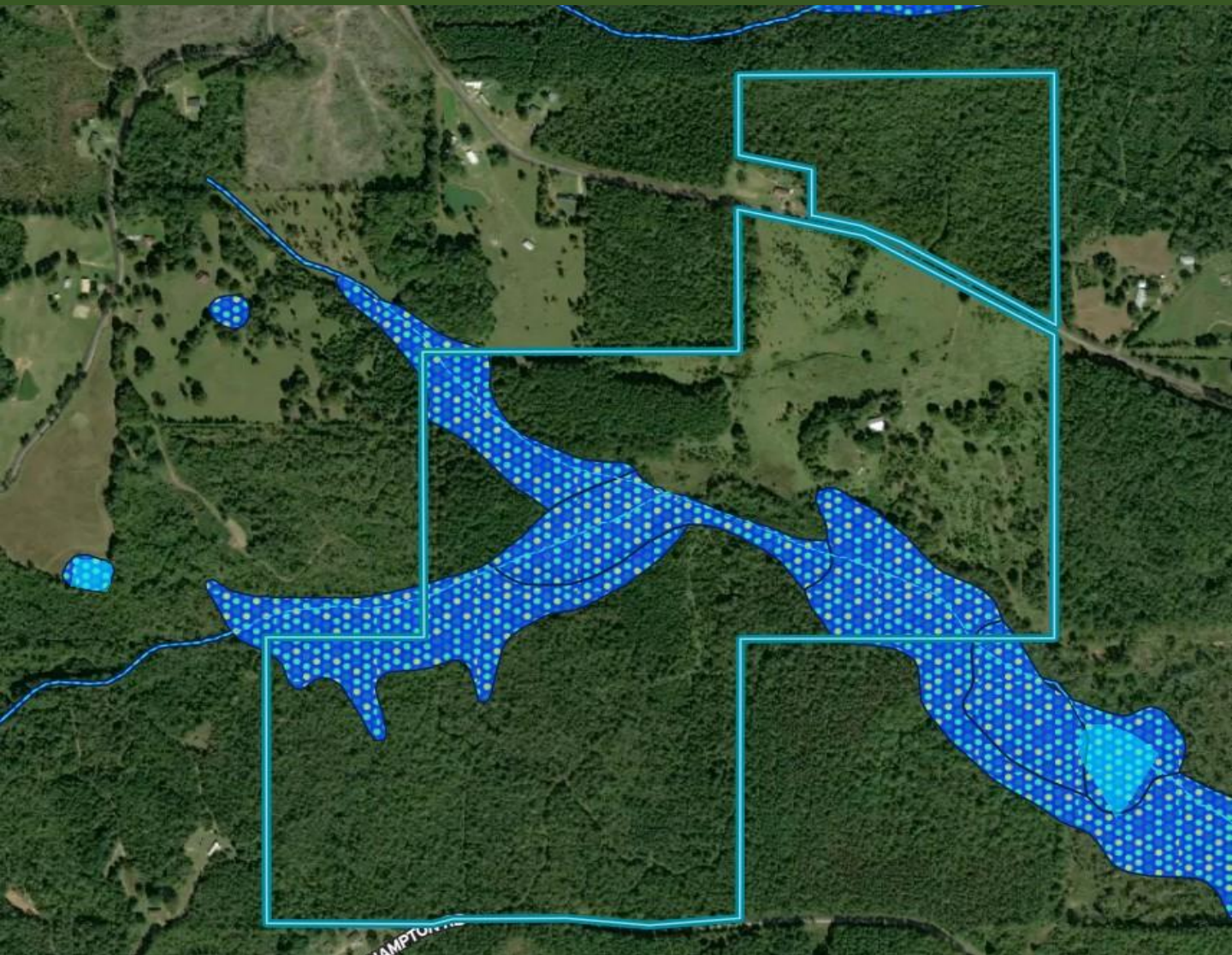
**WALKER TRANUM**, REALTOR®  
Walker@TomSmithHomes.com  
662.268.6333 office | 662.769.1442 cell



**TomSmithLandandHomes.com**

Information is believed to be accurate but not guaranteed.

# Flood Map



*Call me today!*

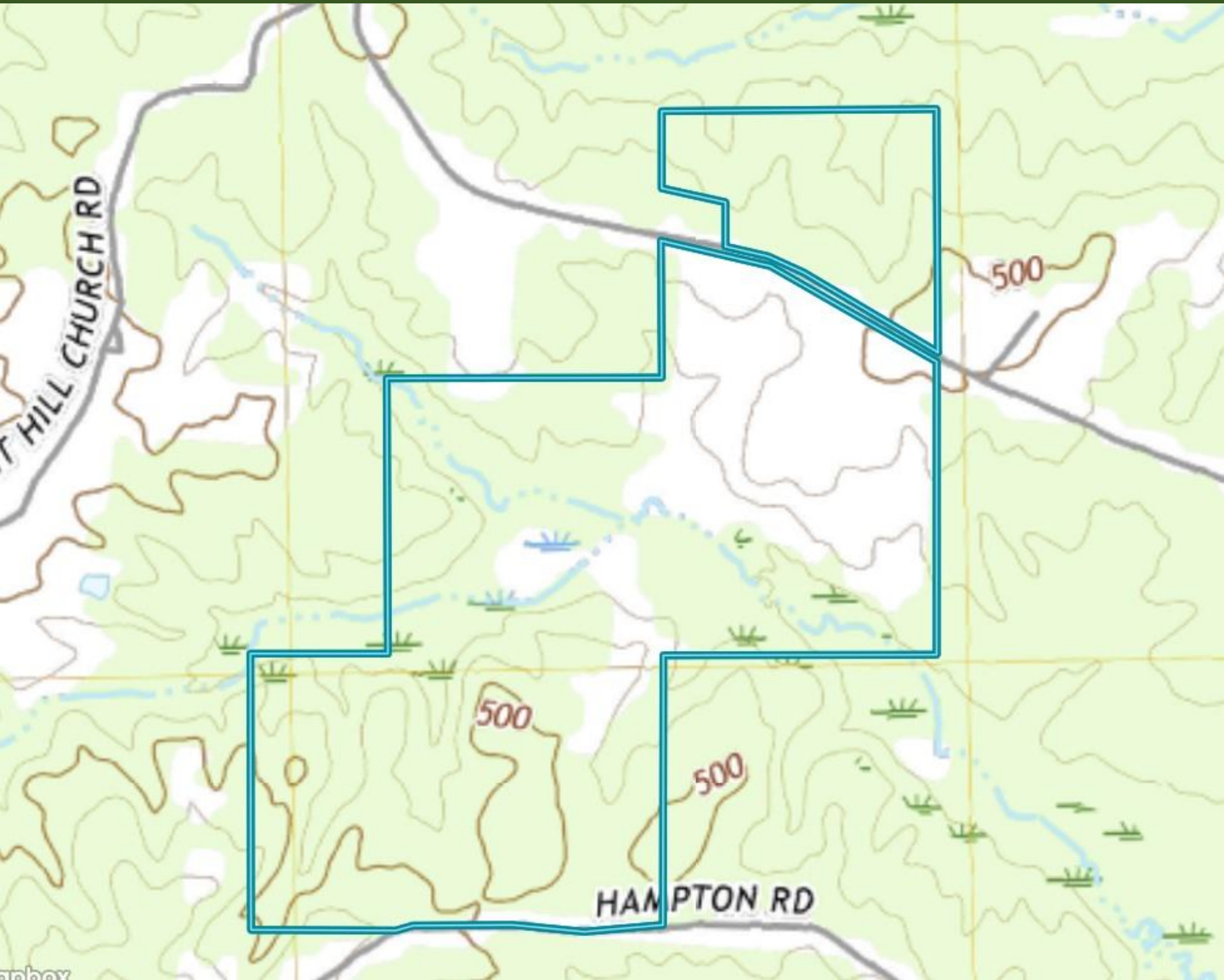
**WALKER TRANUM, REALTOR®**  
Walker@TomSmithHomes.com  
662.268.6333 office | 662.769.1442 cell



**TomSmithLandandHomes.com**

Information is believed to be accurate but not guaranteed.

# Topography Map



*Call me today!*

**WALKER TRANUM, REALTOR®**  
Walker@TomSmithHomes.com  
662.268.6333 office | 662.769.1442 cell

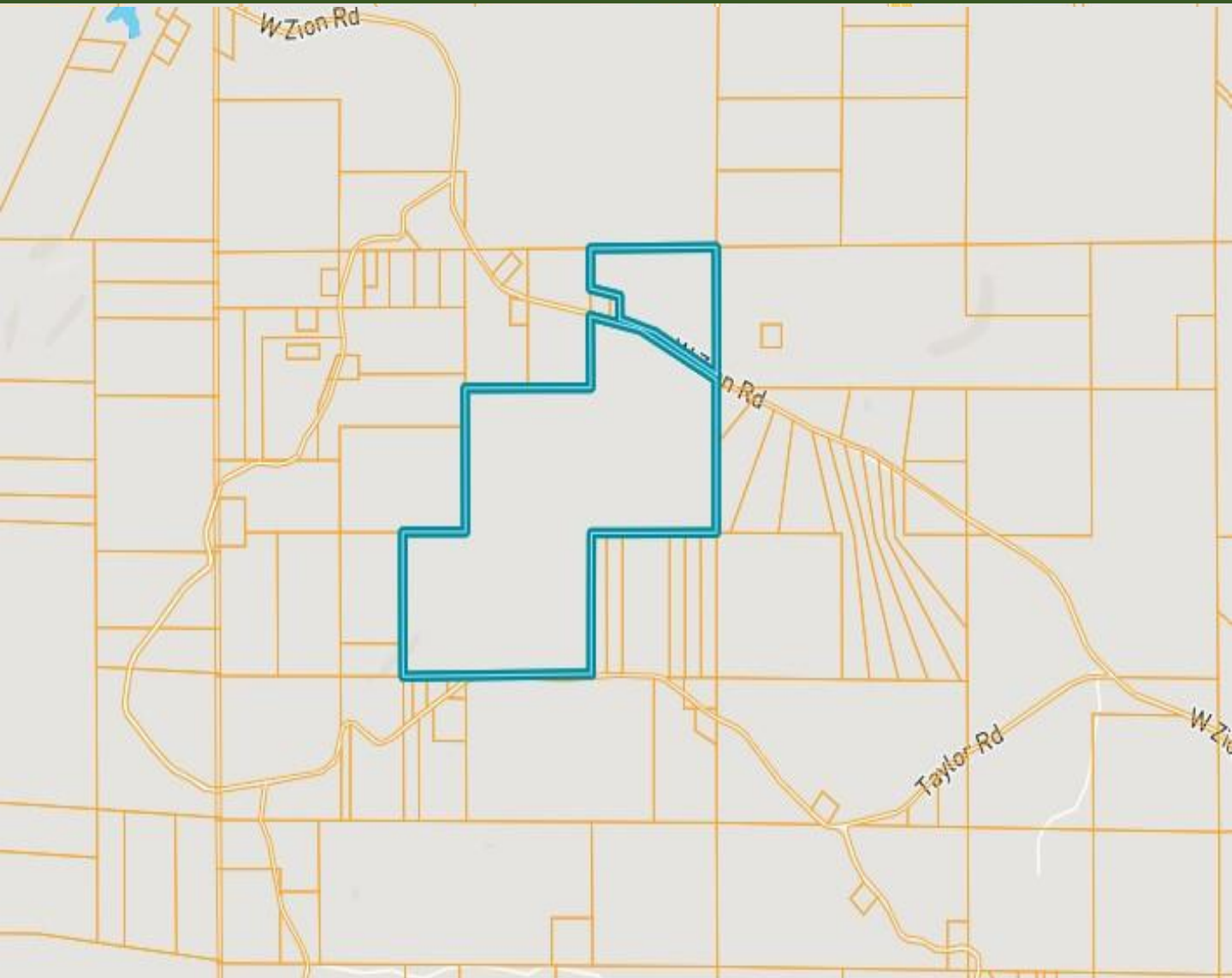


**TomSmithLandandHomes.com**

Information is believed to be accurate but not guaranteed.



# Ownership Map



*Call me today!*

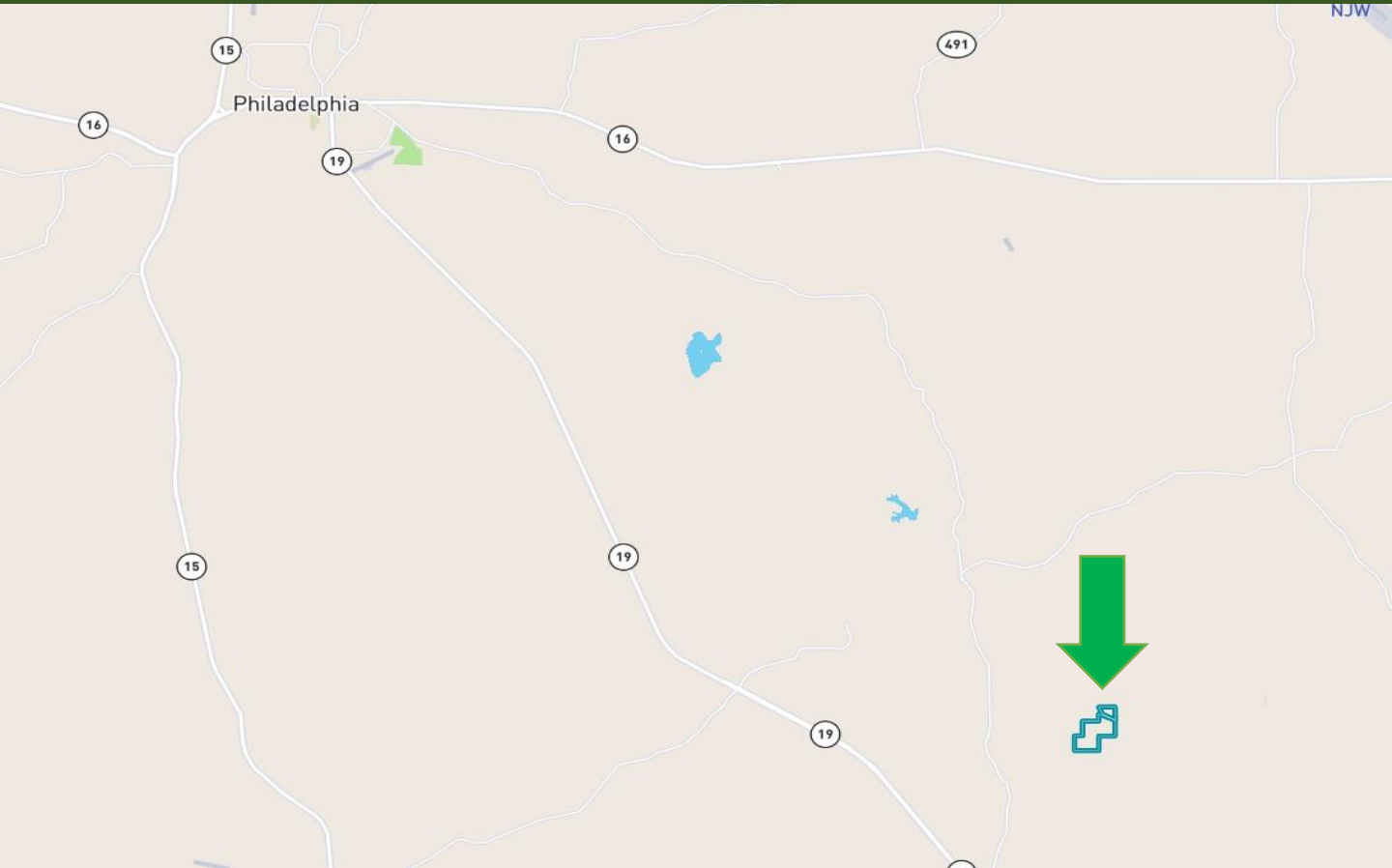
**WALKER TRANUM**, REALTOR®  
Walker@TomSmithHomes.com  
662.268.6333 office | 662.769.1442 cell



**TomSmithLandandHomes.com**

Information is believed to be accurate but not guaranteed.

# Directional Map



**Directions from Philadelphia MS:** From Main Street in Philadelphia, head east onto MS-21 / Columbus Avenue toward Morrow Street. Then after 269 feet, bear right onto Morrow Street. After .2 miles, turn right onto Crockett Avenue. Then in .3 miles, turn left onto Myrtle Street East. Then after 472 feet, turn right onto Evergreen Avenue. Then after .3 miles, turn left onto MS-16 / East Main Street. Then after 10.8 miles, bear right onto MS-486 / Golf Course Road. Then after 5.1 miles, keep straight onto MS-491. After 1 mile, bear left onto County Road 4316 and after 1.3 miles, the road name changes to West Zion Road. The property will be on your right.



*Call me today!*

**WALKER TRANUM**, REALTOR®  
Walker@TomSmithHomes.com  
662.268.6333 office | 662.769.1442 cell



**TomSmithLandandHomes.com**

Information is believed to be accurate but not guaranteed.