

Hunting / Pasture Tract

175 +/- Acres in Kemper County, MS



\$385,000

Here is a 175+/- acre tract of land in Kemper County, MS, that has a lot to offer. This property features 42+/- acres of pasture-land with a pole barn and 133+/- acres of mixed timber with multiple points of access from road frontage on West Zion Road and Zion Hampton Road. There are trails throughout the property and many potential food plot locations. Utilities are available close by, and many possible home sites throughout the property. This property could easily be turned into a fine hunting camp or farm! To schedule a private showing call or text Walker!

Directions from Philadelphia MS: From Main Street in Philadelphia, head east onto MS-21 / Columbus Avenue toward Morrow Street. Then after 269 feet, bear right onto Morrow Street. After .2 miles, turn right onto Crockett Avenue. Then in .3 miles, turn left onto Myrtle Street East. Then after 472 feet, turn right onto Evergreen Avenue. Then after .3 miles, turn left onto MS-16 / East Main Street. Then after 10.8 miles, bear right onto MS-486 / Golf Course Road. Then after 5.1 miles, keep straight onto MS-491. After 1 mile, bear left onto County Road 4316 and after 1.3 miles, the road name changes to West Zion Road. The property will be on your right.



Call me today!

WALKER TRANUM, REALTOR®
Walker@TomSmithHomes.com
662.268.6333 **office** | 662.769.1442 **cell**



TomSmithLandandHomes.com

Information is believed to be accurate but not guaranteed.



Call me today!

WALKER TRANUM, REALTOR®
Walker@TomSmithHomes.com
662.268.6333 office | 662.769.1442 cell



TomSmithLandandHomes.com

Information is believed to be accurate but not guaranteed.



Call me today!

WALKER TRANUM, REALTOR®
 Walker@TomSmithHomes.com
 662.268.6333 office | 662.769.1442 cell



TomSmithLandandHomes.com

Information is believed to be accurate but not guaranteed.



Call me today!

WALKER TRANUM, REALTOR®
Walker@TomSmithHomes.com
662.268.6333 office | 662.769.1442 cell



TomSmithLandandHomes.com

Information is believed to be accurate but not guaranteed.



Call me today!

WALKER TRANUM, REALTOR®
Walker@TomSmithHomes.com
662.268.6333 office | 662.769.1442 cell



TomSmithLandandHomes.com

Information is believed to be accurate but not guaranteed.

Aerial Map

[Click Here For
Interactive Link](#)

32.6178,
-88.8988

175+/-
Acres



Call me today!

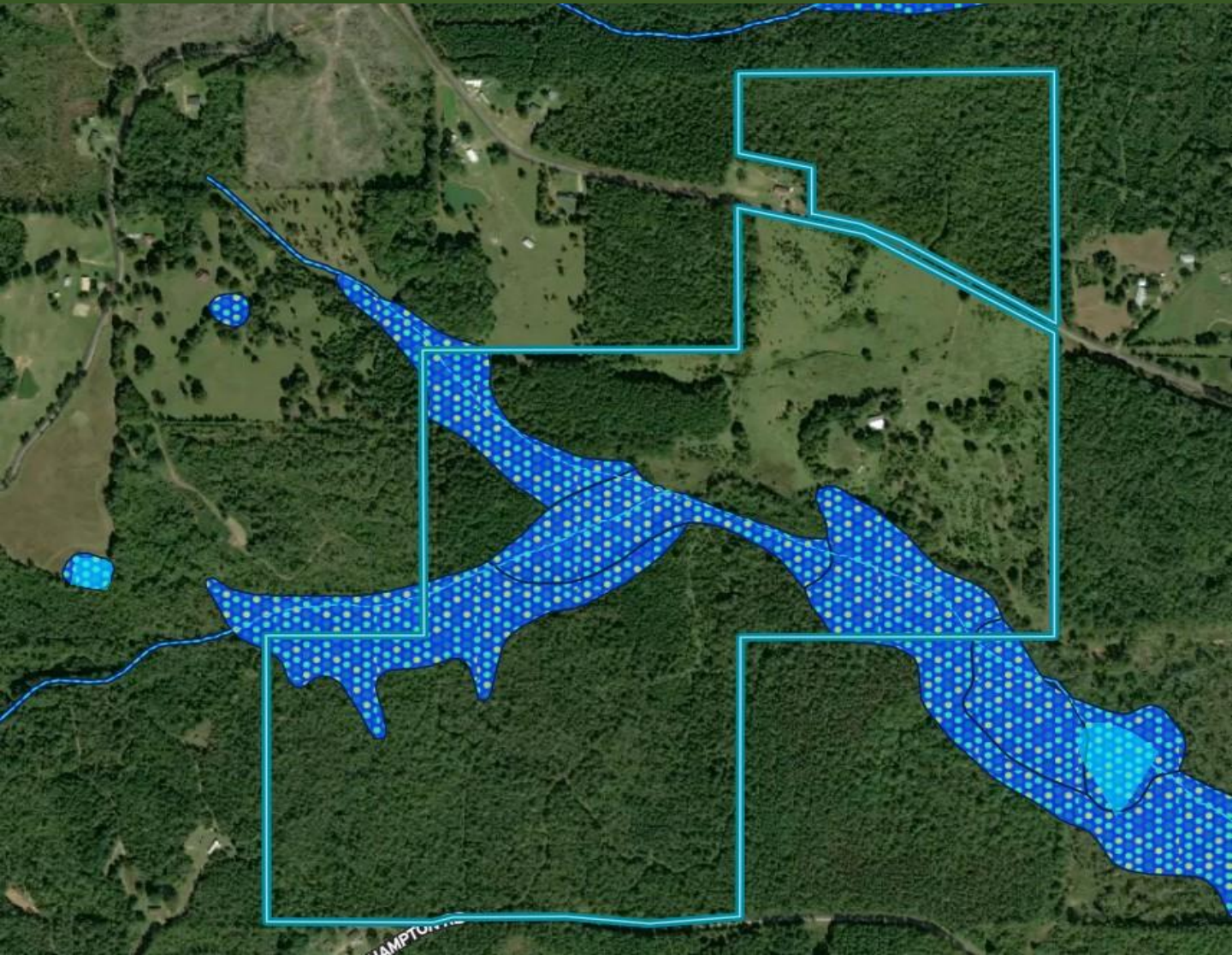
WALKER TRANUM, REALTOR®
Walker@TomSmithHomes.com
662.268.6333 **office** | 662.769.1442 **cell**



TomSmithLandandHomes.com

Information is believed to be accurate but not guaranteed.

Flood Map



Call me today!

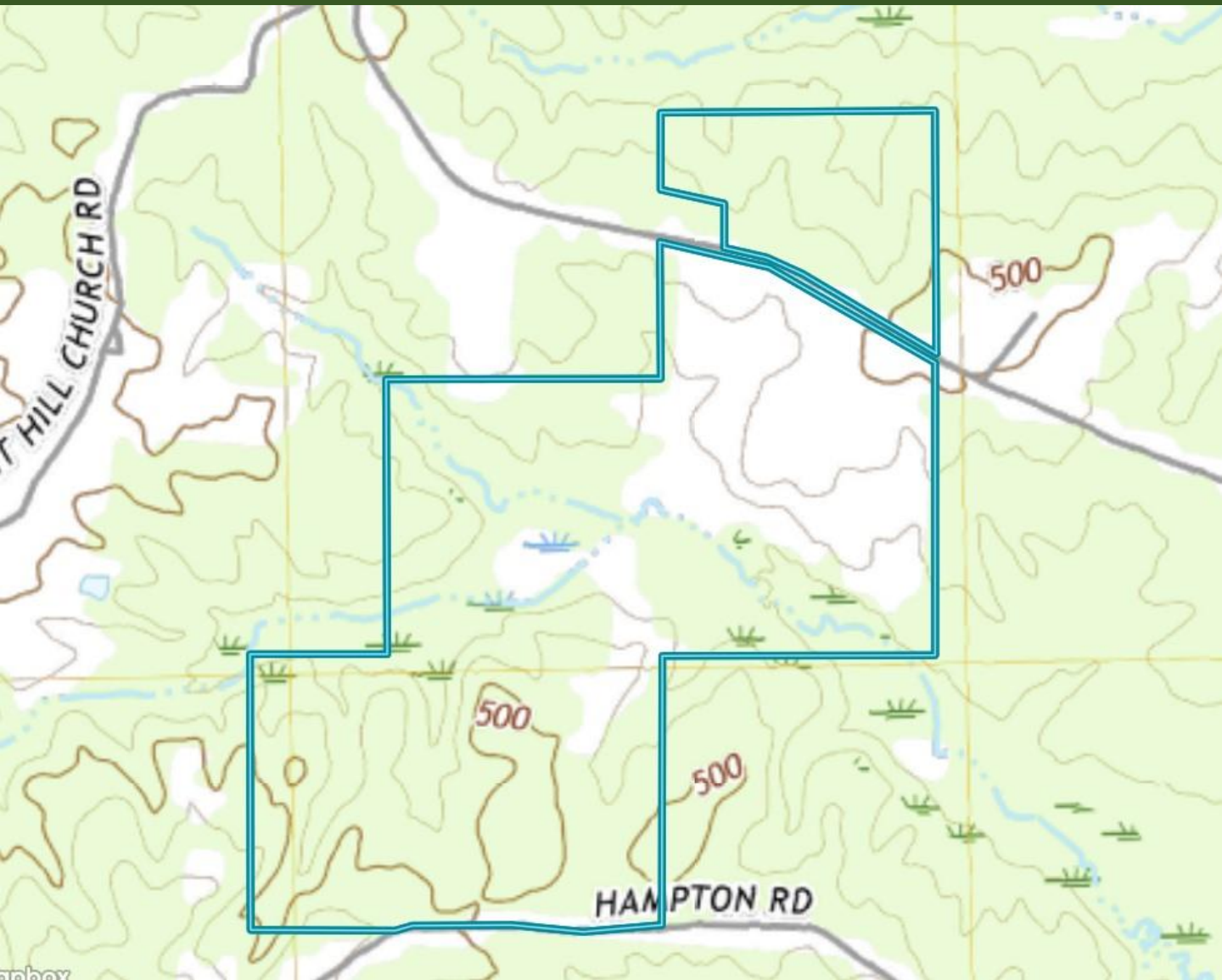
WALKER TRANUM, REALTOR®
Walker@TomSmithHomes.com
662.268.6333 **office** | 662.769.1442 **cell**



TomSmithLandandHomes.com

Information is believed to be accurate but not guaranteed.

Topography Map



Call me today!

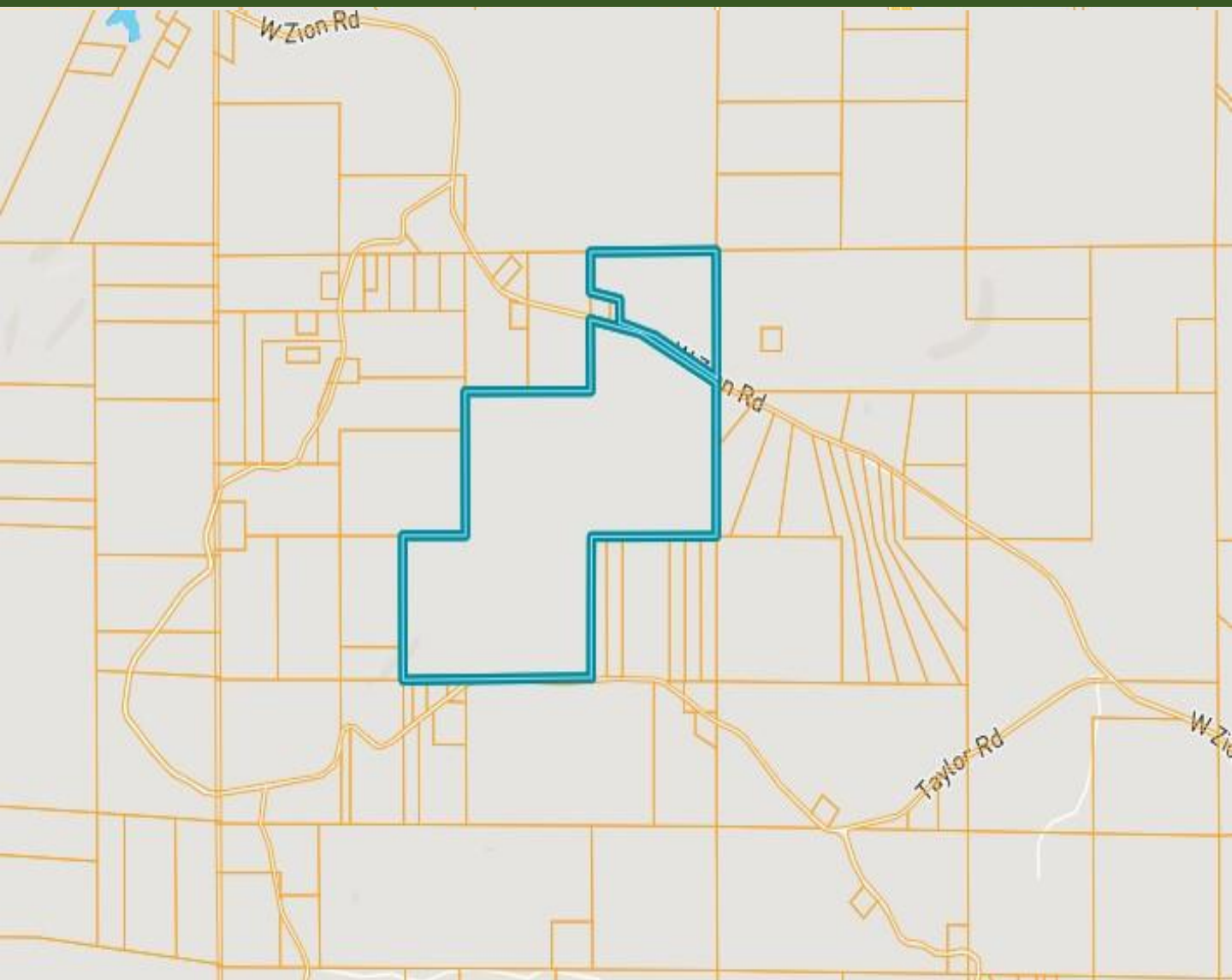
WALKER TRANUM, REALTOR®
Walker@TomSmithHomes.com
662.268.6333 **office** | 662.769.1442 **cell**



TomSmithLandandHomes.com

Information is believed to be accurate but not guaranteed.

Ownership Map



Call me today!

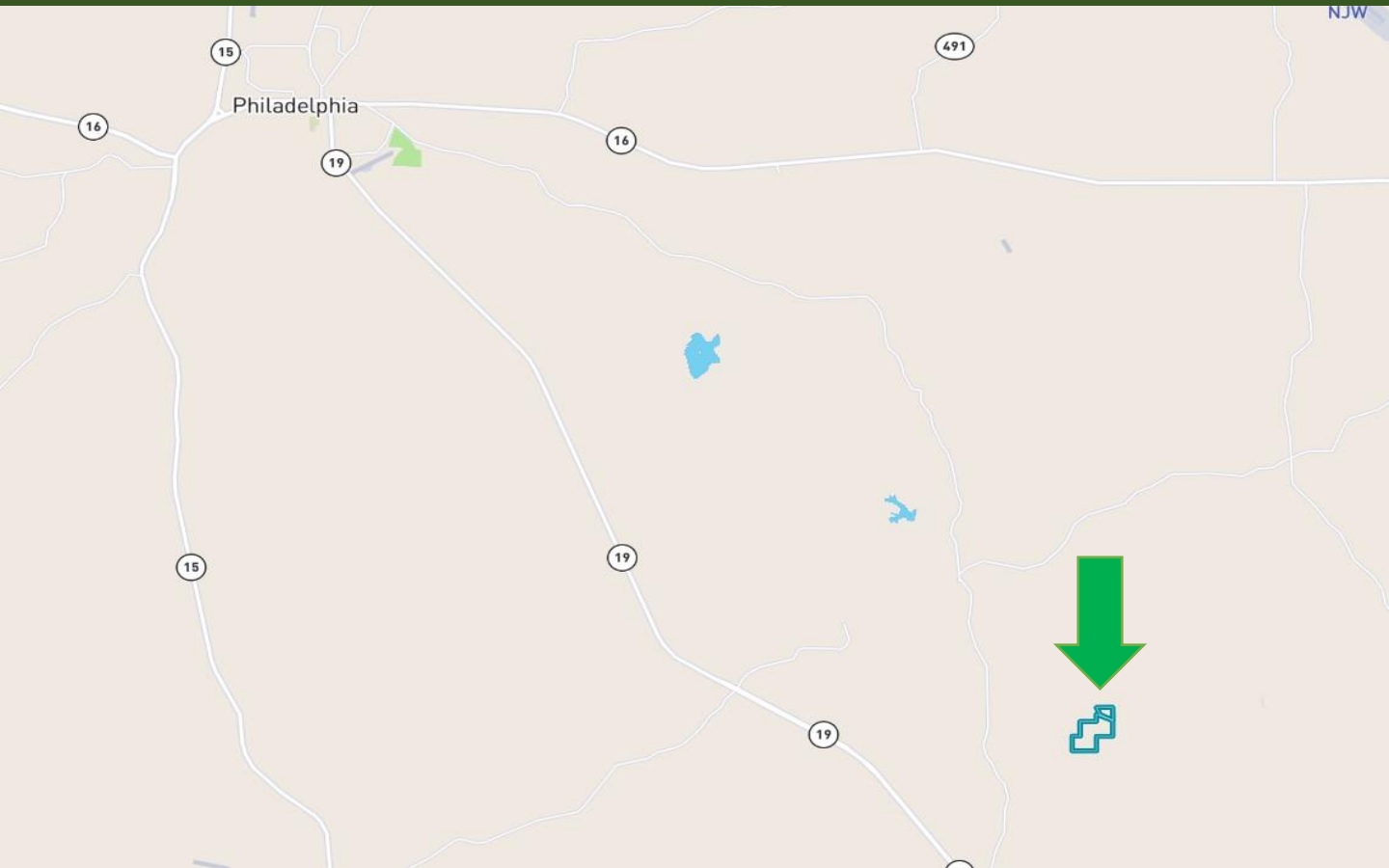
WALKER TRANUM, REALTOR®
Walker@TomSmithHomes.com
662.268.6333 **office** | 662.769.1442 **cell**



TomSmithLandandHomes.com

Information is believed to be accurate but not guaranteed.

Directional Map



Directions from Philadelphia MS: From Main Street in Philadelphia, head east onto MS-21 / Columbus Avenue toward Morrow Street. Then after 269 feet, bear right onto Morrow Street. After .2 miles, turn right onto Crockett Avenue. Then in .3 miles, turn left onto Myrtle Street East. Then after 472 feet, turn right onto Evergreen Avenue. Then after .3 miles, turn left onto MS-16 / East Main Street. Then after 10.8 miles, bear right onto MS-486 / Golf Course Road. Then after 5.1 miles, keep straight onto MS-491. After 1 mile, bear left onto County Road 4316 and after 1.3 miles, the road name changes to West Zion Road. The property will be on your right.



Call me today!

WALKER TRANUM, REALTOR®
Walker@TomSmithHomes.com
662.268.6333 **office** | 662.769.1442 **cell**



Expect More. Get More.

TomSmithLandandHomes.com

Information is believed to be accurate but not guaranteed.