

Great Business or Investment Opportunity

110 East End / Cleveland, MS 38732



Medical Mall Address: 110 East End St. Cleveland, MS 38732

This property is a great business or investment opportunity. Currently, this location is a medical mall with two chiropractor's and a general practitioner. The building is 3,552+/- square feet, with two waiting rooms, two receptionists, six bathrooms, one lab, eight patient rooms, and three smaller rooms. The lot is 190'x150' or .65+/- acres with plenty of parking. The total monthly rental income is \$2,650, and the renters also pay each portion of the utilities. This does not include any rent from the owner/operator. Don't wait; call Tracey today for your private showing! (662)441-2500

Directions from the intersection of Hwy 8 and Hwy 61 in Cleveland, MS: Travel South on Hwy 61 towards East End St, in 0.1 miles, turn right at the 1st cross street onto East End St, and the destination will be on the left in 443 feet.



Call me today!

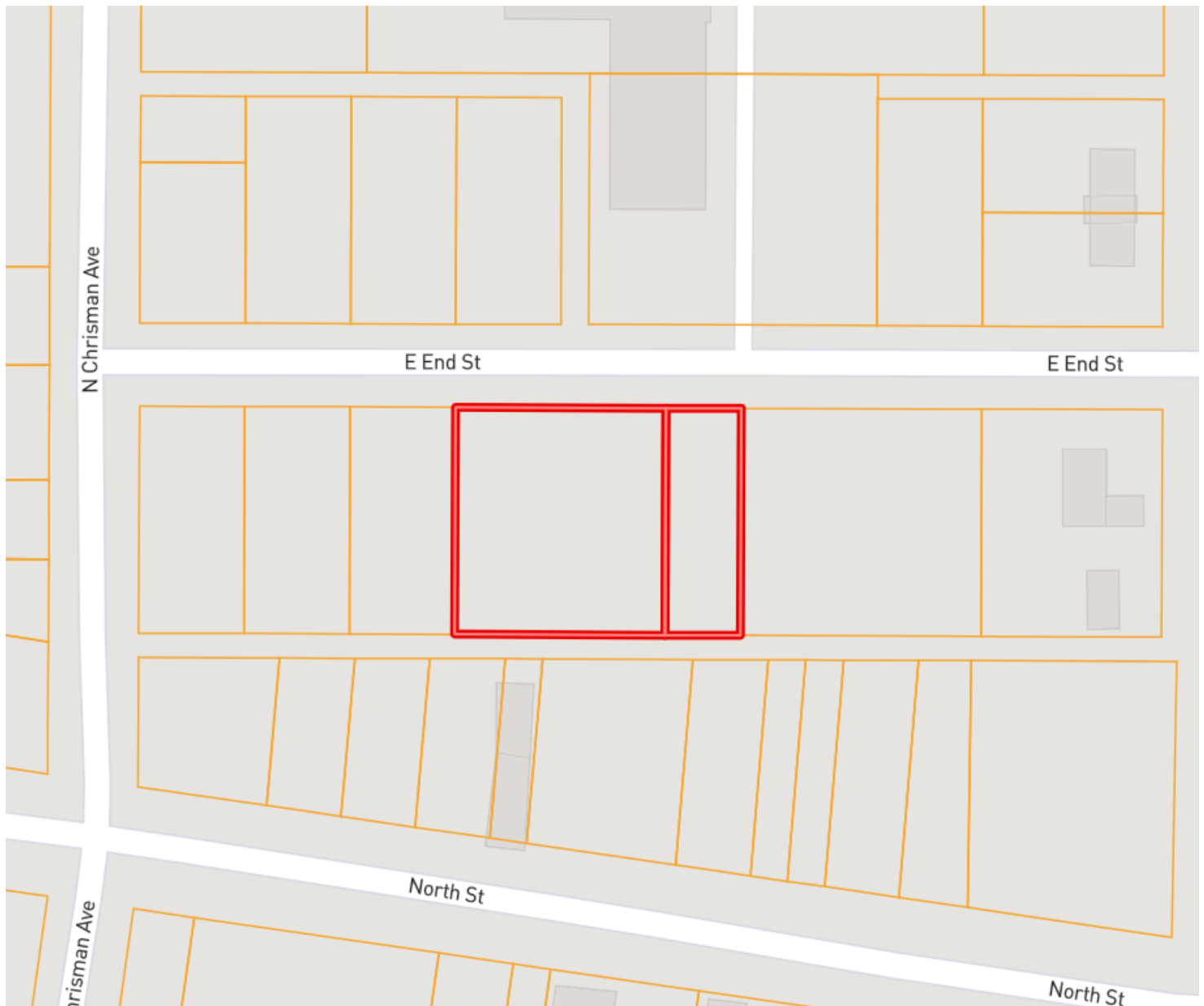
TRACEY BELL, MANAGING BROKER
Tracey@TomSmithLand.com
662.441.2500 **office** | 662.719.4720 **cell**



TomSmithLandandHomes.com

Information is believed to be accurate but not guaranteed.

OWNERSHIP MAP



Call me today!

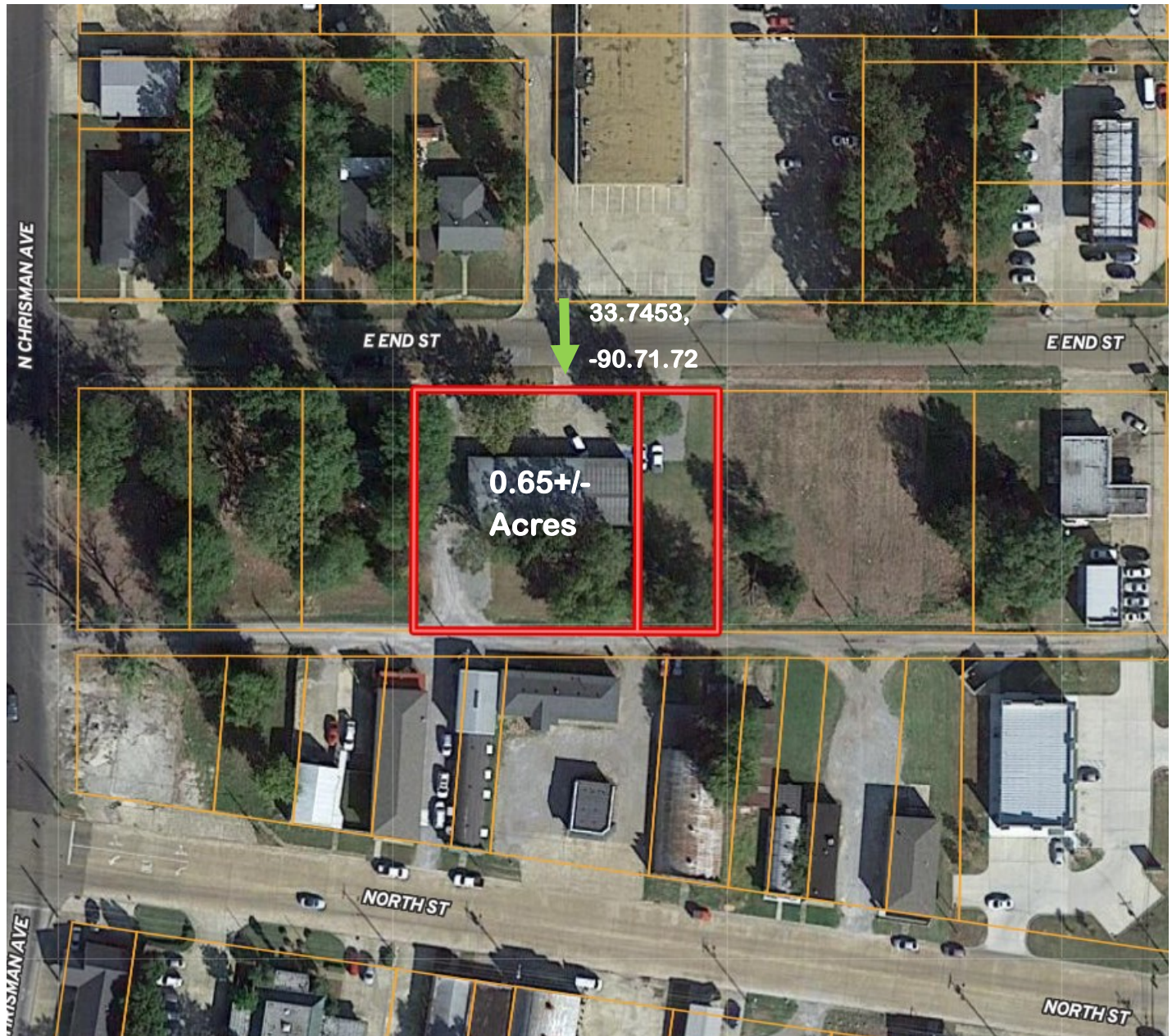
TRACEY BELL, MANAGING BROKER
Tracey@TomSmithLand.com
662.441.2500 **office** | 662.719.4720 **cell**



TomSmithLandandHomes.com

Information is believed to be accurate but not guaranteed.

AERIAL MAP



[CLICK FOR INTERACTIVE MAP](#)

Call me today!

TRACEY BELL, MANAGING BROKER

Tracey@TomSmithLand.com

662.441.2500 **office** | 662.719.4720 **cell**

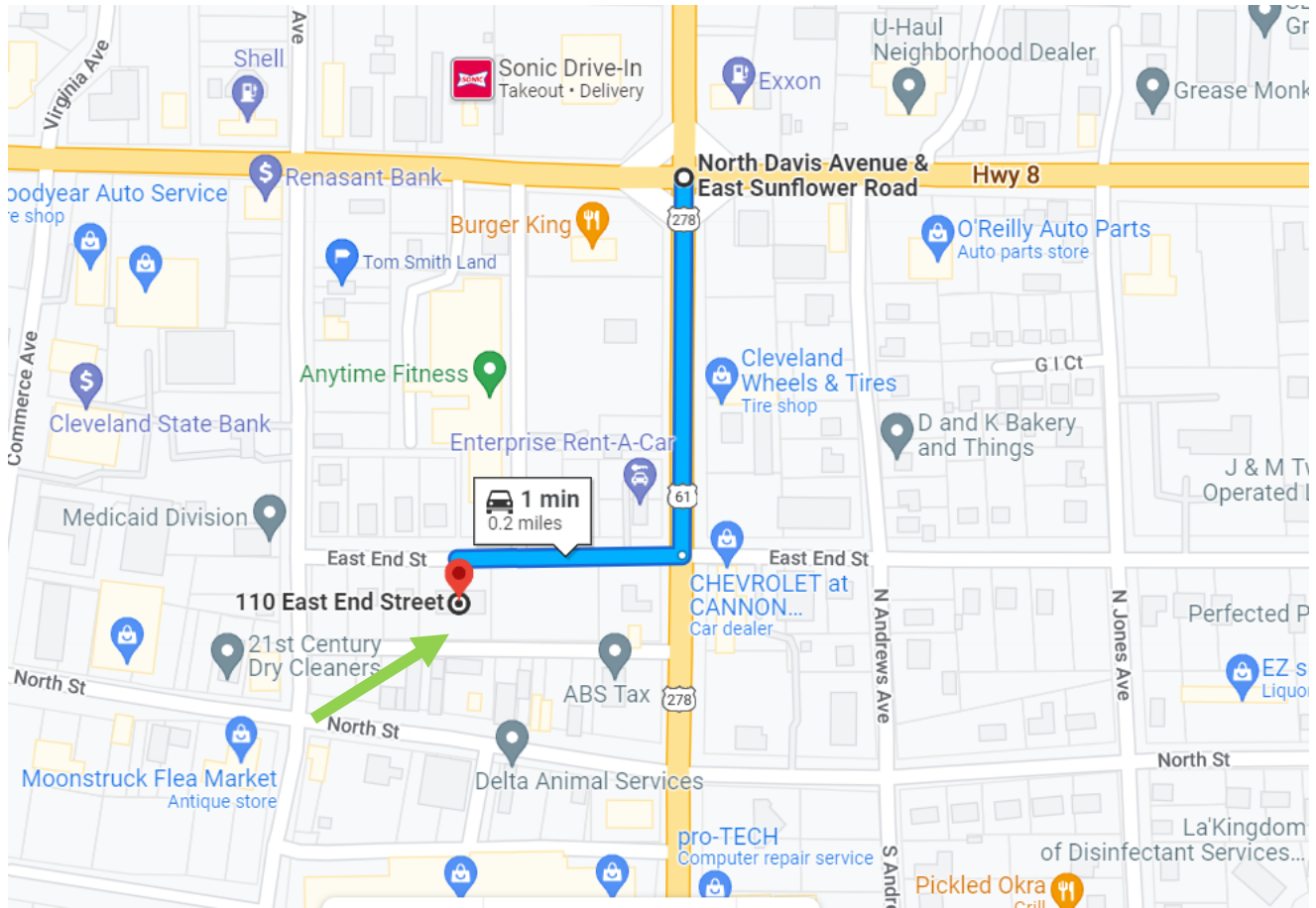


Expect More. Get More.

TomSmithLandandHomes.com

Information is believed to be accurate but not guaranteed.

DIRECTIONAL MAP



Medical Mall Address: 110 East End St. Cleveland, MS 38732

Directions from the intersection of Hwy 8 and Hwy 61 in Cleveland, MS: Travel south on Hwy 61 towards East End St, in 0.1 miles, turn right at the 1st cross street onto East End St. and the destination will be on the left in 443 feet.



Call me today!

TRACEY BELL, MANAGING BROKER
Tracey@TomSmithLand.com
662.441.2500 **office** | 662.719.4720 **cell**



TomSmithLandandHomes.com

Information is believed to be accurate but not guaranteed.