



MOCK RANCHES
kw
GLOBAL LAND MARKETING

PINE ISLAND ESTATES

3554 S PINE ISLAND ROAD BEAUMONT, TX 77705

JEFFERSON COUNTY



3554 S PINE ISLAND ROAD BEAUMONT, TX 77705

JEFFERSON COUNTY



PROPERTY DETAILS:

- Jefferson County
- No City Taxes
- Hike and Bike Trails
- Home Owner's Association
- Meeker Water
- Aerobic Sewer System



All information is deemed reliable, but is not warranted by MOCK RANCHES GROUP. All information is subject to change without prior notice.

3554 S PINE ISLAND ROAD BEAUMONT, TX 77705

JEFFERSON COUNTY

PROPERTY DESCRIPTION.

Pine Island Estates is a Master-Planned Community located on S. Pine Island Road which is just around 5 minutes from Beaumont's West End. It is situated on roughly 550 acres which provides homesites ranging from 1 acre or less. This new ranchette neighborhood is ready to welcome your new home, ranch, barn, pond, and even horses.



HARDIN-JEFFERSON HIGH SCHOOL

3155 Hwy 326 Sour Lake, TX 77659

Children living in Pine Island Estates attend schools in the Hardin-Jefferson High School.



All information is deemed reliable, but is not warranted by MOCK RANCHES GROUP. All information is subject to change without prior notice.

3554 S PINE ISLAND ROAD BEAUMONT, TX 77705

JEFFERSON COUNTY

CURRENT PROJECTS IN THE AREA & MANPOWER NEEDED

1. SEMPRA LNG

LOCATION: PORT ARTHUR

AMOUNT: \$10.5 BILLION

MANPOWER: 8,000

2. GOLDEN PASS LNG

LOCATION: PORT ARTHUR

AMOUNT: \$10 BILLION

MANPOWER: 8,000

3. DRIFTWOOD LNG

LOCATION: SULPHUR, LA

AMOUNT: \$16 BILLION

MANPOWER: 10,000

4. AIR PRODUCTS

LOCATION: TX - LA (4 LOCATIONS)

AMOUNT: \$14 BILLION

MANPOWER: 6,000

5. ENERGY TRANSFER LNG

LOCATION: LAKE CHARLES, LA

AMOUNT: \$10 BILLION

MANPOWER: 8,000

6. CHEVRON

LOCATION: ORANGE

AMOUNT: \$8.5 BILLION

MANPOWER: 7,000

7. EXXON MOBIL

LOCATION: BEAUMONT

AMOUNT: \$6 BILLION

MANPOWER: 1,000

8. OCI METHANOL

LOCATION: BEAUMONT

AMOUNT: \$5 BILLION

MANPOWER: 3,000

9. VALERO

LOCATION: PORT ARTHUR

AMOUNT: \$3 BILLION

MANPOWER: 2,500

10. ARBOR BIOFUELS

LOCATION: BEAUMONT

AMOUNT: \$3 BILLION

MANPOWER: 1,500

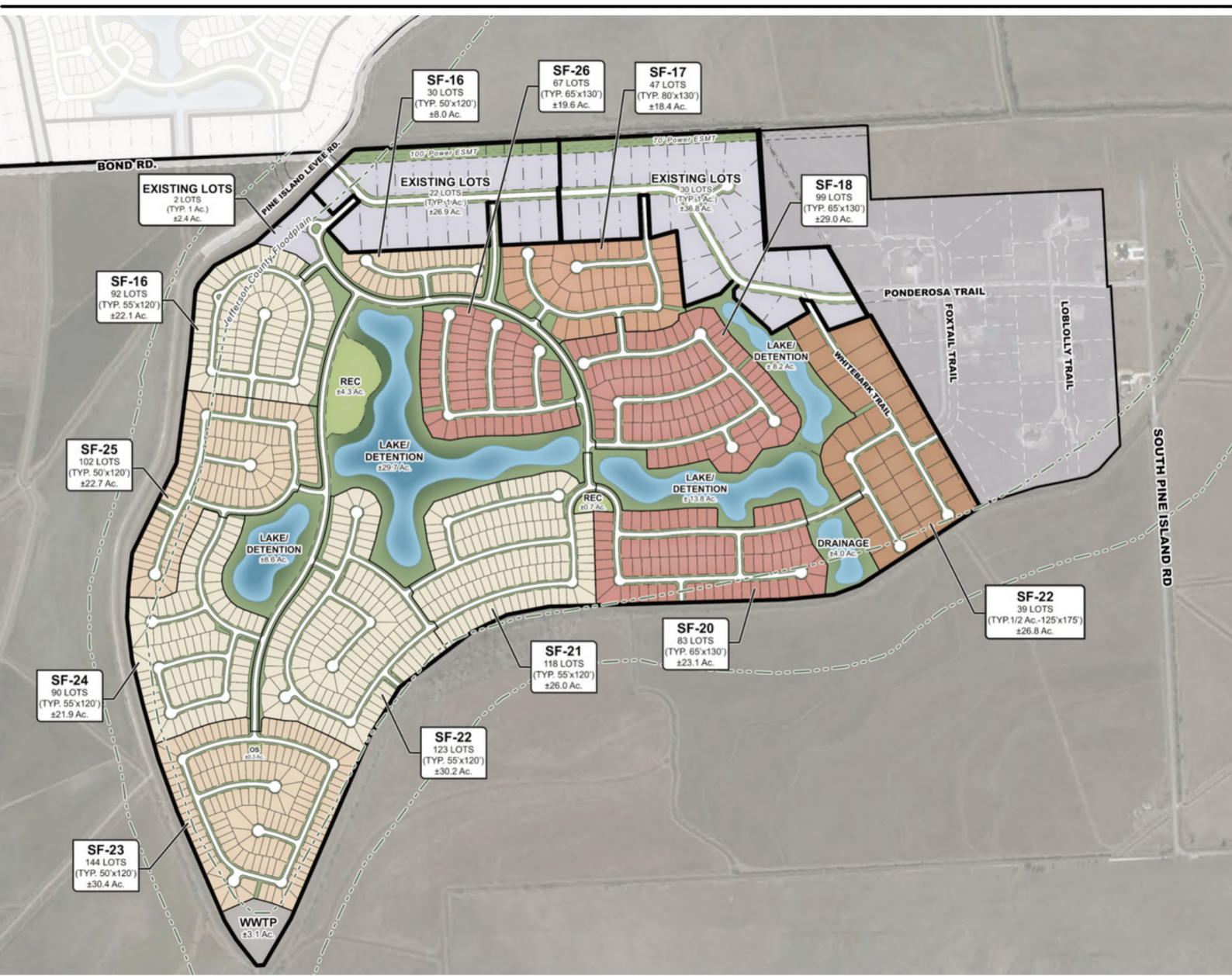
All information is deemed reliable, but is not warranted by MOCK RANCHES GROUP. All information is subject to change without prior notice.

3554 S PINE ISLAND ROAD BEAUMONT, TX 77705

JEFFERSON COUNTY

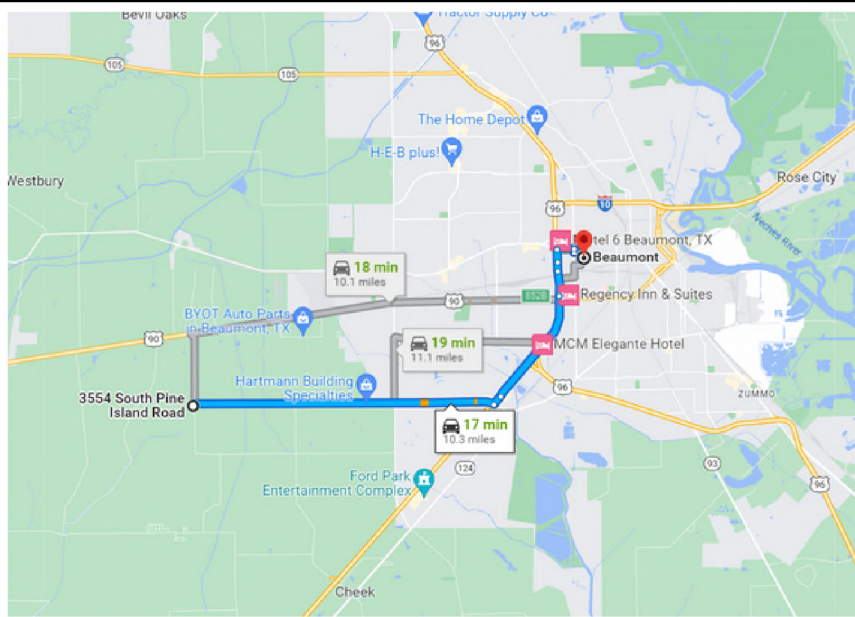


All information is deemed reliable, but is not warranted by MOCK RANCHES GROUP. All information is subject to change without prior notice.



DRIVING DIRECTION.

Pine Island Estates entrance is located off Highway 90 going toward China on S. Pine Island Road on the left just 5 minutes from The West End of Beaumont.



All information is deemed reliable, but is not warranted by MOCK RANCHES GROUP. All information is subject to change without prior notice.



CHAD ANDRUS

Land Specialist

(409) 267-7220

chadandrus@mockranches.com



SCAN FOR CONTACT CARD

All materials and information received or derived from Mock Ranches its directors, officers, agents, advisors, affiliates and/or any third party sources are provided without representation or warranty as to completeness, veracity, or accuracy, condition of the property, compliance or lack of compliance with applicable governmental requirements, developability or suitability, financial performance of the property, projected financial performance of the property for any party's intended use or any and all other matters. Neither Mock Ranches, its directors, officers, agents, advisors, or affiliates makes any representation or warranty, express or implied, as to accuracy or completeness of the materials or information provided, derived, or received. Materials and information from any source, whether written or verbal, that may be furnished for review are not a substitute for a party's active conduct of its own due diligence to determine these and other matters of significance to such party. Mock Ranches will not investigate or verify any such matters or conduct due diligence for a party unless otherwise agreed in writing. EACH PARTY SHALL CONDUCT ITS OWN INDEPENDENT INVESTIGATION AND DUE DILIGENCE.



MOCK RANCHES
kw
GLOBAL LAND MARKETING

www.mockranches.com
(281) 200-2252

Ranch. financing made simple



WINNIE OFFICE

🏠 NMLS493828 | 409.400.4066 | capitalfarmcredit.com



Anthony Vaughan

Disclaimer: Although the Broker or Agent has used reasonable care in obtaining data, this material is submitted without representation, warranty, or guarantees, and is subject to errors and omissions. Moreover, all information is subject to changes by the owner as to price or terms, to prior lease, to withdrawal of the property from the market, and to other events beyond the control of the Broker.

