

## 2.4 +/- Acre Home Site Lincoln County, MS



\$28,700

Have you been searching for an ideal home site in Lincoln County, MS in Bogue Chitto School District? This 2.4+/- surveyed acre parcel has ample road frontage on Summit Drive, a trail system, and multiple ideal home locations. Property is wooded with pine plantation post thinning and has some beautiful scattered hardwoods. Community water and power through Magnolia Electric is available at blacktop. Located approximately ten minutes from Bogue Chitto Attendance Center and halfway between Brookhaven and McComb, MS. Call Blake Sasser today for your private tour.

**Directions from interstate 55 at exit 30, Bogue Chitto, MS:** Travel west on Bogue Chitto Road Southwest for 3.1 miles. Turn left onto Shannon Drive Southwest traveling for 2.9 miles and the destination will be on the right.



*Call me today!*

**BLAKE SASSER, REALTOR\***  
Blake@TomSmithLand.com  
601.990.5070 office | 601.757.5027 cell



**TomSmithLandandHomes.com**



*Call me today!*

**BLAKE SASSER**, REALTOR®  
Blake@TomSmithLand.com  
601.990.5070 **office** | 601.757.5027 **cell**



**TomSmithLandandHomes.com**

Information is believed to be accurate but not guaranteed.

# Aerial Map



Click [here](#) for an interactive map!

*Call me today!*

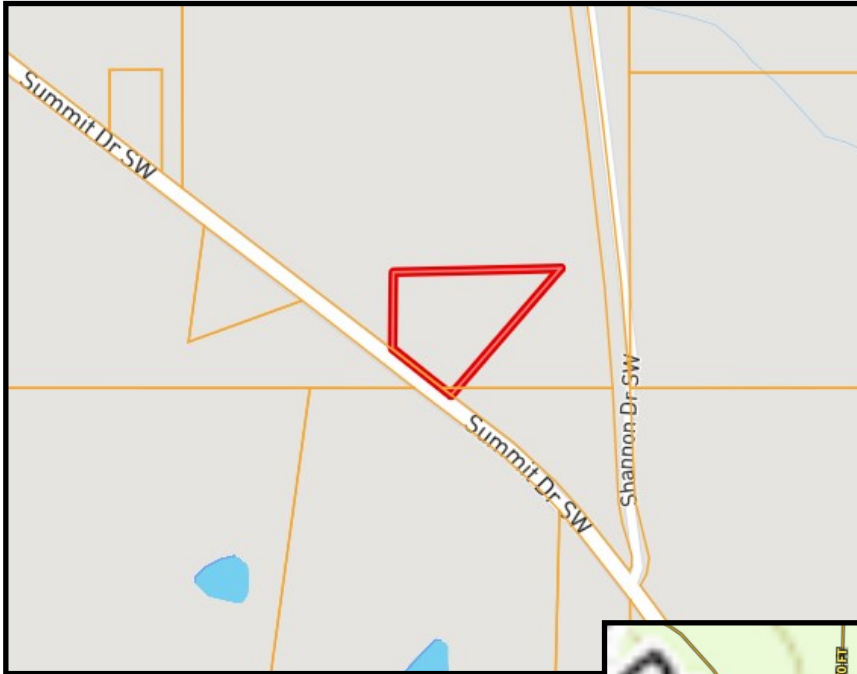
**BLAKE SASSER**, REALTOR®  
Blake@TomSmithLand.com  
601.990.5070 **office** | 601.757.5027 **cell**



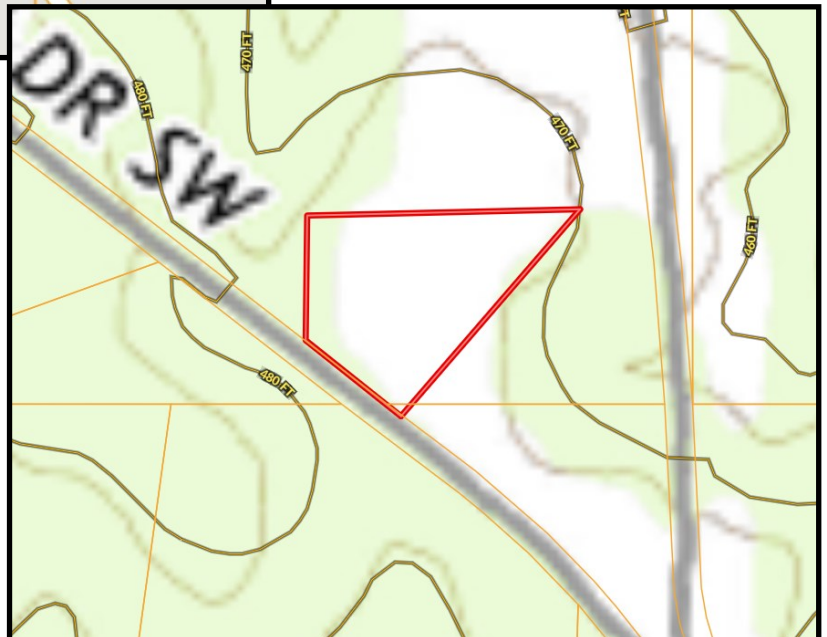
**TomSmithLandandHomes.com**

Information is believed to be accurate but not guaranteed.

# Ownership Map



# Topo Map



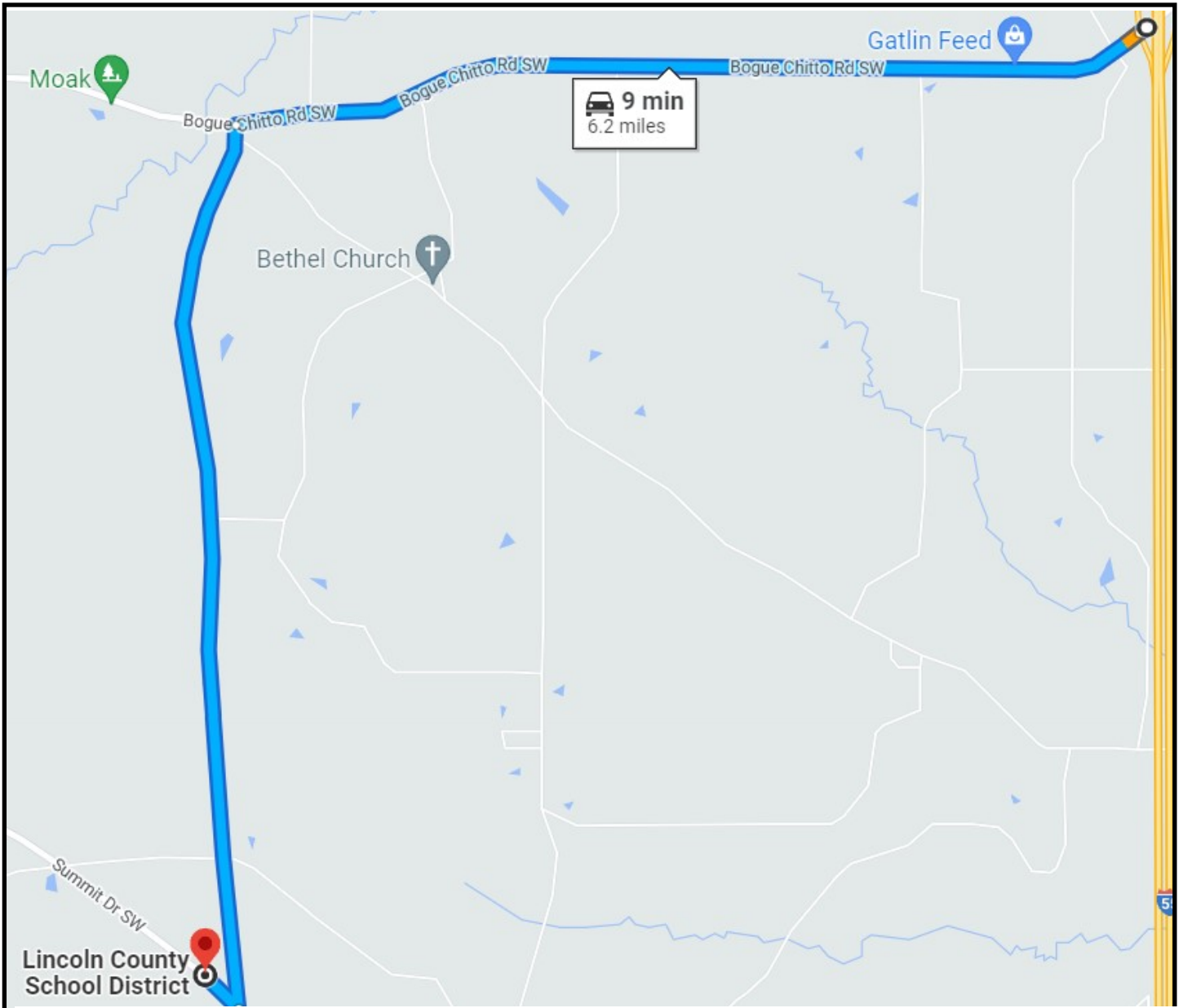
*Call me today!*

**BLAKE SASSER**, REALTOR®  
Blake@TomSmithLand.com  
601.990.5070 **office** | 601.757.5027 **cell**



**TomSmithLandandHomes.com**

Information is believed to be accurate but not guaranteed.



## Directional Map

Directions from interstate 55 at exit 30, Bogue Chitto, MS: Travel west on Bogue Chitto Road Southwest for 3.1 miles. Turn left onto Shannon Drive Southwest traveling for 2.9 miles and the destination will be on the right. [Click here for google link.](#)

*Call me today!*

**BLAKE SASSER**, REALTOR®  
Blake@TomSmithLand.com  
601.990.5070 **office** | 601.757.5027 **cell**



**TomSmithLandandHomes.com**

Information is believed to be accurate but not guaranteed.