

# 5.2 +/- Acres Home Site Lincoln County, MS



5.2+/- surveyed acre parcel located in Lincoln County, MS in the highly sought after Bogue Chitto School District Property features 1,660+/- feet of road frontage on Shannon Drive, an established trail system, and an ideal homesite. Property is wooded with pine plantation post thinning and has some beautiful scattered hardwoods including a grove of oaks in the center. Community water and power through Magnolia Electric is available at the blacktop. Call Blake Sasser today for your private tour.

**Directions from interstate 55 at exit 30, Bogue Chitto, MS:** Travel west on Bogue Chitto Road Southwest for 3.1 miles. Turn left onto Shannon Drive Southwest traveling for 2.9 miles and the destination will be on the right.



*Call me today!*

**BLAKE SASSER, REALTOR\***  
Blake@TomSmithLand.com  
601.990.5070 office | 601.757.5027 cell



**TomSmithLandandHomes.com**



*Call me today!*

**BLAKE SASSER, REALTOR®**  
Blake@TomSmithLand.com  
601.990.5070 office | 601.757.5027 cell



**TomSmithLandandHomes.com**

Information is believed to be accurate but not guaranteed.

# Aerial Map



Click [here](#) for interactive map!

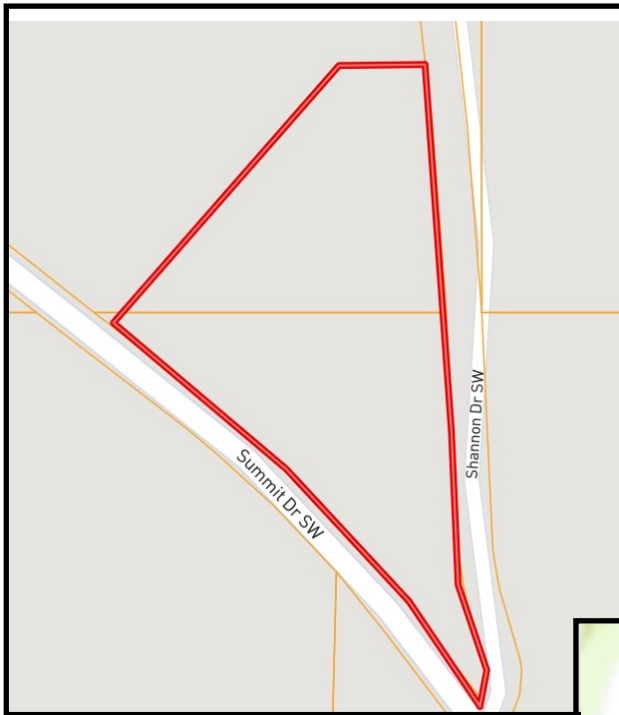
*Call me today!*

**BLAKE SASSER**, REALTOR®  
Blake@TomSmithLand.com  
601.990.5070 office | 601.757.5027 cell

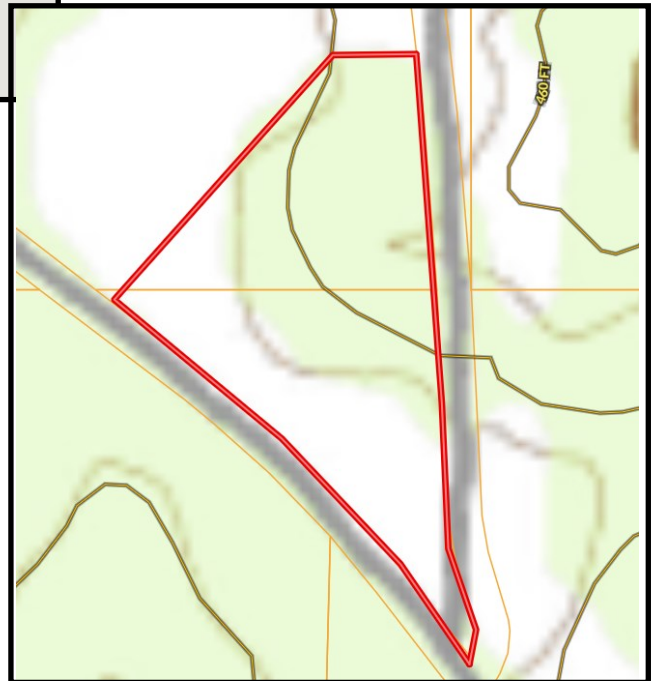


**TomSmithLandandHomes.com**

Information is believed to be accurate but not guaranteed.



Ownership  
Map



Topo  
Map

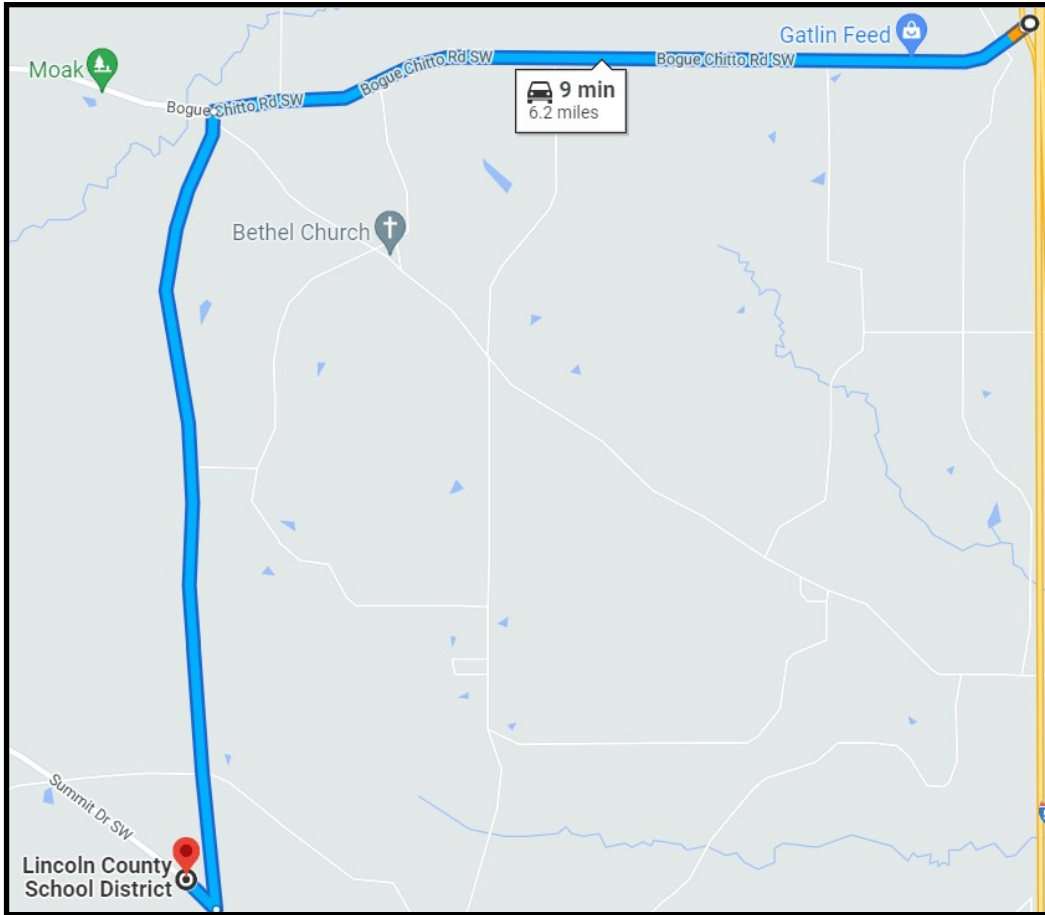
*Call me today!*

**BLAKE SASSER**, REALTOR®  
Blake@TomSmithLand.com  
601.990.5070 **office** | 601.757.5027 **cell**



**TomSmithLandandHomes.com**

Information is believed to be accurate but not guaranteed.



## Directional Map

**Directions from interstate 55 at exit 30, Bogue Chitto, MS:** Travel west on Bogue Chitto Road Southwest for 3.1 miles. Turn left onto Shannon Drive Southwest traveling for 2.9 miles and the destination will be on the right. [Click here for google link.](#)

*Call me today!*

**BLAKE SASSER, REALTOR®**  
Blake@TomSmithLand.com  
601.990.5070 **office** | 601.757.5027 **cell**



**TomSmithLandandHomes.com**

Information is believed to be accurate but not guaranteed.