

38.54+/- Acres of Endless Possibilities

Lincoln County, MS



\$139,000

38.54+/- surveyed acres located in Lincoln County, MS in the Bogue Chitto school district. Featuring a wide cleared entrance leading you deep into the property all the way to the Eastern most line. Multiple homesites on this place give you plenty of ideal choices for your home, camp, or development. Timber is mixed with multiple recently mulched areas open for access and use. The mulched areas could be further converted to pasture, food plots, or your new yard. Wildlife is abundant on this property with some of the best deer hunting Lincoln County has to offer. A small pond sits in the center of the property and is nature stocked with bass and bream. Whether you're looking for a getaway or your ideal homestead this could be the property for you. Located approximately 30 miles North of the Louisiana line between McComb and Brookhaven, MS. Call Blake Sasser for a private tour today.

Directions From Interstate 55 at Exit 30 in Bogue Chitto, MS: Take Exit 30 for Bogue Chitto. Turn West onto Bogue Chitto Rd and travel 6.4 miles. Turn left onto Jackson Liberty Dr SW, continue for 2 miles. Turn left onto Chisholm Dr and travel for approximately 1.1 miles, the property will be on your left.

[GOOGLE MAP LINK](#)



Call me today!

BLAKE SASSER, REALTOR*
Blake@TomSmithLand.com
601.990.5070 office | 601.757.5027 cell



TomSmithLandandHomes.com



Call me today!

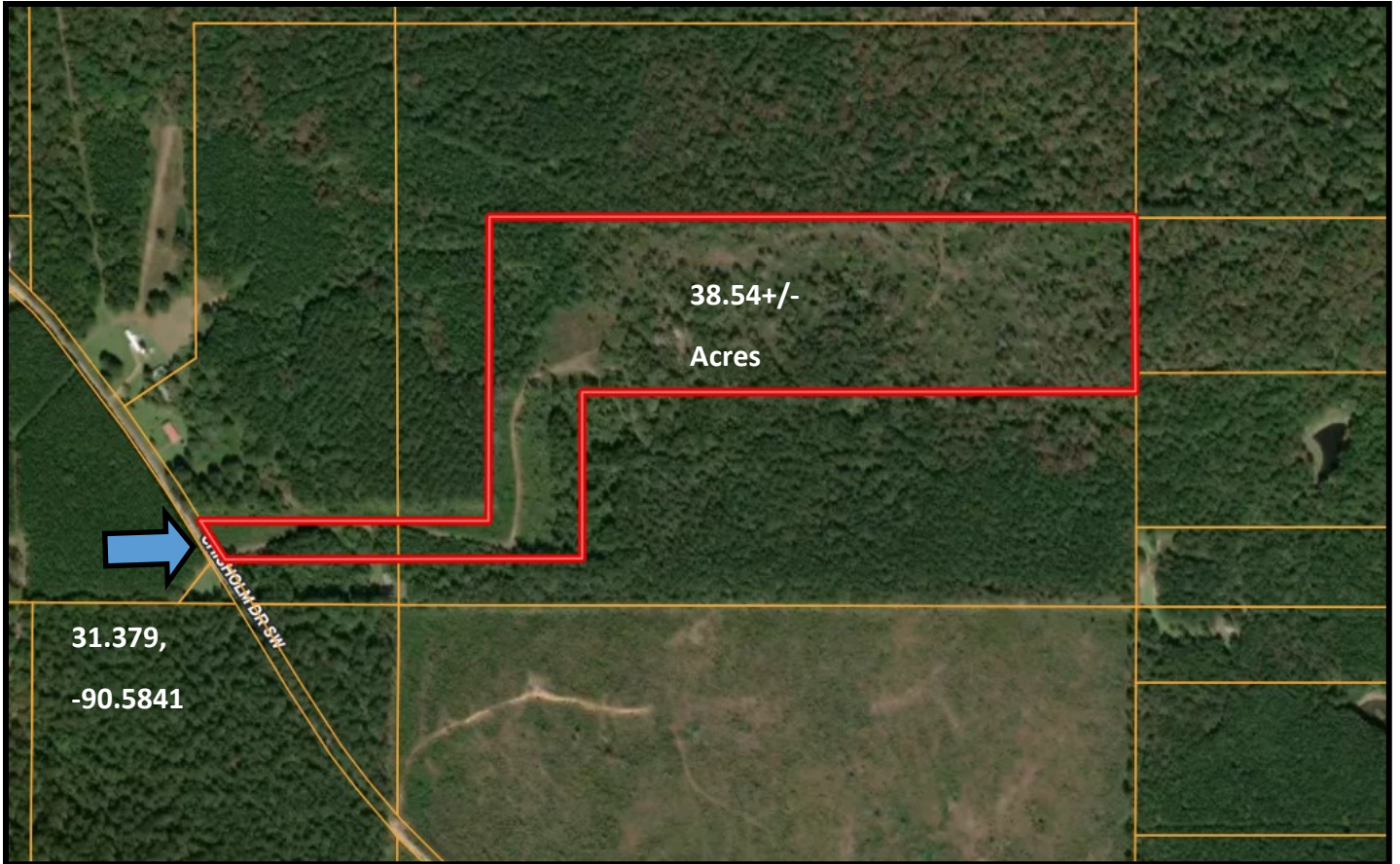
BLAKE SASSER, REALTOR®
Blake@TomSmithLand.com
601.990.5070 office | 601.757.5027 cell



TomSmithLandandHomes.com

Information is believed to be accurate but not guaranteed.

Aerial Map



Click [here](#) for an interactive map link.

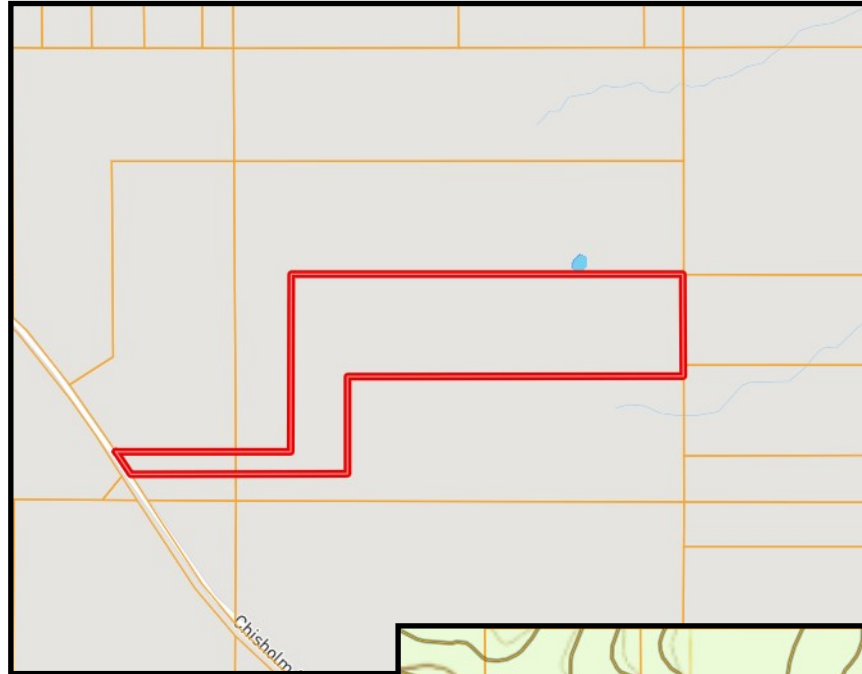
Call me today!

BLAKE SASSER, REALTOR®
Blake@TomSmithLand.com
601.990.5070 **office** | 601.757.5027 **cell**



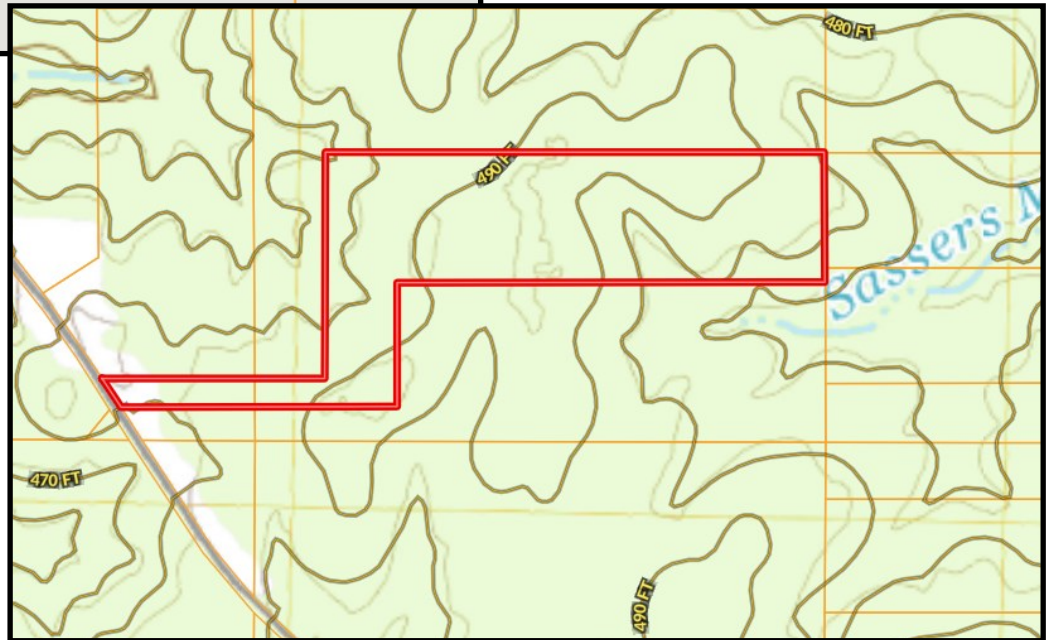
TomSmithLandandHomes.com

Information is believed to be accurate but not guaranteed.



Ownership
Map

Topo
Map



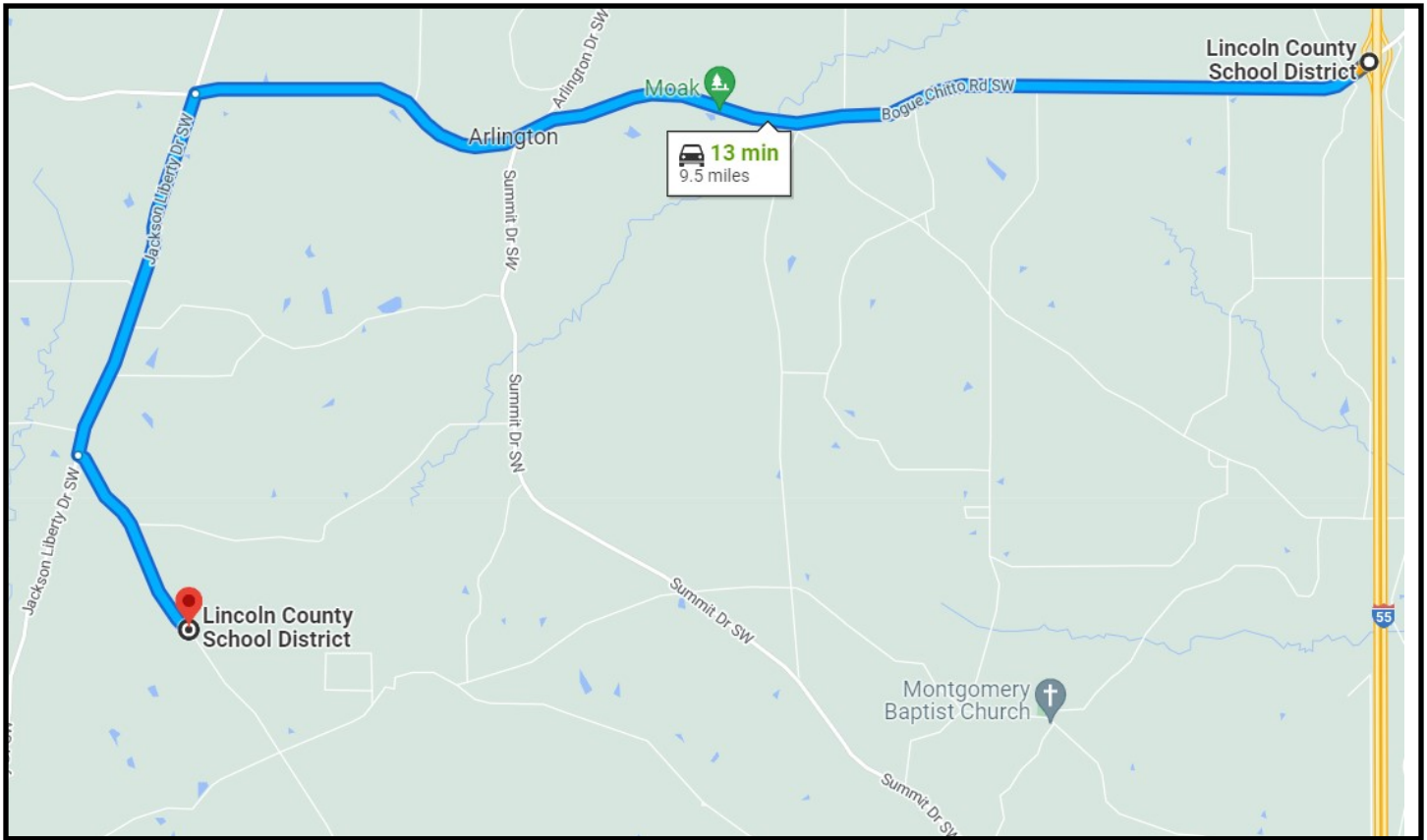
Call me today!

BLAKE SASSER, REALTOR®
Blake@TomSmithLand.com
601.990.5070 office | 601.757.5027 cell



TomSmithLandandHomes.com

Information is believed to be accurate but not guaranteed.



Directional Map

Directions From Interstate 55 at Exit 30 in Bogue Chitto, MS: Take Exit 30 for Bogue Chitto. Turn West onto Bogue Chitto Rd and travel 6.4 miles. Turn left onto Jackson Liberty Dr SW, continue for 2 miles. Turn left onto Chisholm Dr and travel for approximately 1.1 miles, the property will be on your left.

[GOOGLE MAP LINK](#)

Call me today!

BLAKE SASSER, REALTOR®
Blake@TomSmithLand.com
601.990.5070 office | 601.757.5027 cell



TomSmithLandandHomes.com

Information is believed to be accurate but not guaranteed.