

# Residential or Commercial Investment

**12± Acres in Lincoln County, MS**



**Calling all investors! Come take a look at this residential property/investment package on 12+/- acres inside the city limits of Brookhaven, MS! This property features: a 16x80 single wide mobile home with a back patio and storage shed, a quonset hut on a slab with a 1/2 bath, a vacant home site with a well-kept sidewalk entry, a 1,700 sf home currently occupied by a tenant, a large metal shop presently being used for commercial space, and hook ups present for another income-producing dwelling of your choosing. With 12+/- acres, you have more than enough room to expand as you please. Please ask your agent for disclosures as they are present in mls for each space. City covenants and restrictions still apply. Call Blake to set up your viewing today!**



*Call me today!*

**BLAKE SASSER, REALTOR®**  
Blake@TomSmithLand.com  
601.990.5070 office | 601.757.5027 cell



**TomSmithLandandHomes.com**

Information is believed to be accurate but not guaranteed.





*Call me today!*

**BLAKE SASSER**, REALTOR®  
Blake@TomSmithLand.com  
601.990.5070 office | 601.757.5027 cell



Expect More. Get More.

**TomSmithLandandHomes.com**

Information is believed to be accurate but not guaranteed.





*Call me today!*

**BLAKE SASSER**, REALTOR®  
Blake@TomSmithLand.com  
601.990.5070 office | 601.757.5027 cell



**TomSmithLandandHomes.com**

Information is believed to be accurate but not guaranteed.





*Call me today!*

**BLAKE SASSER, REALTOR®**  
Blake@TomSmithLand.com  
601.990.5070 **office** | 601.757.5027 **cell**



**TomSmithLandandHomes.com**

Information is believed to be accurate but not guaranteed.





*Call me today!*

**BLAKE SASSER**, REALTOR®  
Blake@TomSmithLand.com  
601.990.5070 office | 601.757.5027 cell

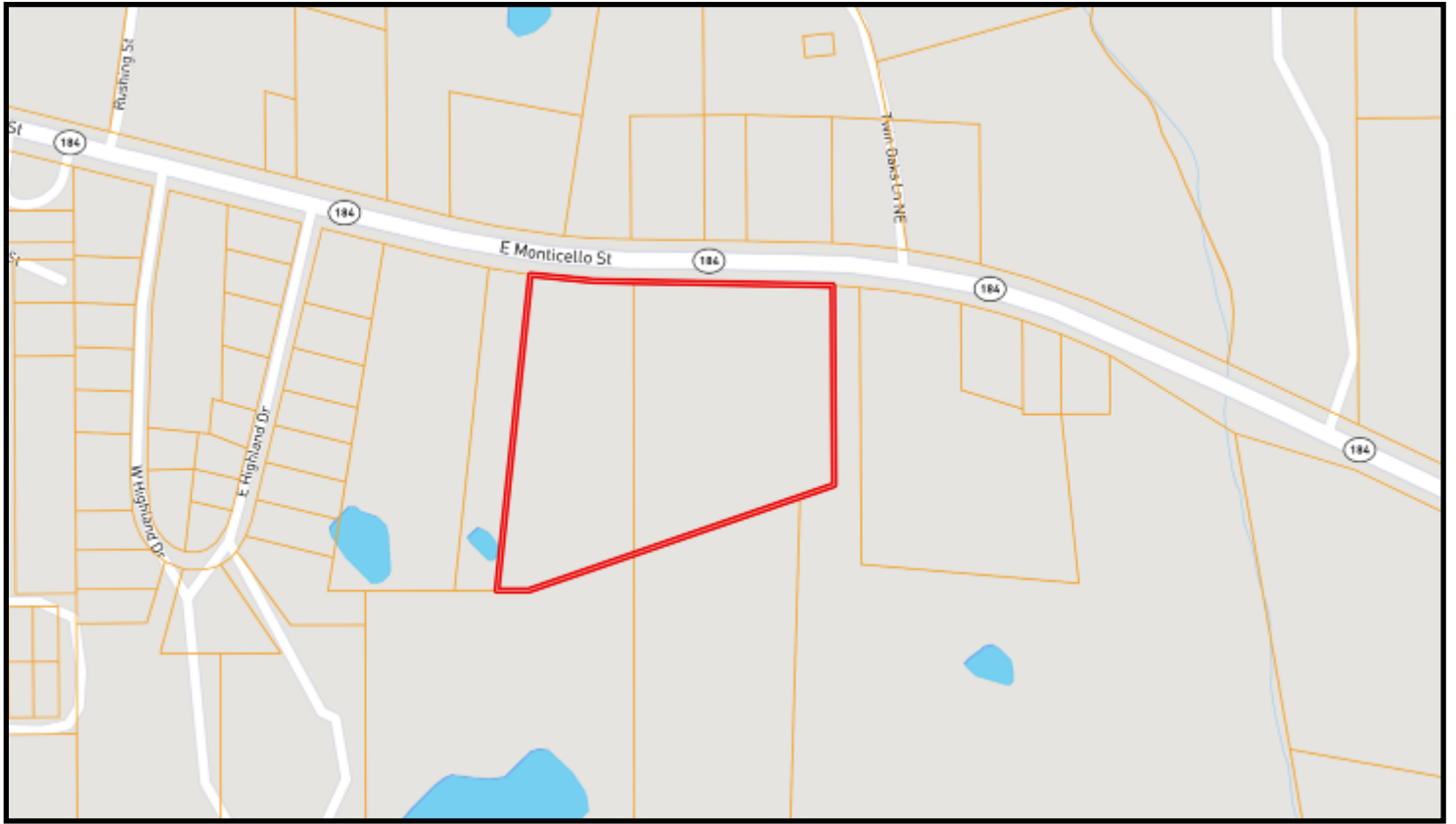


**TomSmithLandandHomes.com**

Information is believed to be accurate but not guaranteed.



# OWNERSHIP MAP



*Call me today!*

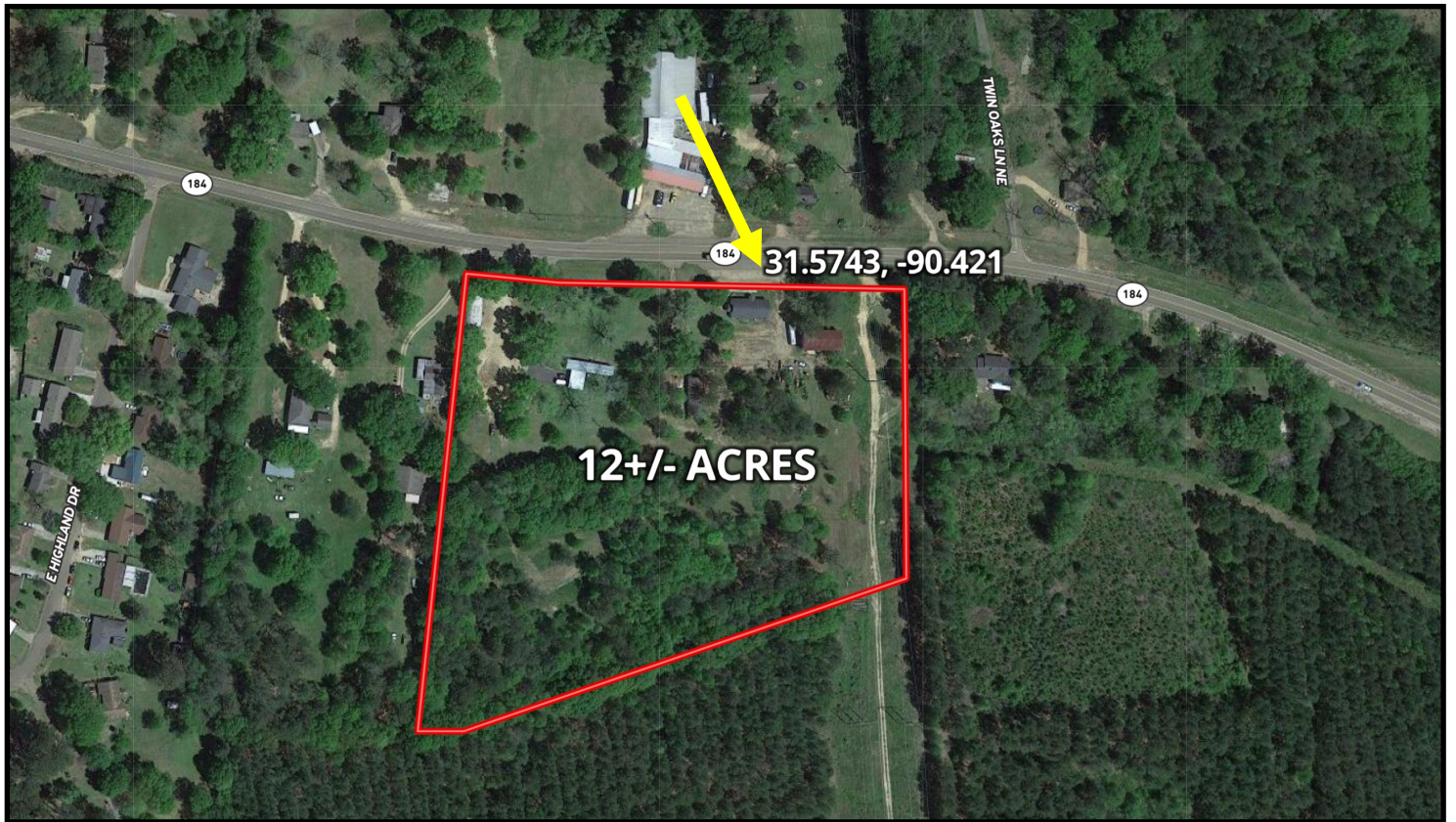
**BLAKE SASSER**, REALTOR®  
Blake@TomSmithLand.com  
601.990.5070 **office** | 601.757.5027 **cell**



**TomSmithLandandHomes.com**

Information is believed to be accurate but not guaranteed.

# AERIAL MAP



Click [HERE](#) for an Interactive Map

*Call me today!*

**BLAKE SASSER**, REALTOR<sup>®</sup>  
Blake@TomSmithLand.com  
601.990.5070 office | 601.757.5027 cell

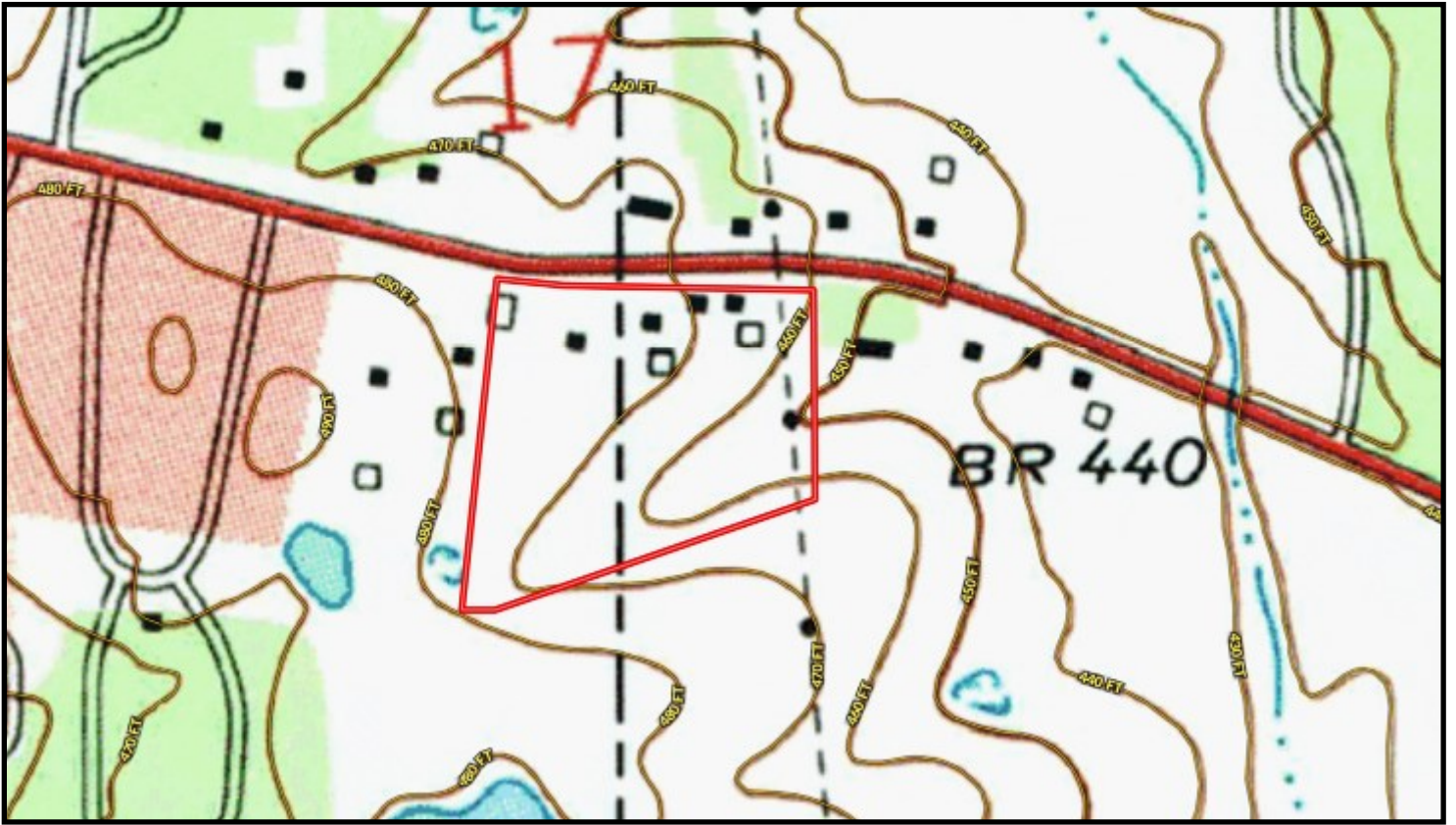


[TomSmithLandandHomes.com](http://TomSmithLandandHomes.com)

Information is believed to be accurate but not guaranteed.



# TOPO MAP



*Call me today!*

**BLAKE SASSER**, REALTOR<sup>®</sup>

Blake@TomSmithLand.com

601.990.5070 **office** | 601.757.5027 **cell**



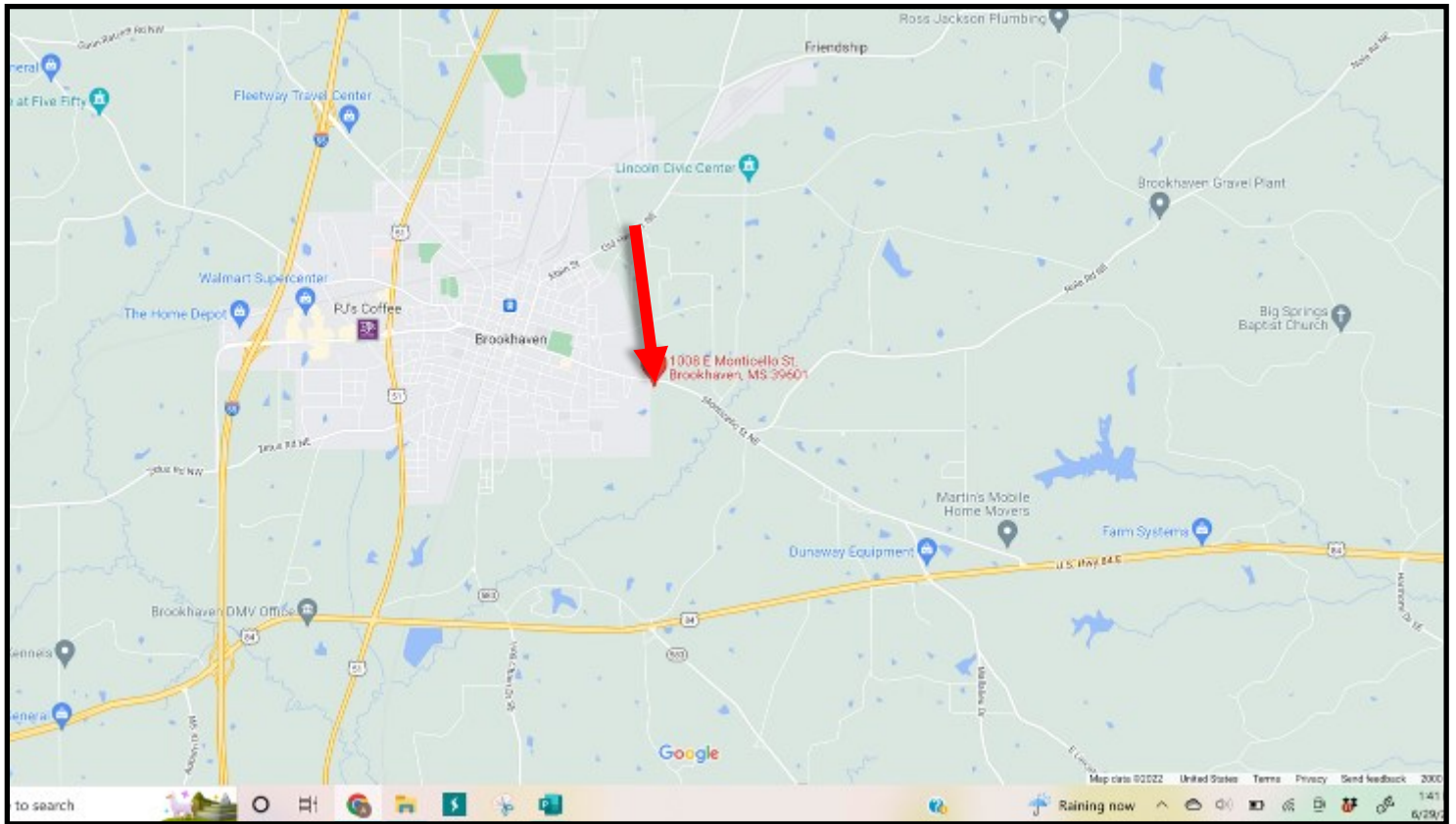
Expect More. Get More.

**TomSmithLandandHomes.com**

Information is believed to be accurate but not guaranteed.



# DIRECTIONAL MAP



**Directions from the Intersection of Hwy 51 and Schwem Ave. in Brookhaven, MS: Continue on Schwem Ave./E Monticello St for 2.2 miles, the property will be on your left. [GOOGLE MAP LINK](#)**

*Call me today!*

**BLAKE SASSER**, REALTOR<sup>®</sup>  
Blake@TomSmithLand.com  
601.990.5070 **office** | 601.757.5027 **cell**



**TomSmithLandandHomes.com**

Information is believed to be accurate but not guaranteed.