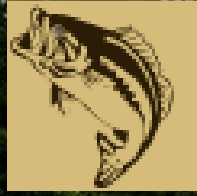


# 3 Bedroom / 2 Bath Home in Monterey, LA



7004 Hwy 565  
Monterey, LA 71354

[Interactive Map!](#)

**\$115,000**

You really have to see it to understand! This 2018 three-bedroom, two bath 2,600+/- square foot mobile in Monterey, LA, in Concordia Parish, is beautiful. Used as a second home, it is just waiting for its next owners. The open floorplan, expansive kitchen, and exposed beams give a sense of elegance. The bedrooms are large, and the primary suite is beautiful. The large back porch offers plenty of room for the quiet enjoyment of fall afternoons. If you are an outdoorsman, you will know this home is located near some of the best outdoor recreations you will ever find in Louisiana. If you are a fisherman, you will appreciate being just minutes from the famed Black River Lake complex. To make it even better, you are only a 20-minute drive to "Old River" and Jugheads Landing. If you are a duck hunter, you already know that you are in the center of the Mississippi Flyway! The lot, which is paid until January 2023, is leased annually and is transferable to the new owner. Call Clif Cannon to schedule a private tour today!

Directions from Vidalia, LA: Travel south on LA-131 for 6.7 miles. Merge onto LA-15S and travel for 8.9 miles. Turn right onto LA-565 and travel for 7.6 miles. Turn right into the drive, the home will be on the right about 100 yards.



*Call me today!*

**CLIF CANNON**, REALTOR®  
Clif@TomSmithLand.com  
601.990.5070 office | 601.565.1070 cell



**TomSmithLandandHomes.com**

Information is believed to be accurate but not guaranteed.



*Call me today!*

**CLIF CANNON, REALTOR**

Clif@TomSmithLand.com

601.990.5070 office | 601.565.1070 cell



Expect More. Get More.

**TomSmithLandandHomes.com**

Information is believed to be accurate but not guaranteed.



*Call me today!*

**CLIF CANNON, REALTOR®**

Clif@TomSmithLand.com

601.990.5070 office | 601.565.1070 cell



Expect More. Get More.

**TomSmithLandandHomes.com**

Information is believed to be accurate but not guaranteed.



*Call me today!*

**CLIF CANNON, REALTOR®**

Clif@TomSmithLand.com

601.990.5070 office | 601.565.1070 cell



Expect More. Get More.



**TomSmithLandandHomes.com**

Information is believed to be accurate but not guaranteed.

# Aerial Map

Leased and Transferable lot

.22+/-Acres

31.449, -91.7026



[Interactive Map!](#)

*Call me today!*

**CLIF CANNON**, REALTOR®

Clif@TomSmithLand.com

601.990.5070 office | 601.565.1070 cell

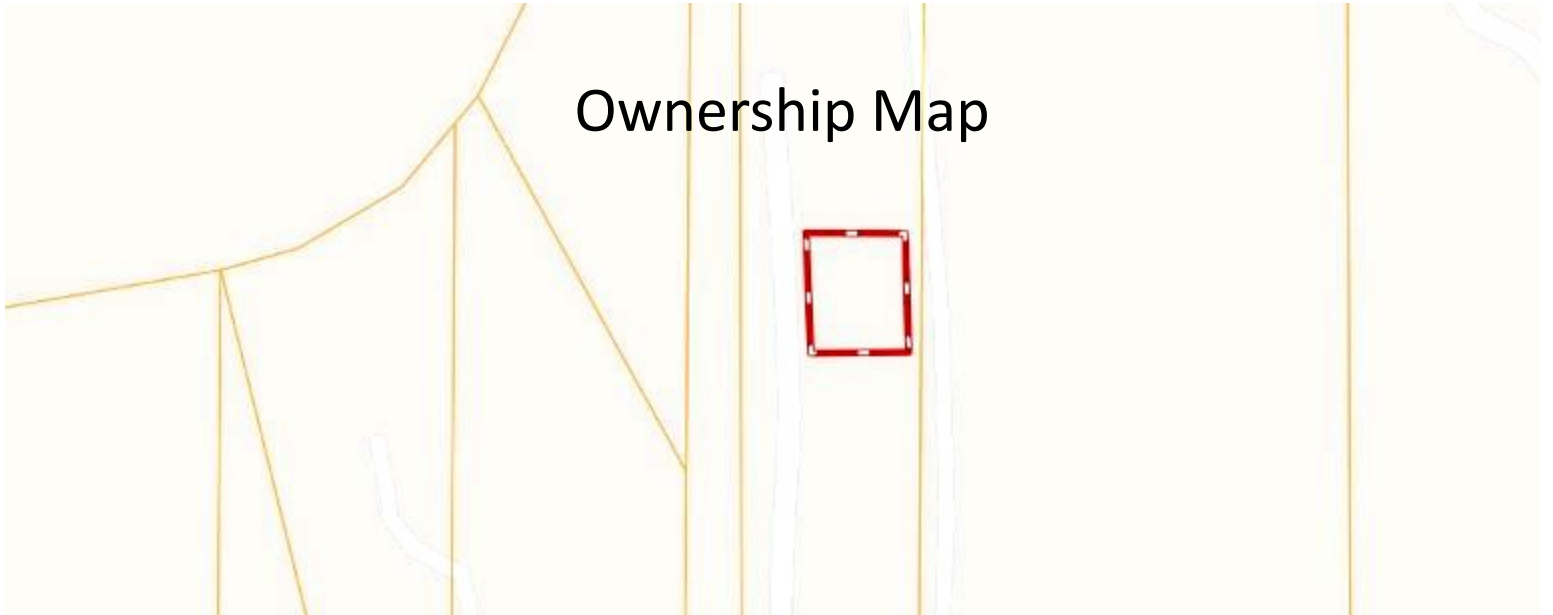


Expect More. Get More.

[TomSmithLandandHomes.com](http://TomSmithLandandHomes.com)

Information is believed to be accurate but not guaranteed.

# Ownership Map



# Flood / Wetlands Map

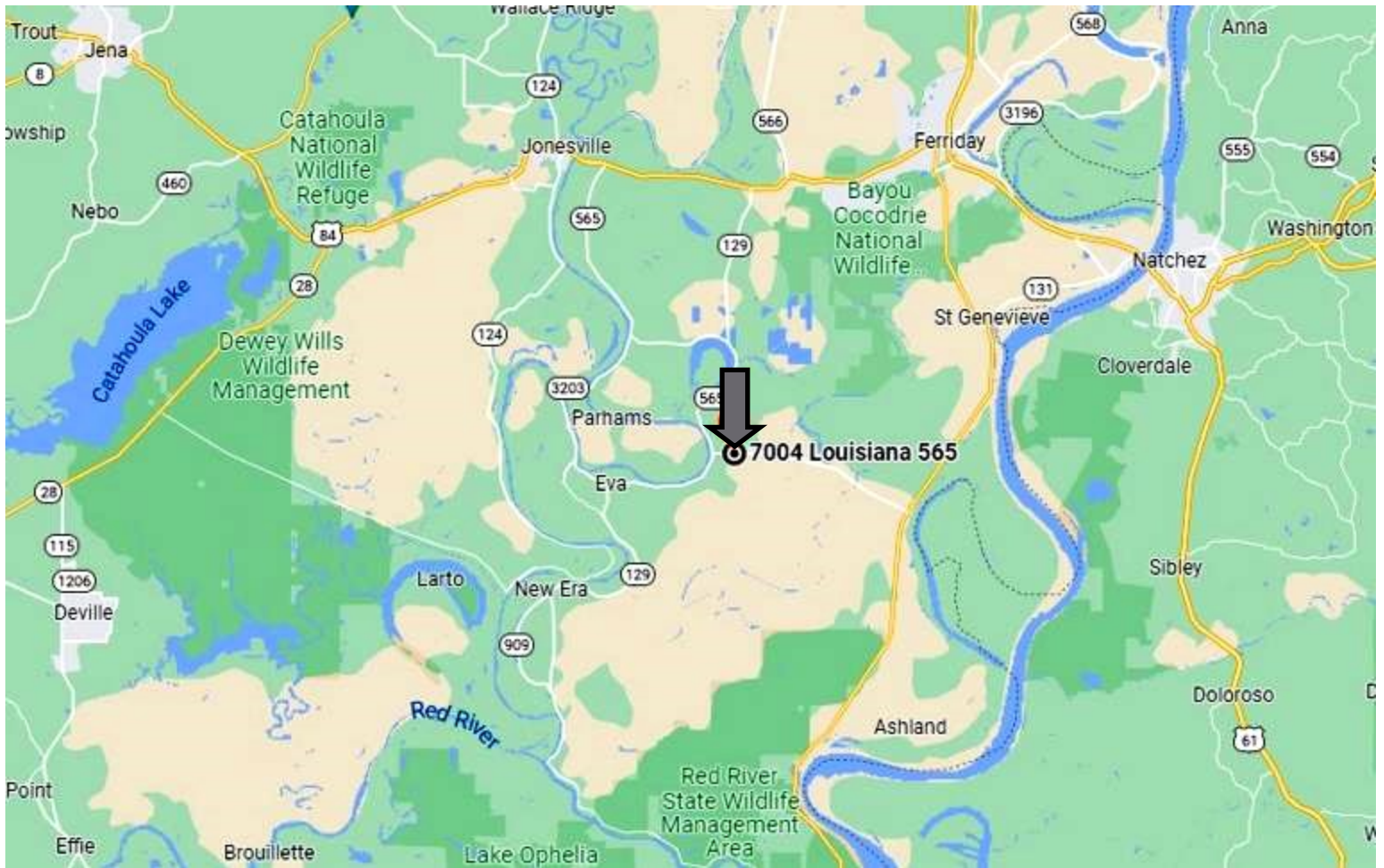
*Call me today!*

**CLIF CANNON, REALTOR®**  
Clif@TomSmithLand.com  
601.990.5070 office | 601.565.1070 cell



**TomSmithLandandHomes.com**

Information is believed to be accurate but not guaranteed.



## Directional Map

Directions from Vidalia, LA: Travel south on LA-131 for 6.7 miles. Merge onto LA-155 and travel for 8.9 miles. Turn right onto LA-565 and travel for 7.6 miles. Turn right into the drive, the home will be on the right about 100 yards.

7004 Hwy 565, Monterey LA 71354

[Google Maps](#)

*Call me today!*

**CLIF CANNON, REALTOR®**

Clif@TomSmithLand.com

601.990.5070 **office** | 601.565.1070 **cell**



Expect More. Get More.

**TomSmithLandandHomes.com**

Information is believed to be accurate but not guaranteed.