

# 38+/- Acres Recreational Timberland Lincoln County, MS



\$139,000

38+/- acre recreational timberland investment in SE Lincoln County. The property features mature pine timber (post first thinning) interior trail system, and multiple food plots. Electricity is on site through Magnolia Electric and community water is available through Lincoln County Rural Water Association. Multiple homesite/campsite options are present, including a cleared area a couple hundred feet from the entrance at the SE corner. Food plots are well established and most feature multiple shooting corridors. Some scattered hardwoods are present throughout with a concentration of oaks along the south line. Conveniently located less than 1.5 miles South of Hwy 84, approximately 15 minutes East of Brookhaven, MS, and less than an hour from Louisiana line at Interstate 55. Call Blake Sasser today to schedule your private tour.

**Directions from Exit 38 on Interstate 55:** Merge onto US-84 East and continue for 12.2 miles. Turn right onto Steve Loop Southeast, continue for 0.2 miles. Then turn right onto Dickerson Lane Southeast, continue for 1.1 miles. Destination is on the right.

[GOOGLE MAP LINK](#)



*Call me today!*

**BLAKE SASSER**, REALTOR®  
Blake@TomSmithLand.com  
601.990.5070 office | 601.757.5027 cell



[TomSmithLandandHomes.com](http://TomSmithLandandHomes.com)



*Call me today!*

**BLAKE SASSER, REALTOR®**  
Blake@TomSmithLand.com  
601.990.5070 **office** | 601.757.5027 **cell**



**TomSmithLandandHomes.com**

Information is believed to be accurate but not guaranteed.

# Aerial Map



Click [here](#) for an interactive map link.

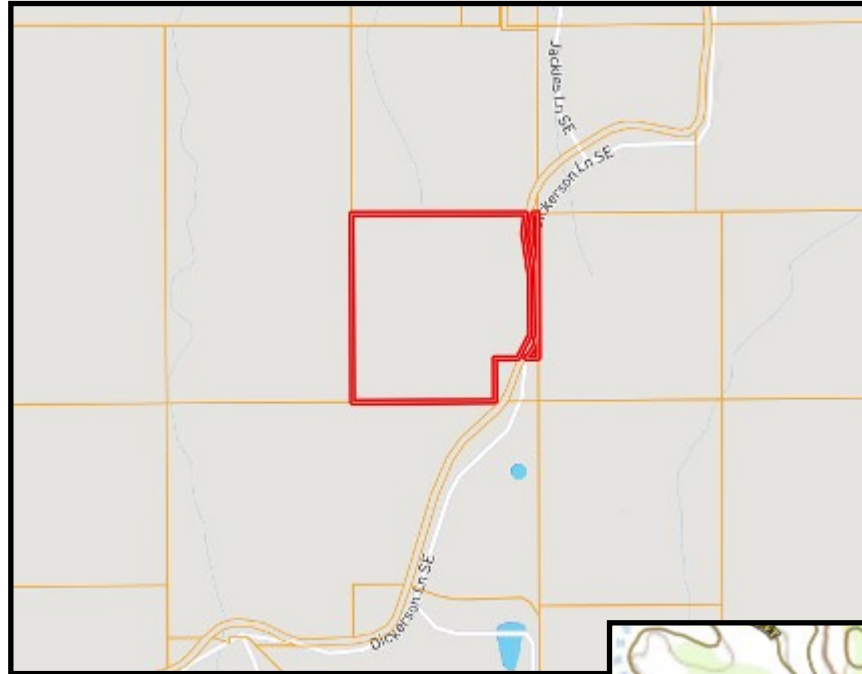
*Call me today!*

**BLAKE SASSER**, REALTOR®  
Blake@TomSmithLand.com  
601.990.5070 **office** | 601.757.5027 **cell**



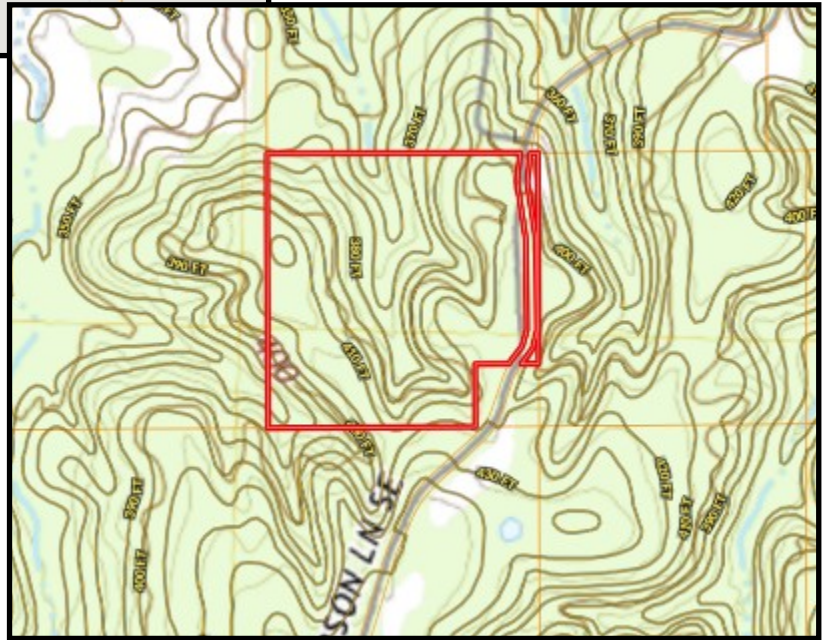
**TomSmithLandandHomes.com**

Information is believed to be accurate but not guaranteed.



Ownership  
Map

Topo  
Map



*Call me today!*

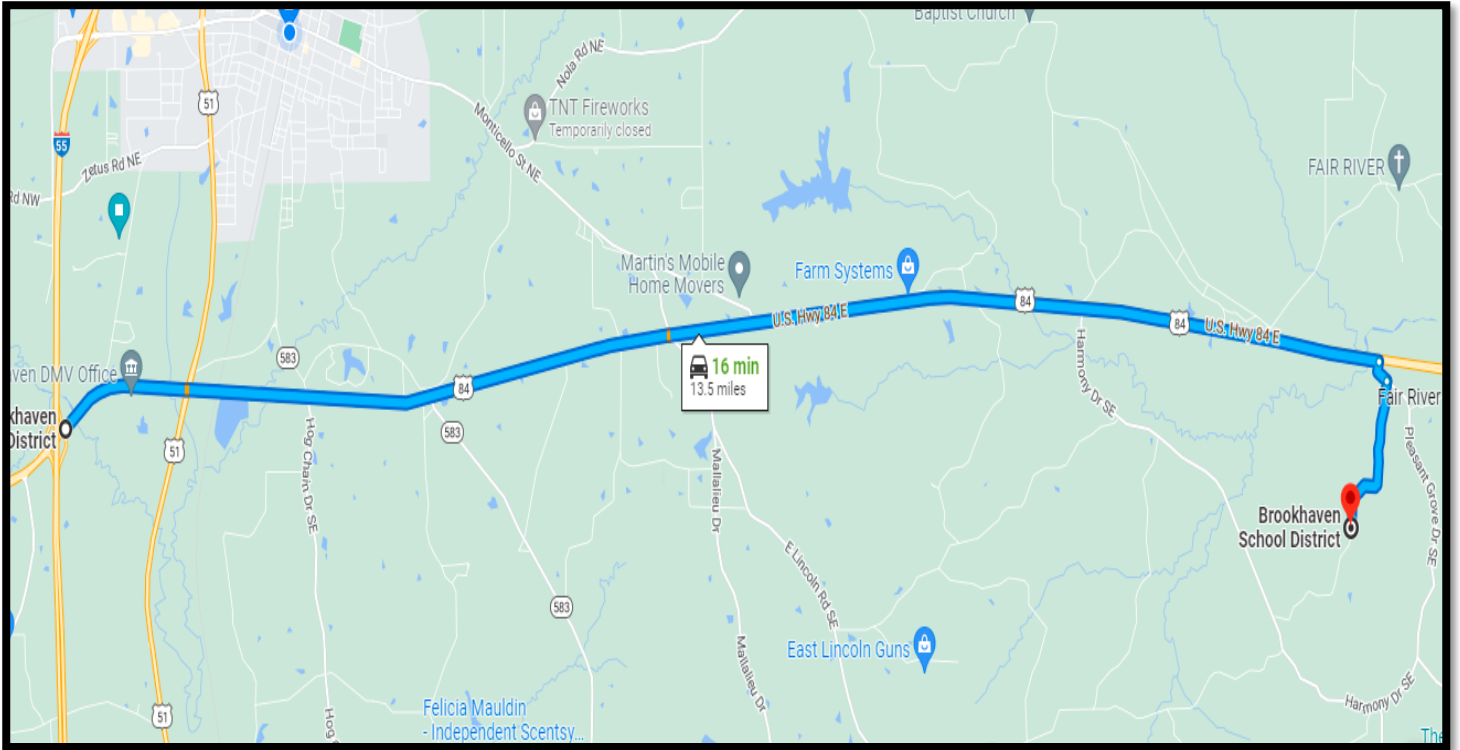
**BLAKE SASSER**, REALTOR®  
Blake@TomSmithLand.com  
601.990.5070 office | 601.757.5027 cell



**TomSmithLandandHomes.com**

Information is believed to be accurate but not guaranteed.

# Directional Map



**Directions from Exit 38 on Interstate 55:** Head Northeast toward US-84 East. Merge onto US-84 East and continue for 12.2 miles. Turn right onto Steve Loop Southeast continue for 0.2 miles. Then turn right onto Dickerson Lane Southeast, continue for 1.1 miles. Destination is on the right.

[GOOGLE MAP LINK](#)

*Call me today!*

**BLAKE SASSER, REALTOR®**  
Blake@TomSmithLand.com  
601.990.5070 office | 601.757.5027 cell



**TomSmithLandandHomes.com**

Information is believed to be accurate but not guaranteed.