

# Beautifully Renovated Home in Bolivar County Cleveland, MS



**\$250,000**

**Address: 212 N. Leflore Ave. Cleveland, MS 38732**

Check out this three bedroom, two bathroom renovated home in Cleveland, Bolivar County. The kitchen has new countertops, floors, and backsplash. The hardwood floors have been refinished throughout the home. The sunroom is warm and welcoming when you walk inside the back door. My favorite room is the breakfast room. I can imagine sitting there drinking coffee and eating breakfast. There are two bedrooms, one bathroom downstairs, and one bedroom and bathroom upstairs and a sitting area. The backyard is a sanctuary on its own, so very peaceful, and plenty of shade from the mature trees. There is a storage shed out back for plenty of extra storage. Why wait? Call today for your private showing! (662)719-4720 or (662)441-2500.

**Directions from the intersection of Hwy 61 and Hwy 8 in Cleveland, MS:** Travel West on Hwy 8 towards N. Chrisman Ave, in 0.6 miles turn left onto N. Leflore Ave and in 0.1 miles the destination is on the left. **Click for Google Map Directions.**



*Call me today!*

**TRACEY BELL**, MANAGING BROKER  
Tracey@TomSmithLand.com  
662.441.2500 **office** | 662.719.4720 **cell**



**TomSmithLandandHomes.com**

Information is believed to be accurate but not guaranteed.





*Call me today!*

**TRACEY BELL**, MANAGING BROKER  
Tracey@TomSmithLand.com  
662.441.2500 **office** | 662.719.4720 **cell**



**TomSmithLandandHomes.com**

Information is believed to be accurate but not guaranteed.





*Call me today!*

**TRACEY BELL**, MANAGING BROKER  
Tracey@TomSmithLand.com  
662.441.2500 **office** | 662.719.4720 **cell**



**TomSmithLandandHomes.com**

Information is believed to be accurate but not guaranteed.





*Call me today!*

**TRACEY BELL**, MANAGING BROKER  
 Tracey@TomSmithLand.com  
 662.441.2500 **office** | 662.719.4720 **cell**



**TomSmithLandandHomes.com**

Information is believed to be accurate but not guaranteed.





*Call me today!*

**TRACEY BELL**, MANAGING BROKER  
Tracey@TomSmithLand.com  
662.441.2500 **office** | 662.719.4720 **cell**



Expect More. Get More.

**TomSmithLandandHomes.com**

Information is believed to be accurate but not guaranteed.





*Call me today!*

**TRACEY BELL**, MANAGING BROKER  
Tracey@TomSmithLand.com  
662.441.2500 **office** | 662.719.4720 **cell**



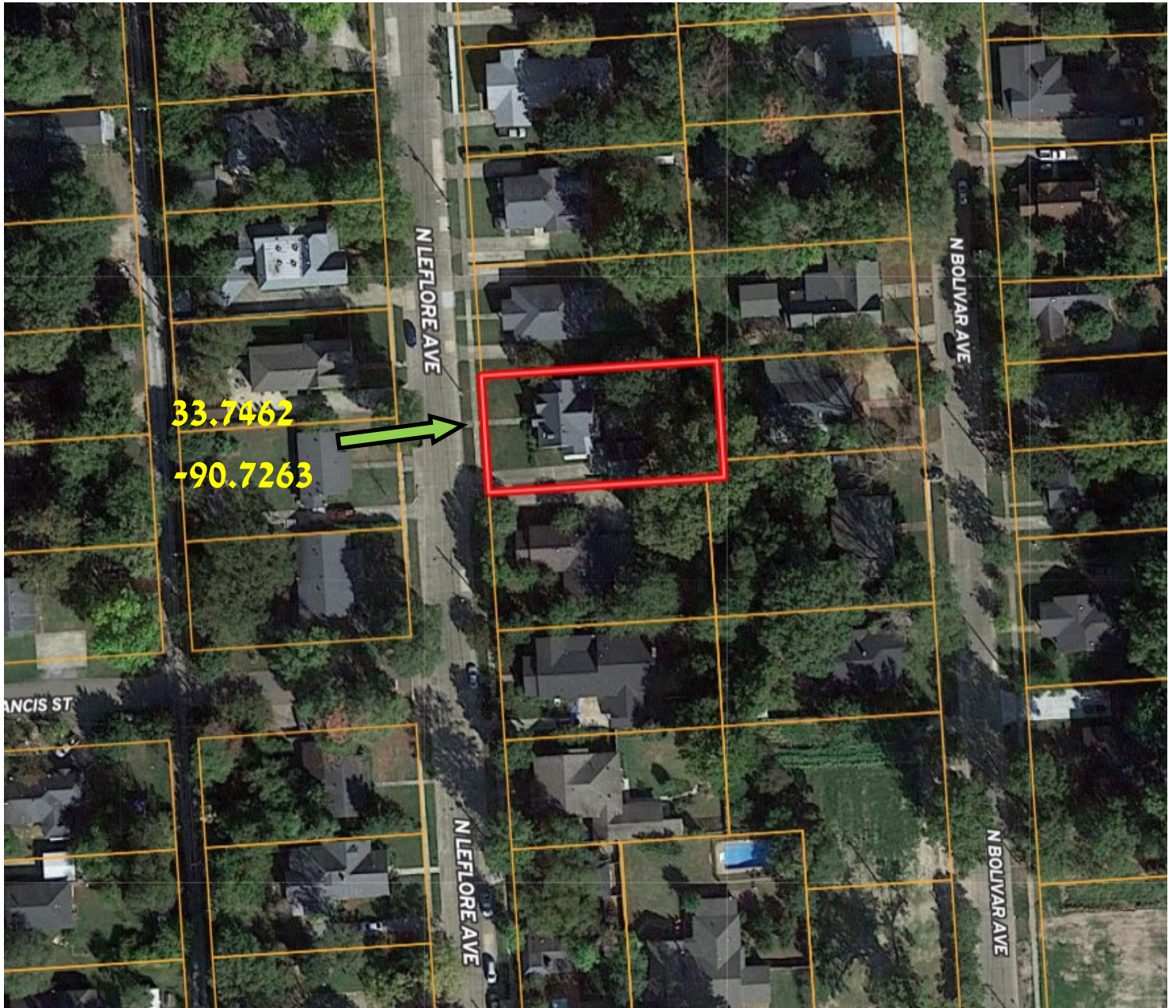
Expect More. Get More.

**TomSmithLandandHomes.com**

Information is believed to be accurate but not guaranteed.



# AERIAL MAP



[Click for Interactive Map](#)

*Call me today!*

**TRACEY BELL**, MANAGING BROKER  
Tracey@TomSmithLand.com  
662.441.2500 **office** | 662.719.4720 **cell**

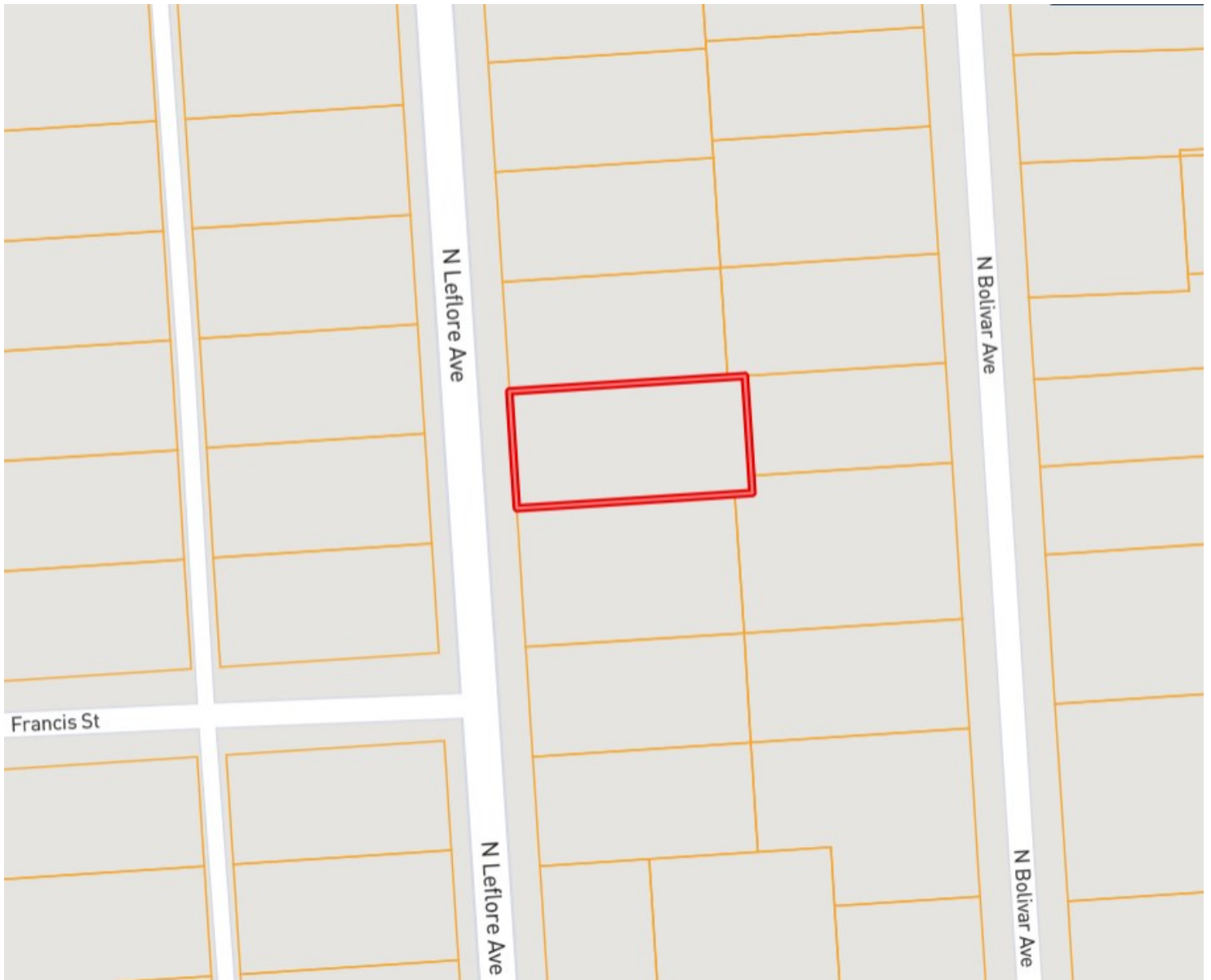


[TomSmithLandandHomes.com](http://TomSmithLandandHomes.com)

Information is believed to be accurate but not guaranteed.



# OWNERSHIP MAP



*Call me today!*

**TRACEY BELL**, MANAGING BROKER  
Tracey@TomSmithLand.com  
662.441.2500 **office** | 662.719.4720 **cell**

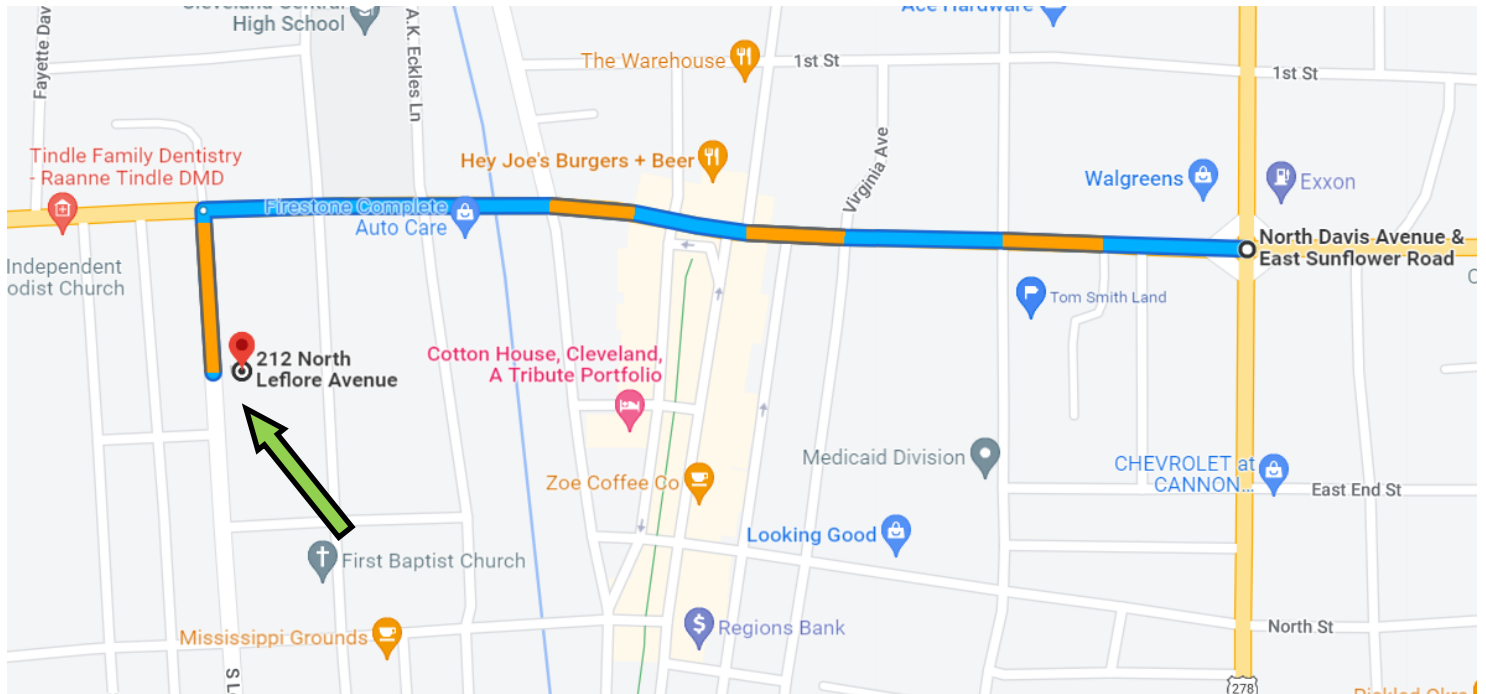


**TomSmithLandandHomes.com**

Information is believed to be accurate but not guaranteed.



# DIRECTIONAL MAP



**Address: 212 North Leflore Ave. Cleveland, MS 38732**

**Directions from the intersection of Hwy 61 and Hwy 8 in Cleveland, MS:** Travel West on Hwy 8 towards N. Chrisman Ave, in 0.6 miles turn left onto N. Leflore Ave and in 0.1 miles the destination is on the left. **Click for Google Map Directions.**



*Call me today!*

**TRACEY BELL**, MANAGING BROKER  
Tracey@TomSmithLand.com  
662.441.2500 **office** | 662.719.4720 **cell**



**TomSmithLandandHomes.com**

Information is believed to be accurate but not guaranteed.