

Charming Greenwood Home

723 Crockett Avenue Greenwood, MS 38930



\$139,500

Welcome to your new charming home in Greenwood, MS! This newly renovated, 1,839 square foot, three bedroom, two bathroom home has two stories and features an office, loft, and a large fenced backyard and covered patio. The home also has beautiful wood and tile flooring, two living areas, and a dining room with the kitchen nearby. In addition to renovations on the house's interior, the exterior also has new paint, with the roof only being 2-3 years old. This Leflore County home won't last long. Give Anthony a call for your private showing today!



Call me today!

ANTHONY STEEN, REALTOR®
Anthony@TomSmithLand.com
662.441.2500 **office** | 662.645.5151 **cell**



TomSmithLandandHomes.com

Information is believed to be accurate but not guaranteed.



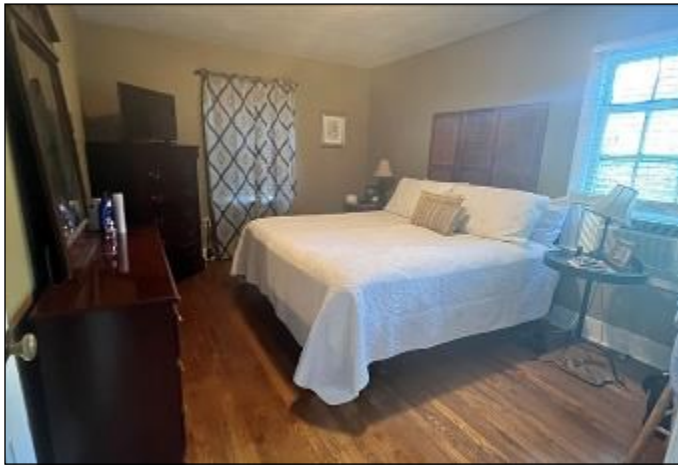
Call me today!

ANTHONY STEEN, REALTOR®
Anthony@TomSmithLand.com
662.441.2500 **office** | 662.645.5151 **cell**



TomSmithLandandHomes.com

Information is believed to be accurate but not guaranteed.



Call me today!

ANTHONY STEEN, REALTOR®
 Anthony@TomSmithLand.com
 662.441.2500 **office** | 662.645.5151 **cell**

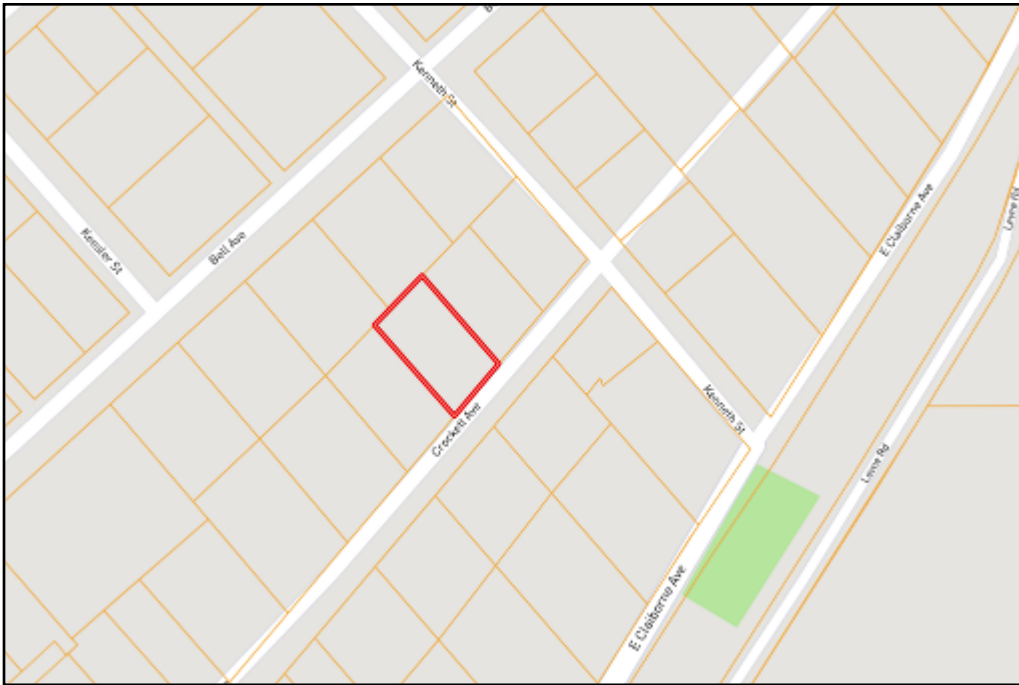
**Tom
 Smith
 LAND AND
 HOMES**

Expect More. Get More.



TomSmithLandandHomes.com

Information is believed to be accurate but not guaranteed.



OWNERSHIP MAP



AERIAL MAP

Call me today!

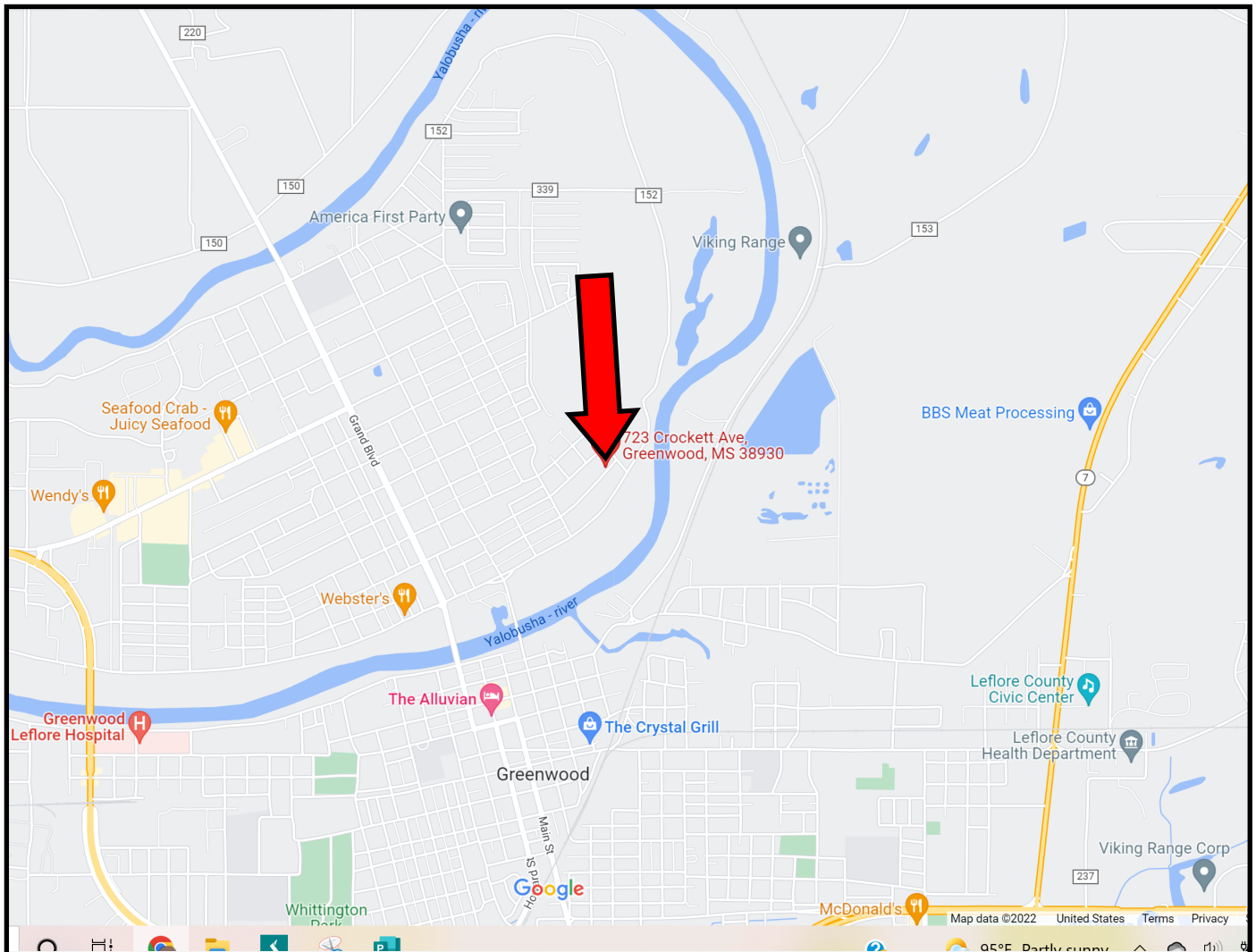
ANTHONY STEEN, REALTOR®
Anthony@TomSmithLand.com
662.441.2500 **office** | 662.645.5151 **cell**



TomSmithLandandHomes.com

Information is believed to be accurate but not guaranteed.

DIRECTIONAL MAP



Directions from the Intersection of Hwy 49 and Hwy 82 in Greenwood, MS: Take Main Street from Hwy 82, and travel 1.2 miles. Turn right on to Pearl St., and then take the immediate left on Walthall St. and travel .5 miles. Turn right on East Claiborne St., and then take the next left on Weightman St. Turn right on Crockett Ave., and after .2 miles, the home will be on your left.

723 Crockett Ave Greenwood, MS 38930



Call me today!

ANTHONY STEEN, REALTOR®
Anthony@TomSmithLand.com
662.441.2500 office | 662.645.5151 cell



TomSmithLandandHomes.com

Information is believed to be accurate but not guaranteed.