

COZY CLEVELAND HOME IN BOLIVAR COUNTY, MS

646 N Bayou Avenue Cleveland, MS 38732



- **3 BED/2 BATH**
- **1,296 SF**
- **STORAGE ROOM**
- **SHED**
- **1 CAR CARPORT**



\$155,000

ARE YOU LOOKING FOR A SMALL FAMILY HOME OR POTENTIAL RENTAL PROPERTY? LOOK NO FURTHER! THIS BOLIVAR COUNTY, MS HOME FEATURES 1,296 SF, THREE BEDROOMS, AND TWO BATHROOMS. THE HOUSE IS SITUATED ON A .50+/- ACRE SHADED LOT AND HAS A STORAGE ROOM, SHED, AND A ONE-CAR CARPORT. THE BEDROOMS ARE SPACIOUS, AND THE PRIMARY BEDROOM HAS A LARGE WALK-IN CLOSET AND JACUZZI TUB. RECENT UPDATES WERE MADE, INCLUDING UPDATING THE KITCHEN, FLOORING, AND PAINT. IF YOU ARE READY TO SEE THIS COLLEGE RENTAL OR WANT TO PURCHASE YOUR FIRST HOME, GIVE ANTHONY STEEN A CALL FOR YOUR PRIVATE SHOWING TODAY!



Call me today!

ANTHONY STEEN, REALTOR®
Anthony@TomSmithLand.com
662.441.2500 **office** | 662.645.5151 **cell**



TomSmithLandandHomes.com

Information is believed to be accurate but not guaranteed.



Call me today!

ANTHONY STEEN, REALTOR®

Anthony@TomSmithLand.com

662.441.2500 office | 662.645.5151 cell

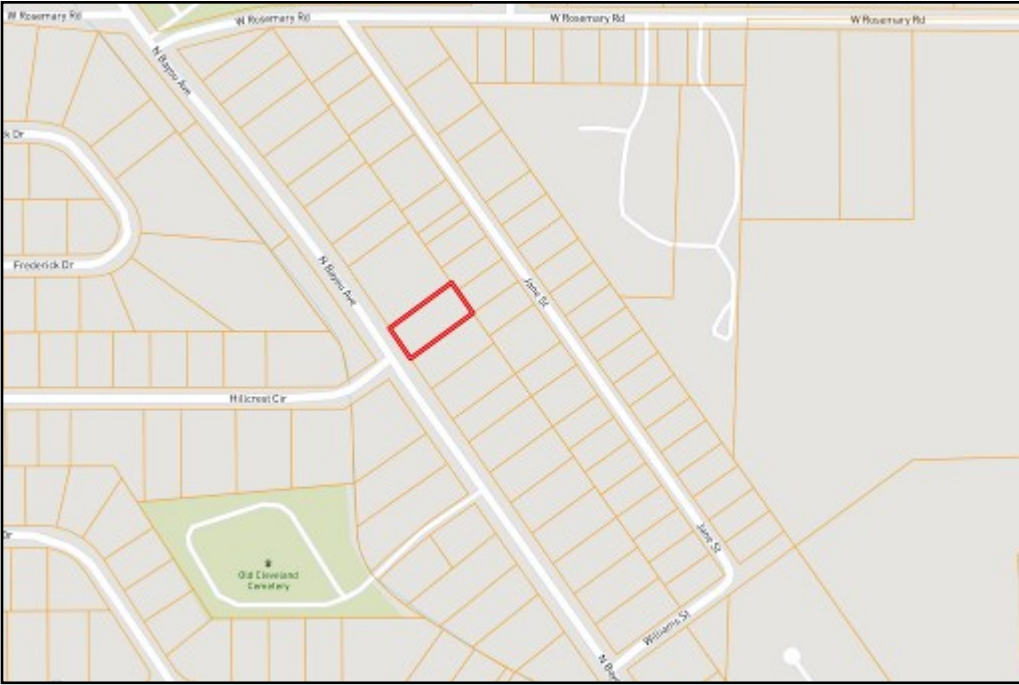


Expect More. Get More.



TomSmithLandandHomes.com

Information is believed to be accurate but not guaranteed.



OWNERSHIP MAP



AERIAL MAP

[Click Here for an
Interactive Map](#)

Call me today!

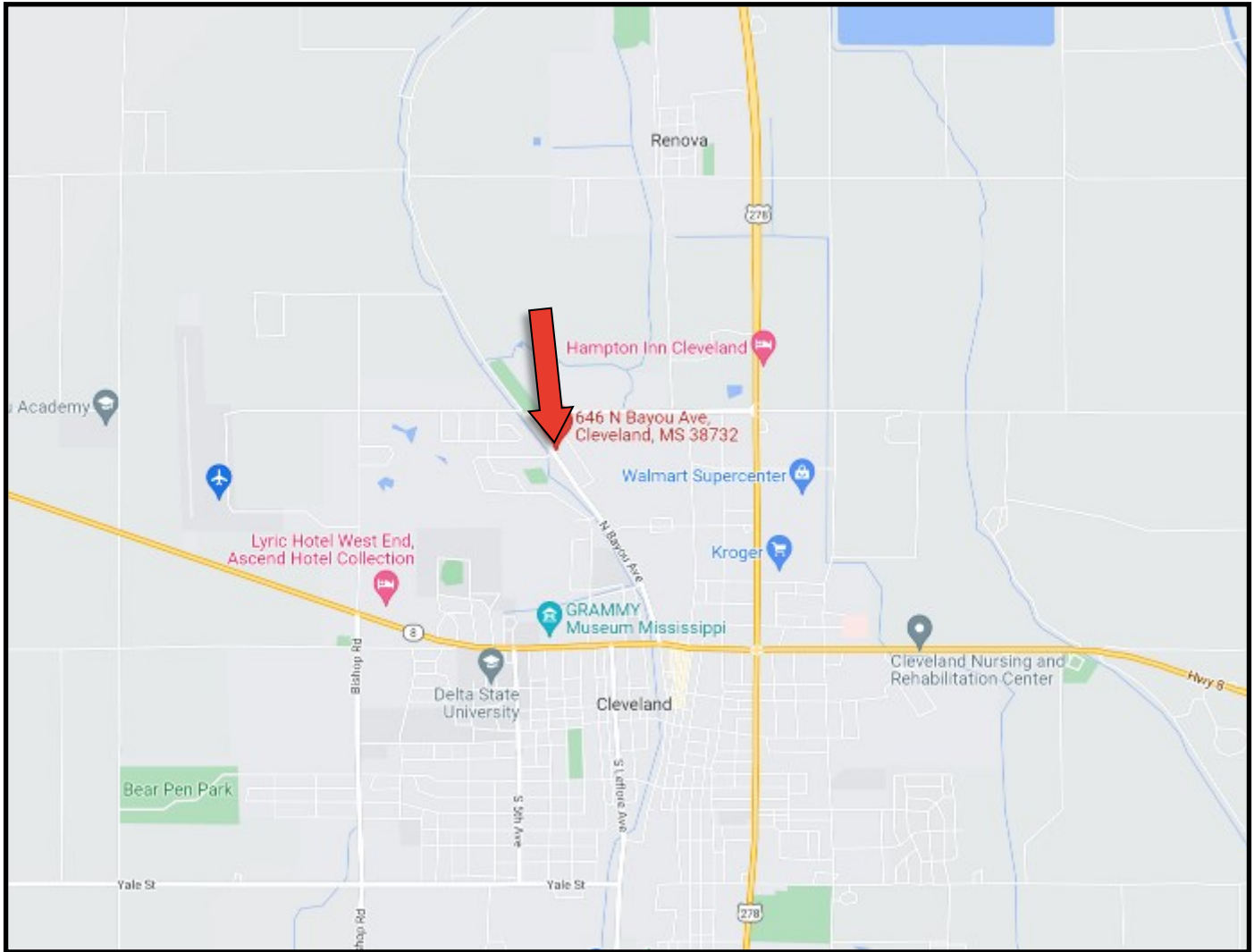
ANTHONY STEEN, REALTOR®
Anthony@TomSmithLand.com
662.441.2500 **office** | 662.645.5151 **cell**



TomSmithLandandHomes.com

Information is believed to be accurate but not guaranteed.

DIRECTIONAL MAP



**DIRECTIONS FROM THE INTERSECTION OF HWY 8 AND HWY 278 IN CLEVELAND, MS:
TRAVEL WEST ON HWY 8/NORTH SUNFLOWER RD. FOR .4 MILES. TURN RIGHT ON N
BAYOU AVENUE FOR 1 MILE. THE HOME WILL BE ON YOUR RIGHT.**

646 N BAYOU AVENUE, CLEVELAND, MS 38732



*Call me
today!*

ANTHONY STEEN, REALTOR®
Anthony@TomSmithLand.com
662.441.2500 **office** | 662.645.5151 **cell**



TomSmithLandandHomes.com

Information is believed to be accurate but not guaranteed.