

Newly Renovated Delta Home in Bolivar County

349 Brooks Avenue, Boyle, MS



\$118,000

Welcome to your newly renovated home in Boyle, MS! This 744 SF, three bed and one and half bath, Bolivar County home sits on a .34± acre lot with plenty of room for parking. The home was recently remodeled with new paint, windows, and flooring. The back of the home features a large back patio that would make a great hangout to grill. This home would be the perfect rental home for college students with Delta State in Cleveland, MS, only 7 minutes away. Call Anthony Steen to schedule your private showing today!



2011-2022
NATIONAL
BEST
BROKERAGES

*Call me
today!*

ANTHONY STEEN, REALTOR®
Anthony@TomSmithLand.com
662.441.2500 office | 662.645.5151 cell



TomSmithLandandHomes.com

Information is believed to be accurate but not guaranteed.



Call me today!

ANTHONY STEEN, REALTOR®
Anthony@TomSmithLand.com
662.441.2500 office | 662.645.5151 cell



TomSmithLandandHomes.com

Information is believed to be accurate but not guaranteed.



Call me today!

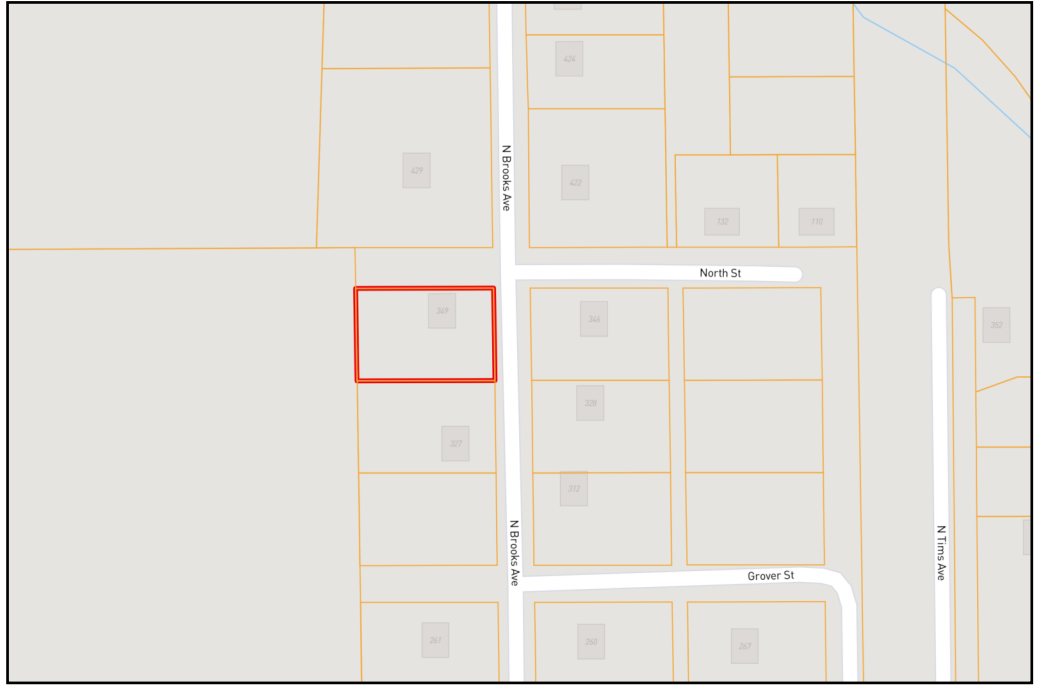
ANTHONY STEEN, REALTOR®
Anthony@TomSmithLand.com
662.441.2500 office | 662.645.5151 cell



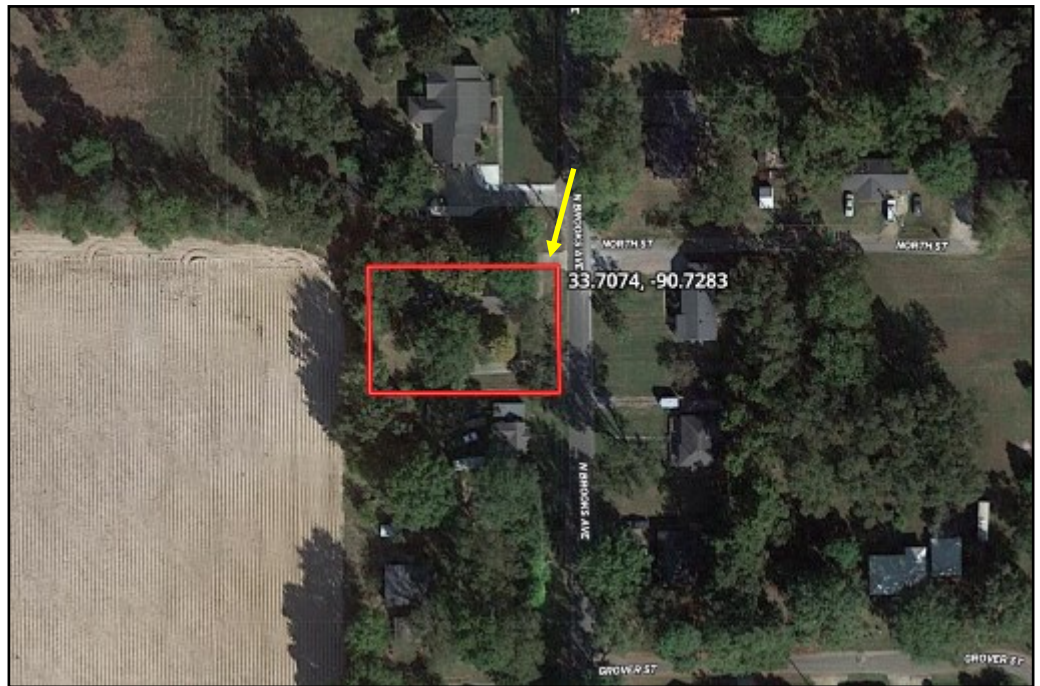
TomSmithLandandHomes.com

Information is believed to be accurate but not guaranteed.

OWNERSHIP MAP



AERIAL MAP



INTERACTIVE MAP

Call me today!

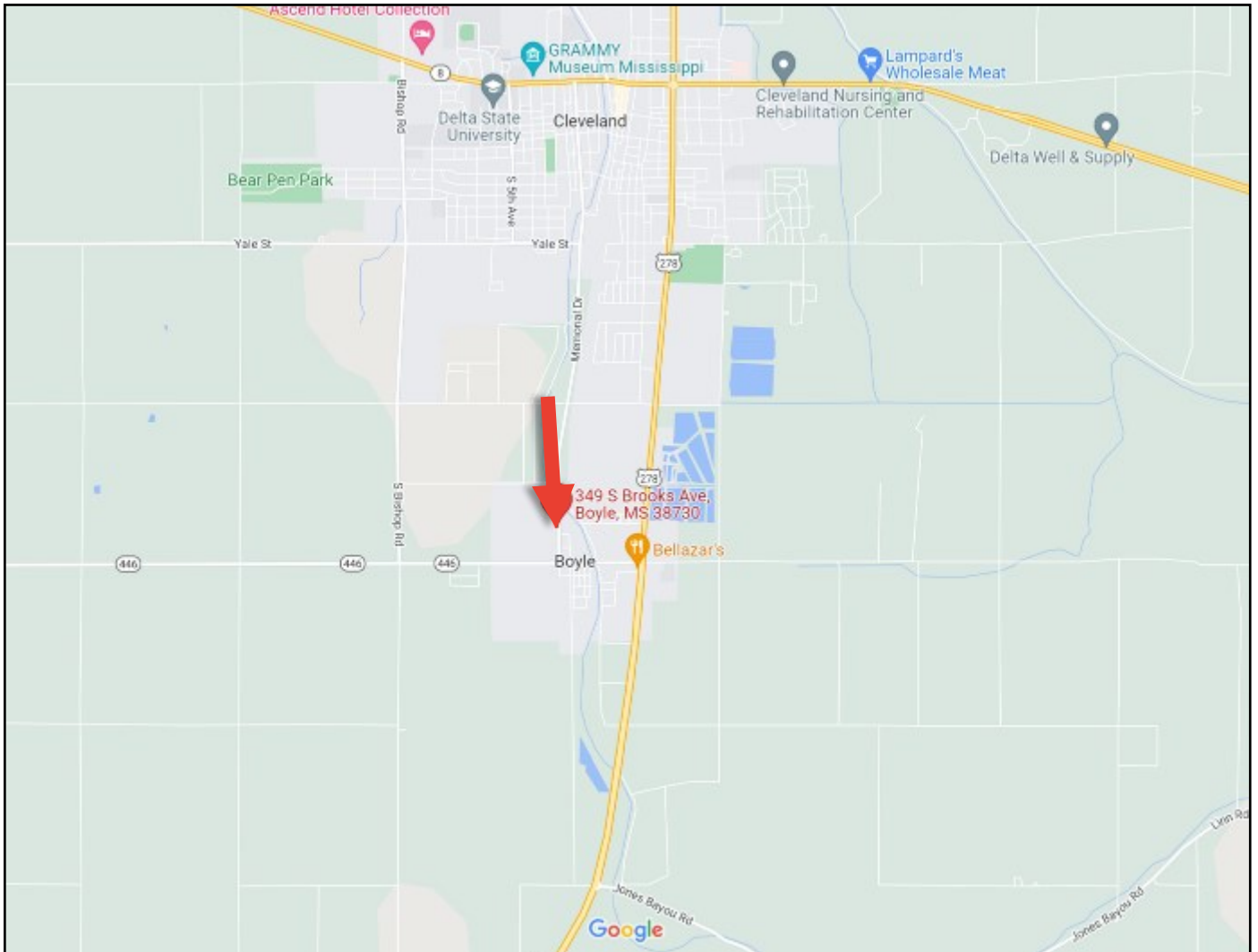
ANTHONY STEEN, REALTOR®
Anthony@TomSmithLand.com
662.441.2500 office | 662.645.5151 cell



TomSmithLandandHomes.com

Information is believed to be accurate but not guaranteed.

DIRECTIONAL MAP



Directions from the Intersection of Hwy 61 and Hwy 8 in Cleveland, MS: Travel Hwy 61 for 2 miles. Turn right on to Laughlin Rd., and take the next left on to Memorial Dr./S Brooks Ave. After approximately .9 miles, the home will be on your right.

349 S Brooks Ave, Boyle, MS 38730



Call me today!

ANTHONY STEEN, REALTOR®
Anthony@TomSmithLand.com
662.441.2500 office | 662.645.5151 cell



TomSmithLandandHomes.com

Information is believed to be accurate but not guaranteed.