

3 Bedroom, 1.5 Bathroom Home in Boyle 349 Brooks Avenue, Boyle, MS | \$129,000

This three-bedroom, one-and-a-half-bathroom home spans 936± SF and has recently had many updates throughout in Boyle, Bolivar County, MS. The spacious living room flows seamlessly into the kitchen, which features a gas range and stainless-steel refrigerator. All bedrooms and bathrooms are conveniently located on the left side of the home. The utility room leads to a back porch with vaulted ceilings, providing a relaxing outdoor space. The residence is on a 0.39+/- acre lot with a wrap-around driveway leading to a large concrete parking pad. Give Abby Abernathy a call to schedule your private showing!



**ABBY
ABERNATHY**

REALTOR

Office: 662-441-2500

Cell: 940-781-3137

Abby@TomSmithLand.com



Expect More. Get More.

A Real Estate Expert You Can Trust

TomSmithLandandHomes.com

Information is believed to be accurate but not guaranteed.





A Real Estate Expert *You Can Trust!*

ABBY ABERNATHY
REALTOR®

O: 662.441.2500 C: 940.781.3137

Abby@TomSmithLand.com

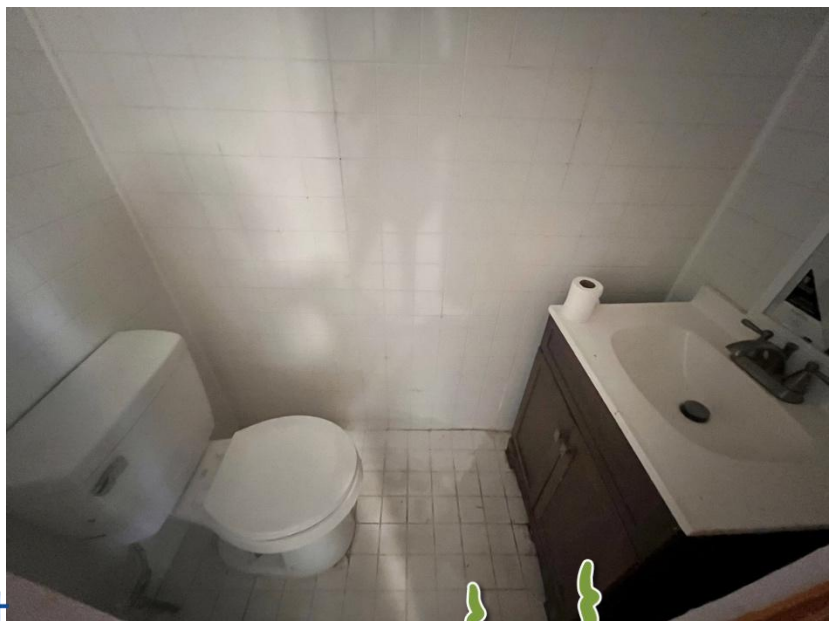
TomSmithLandandHomes.com

**Tom
Smith
LAND AND
HOMES**

Expect More. Get More.

LineReport
2011-2024
**BEST
BROKERAGES**

Information is believed to be accurate but not guaranteed.



A Real Estate Expert
You Can Trust!

ABBY ABERNATHY

REALTOR®

O: 662.441.2500 C: 940.781.3137

Abby@TomSmithLand.com

TomSmithLandandHomes.com

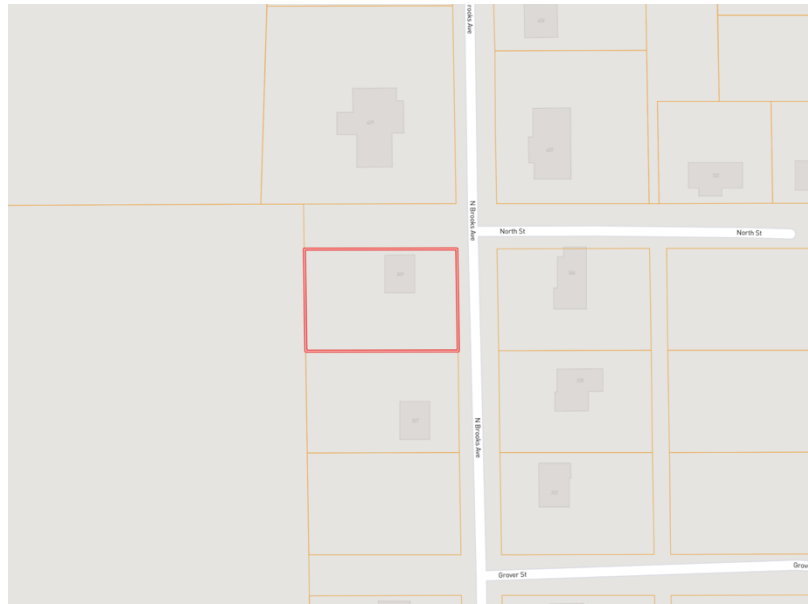


Expect More. Get More.

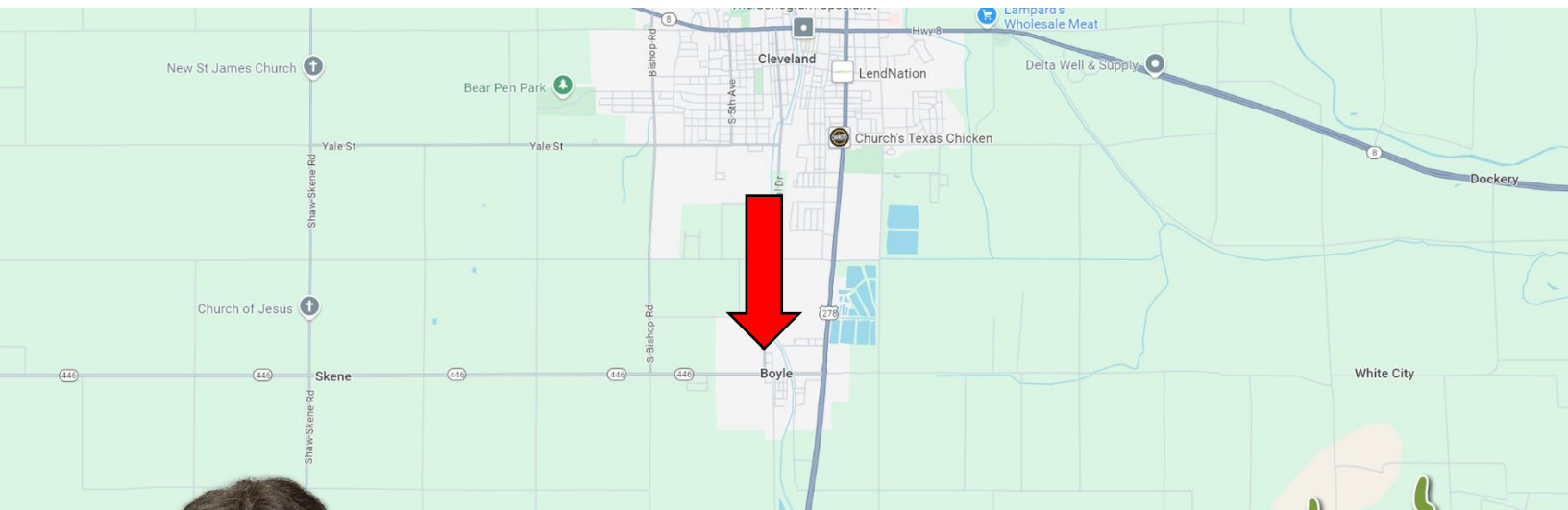


Information is believed to be accurate but not guaranteed.

Maps | [Interactive Map](#)



Directions from the intersection of Hwy 61 & Hwy 8 in Cleveland: Travel south on Hwy 61 for 2 miles. Turn right onto Laughlin Road and travel 0.6 miles. Turn left onto Memorial Drive. After 0.8 miles, the home will be on the right. [Google Maps Link](#)



ABBY
ABERNATHY
REALTOR®

Office: 662.441.2500
Cell: 940.781.3137
Abby@TomSmithLand.com



Expect More. Get More.

A Real Estate Expert You Can Trust

TomSmithLandandHomes.com

Information is believed to be accurate but not guaranteed.

