

3 BED/2 BATH GULF COAST HOME IN HANCOCK COUNTY, MS



10360 Avenue A, Bay St. Louis, MS

\$223,000

This three bedroom, two bath home is just minutes away from the Jourdan River in Hancock County, MS. If you are looking for a camp near great fishing on the Mississippi Gulf Coast, this could be the place for you! Upon entering the home through the front door, you will enter the living room and there are two bedrooms off of the living room and a bathroom. The kitchen, dining area and an additional bedroom and bathroom are located toward the back of the home. There is a spacious laundry room with a closet and room for a freezer. There is a storage room underneath the home and room to park two vehicles and a boat. The property is located in Bay St. Louis, MS, near all the Gulf Coast amenities, which include; fishing, boating, shopping, dining, casinos, and so much more! Call Tara Smith at 601.407.4315 or 601.990.5070 for a private showing!

Directions from US-90E and MS-43N in Bay St. Louis, MS: Travel northwest on MS-43N, in 1.0 mile, turn right onto Road 556, in .9 miles, turn left onto 19th St, in 338 feet, turn left onto Ave. A, in .1 miles the property is on the left.

Address: 10360 Avenue A, Bay St Louis, MS



Call me today!

TARA WALKER SMITH, REALTOR®
Tara@TomSmithHomes.com
601.990.5070 office | 601.407.4315 cell



TomSmithLandandHomes.com

Information is believed to be accurate but not guaranteed.



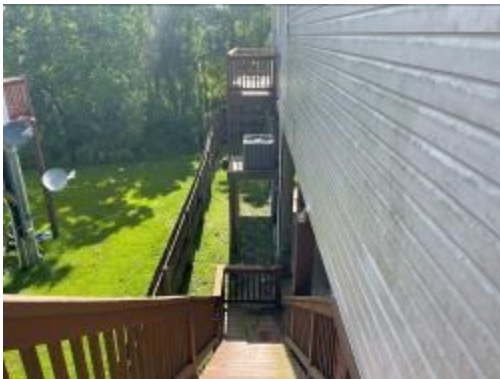
Call me today!

TARA WALKER SMITH, REALTOR®
Tara@TomSmithHomes.com
601.990.5070 office | 601.407.4315 cell



TomSmithLandandHomes.com

Information is believed to be accurate but not guaranteed.



Call me today!

TARA WALKER SMITH, REALTOR®
Tara@TomSmithHomes.com
601.990.5070 office | 601.407.4315 cell



Expect More. Get More.

TomSmithLandandHomes.com

Information is believed to be accurate but not guaranteed.

Aerial Map



[INTERACTIVE MAP LINK](#)

Call me today!

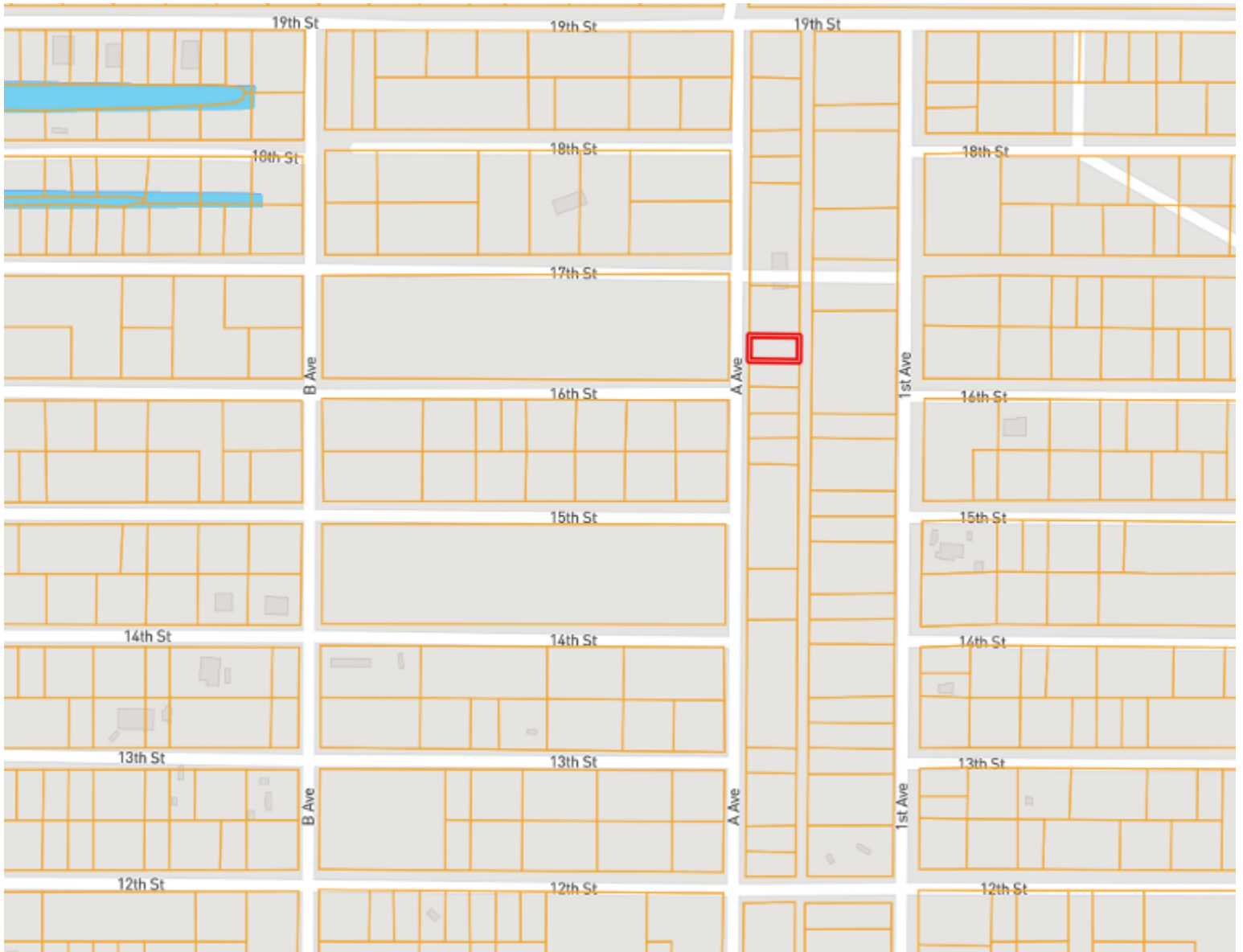
TARA WALKER SMITH, REALTOR®
Tara@TomSmithHomes.com
601.990.5070 **office** | 601.407.4315 **cell**



TomSmithLandandHomes.com

Information is believed to be accurate but not guaranteed.

Ownership Map



Call me today!

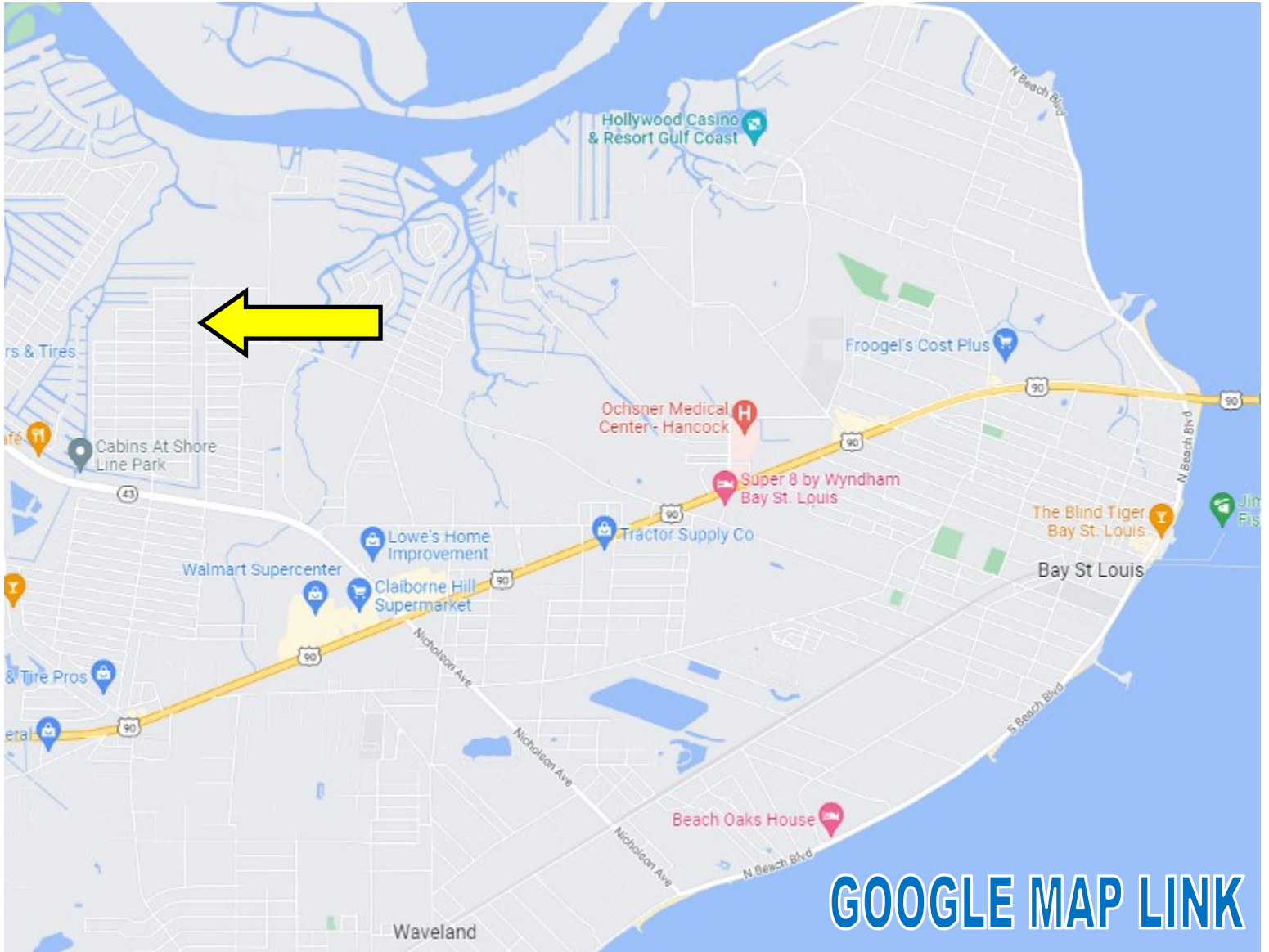
TARA WALKER SMITH, REALTOR®
Tara@TomSmithHomes.com
601.990.5070 office | 601.407.4315 cell



TomSmithLandandHomes.com

Information is believed to be accurate but not guaranteed.

Directional Map



Directions from US-90E and MS-43N in Bay St. Louis, MS: Travel northwest on MS-43N, in 1.0 mile, turn right onto Road 556, in .9 miles, turn left onto 19th St, in 338 feet, turn left onto Ave. A, in .1 miles the property is on the left.

Address: 10360 Avenue A, Bay St Louis, MS

Call me today!

TARA WALKER SMITH, REALTOR®
Tara@TomSmithHomes.com
601.990.5070 **office** | 601.407.4315 **cell**



TomSmithLandandHomes.com

Information is believed to be accurate but not guaranteed.