

3 BEDROOM/2 BATH HOME IN PARADISE!!! HANCOCK COUNTY, MS



\$360,000

11056 Missouri St, Bay St. Louis, MS

Rare waterfront home in Bay St. Louis, MS! This beautiful three bed, two bath, 1,461± square foot home in Hancock County, MS, will not last long! The home features an open floor plan, making the home open and relaxing. The covered back porch looks over the water and would make an excellent spot to wind down and enjoy the breeze. The property features a sun deck that extends down to the waterfront for yet another spot to relax or fish right from your backyard. The boat storage is directly in line with the boat ramp making your boat launches a breeze. This large double lot on the canal, leads to the Jourdan River. You will love the large, covered area downstairs if you enjoy entertaining. This property is located in Bay St. Louis, MS, near all of the amenities, the Mississippi Gulf Coast has to offer!

Directions from the intersection of US-90 and MS-43 in Bay St. Louis: Travel north on MS-43N, in 2.6 miles, turn right onto Lagan St., in .4 miles, continue onto Texas St., in .2 miles, turn right onto Missouri St, in .1 mile, the property will be on the right.

Address: 11056 Missouri St, Bay St. Louis, MS 39520 [GOOGLE MAP LINK](#)



Call me today!

TARA WALKER SMITH, REALTOR®
Tara@TomSmithHomes.com
601.990.5070 office | 601.407.4315 cell



TomSmithLandandHomes.com

Information is believed to be accurate but not guaranteed.



Call me today!

TARA WALKER SMITH, REALTOR®
Tara@TomSmithHomes.com
601.990.5070 office | 601.407.4315 cell



TomSmithLandandHomes.com

Information is believed to be accurate but not guaranteed.



Call me today!

TARA WALKER SMITH, REALTOR®
Tara@TomSmithHomes.com
601.990.5070 office | 601.407.4315 cell



TomSmithLandandHomes.com

Information is believed to be accurate but not guaranteed.



Call me today!

TARA WALKER SMITH, REALTOR®
Tara@TomSmithHomes.com
601.990.5070 office | 601.407.4315 cell



Expect More. Get More.

TomSmithLandandHomes.com

Information is believed to be accurate but not guaranteed.



Call me today!

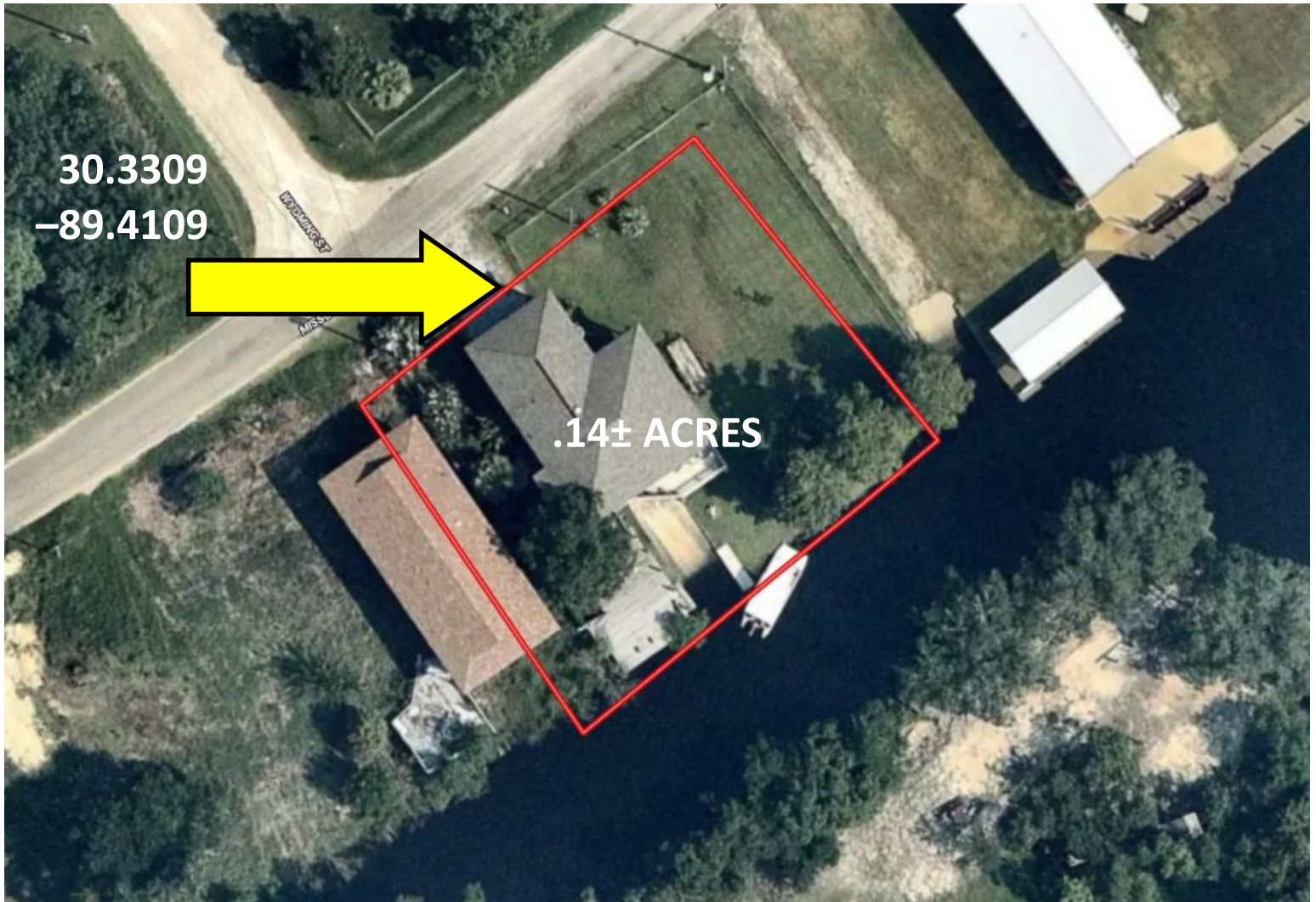
TARA WALKER SMITH, REALTOR®
Tara@TomSmithHomes.com
601.990.5070 office | 601.407.4315 cell



TomSmithLandandHomes.com

Information is believed to be accurate but not guaranteed.

Aerial Map



[INTERACTIVE MAP LINK](#)

Call me today!

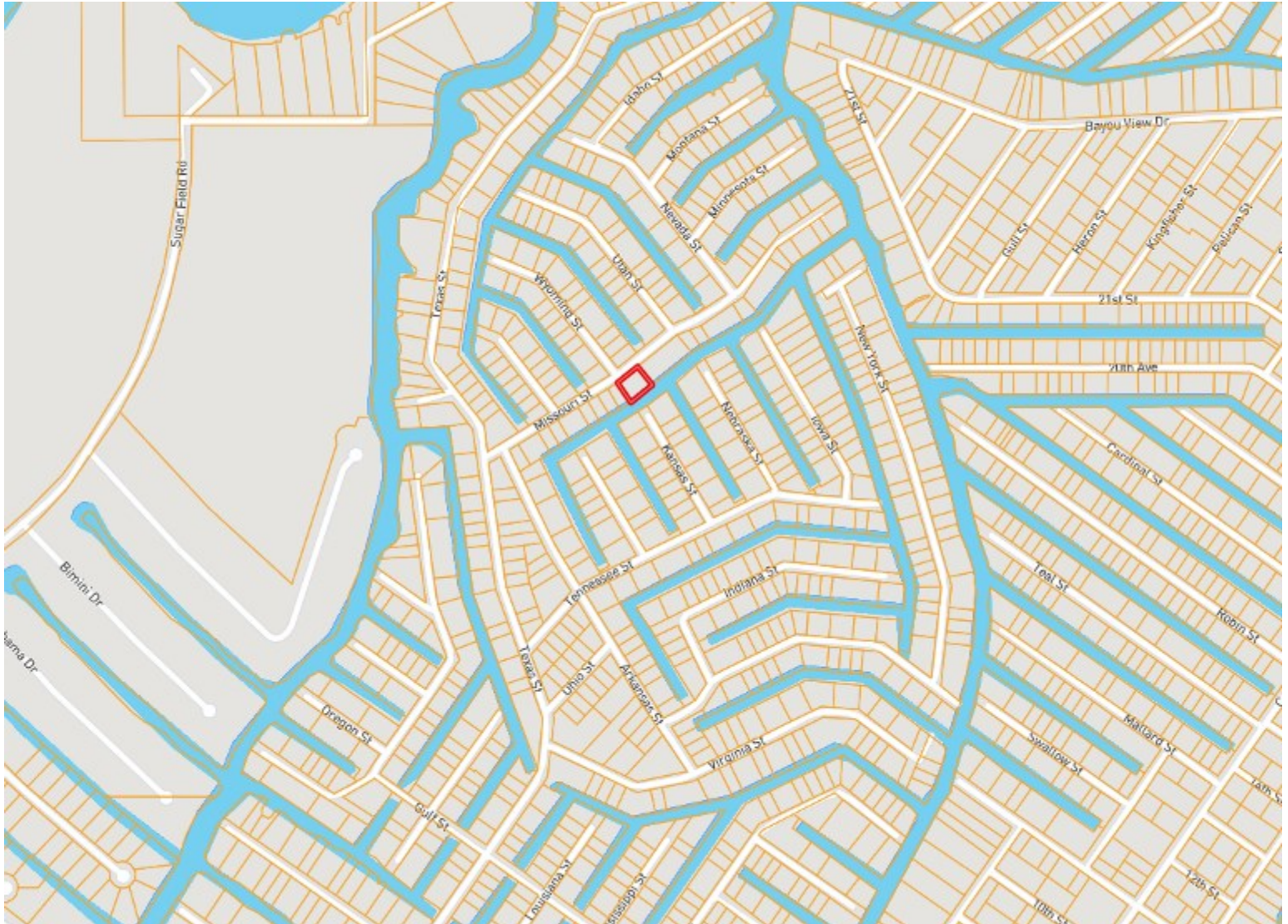
TARA WALKER SMITH, REALTOR®
Tara@TomSmithHomes.com
601.990.5070 **office** | 601.407.4315 **cell**



TomSmithLandandHomes.com

Information is believed to be accurate but not guaranteed.

Ownership Map



Call me today!

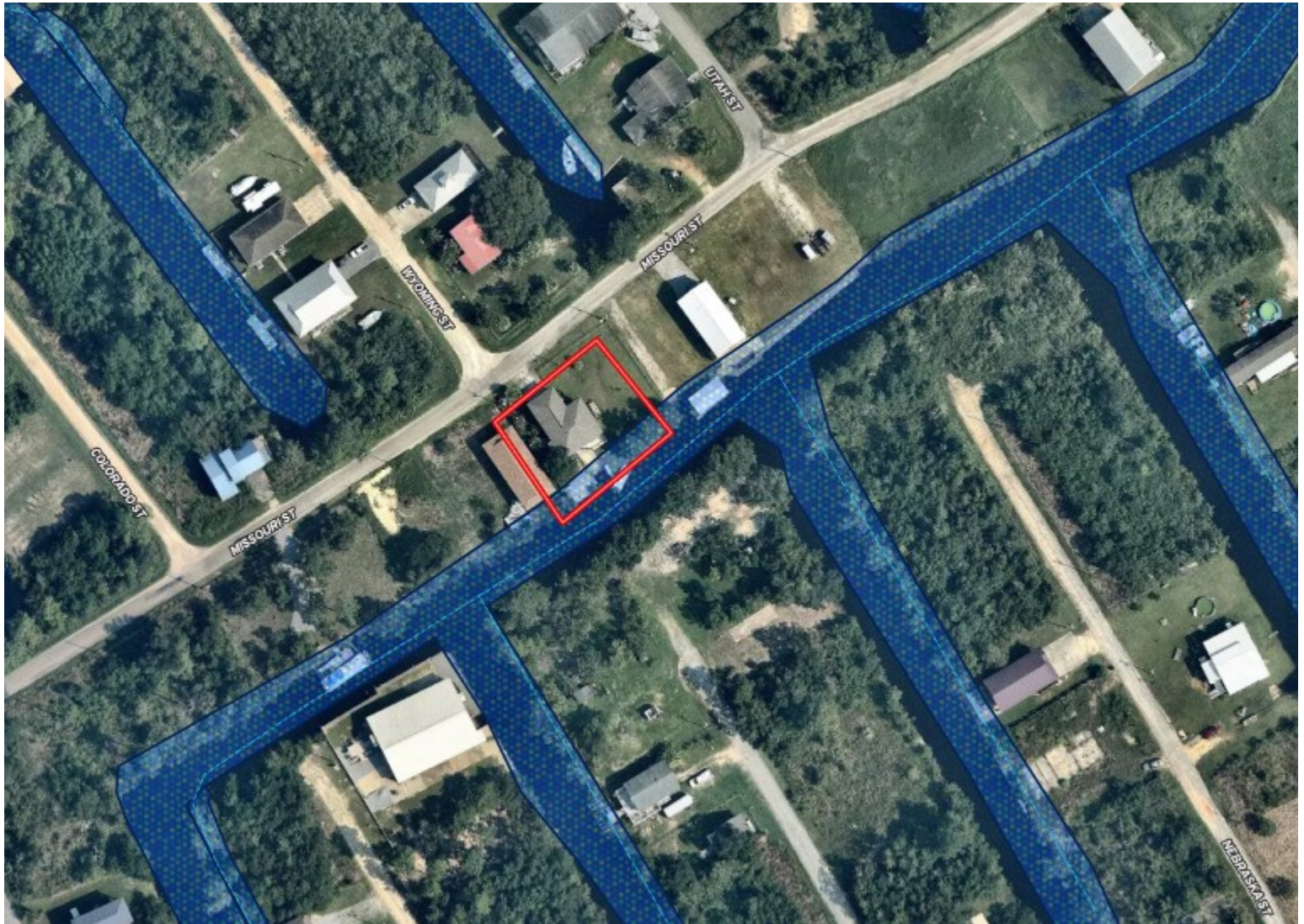
TARA WALKER SMITH, REALTOR®
Tara@TomSmithHomes.com
601.990.5070 **office** | 601.407.4315 **cell**



TomSmithLandandHomes.com

Information is believed to be accurate but not guaranteed.

Flood Map



Call me today!

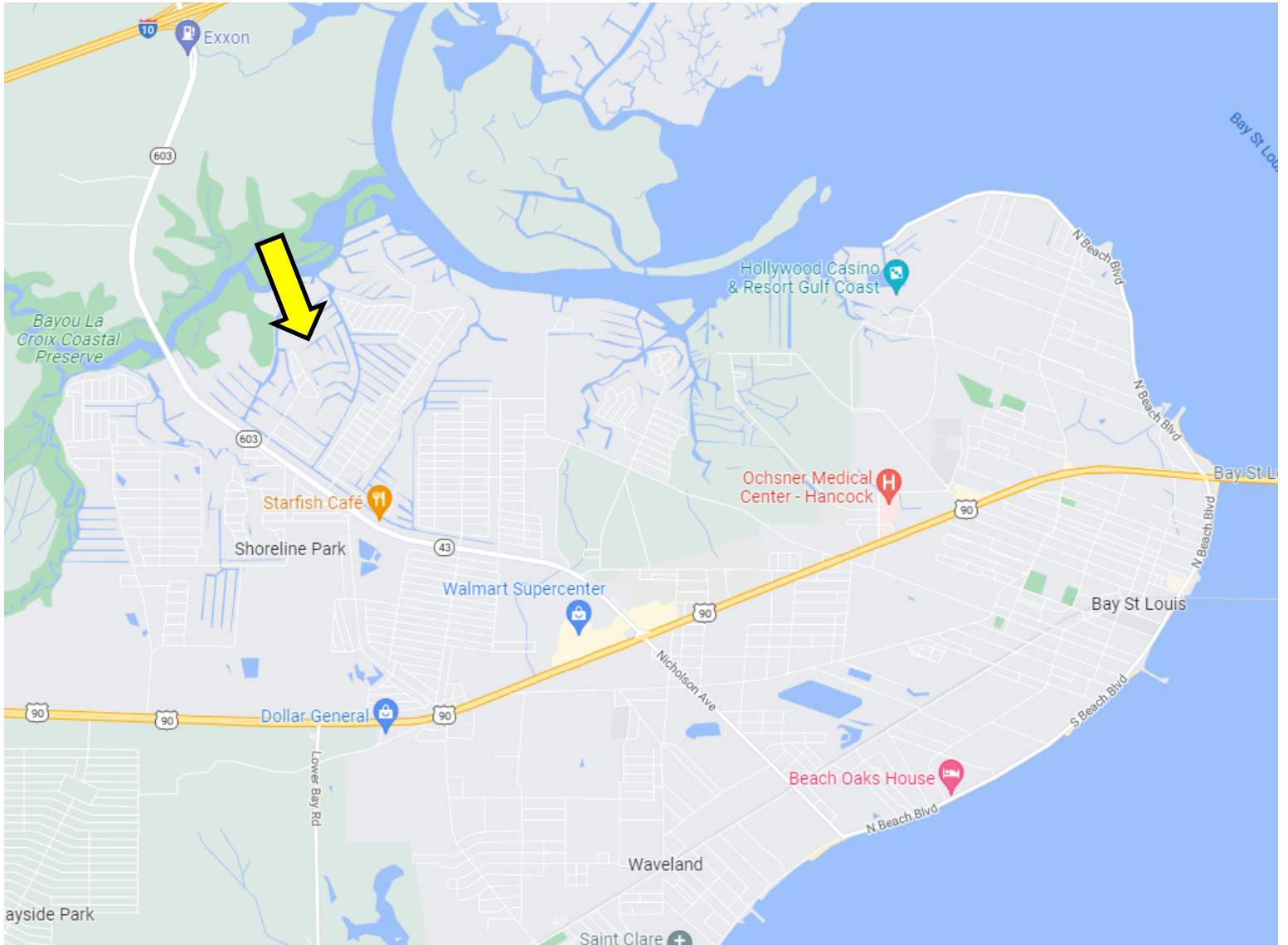
TARA WALKER SMITH, REALTOR®
Tara@TomSmithHomes.com
601.990.5070 office | 601.407.4315 cell



TomSmithLandandHomes.com

Information is believed to be accurate but not guaranteed.

Directional Map



Directions from the intersection of US-90 and MS-43 in Bay St. Louis: Travel north on MS-43N, in 2.6 miles, turn right onto Lagan St., in .4 miles, continue onto Texas St., in .2 miles, turn right onto Missouri St, in .1 mile, the property will be on the right.

Address: 11056 Missouri St, Bay St. Louis, MS 39520

GOOGLE MAP LINK

Call me today!

TARA WALKER SMITH, REALTOR®
Tara@TomSmithHomes.com
601.990.5070 **office** | 601.407.4315 **cell**



TomSmithLandandHomes.com

Information is believed to be accurate but not guaranteed.