

GREAT INVESTMENT OPPORTUNITY WITH EXCELLENT HUNTING

80± Acres in Neshoba County, MS



This 80± acre property in Neshoba County is the perfect tract for an investor or outdoorsman. This property is mainly made up of 70± acres of 8-10 year old pines and mixed hardwoods. There are already 5± acres in cleared areas that could be converted to food plots. An established road system throughout the property allows easy access to the entire tract. There are 5± acres of a hardwood break that would be great for duck hunting. There is lots of deer sign on the property, from tracks to scrapes all over, making this property a great investment or hunting tract with lots of ways to make it your own! There are also utilities available on the road. The property is located off of County Rd 509 at the end of Jimmy Keene Rd, in Union, MS. It is approximately one hour and fifteen minutes from Jackson, MS. Call Travis Smith today to schedule your private showing!



Call me today!

TRAVIS SMITH, REALTOR®
Travis@TomSmithLand.com
601.898.2772 office | 601.600.0428 cell



TomSmithLandandHomes.com

Information is believed to be accurate but not guaranteed.



Call me today!



TRAVIS SMITH, REALTOR®
Travis@TomSmithLand.com
601.898.2772 **office** | 601.600.0428 **cell**



Expect More. Get More.

TomSmithLandandHomes.com

Information is believed to be accurate but not guaranteed.



Call me today!



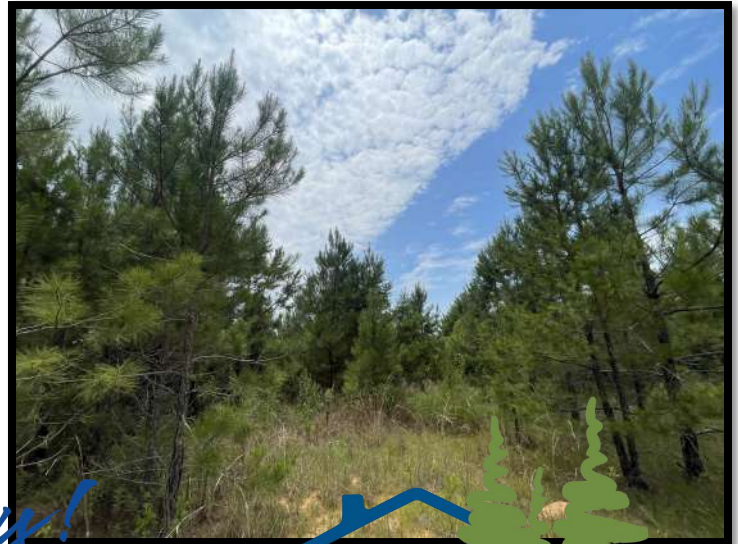
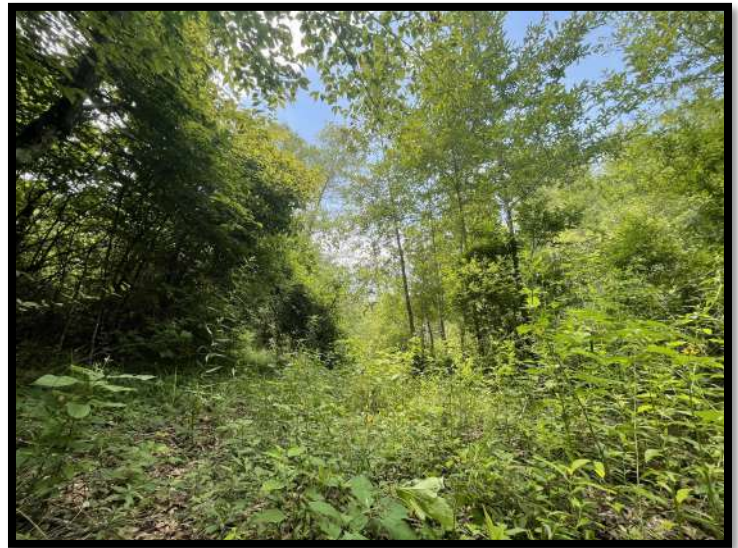
TRAVIS SMITH, REALTOR®
Travis@TomSmithLand.com
601.898.2772 **office** | 601.600.0428 **cell**



Expect More. Get More.

TomSmithLandandHomes.com

Information is believed to be accurate but not guaranteed.



Call me today!



TRAVIS SMITH, REALTOR®
Travis@TomSmithLand.com
601.898.2772 office | 601.600.0428 cell



Expect More. Get More.

TomSmithLandandHomes.com

Information is believed to be accurate but not guaranteed.

AERIAL MAP



CLICK [HERE](#) FOR AN INTERACTIVE MAP

*Call me
today!*

TRAVIS SMITH, REALTOR®
Travis@TomSmithLand.com
601.898.2772 office | 601.600.0428 cell



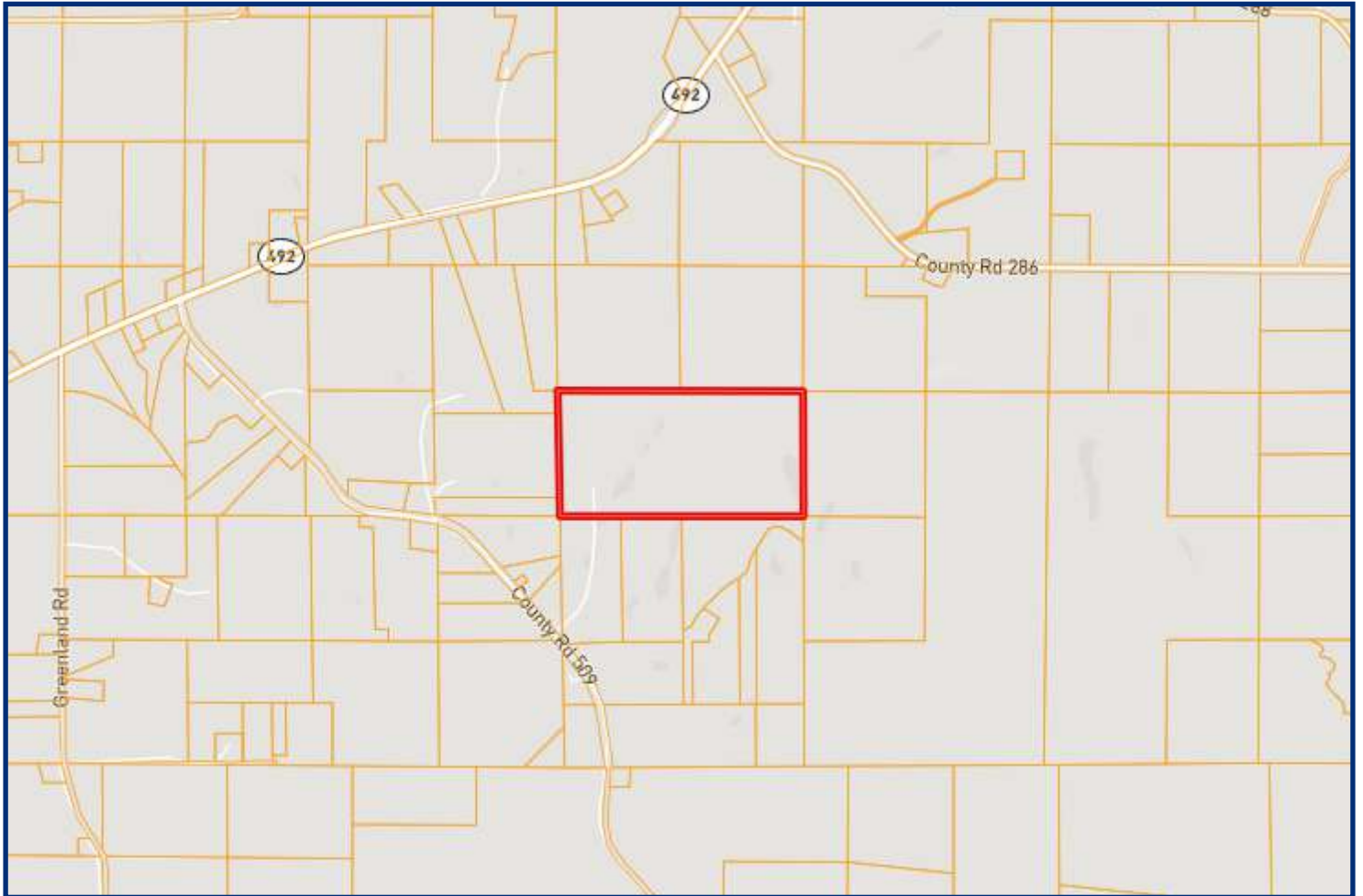
Expect More. Get More.



TomSmithLandandHomes.com

Information is believed to be accurate but not guaranteed.

OWNERSHIP MAP



Call me today!

TRAVIS SMITH, REALTOR®
Travis@TomSmithLand.com
601.898.2772 office | 601.600.0428 cell



Expect More. Get More.



TomSmithLandandHomes.com

Information is believed to be accurate but not guaranteed.

TOPO MAP



*Call me
today!*

TRAVIS SMITH, REALTOR®
Travis@TomSmithLand.com
601.898.2772 office | 601.600.0428 cell



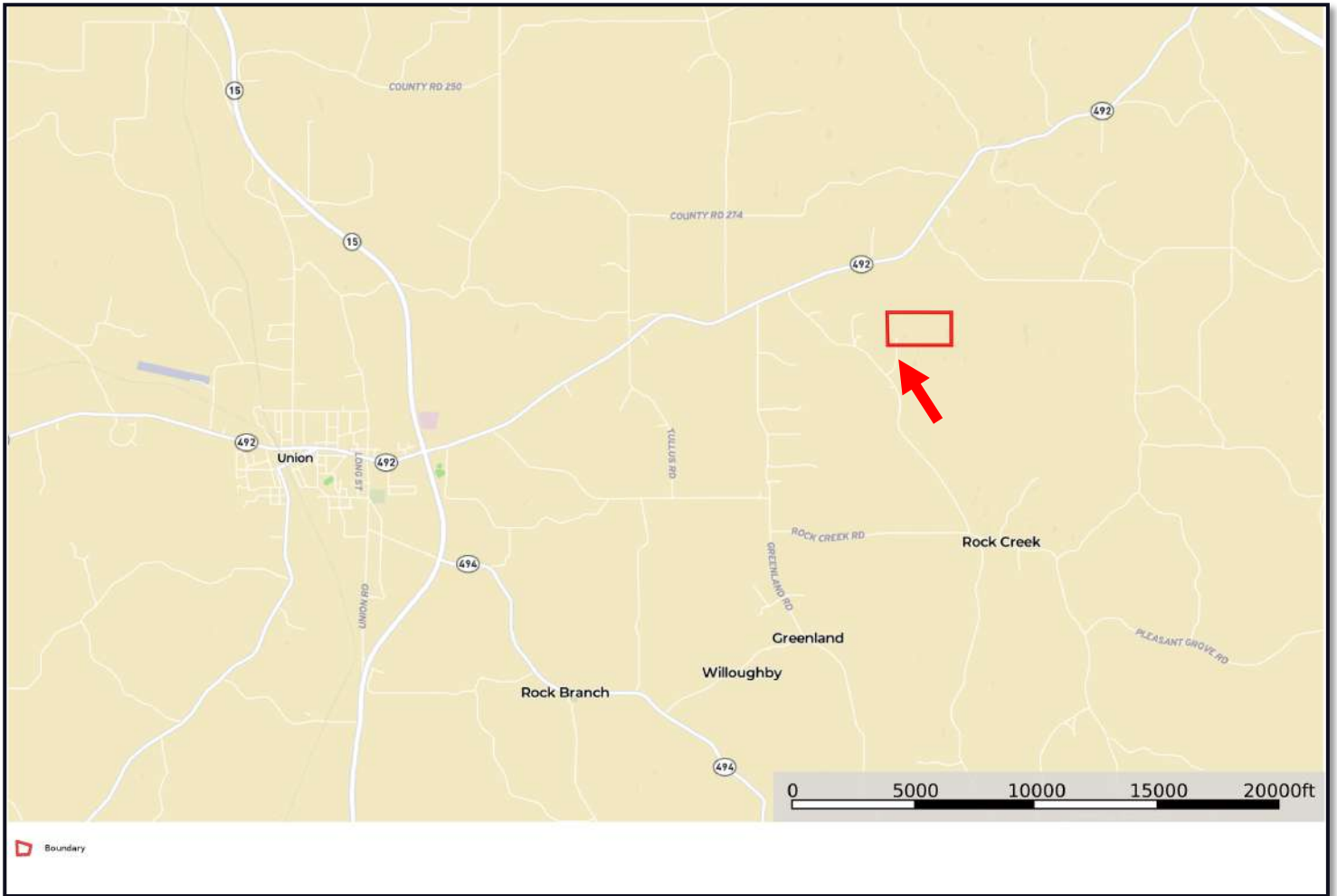
Expect More. Get More.



TomSmithLandandHomes.com

Information is believed to be accurate but not guaranteed.

DIRECTIONAL MAP



DIRECTIONS FROM UNION CITY, MS: Starting at the four way stop of Hwy 15 and Hwy 492 start travel east on Hwy 429 for 3 miles. Turn right on to County Road 509 and travel 1.1 miles then turn left on to Jimmy Keene Rd. The property is approximately 0.03 miles at the end of the Jimmy Keene Rd. [Google Map Link](#)



Call me today!

TRAVIS SMITH, REALTOR®
Travis@TomSmithLand.com
601.898.2772 office | 601.600.0428 cell



TomSmithLandandHomes.com

Information is believed to be accurate but not guaranteed.