

COMMERCIAL PROPERTY ON .8± ACRE LOT IN GEORGE COUNTY, MS



\$85,000

5117 Highway 63 S, Lucedale, MS

Check out this commercial property in Lucedale, MS, in George County! There are numerous business possibilities with this commercial building on Highway 63 S, with excellent traffic. The smaller building would make for a great office space or retail location while, the larger high ceiling structure could work as a workshop or auto body shop. The building sits on a .8± acre lot, providing plenty of room for a parking lot. This property is located on a state highway between Lucedale, MS, and Moss Point, MS. All utilities are available nearby and ready for hook up. Call Preston Smith at Cell: 601.209.7150 or Office: 601.990.5070 for a showing!

Directions from the intersection of MS-26 and MS-63 in Lucedale, MS: Travel south on MS-63S, in 6.2 miles, the property will be on the right.

Address: 5117 Highway 63 S, Lucedale, MS 39452 [GOOGLE MAP LINK](#)



Call me today!

PRESTON SMITH, MANAGING BROKER
Preston@TomSmithLand.com
601.990.5070 **office** | 601.209.7150 **cell**



TomSmithLandandHomes.com

Information is believed to be accurate but not guaranteed.



Call me today!

PRESTON SMITH, MANAGING BROKER
Preston@TomSmithLand.com
601.990.5070 office | 601.209.7150 cell



TomSmithLandandHomes.com

Information is believed to be accurate but not guaranteed.

Aerial Map



[INTERACTIVE MAP LINK](#)

Call me today!

PRESTON SMITH, MANAGING BROKER
Preston@TomSmithLand.com
601.990.5070 office | 601.209.7150 cell

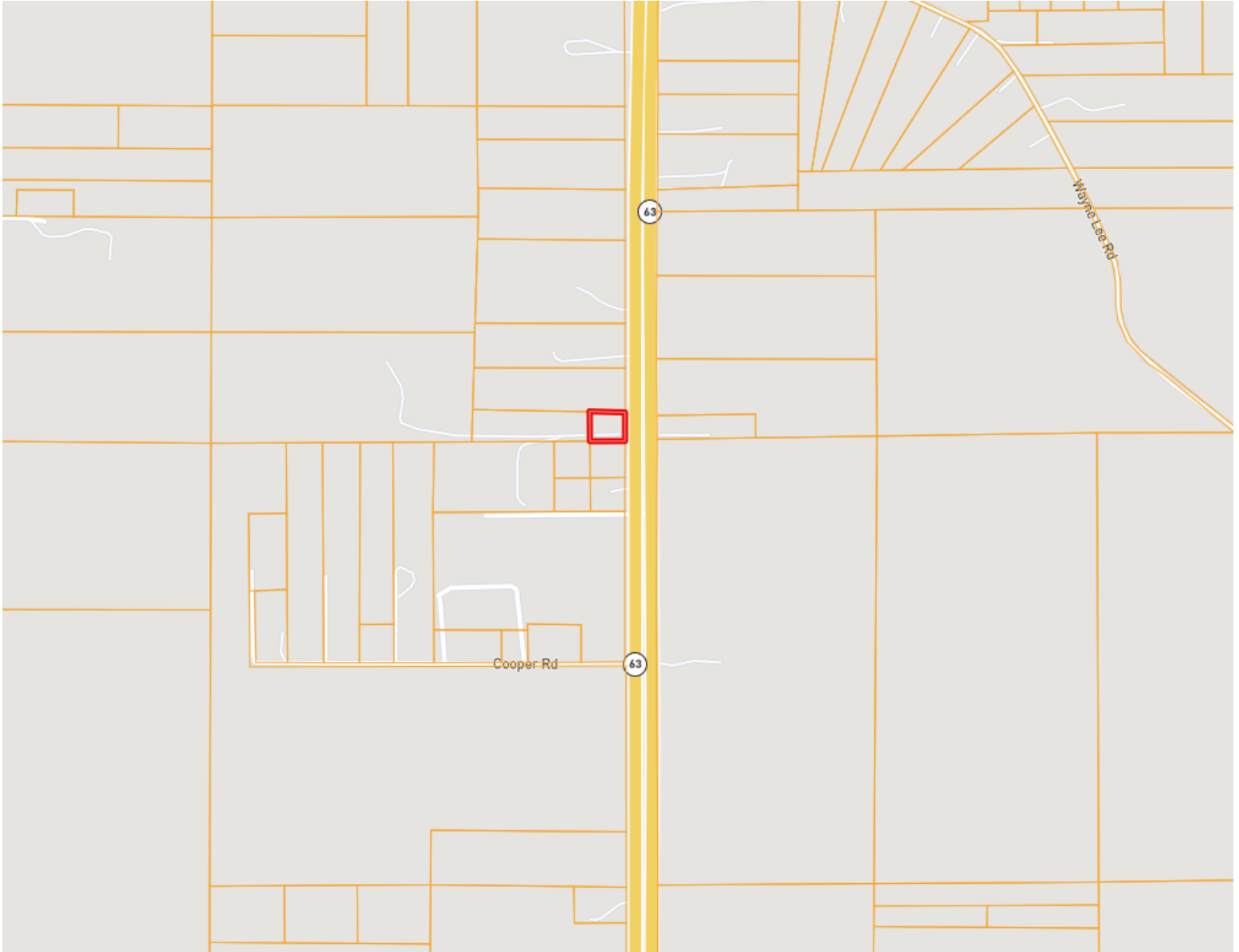


Expect More. Get More.

TomSmithLandandHomes.com

Information is believed to be accurate but not guaranteed.

Ownership Map



Call me today!

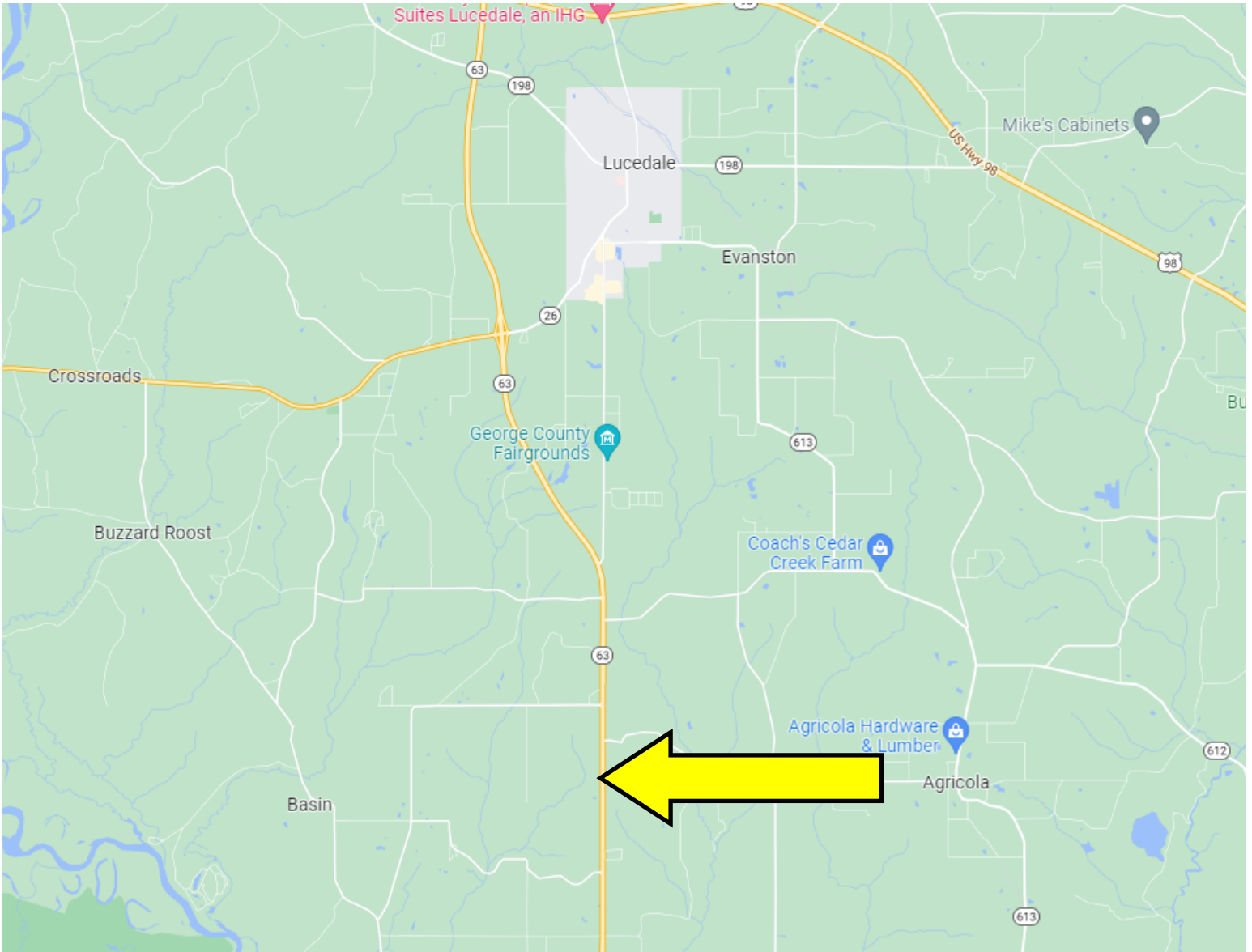
PRESTON SMITH, MANAGING BROKER
Preston@TomSmithLand.com
601.990.5070 **office** | 601.209.7150 **cell**



TomSmithLandandHomes.com

Information is believed to be accurate but not guaranteed.

Directional Map



GOOGLE MAP LINK

Directions from the intersection of MS-26 and MS-63 in Lucedale, MS: Travel south on MS-63S, in 6.2 miles, the property will be on the right.

Address: 5117 Highway 63 S, Lucedale, MS 39452

Call me today!

PRESTON SMITH, MANAGING BROKER
Preston@TomSmithLand.com
601.990.5070 **office** | 601.209.7150 **cell**



TomSmithLandandHomes.com

Information is believed to be accurate but not guaranteed.