

Country Home on 72.59+/- Acres in Lincoln County, MS



1970 West Lincoln Drive SW
McCall Creek, MS 39647

[Property Video](#)

\$459,000

Come and see this amazing 72.59+/- surveyed property in the sought-after West Lincoln School District of Lincoln County, MS. The property features a three bedroom, two bathroom farmhouse with attached two car garage and 800+/- square foot one bedroom, one bathroom mother-in-law suite. The 2700+/- square foot home, built in the early 1900s, sits surrounded by large oaks behind beautiful gates at both ends of the paved circle drive. In addition, a lovely, covered patio completes a large fenced back yard for outdoor entertainment. A large multiple bay pole barn will provide plenty of room for any equipment. The property features approximately 20+/- acres of pasture with two ponds that have been stocked with bass, bream, and catfish over the years. The remaining 52.59+/- acres is a combination of 30+/- year old pine with a hardwood bottom in the center of the property. Call Clif Cannon to schedule a showing today!

Directions from the intersection of US-84 and Interstate 55 (Exit 38) in Brookhaven, MS: Travel west on US-84 for 2.3 miles. Turn left onto West Lincoln Drive and travel for 8.8 miles, the property will be on the right.



Call me today!

CLIF CANNON, REALTOR®
Clif@TomSmithLand.com
601.990.5070 office | 601.565.1070 cell



TomSmithLandandHomes.com

Information is believed to be accurate but not guaranteed.



Call me today!

CLIF CANNON, REALTOR®

Clif@TomSmithLand.com

601.990.5070 **office** | 601.565.1070 **cell**



Expect More. Get More.

TomSmithLandandHomes.com

Information is believed to be accurate but not guaranteed.



Call me today!

CLIF CANNON, REALTOR

Clif@TomSmithLand.com

601.990.5070 office | 601.565.1070 cell



Expect More. Get More.

TomSmithLandandHomes.com

Information is believed to be accurate but not guaranteed.



Call me today!

CLIF CANNON, REALTOR
 Clif@TomSmithLand.com
 601.990.5070 office | 601.565.1070 cell

Tom Smith LAND AND HOMES
 Expect More. Get More.

Lisa Report
2011-2022
 AMERICA'S
BEST
 BROKERAGES

TomSmithLandandHomes.com



Call me today!

CLIF CANNON, REALTOR
Clif@TomSmithLand.com

601.990.5070 **office** | 601.565.1070 **cell**



Expect More. Get More.

TomSmithLandandHomes.com

Information is believed to be accurate but not guaranteed.

Aerial Map



[Interactive Map](#)

Call me today!

CLIF CANNON, REALTOR®
Clif@TomSmithLand.com
601.990.5070 office | 601.565.1070 cell



TomSmithLandandHomes.com

Information is believed to be accurate but not guaranteed.

Topographic Map



Call me today!

CLIF CANNON, REALTOR®

Clif@TomSmithLand.com

601.990.5070 office | 601.565.1070 cell



Expect More. Get More.



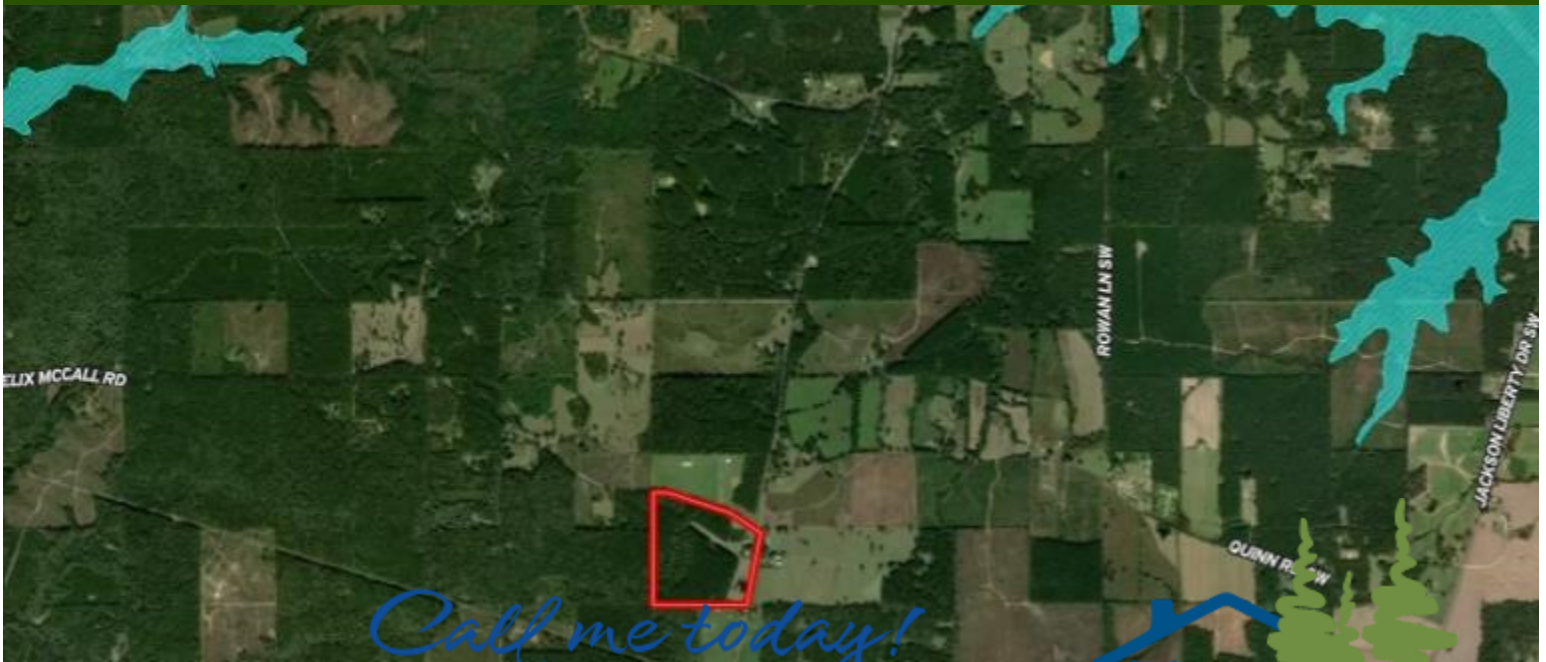
TomSmithLandandHomes.com

Information is believed to be accurate but not guaranteed.

Ownership Map



Flood Map



Call me today!

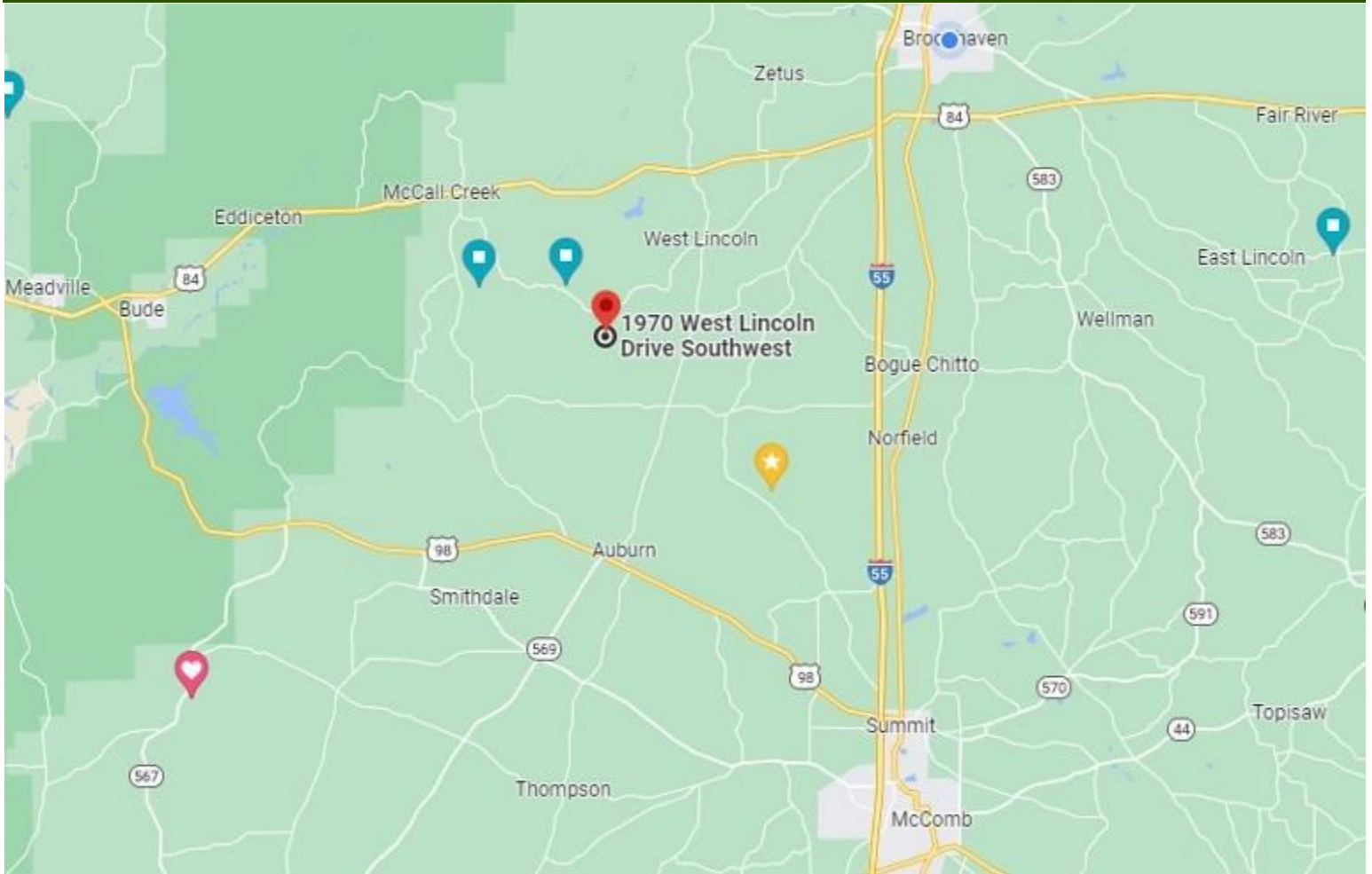
CLIF CANNON, REALTOR®
Clif@TomSmithLand.com
601.990.5070 office | 601.565.1070 cell



TomSmithLandandHomes.com

Information is believed to be accurate but not guaranteed.

Topographic Map



[Google Maps](#)

Directions from the intersection of US-84 and Interstate 55 (Exit 38) in Brookhaven, MS: Travel west on US-84 for 2.3 miles. Turn left onto West Lincoln Drive and travel for 8.8 miles, the property will be on the right.

1970 West Lincoln Drive SW
McCall Creek, MS 39647

Call me today!

CLIF CANNON, REALTOR®
Clif@TomSmithLand.com
601.990.5070 **office** | 601.565.1070 **cell**



TomSmithLandandHomes.com

Information is believed to be accurate but not guaranteed.