

5± ACRES IN ENTERPRISE SCHOOL DISTRICT IN LINCOLN COUNTY, MS



\$80,000

1550 Clark Travis Ln NE, Brookhaven, MS 39601

Look at this 5± acres in Enterprise School District in Lincoln County, MS! Located just 10 minutes from Downtown Brookhaven. The partially fenced area in the south portion of the property would make an excellent homesite with plenty of room to roam and stretch out. There is a large barn with loft on the northeast corner of the property, next to a small pond. This property would be great for investors and those looking for a few acres just outside of town. Additionally there is a small home on the property that could be demolished, and the remaining slab is used for a new home place.

Directions from the intersection of E Monticello St and N 2nd St in Brookhaven, MS: Travel north on N 2nd St, in .5 miles, continue onto Main St, in .5 miles, continue onto Old Hwy 51 NE, in 1.7 miles, take a slight right onto Heucks Retreat Rd NE, in 2.2 miles, turn left onto Clark Travis Ln NE, in .3 miles, the property will be on the right.

Address: 1550 Clark Travis Ln NE, Brookhaven, MS 39601 [GOOGLE MAP LINK](#)



Call me today!

ROBERT SMITH, REALTOR®
Robert@TomSmithLand.com
601.990.5070 **office** | 769.257.8139 **cell**



TomSmithLandandHomes.com

Information is believed to be accurate but not guaranteed.



Call me today!

ROBERT SMITH, REALTOR®
Robert@TomSmithLand.com
601.990.5070 **office** | 769.257.8139 **cell**

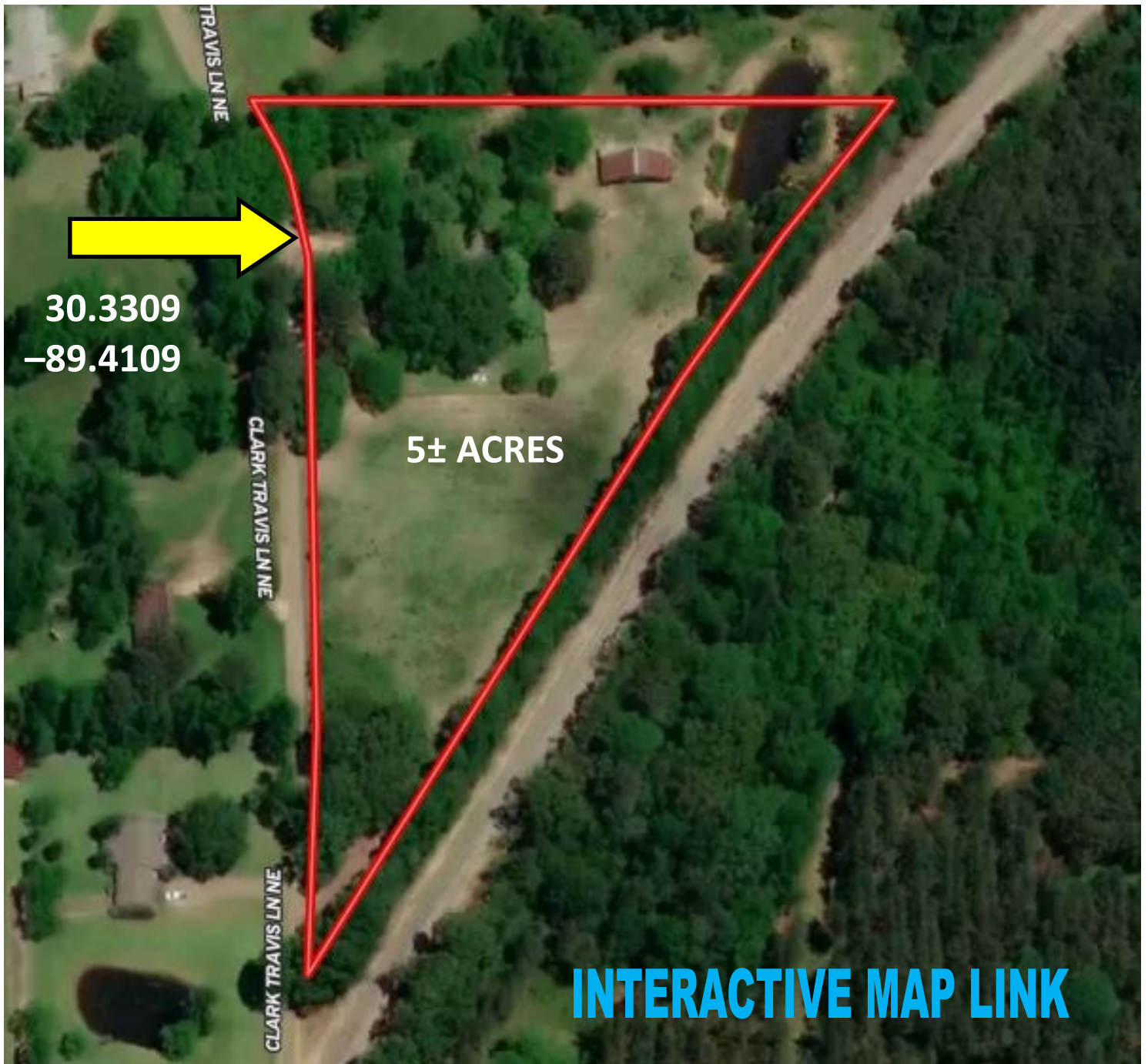


Expect More. Get More.

TomSmithLandandHomes.com

Information is believed to be accurate but not guaranteed.

Aerial Map



*Call me
today!*

ROBERT SMITH, REALTOR®
Robert@TomSmithLand.com
601.990.5070 **office** | 769.257.8139 **cell**

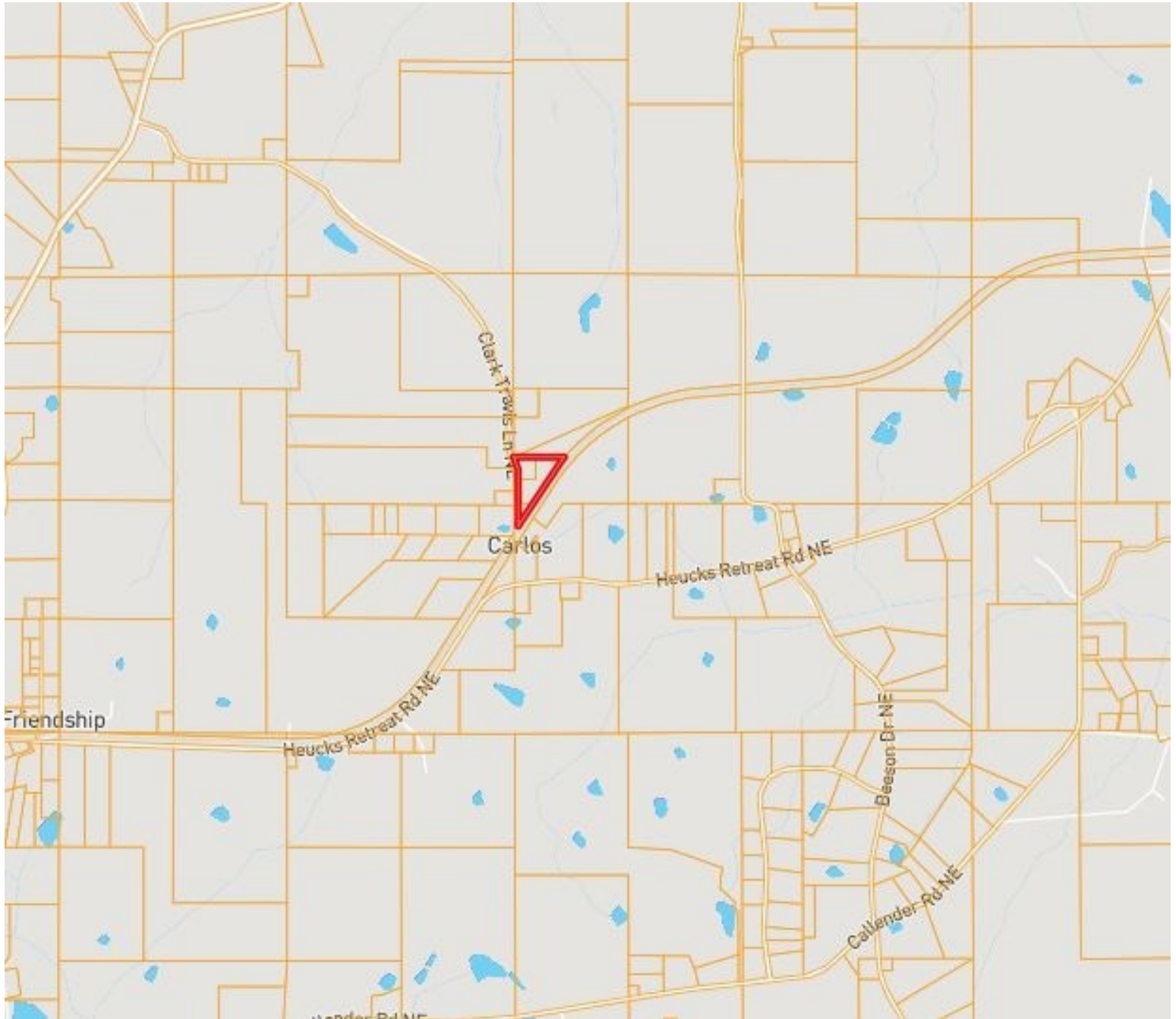


Expect More. Get More.

TomSmithLandandHomes.com

Information is believed to be accurate but not guaranteed.

Ownership Map



*Call me
today!*

ROBERT SMITH, REALTOR®
Robert@TomSmithLand.com
601.990.5070 **office** | 769.257.8139 **cell**



Expect More. Get More.

TomSmithLandandHomes.com

Information is believed to be accurate but not guaranteed.

Topography Map



*Call me
today!*

ROBERT SMITH, REALTOR®
Robert@TomSmithLand.com
601.990.5070 **office** | 769.257.8139 **cell**

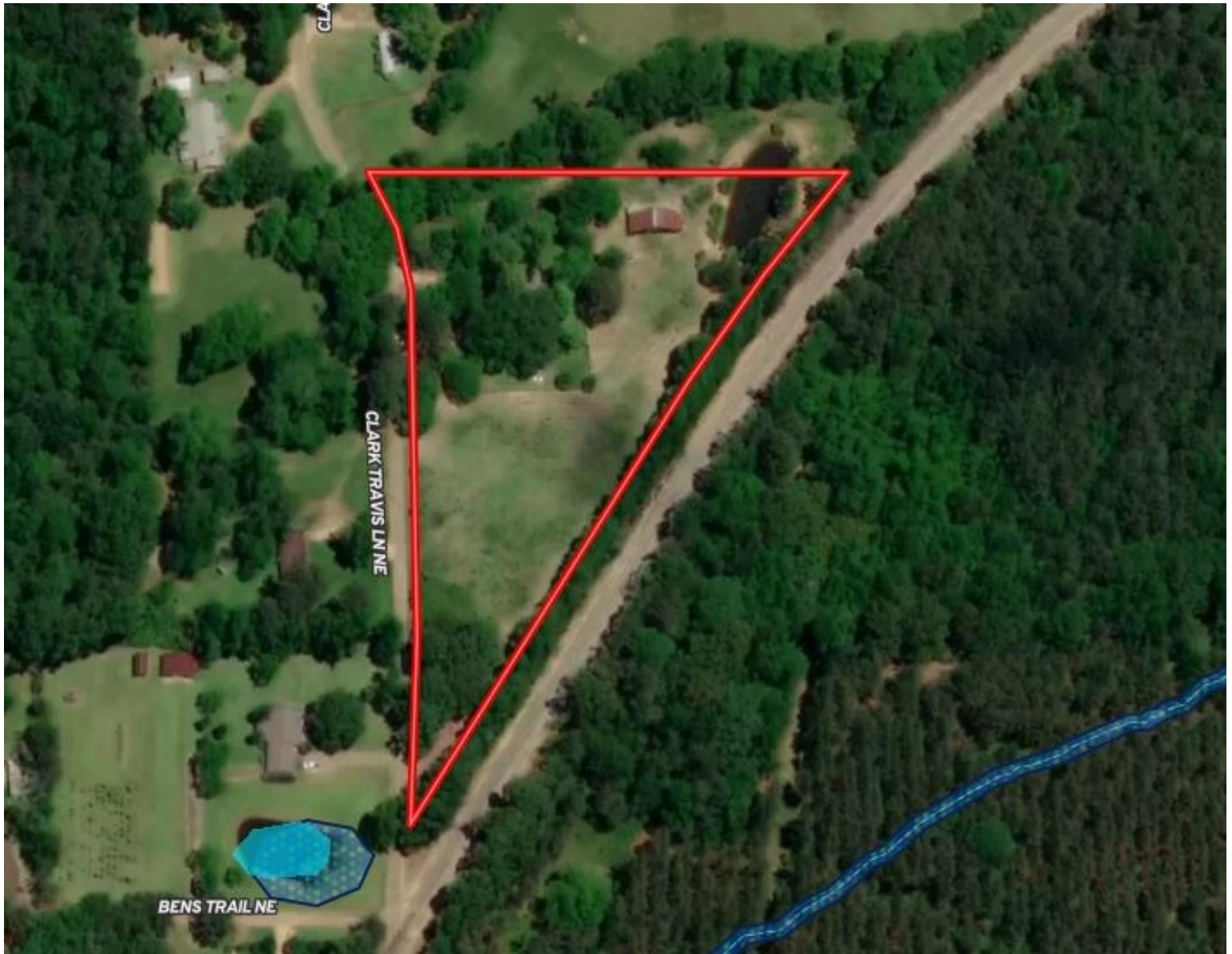


Expect More. Get More.

TomSmithLandandHomes.com

Information is believed to be accurate but not guaranteed.

Flood Map



*Call me
today!*

ROBERT SMITH, REALTOR®
Robert@TomSmithLand.com
601.990.5070 **office** | 769.257.8139 **cell**

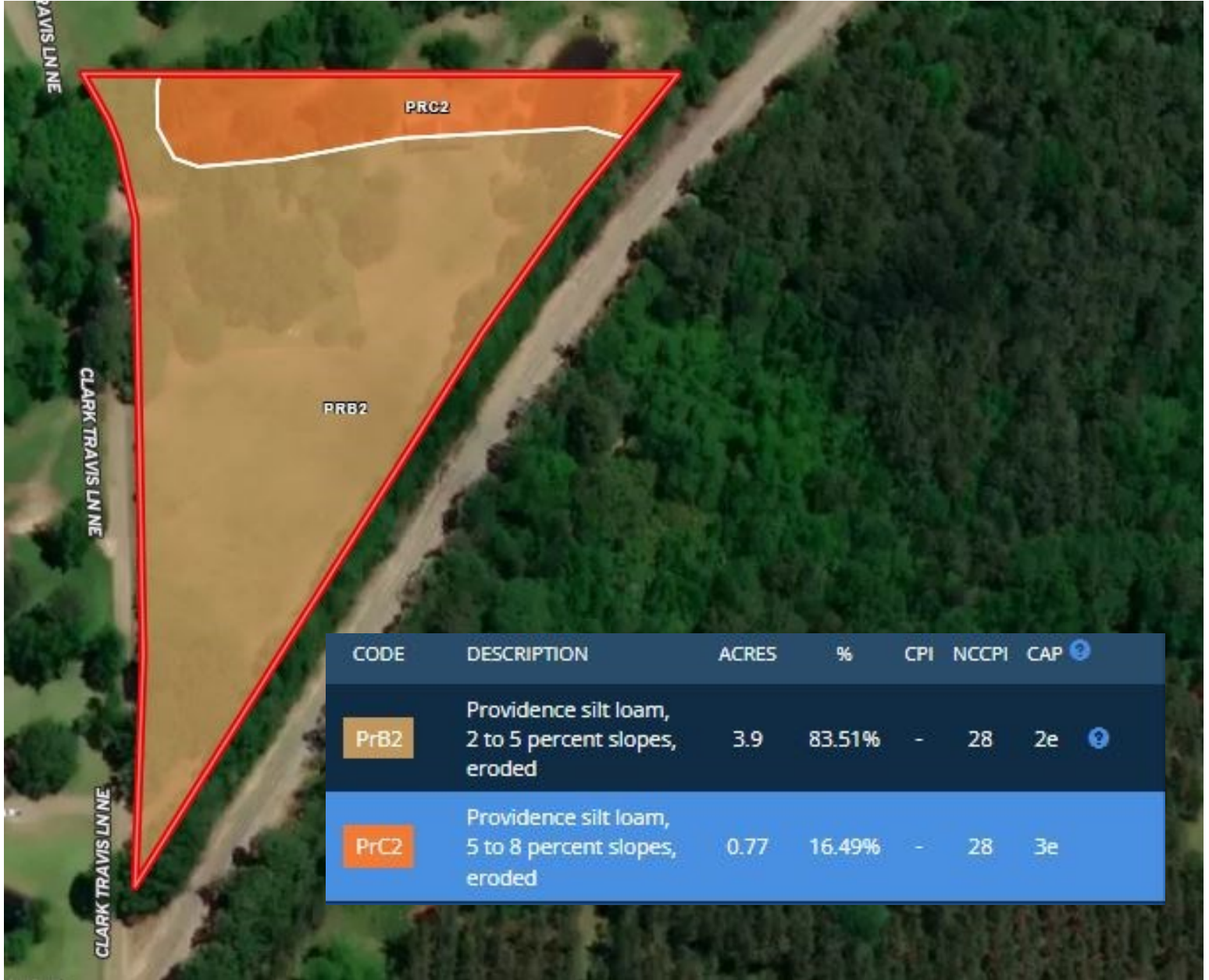


Expect More. Get More.

TomSmithLandandHomes.com

Information is believed to be accurate but not guaranteed.

Soil Map



Call me today!

ROBERT SMITH, REALTOR®
Robert@TomSmithLand.com
601.990.5070 office | 769.257.8139 cell

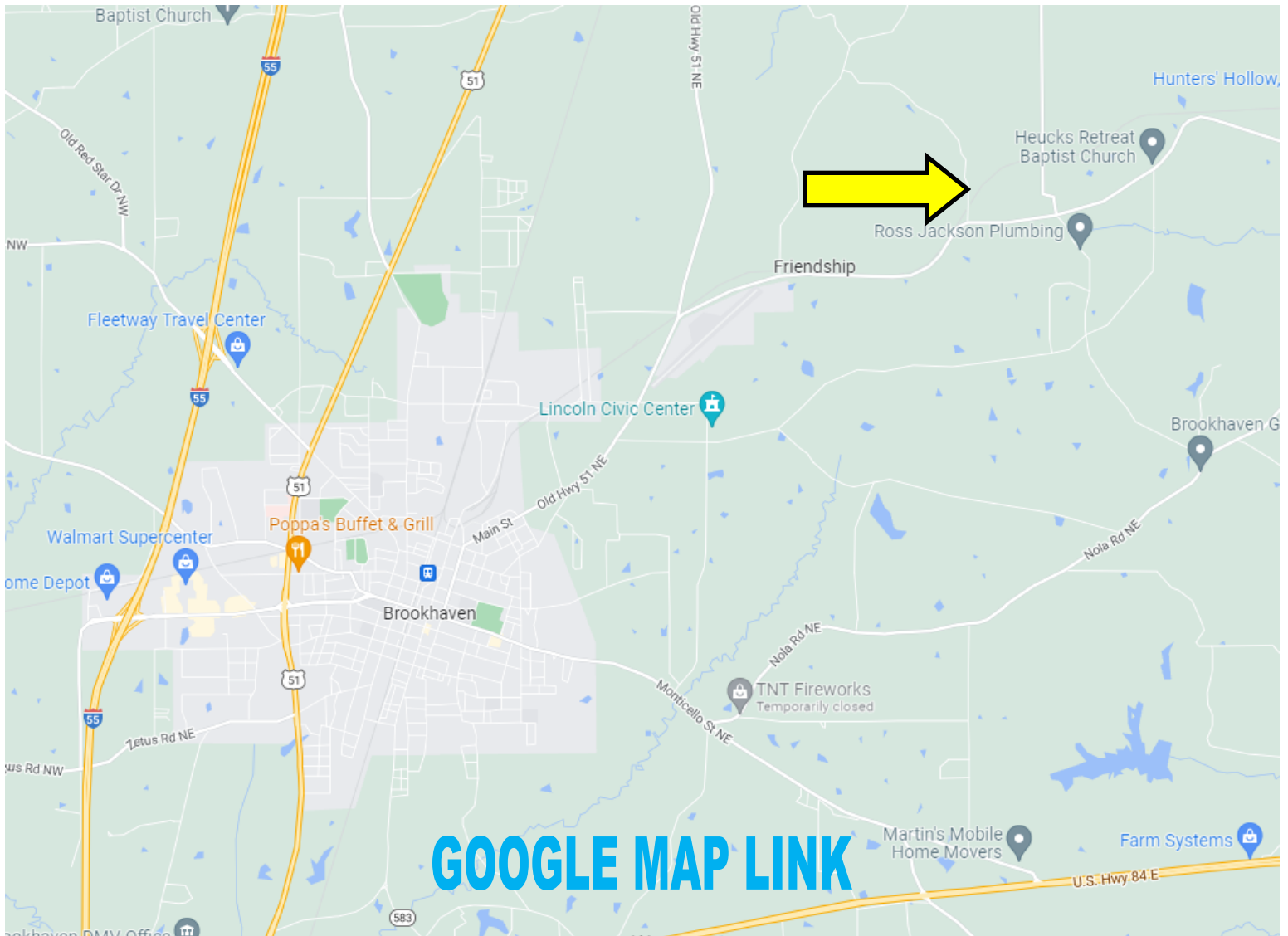


Expect More. Get More.

TomSmithLandandHomes.com

Information is believed to be accurate but not guaranteed.

Directional Map



Directions from the intersection of E Monticello St and N 2nd St in Brookhaven, MS: Travel north on N 2nd St, in .5 miles, continue onto Main St, in .5 miles, continue onto Old Hwy 51 NE, in 1.7 miles, take a slight right onto Heucks Retreat Rd NE, in 2.2 miles, turn left onto Clark Travis Ln NE, in .3 miles, the property will be on the right.

Address: 1550 Clark Travis Ln NE, Brookhaven, MS 39601

Call me today!

ROBERT SMITH, REALTOR®
Robert@TomSmithLand.com
601.990.5070 **office** | 769.257.8139 **cell**



Expect More. Get More.

TomSmithLandandHomes.com

Information is believed to be accurate but not guaranteed.