

80+/- Homesite and Recreational Property Webster County, MS

80+/- Acres

Hwy 82

\$225,000



Welcome to the Webster 80! This 80+/- acre property has been a family hunting destination until recent years and; has been undisturbed for the last few years. This means that you can come in and develop everything just like you like it (reclaim the plots, make new plots, & enhance the interior road system). The property has extensive road frontage on Hwy 82 where you will find an established drive and old homesite. The old family homesite has established utilities and is ready for whatever suits the new owner best a hunting camp or home. The utility providers include Sapa Water Association and Natchez Trace Power Company. Much of the property consists of naturally regenerated timber and approximately five acres of planted pines located in the Northwest portion of the property. You will also notice a "slough" in the middle of the property that could be used potentially for duck hunting or could be converted into a lake or pond in the future. Another added feature of this property is that it is located one mile north of the Big Black River making the potential for wildlife opportunities abundant. To schedule your private showing, call Harper Day!

Directions from intersection of Hwy 82 and Hwy 15 in Mathiston, MS: Travel West on Hwy 82 for 4.0 miles. The property will be on your right. [GOOGLE MAP LINK](#)



Call me
today!

HARPER DAY, REALTOR®

Harper@TomSmithLand.com

662.268.6333 office | 662.694.9751 cell



Expect More. Get More.



TomSmithLandandHomes.com

Information is believed to be accurate but not guaranteed.



LandReport
2011-2022
AMERICA'S
BEST
BROKERAGES



*Call me
today!*

HARPER DAY, REALTOR®
Harper@TomSmithLand.com
662.268.6333 office | 662.694.9751 cell



TomSmithLandandHomes.com

Information is believed to be accurate but not guaranteed.



Call me today!

HARPER DAY, REALTOR®
Harper@TomSmithLand.com
662.268.6333 office | 662.694.9751 cell



Expect More. Get More.



TomSmithLandandHomes.com

Information is believed to be accurate but not guaranteed.



Call me today!

HARPER DAY, REALTOR®
Harper@TomSmithLand.com
662.268.6333 office | 662.694.9751 cell



TomSmithLandandHomes.com

Information is believed to be accurate but not guaranteed.

33.5475 , -89.1901



80 +/-
Acres

Interactive Aerial Map



*Call me
today!*

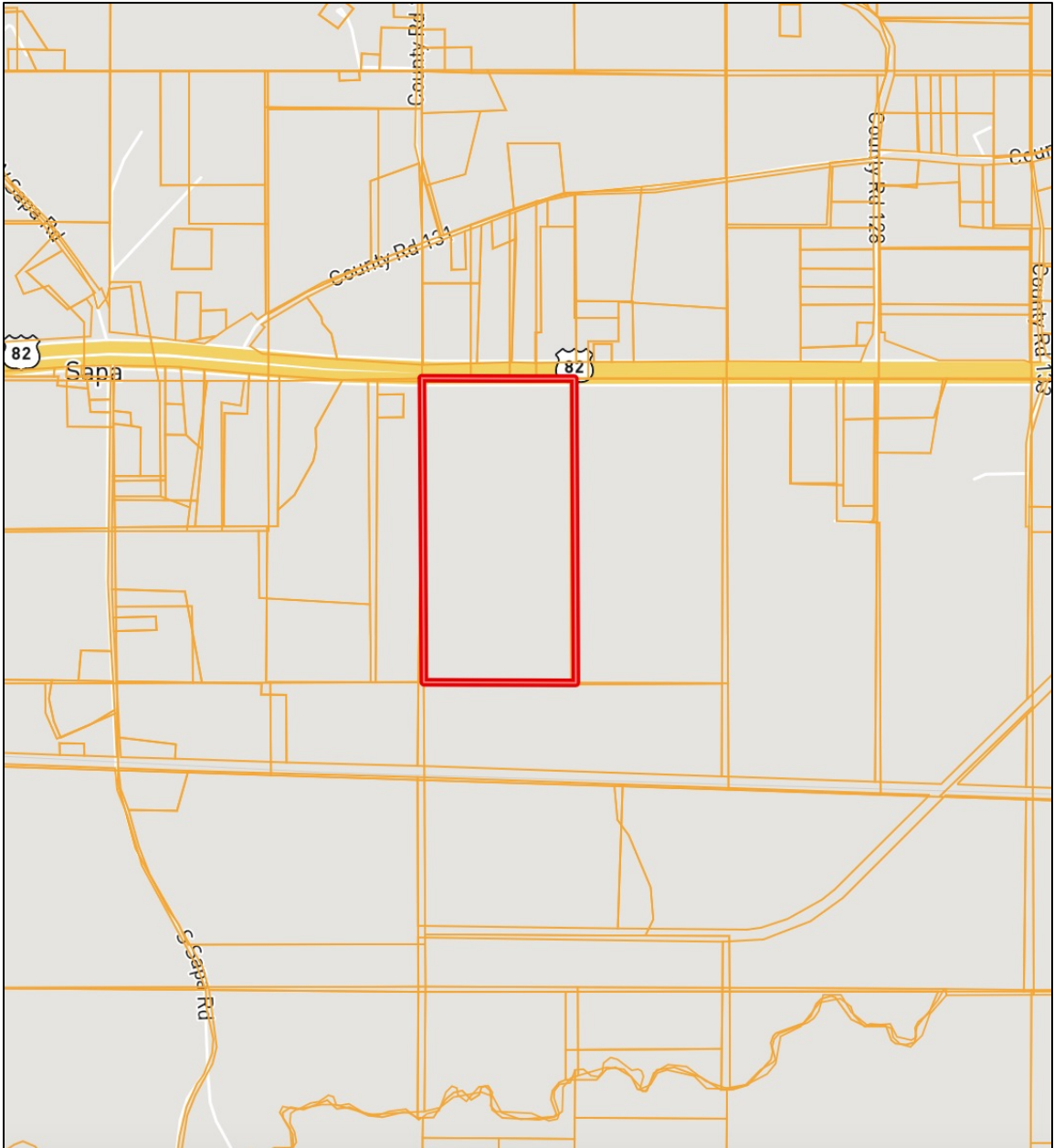
HARPER DAY, REALTOR®
Harper@TomSmithLand.com
662.268.6333 office | 662.694.9751 cell



TomSmithLandandHomes.com

Information is believed to be accurate but not guaranteed.

Ownership Map



Call me today!

HARPER DAY, REALTOR®

Harper@TomSmithLand.com

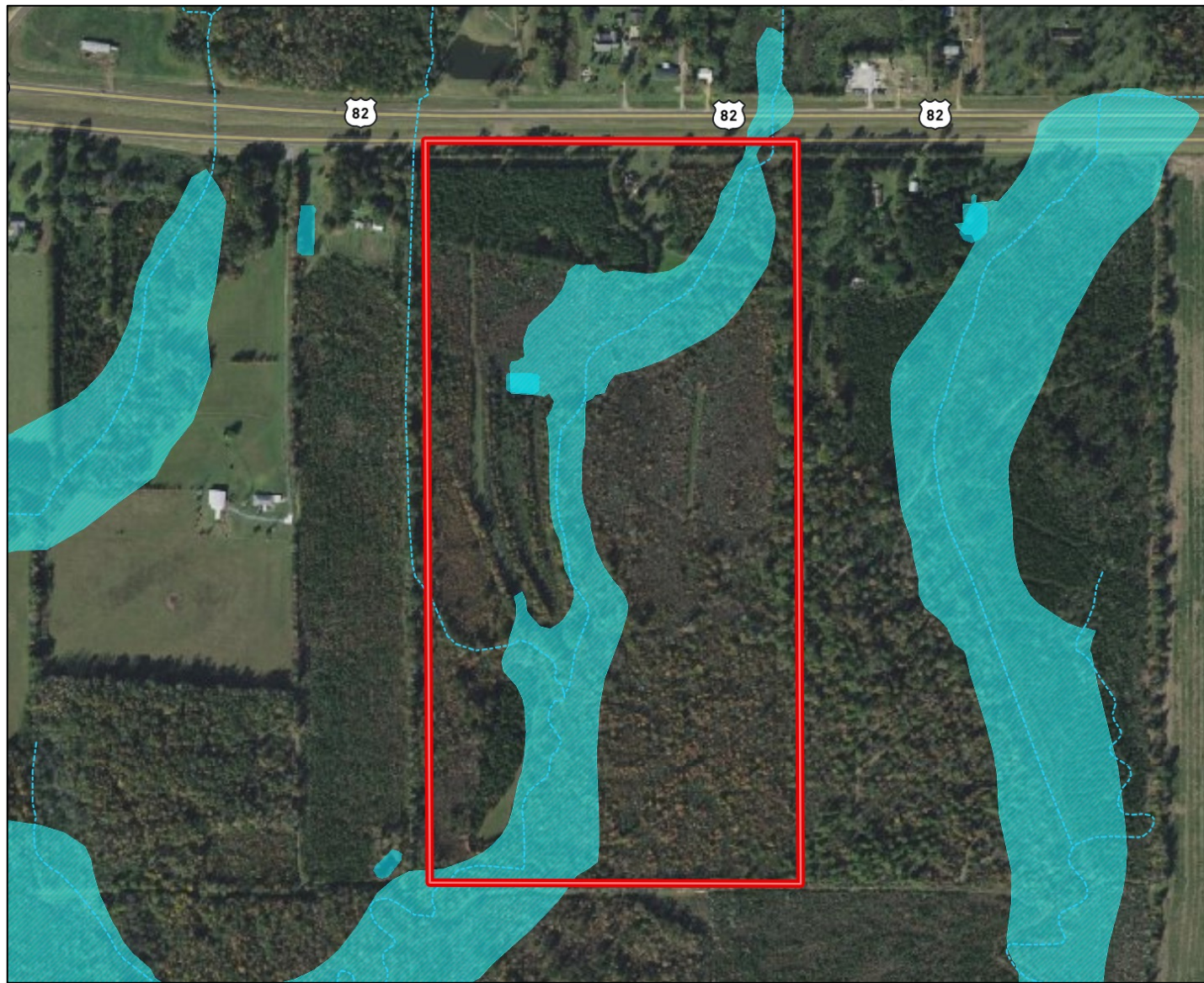
662.268.6333 office | 662.694.9751 cell



TomSmithLandandHomes.com

Information is believed to be accurate but not guaranteed.

Water Feature & FEMA Flood Map



Call me today!

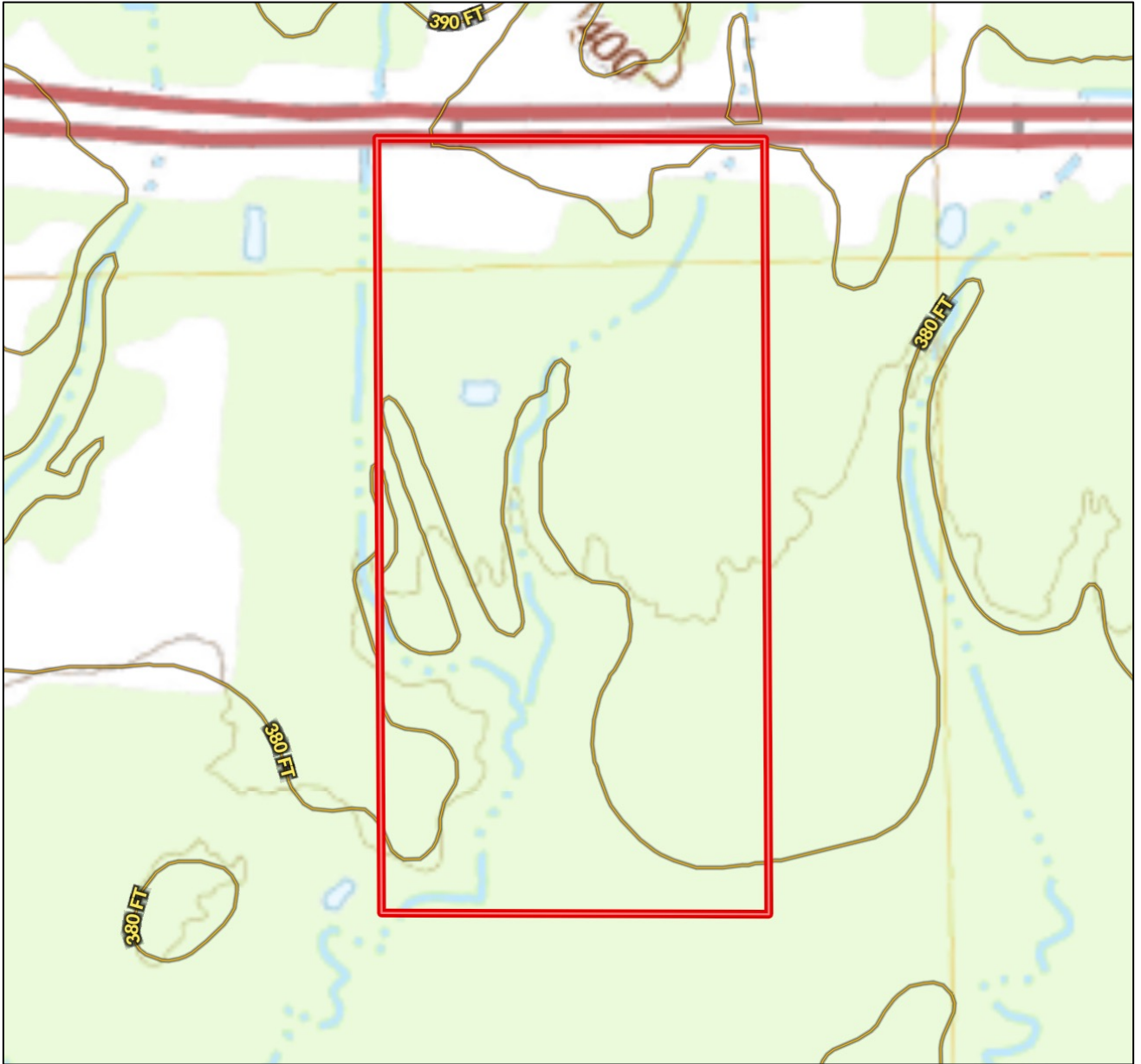
HARPER DAY, REALTOR®
Harper@TomSmithLand.com
662.268.6333 office | 662.694.9751 cell



TomSmithLandandHomes.com

Information is believed to be accurate but not guaranteed.

Topographical Map



Call me today!

HARPER DAY, REALTOR®

Harper@TomSmithLand.com

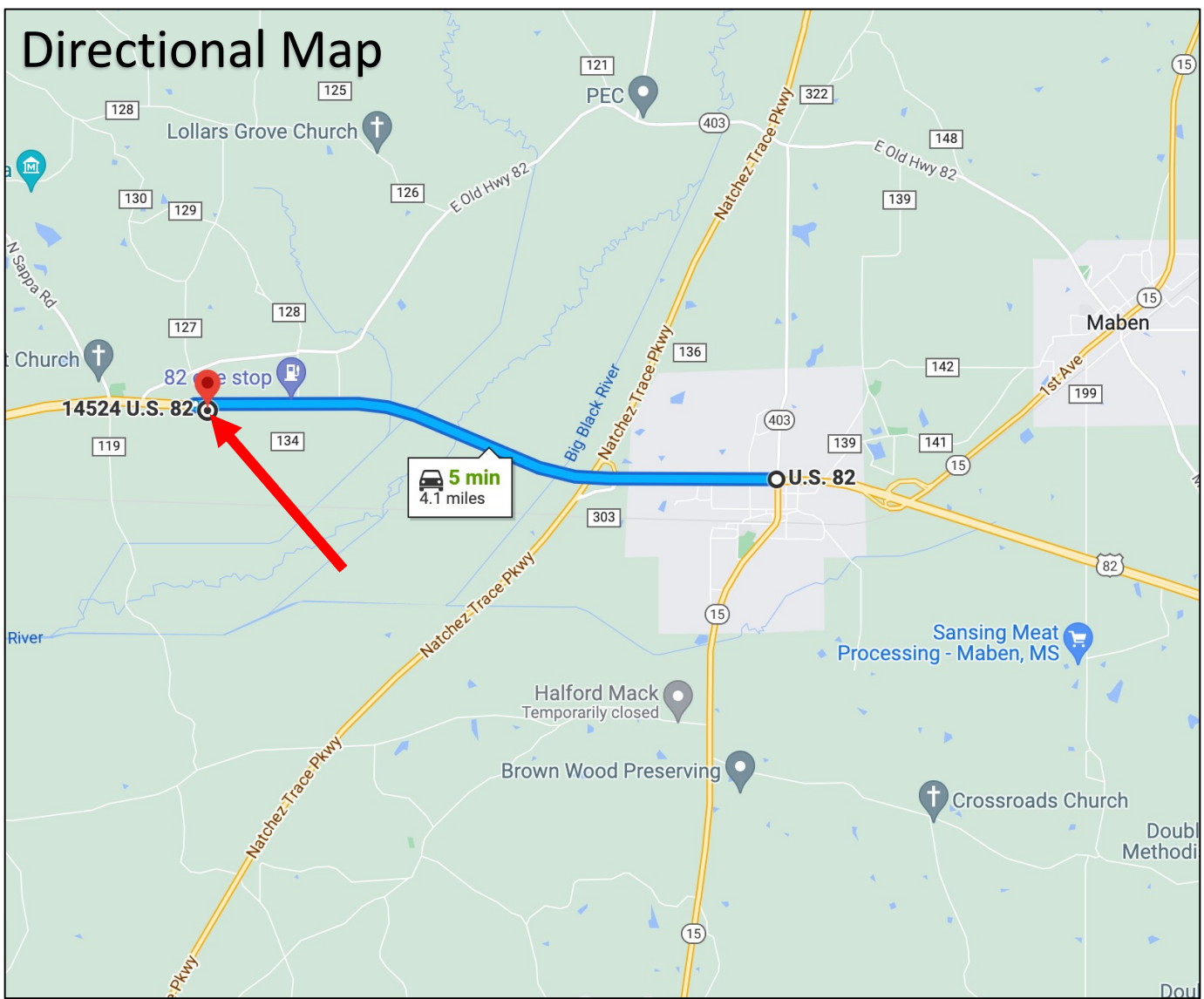
662.268.6333 office | 662.694.9751 cell



TomSmithLandandHomes.com

Information is believed to be accurate but not guaranteed.

Directional Map



Directions from intersection of Hwy 82 and Hwy 15 in Mathiston, MS: Travel West on Hwy 82 for 4.0 miles. The property will be on your right.

[Google Map](#)

Call me today!

HARPER DAY, REALTOR®

Harper@TomSmithLand.com

662.268.6333 office | 662.694.9751 cell



Expect More. Get More.



TomSmithLandandHomes.com

Information is believed to be accurate but not guaranteed.