

BLANK CANVAS

80± Acres in Jasper County, MS



Have you been looking for a blank canvas to make your own? Take a look at this 80+/- acre Jasper County, MS, cutover tract. This property consists of three-year-old cutover with a natural regrowth. Town Creek runs throughout the center of the property providing water for numerous opportunities. With over 2,000 frontage feet on County Road 16 and utilities available at the road, this property would be the perfect home place or hunting paradise. Buzz Belden for your private showing today!

Directions from Hwy 503 and CR 16 in Paulding, MS: Travel Highway 16 for 2.3 miles. The property will be on your left. [GOOGLE MAP LINK](#)



Call me today!

DAVID BELDEN, REALTOR®
DBelden@TomSmithLand.com
601.898.2772 **office** | 601.415.3884 **cell**



TomSmithLandandHomes.com

Information is believed to be accurate but not guaranteed.



Call me today!

DAVID BELDEN, REALTOR®
 DBelden@TomSmithLand.com
 601.898.2772 **office** | 601.415.3884 **cell**



TomSmithLandandHomes.com

Information is believed to be accurate but not guaranteed.



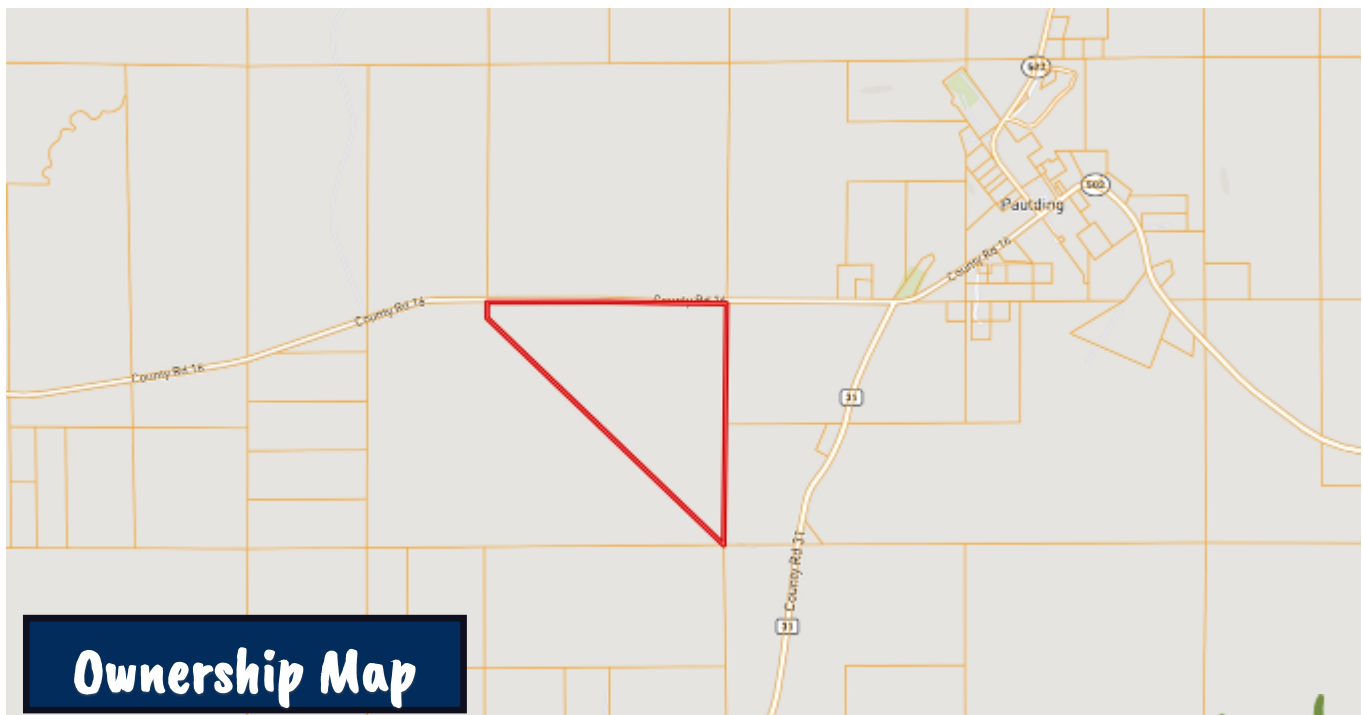
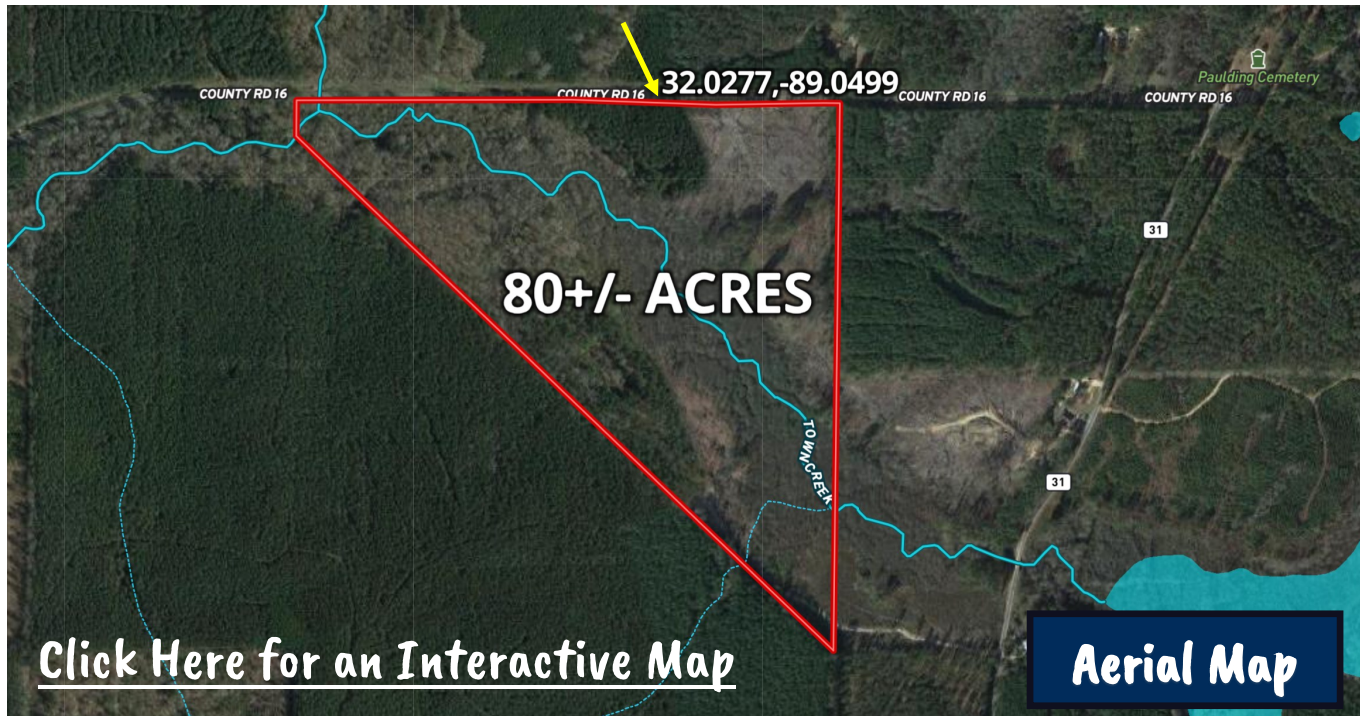
Call me today!

DAVID BELDEN, REALTOR®
 DBelden@TomSmithLand.com
 601.898.2772 **office** | 601.415.3884 **cell**



TomSmithLandandHomes.com

Information is believed to be accurate but not guaranteed.



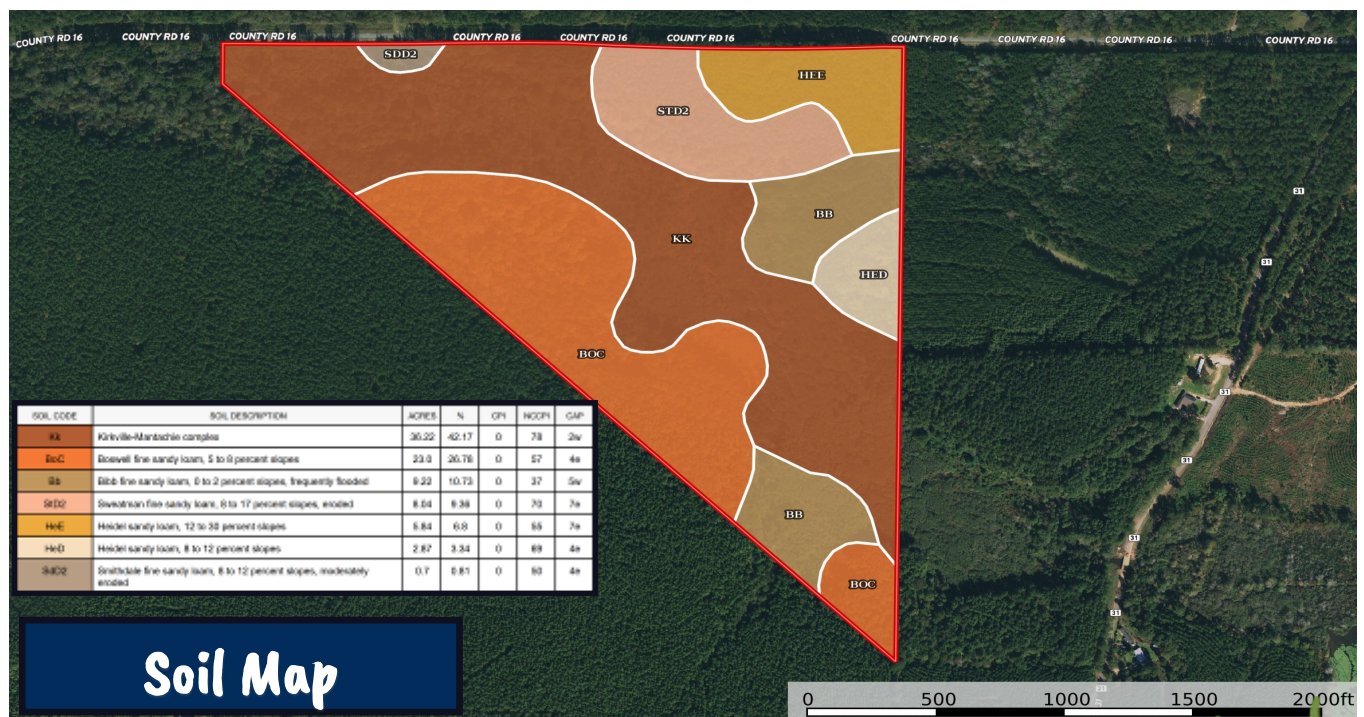
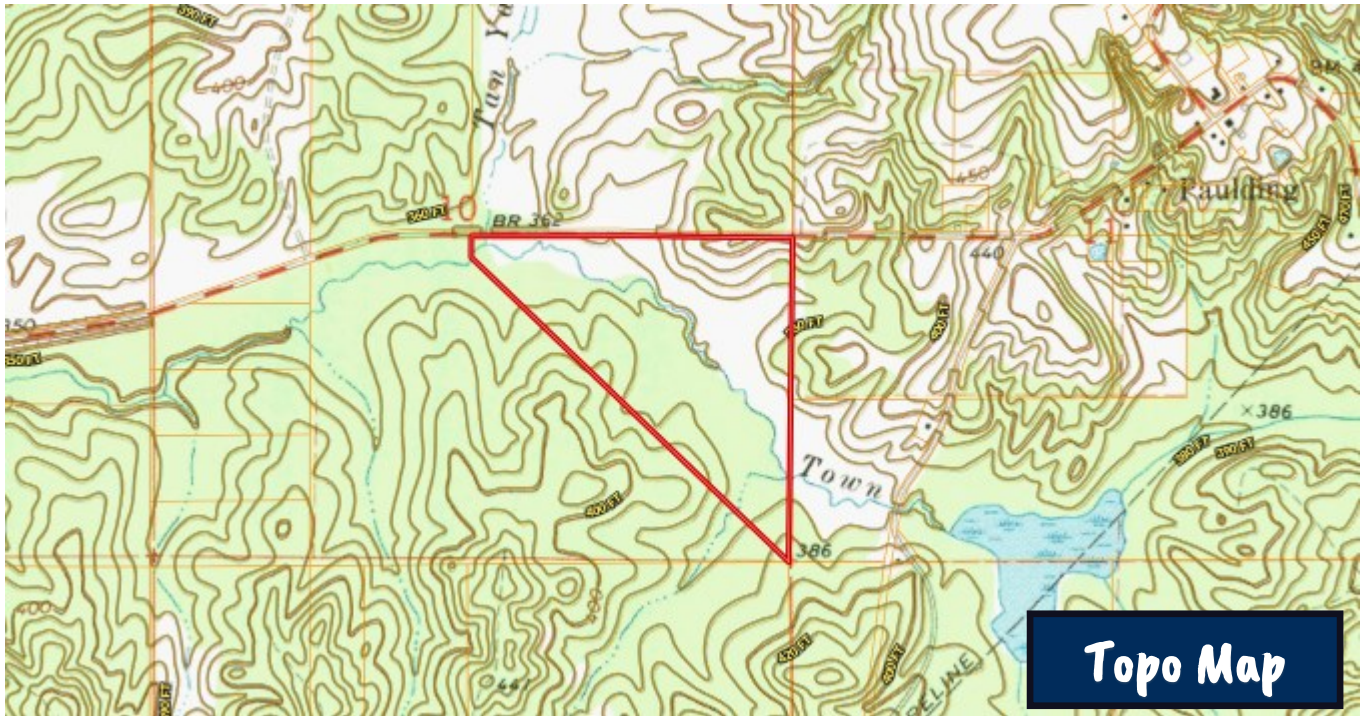
Call me today!

DAVID BELDEN, REALTOR®
DBelden@TomSmithLand.com
601.898.2772 **office** | 601.415.3884 **cell**



TomSmithLandandHomes.com

Information is believed to be accurate but not guaranteed.



Call me today!

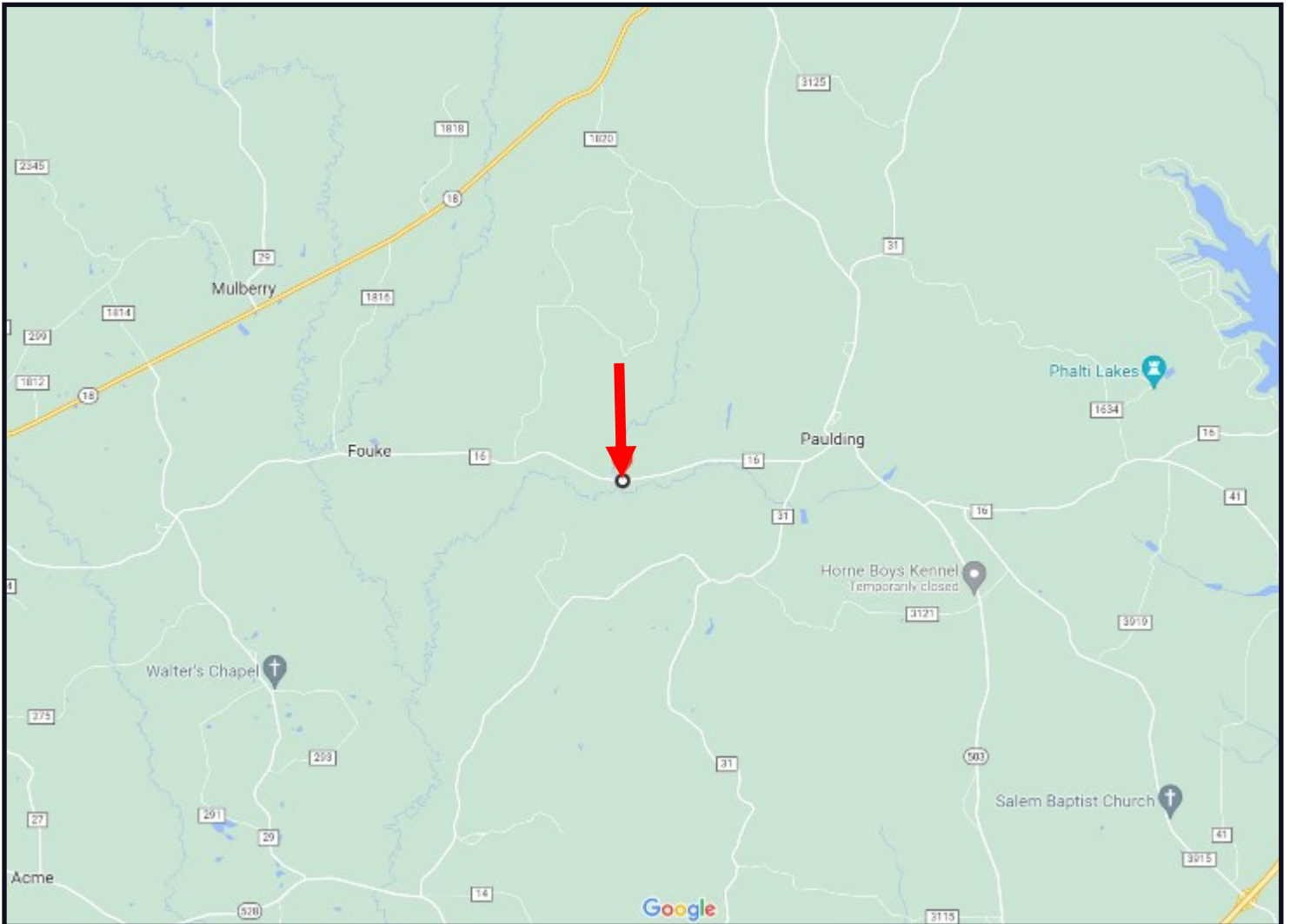
DAVID BELDEN, REALTOR®
 DBelden@TomSmithLand.com
 601.898.2772 **office** | 601.415.3884 **cell**



TomSmithLandandHomes.com

Information is believed to be accurate but not guaranteed.

Directional Map



Directions from Hwy 503 and CR 16 in Paulding, MS: Travel Highway 16 for 2.3 miles. The property will be on your left. [GOOGLE MAP LINK](#)



Call me today!

DAVID BELDEN, REALTOR®
DBelden@TomSmithLand.com
601.898.2772 **office** | 601.415.3884 **cell**



TomSmithLandandHomes.com

Information is believed to be accurate but not guaranteed.