

.57+/- ACRE EAGLE LAKE LOT

Eagle Lake Shore Rd. Vicksburg, MS 39183



\$55,000

Are you looking to build on Eagle Lake in Warren County, MS? Welcome to your new lake house lot with some of the most beautiful views on the lake! This 0.57± acre lot enjoys 100± frontage feet along the north side of Eagle Lake Shore Road and 100± frontage feet along the lake. No mobile homes. Water and electricity are available. Come take advantage of the lake life today! Call David Belden for your private showing. Taxes: \$730.62

DIRECTIONS FROM HWY 61 NORTH IN VICKSBURG, MS: Travel north on Hwy 61 N/Washington Street toward Main Street for 6.1 miles. Turn left onto US-61 N and continue for 3.9 miles. Keep left to stay on Hwy 61 N and travel for 1.5 miles. Turn left onto Hwy 465 N and travel for 13.7 miles. Turn left onto Eagle Lake Shore Road. The property is located on the right.

[Google Map Link: Eagle Lake Shore Road, Vicksburg, MS, 39183](#)



Call me today!

DAVID BELDEN, REALTOR®
DBelden@TomSmithLand.com
601.898.2772 office | 601.415.3884 cell



TomSmithLandandHomes.com

Information is believed to be accurate but not guaranteed.



Call me today!

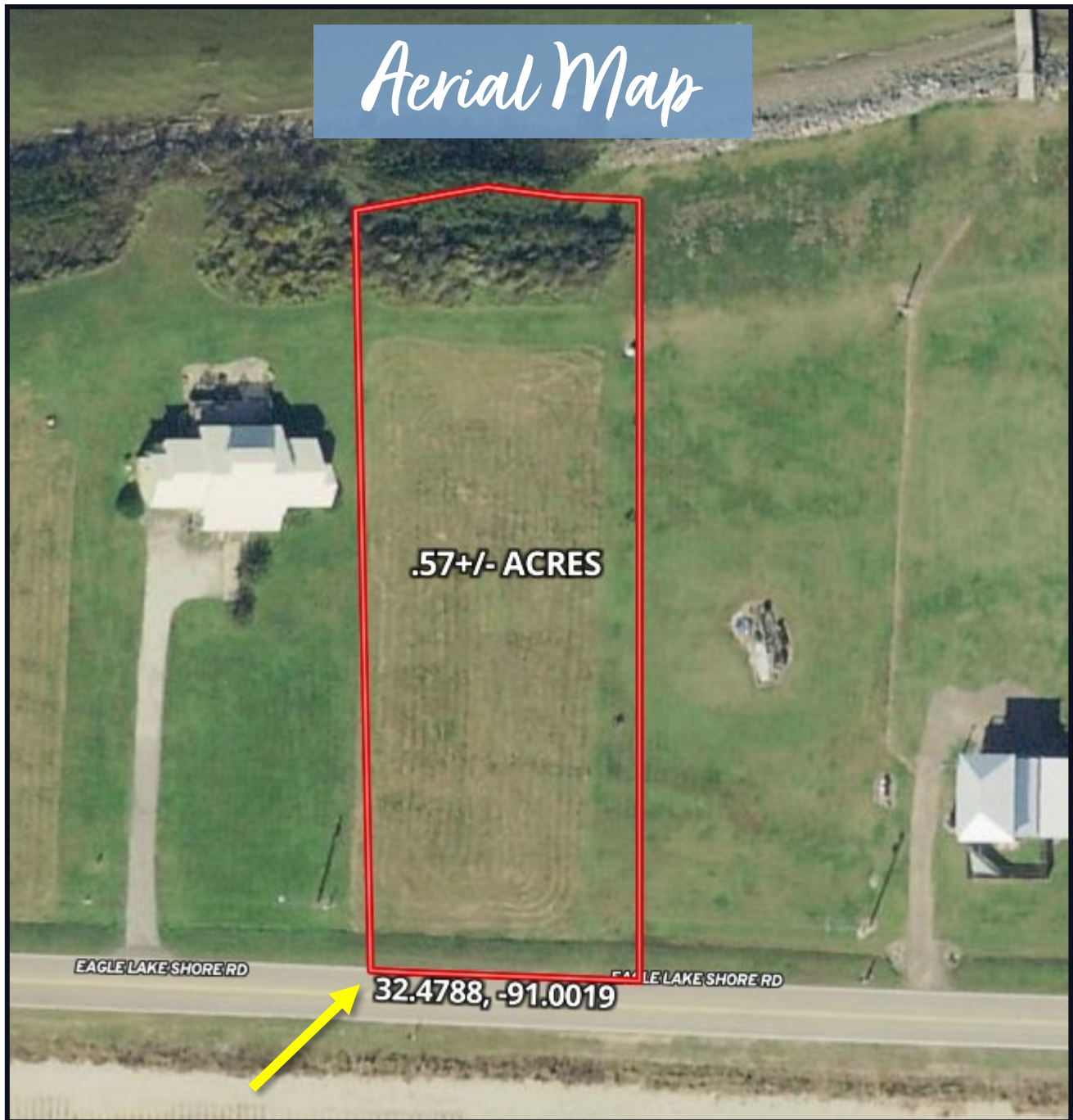
DAVID BELDEN, REALTOR®
DBelden@TomSmithLand.com
601.898.2772 **office** | 601.415.3884 **cell**



TomSmithLandandHomes.com

Information is believed to be accurate but not guaranteed.

Aerial Map



[CLICK HERE FOR AN INTERACTIVE MAP](#)

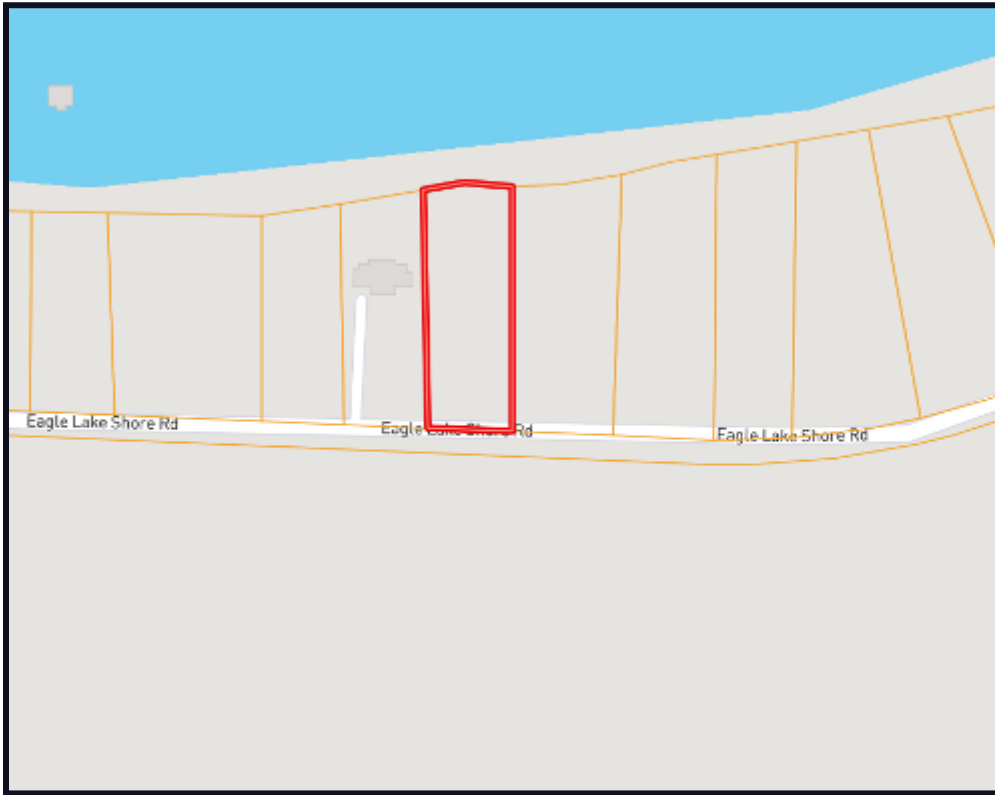
Call me today!

DAVID BELDEN, REALTOR®
DBelden@TomSmithLand.com
601.898.2772 **office** | 601.415.3884 **cell**

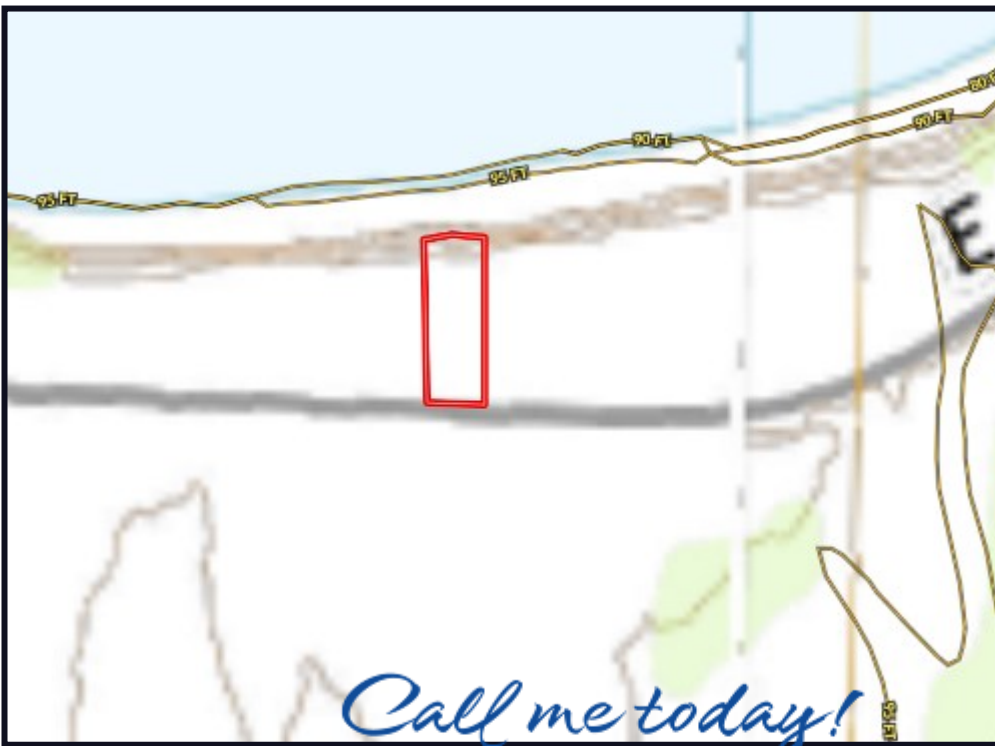


TomSmithLandandHomes.com

Information is believed to be accurate but not guaranteed.



Ownership
Map



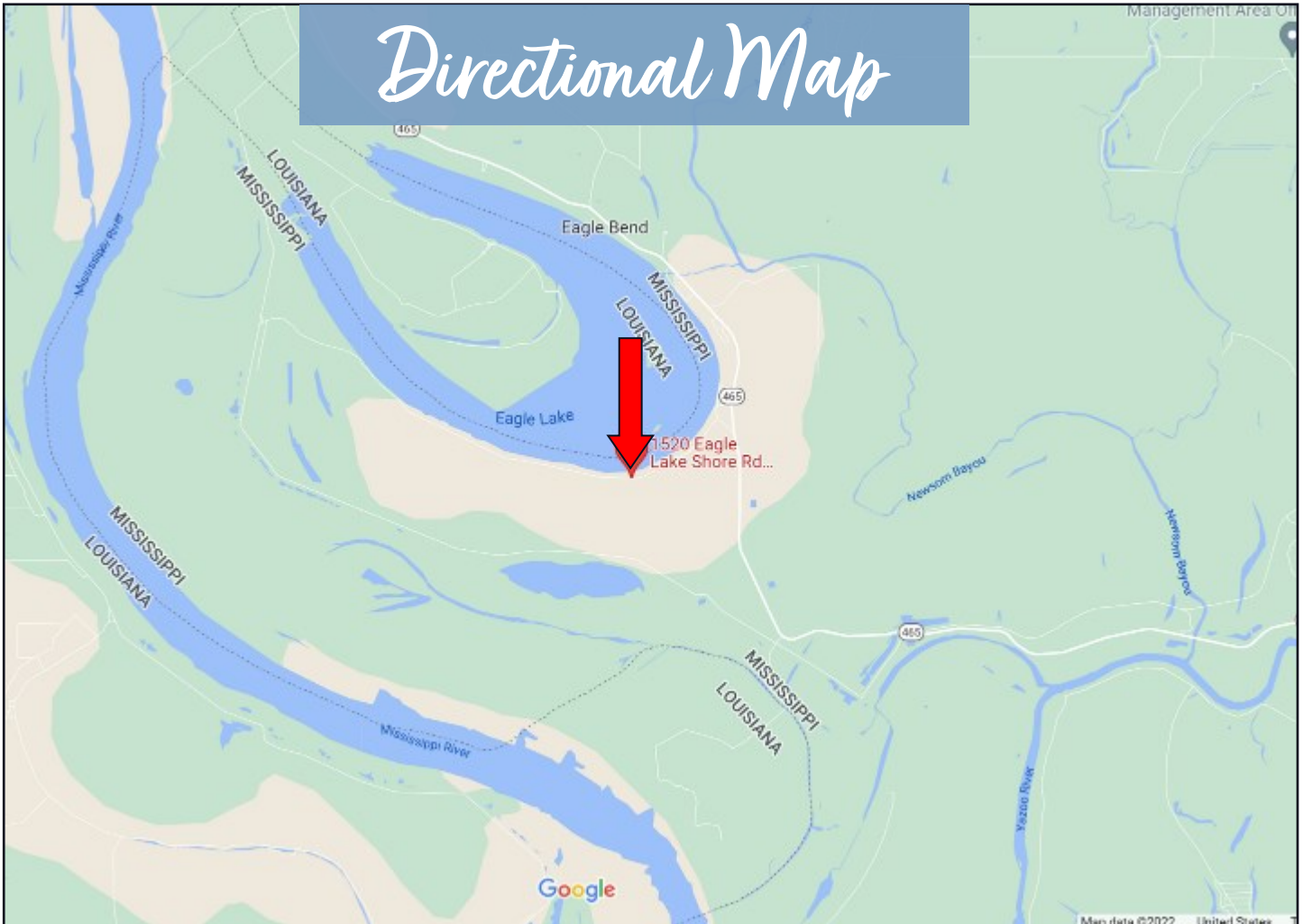
Topo
Map

DAVID BELDEN, REALTOR®
 DBelden@TomSmithLand.com
 601.898.2772 office | 601.415.3884 cell



TomSmithLandandHomes.com

Information is believed to be accurate but not guaranteed.



DIRECTIONS FROM HWY 61 NORTH IN VICKSBURG, MS: Travel north on Hwy 61 N/Washington Street toward Main Street for 6.1 miles. Turn left onto US-61 N and continue for 3.9 miles. Keep left to stay on Hwy 61 N and travel for 1.5 miles. Turn left onto Hwy 465 N and travel for 13.7 miles. Turn left onto Eagle Lake Shore Road. The property is located on the right.

[Google Map Link: Eagle Lake Shore Road, Vicksburg, MS, 39183](#)



Call me today!

DAVID BELDEN, REALTOR®
DBelden@TomSmithLand.com
601.898.2772 office | 601.415.3884 cell



TomSmithLandandHomes.com

Information is believed to be accurate but not guaranteed.